

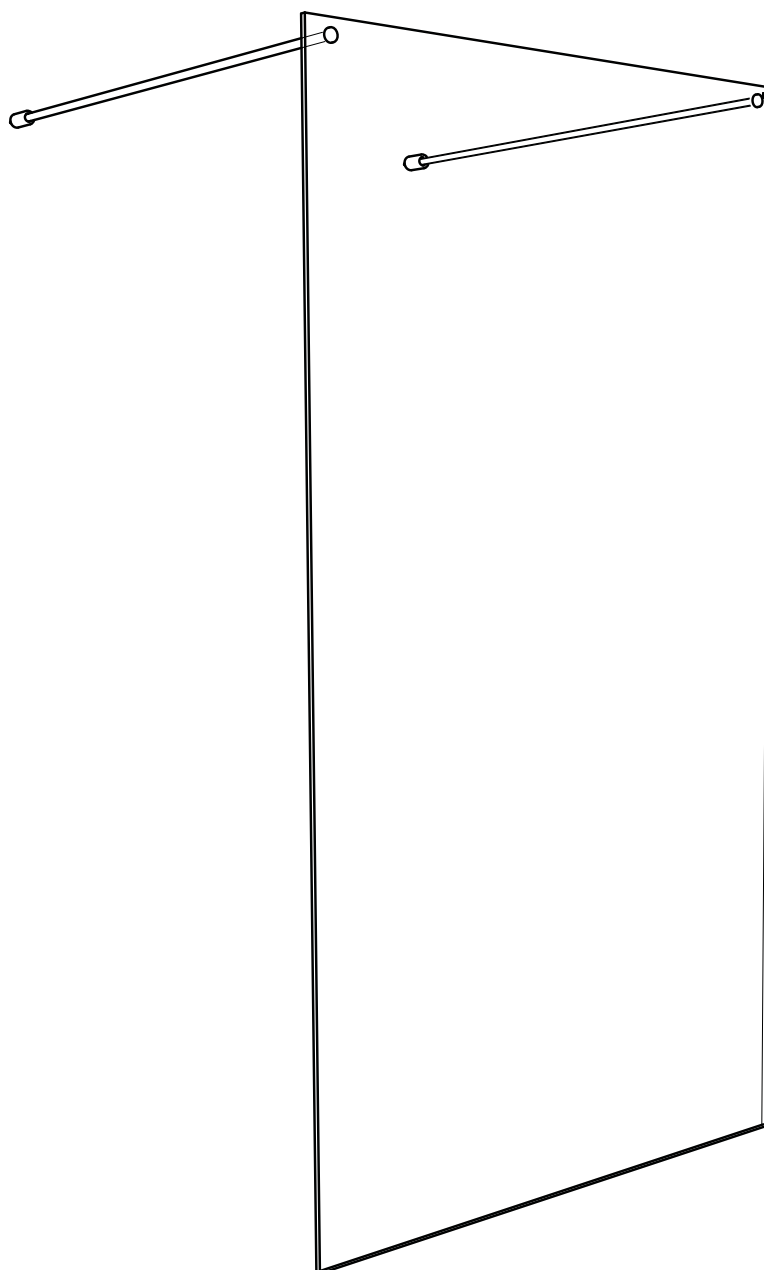
# matki

## STRAIGHT PANEL TWIN ENTRANCE

AST1000

AST1200

AST1500



INSTALLATION

PARTS LIST

PLEASE PASS THE  
GUARANTEE CARD ON  
TO THE CUSTOMER

**MATKI PLC, CHURCHWARD ROAD, YATE, BRISTOL, BS37 5PL**  
TELEPHONE: 01454 322888 (CUSTOMER SERVICES) EMAIL: [techsupport@matki.co.uk](mailto:techsupport@matki.co.uk)



1116 AF 01/22

Matki recommend that this product is fitted by professional installers

## IMPORTANT

### TOOLS REQUIRED

Masonry Drill bit 6mm, Tape Measure, Screw Drivers, Allen Keys, Safety Glasses, Electric Drill, Level, Pencil, Adjustable Spanners x 2

Before disposing of carton and/or commencing assembly, please check all the parts to ascertain that none are missing and they are all undamaged. No claim for missing/damaged parts will be accepted once the packing carton has been disposed of and/or assembly has commenced.

In case of query contact your Stockist with details of model number and details of serial number.

Due to the weight of the panel we recommend that two people are available for assembly.

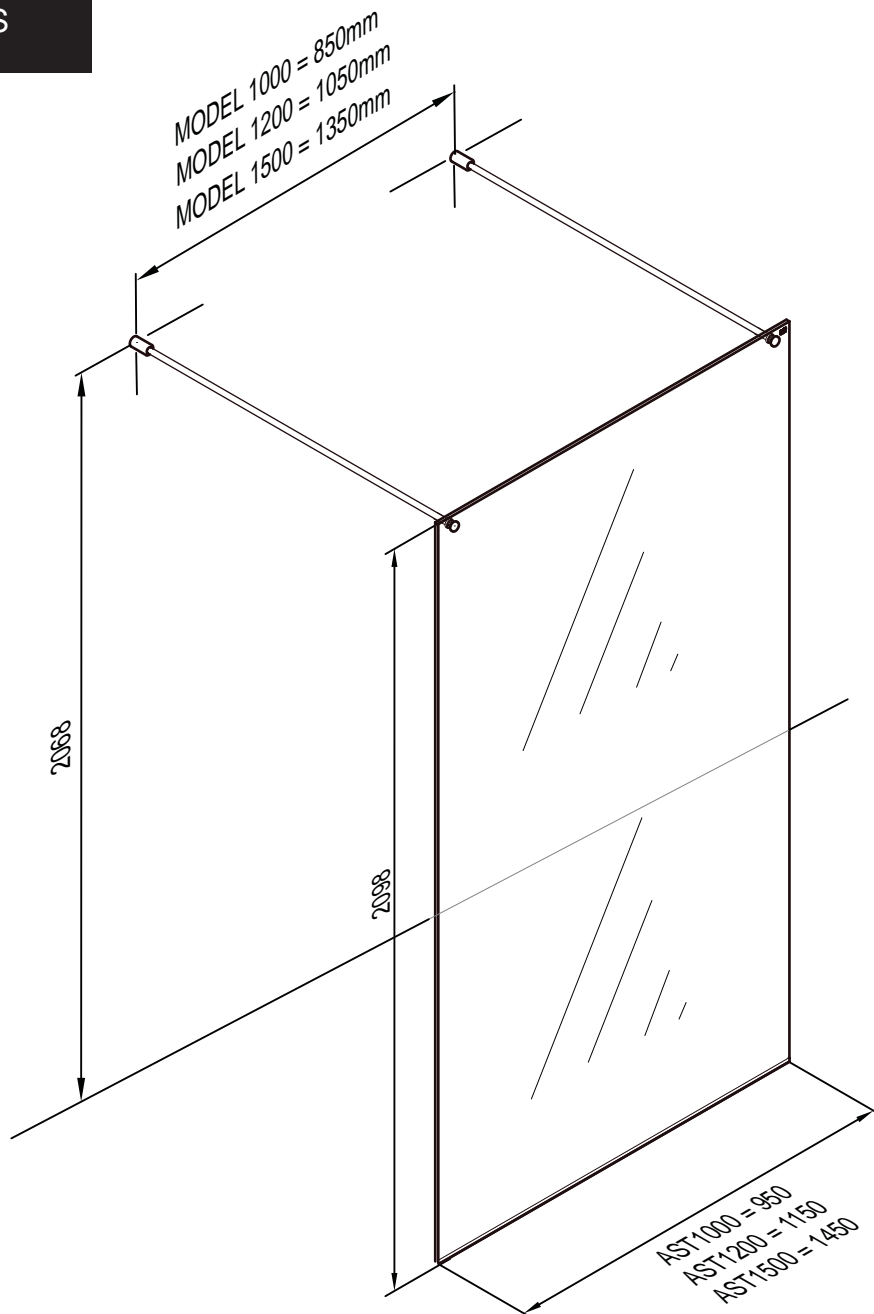
### PREPARATION

Please read complete installation instructions before fitting. **The panel assembly should be installed onto waterproof floor covering.** The panel can be positioned on a waterproof floor or along the rim of a Shower Tray. Spray from the Shower may extend beyond the entrances and we recommend waterproofing of the adjacent area, sloping towards the drain position.

Carefully remove panel from carton, do not place glass on hard floor or expose edges to impact.

**CAUTION: TEMPERED GLASS CANNOT BE CUT, POLISHED METAL AND CHROME CAN BE SCRATCHED.**

## DIMENSIONS

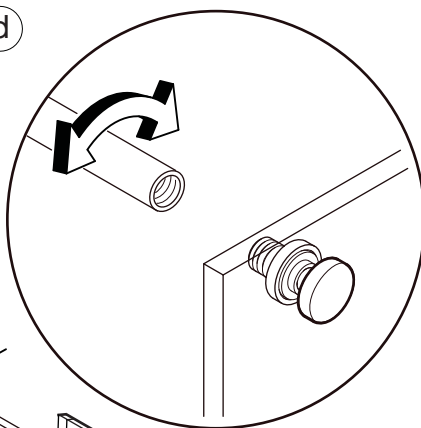


Dimensions are approximate due to nature of materials used

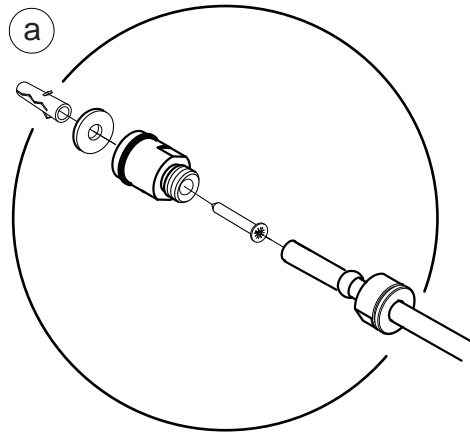
## STAGE 1



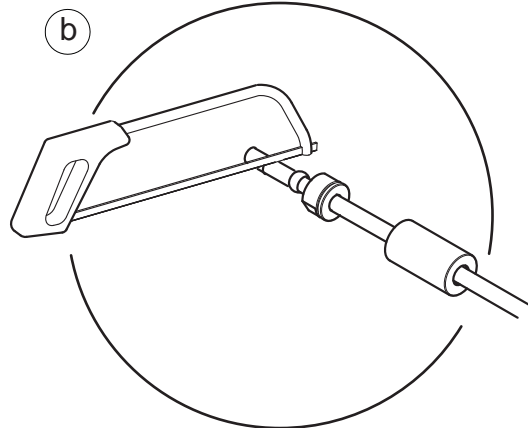
(d)



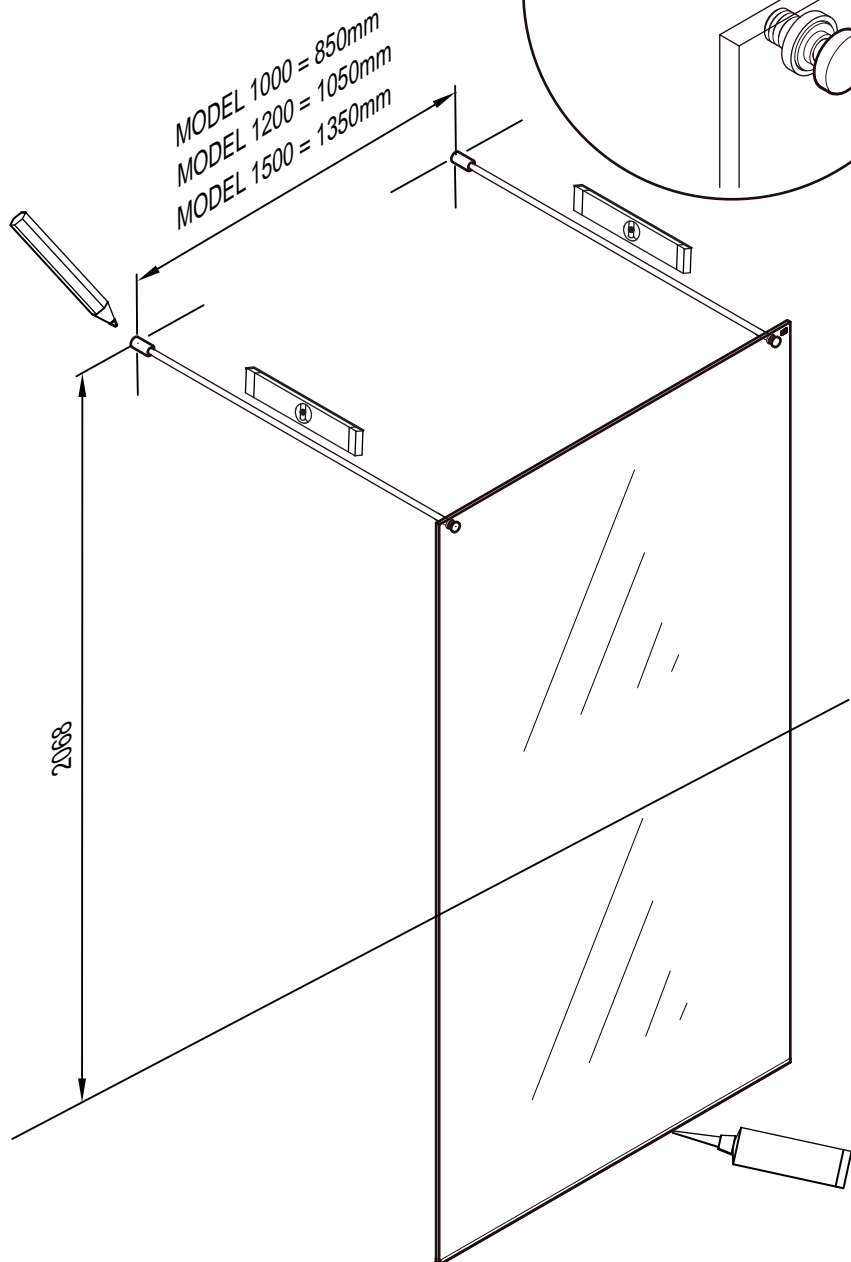
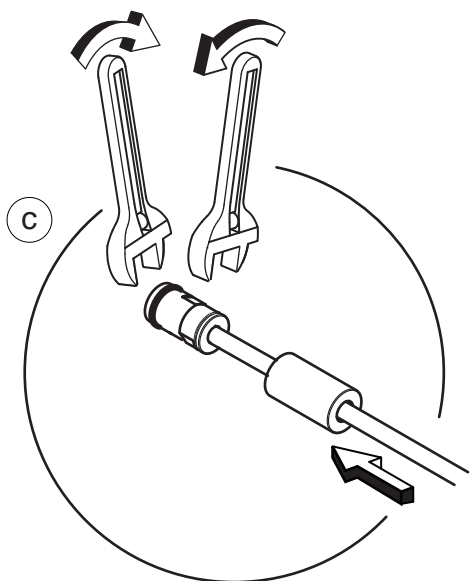
(a)



(b)



(c)



**We recommend two people are available.** Using a level, plumb and mark the centre of the Wall plate on the wall. As a guide measure 2070mm up from the finished floor surface and see dimension above for the dimension between centres relative to Model.

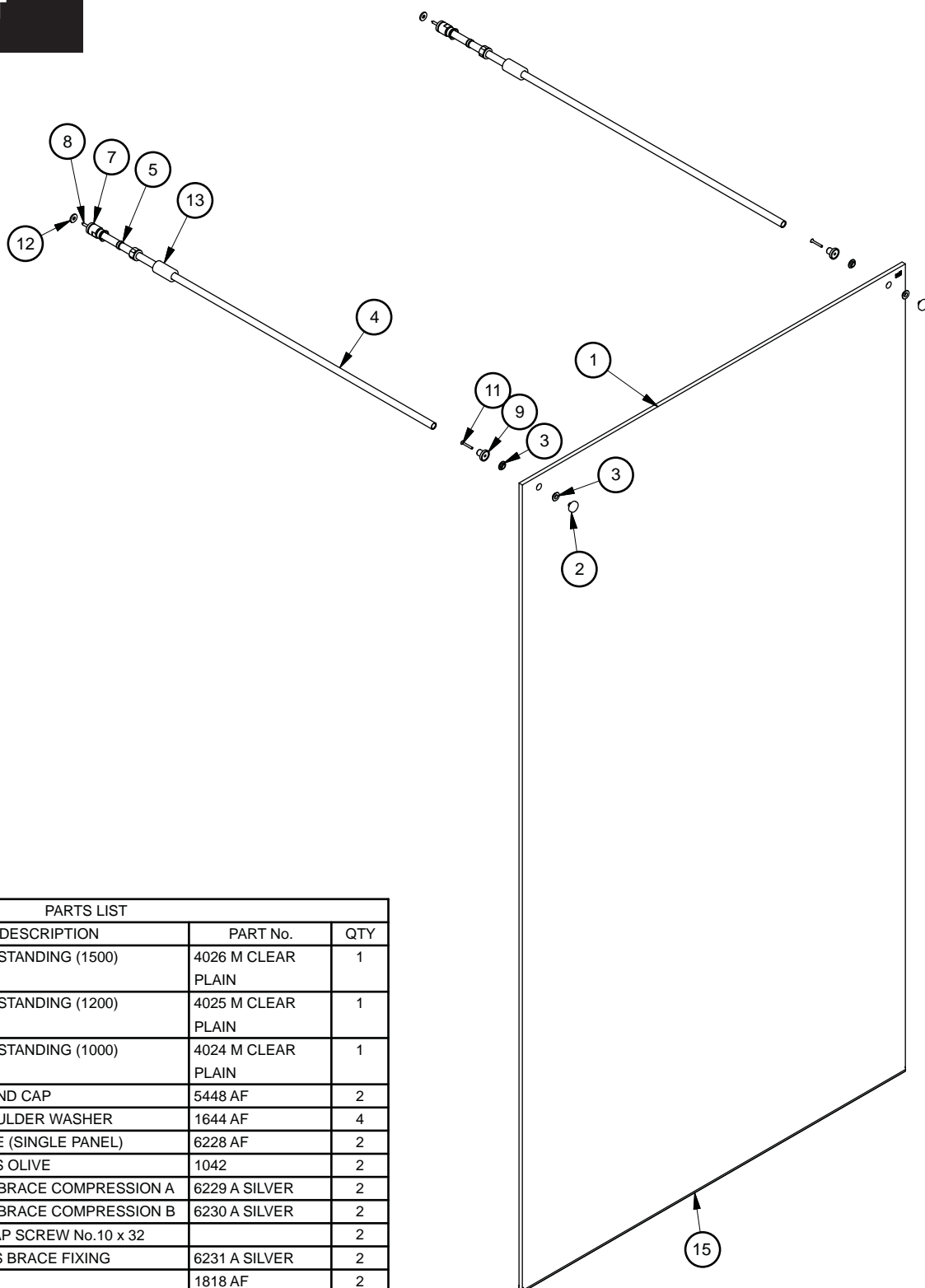
To determine the length of the Brace required, carefully measure the distance from the finished wall surface to position of the inside the Glass. If the Brace is too long, accurately measure and mark the length of the Brace bar to be removed (the Brace bar is offset 7mm from the wall inside the Wall plate) **(Do not cut the Threaded end)** (a), unscrew the Compression wall plate and nut to expose the end of the Brace bar and set aside (a) Cut to length (b).

Drill the fixing hole in the wall and insert the Wall plug. Fix the Wall plate to the wall using the No 10 x 32mm Csk screw ensuring the Rubber washer (Kit of Parts) is fitted behind the Wall plate (a).

Carefully lower the glass panel (Horizontal track at bottom) down onto the floor in position. Reassemble the Compression fitting at the wall side (ensure the Wall plate cover is fitted to the Bar at this point). Screw the threaded end of the Brace Bar onto the Glass fitting at the glass side (d). Using spanners, firmly tighten the Brace nut onto the Wall plate until fully tightened (d). Tighten the Brace Bar onto the the Glass fitting at the glass end (d). Slide the Wall plate cover over the Wall plate assembly (c).

Apply a bead of silicon on the outside of Glass horizontal frame between the frame in the recess provided and the floor/tray. Masking tape can be used to achieve a tidy edge to the sealant. Remove the masking tape immediately and allow the silicon to cure for 24 hours before using the shower.

## PARTS LIST



PARTS LIST			
ITEM	DESCRIPTION	PART No.	QTY
1	10mm FREE STANDING (1500)	4026 M CLEAR PLAIN	1
	10mm FREE STANDING (1200)	4025 M CLEAR PLAIN	1
	10mm FREE STANDING (1000)	4024 M CLEAR PLAIN	1
2	HEADRAIL END CAP	5448 AF	2
3	NYLON SHOULDER WASHER	1644 AF	4
4	15mm BRACE (SINGLE PANEL)	6228 AF	2
5	15mm BRASS OLIVE	1042	2
6	15mm WALL BRACE COMPRESSION A	6229 A SILVER	2
7	15MM WALL BRACE COMPRESSION B	6230 A SILVER	2
8	CSK SELF TAP SCREW No.10 x 32		2
9	10MM GLASS BRACE FIXING	6231 A SILVER	2
10	WALL PLUG	1818 AF	2
11	CSK SKT SCREW M4 x 30 CSK	DIN 7991 - M4x30CSK SKT	2
12	NEOPRENE WASHER O.D19.05	1540 AF	2
13	WALL COMPRESSION SLEEVE	6232 A SILVER	2
14	BS4518 O-Ring	0220-15	4
15	EDGE PROTECTOR STRIP	6091 CLEAR	1

Dimensions are approximate due to nature of materials used