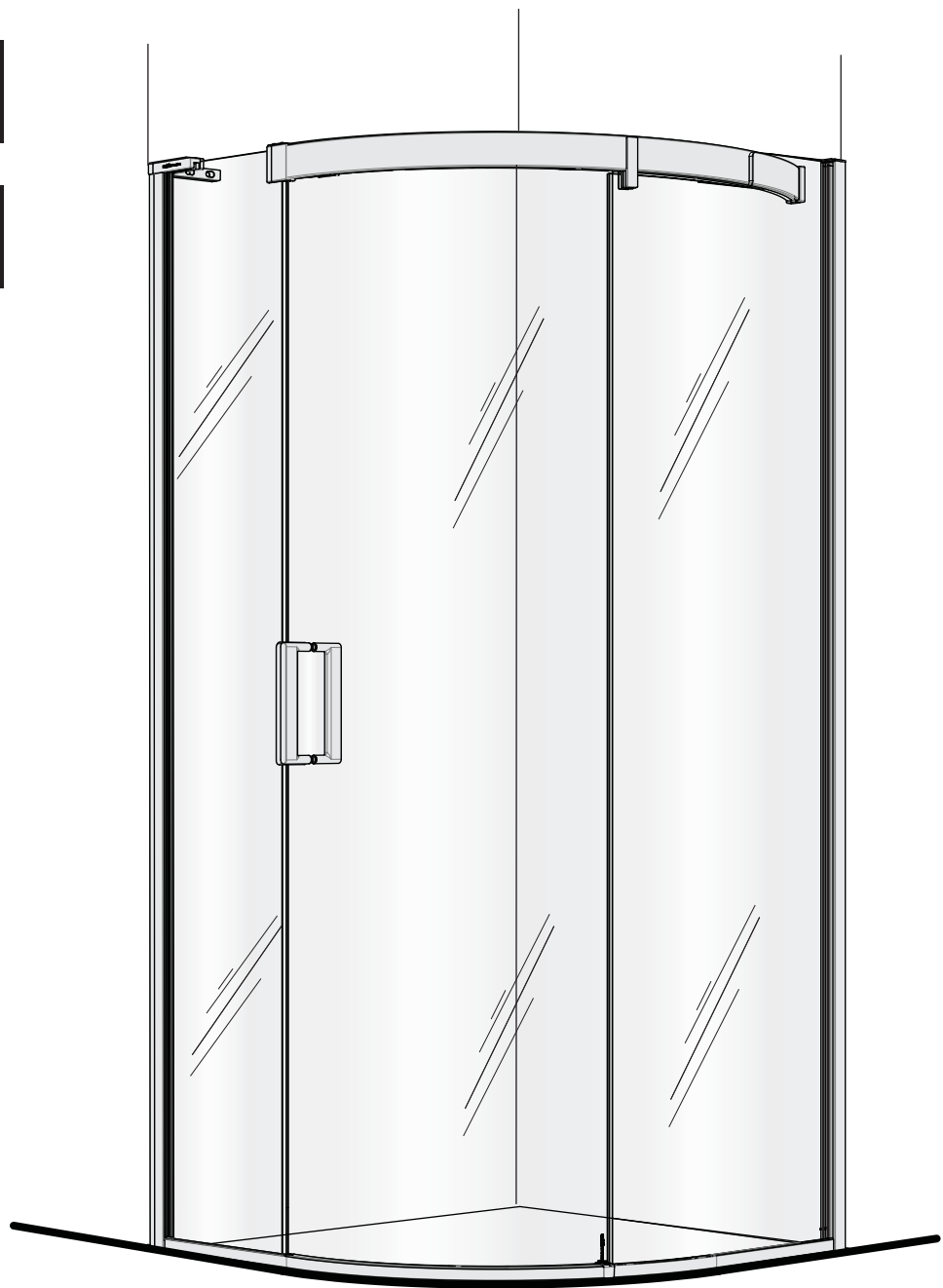


matki | S H O W E R I N G

EAUZONE PLUS ECS - CURVED CORNER SLIDER

INSTALLATION

PARTS LIST



MATKI PLC, CHURCHWARD ROAD, YATE, BRISTOL, BS37 5PL
TELEPHONE:01454 328816 (AFTER SALES) FAX:01454 328821 EMAIL: techsupport@matki.co.uk

CONFIGURATIONS



ECS LH OPENING



ECS RH OPENING



1200/1500 ECS LH CORNER (OFFSET)



1200/1500 ECS RH CORNER (OFFSET)

THE SATGES IN THIS INSTALLATION BOOKLET SHOW AN EPCC RH OPENING INSTALLATION,
REVERSE FOR LH OPENING

IMPORTANT

TOOLS REQUIRED

Masonry Drill bit 6mm, Tape Measure, Screw Drivers, Safety Glasses, Electric Drill, Level, Pencil, Adjustable Spanners, Non Slip Gloves

Before disposing of carton and/or commencing assembly, please check all the parts to ascertain that none are missing and they are all undamaged. No claim for missing/damaged parts will be accepted once the packing carton has been disposed of and/or assembly has commenced.

In case of query contact your Stockist with details of model number and details of serial number.

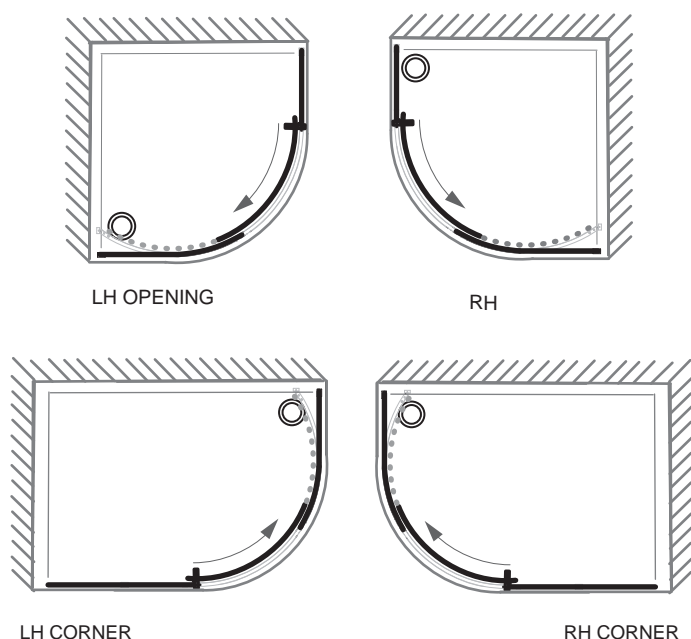
PREPARATION IMPORTANT

1. Please read complete installation instructions before fitting for Enclosure and Tray (if fitting).
2. We recommend the use of Safety glasses and Non slip gloves when handling the glass panels.
3. Ensure that the product can be **fixed to a solid masonry wall** or suitable **timber stud work grade C16/C24** in the area behind the Wall frames.
4. Shower trays or tiled floors **must be absolutely level** where enclosures are fitted
5. If fitting a tray we recommend a **drainage test** is carried out before the tray is tiled in position.
6. The assembly should be installed onto a waterproof wall covering and installed after the Tray and wall coverings are in place. Where Tiling lips are provided Trays should be let into the Wall with the Tiling lip flush with the wall to allow the Tiling to overlap the Tiling lip.
7. Seal between tray and tiles. Remove any excess sealant from the area/joint between the tray and the tiles where the Wall Mount is to be fitted. This will ensure the Wall mount fits correctly to the wall and tray/or tiled floor.

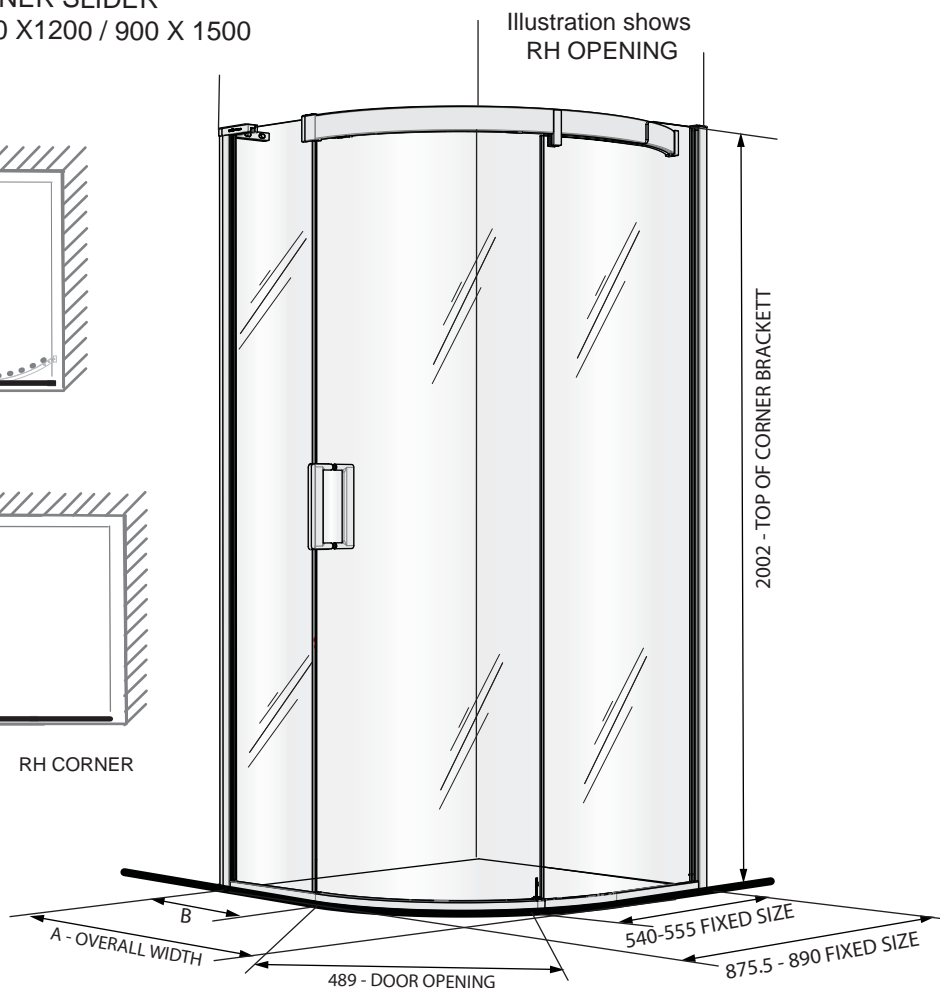
CAUTION: TEMPERED GLASS CANNOT BE CUT, POLISHED METAL AND CHROME CAN BE SCRATCHED. CAREFULLY REMOVE ASSEMBLY FROM CARTON, DO NOT PLACE GLASS ON HARD FLOOR OR EXPOSE EDGES TO IMPACT. DO NOT CUT TOP TRACK IN ANY CIRCUMSTANCES.

DIMENSIONS

CURVED CORNER SLIDER
900 X 900 / 900 X 1200 / 900 X 1500



Model	A	B
ECS900	875.5-890	325-330
ECS1290	1175.5-1190	625-630
ECS1590	1475.5-1490	925-930

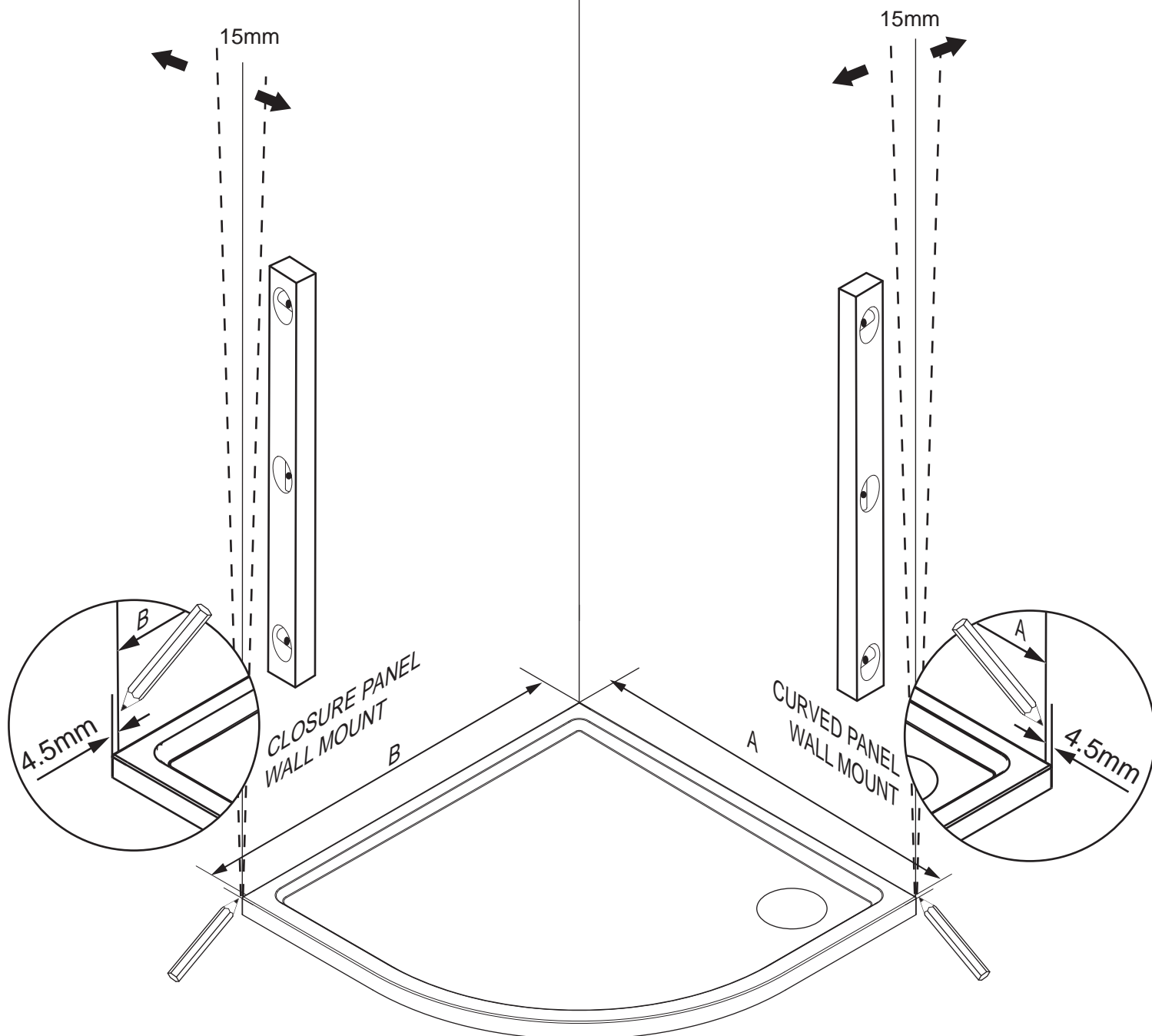


STAGE 1

INSTALLATION FOR A RH OPENING UNIT

MODEL	A *	B *
CURVED SLIDER		
EPCC900	875.5 - 890	875.5 - 890
EPCC1290	1175.5 - 1190	875.5 - 890
EPCC1590	1475.5 - 1490	875.5 - 890

* DIMENSIONS TO OUTSIDE FACE OF THRESHOLD TRACK



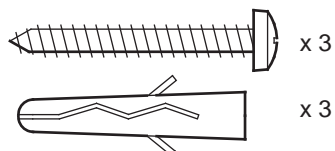
This stage is describing the placement of the Curved fixed panel wall mount and straight fixed panel wall mount.

Important – Check the walls for upright and that the product dimensions will fit the situation before installation. If the wall is leaning outward or inwards at the top check that the product will fit within the maximum and minimum adjustment range.

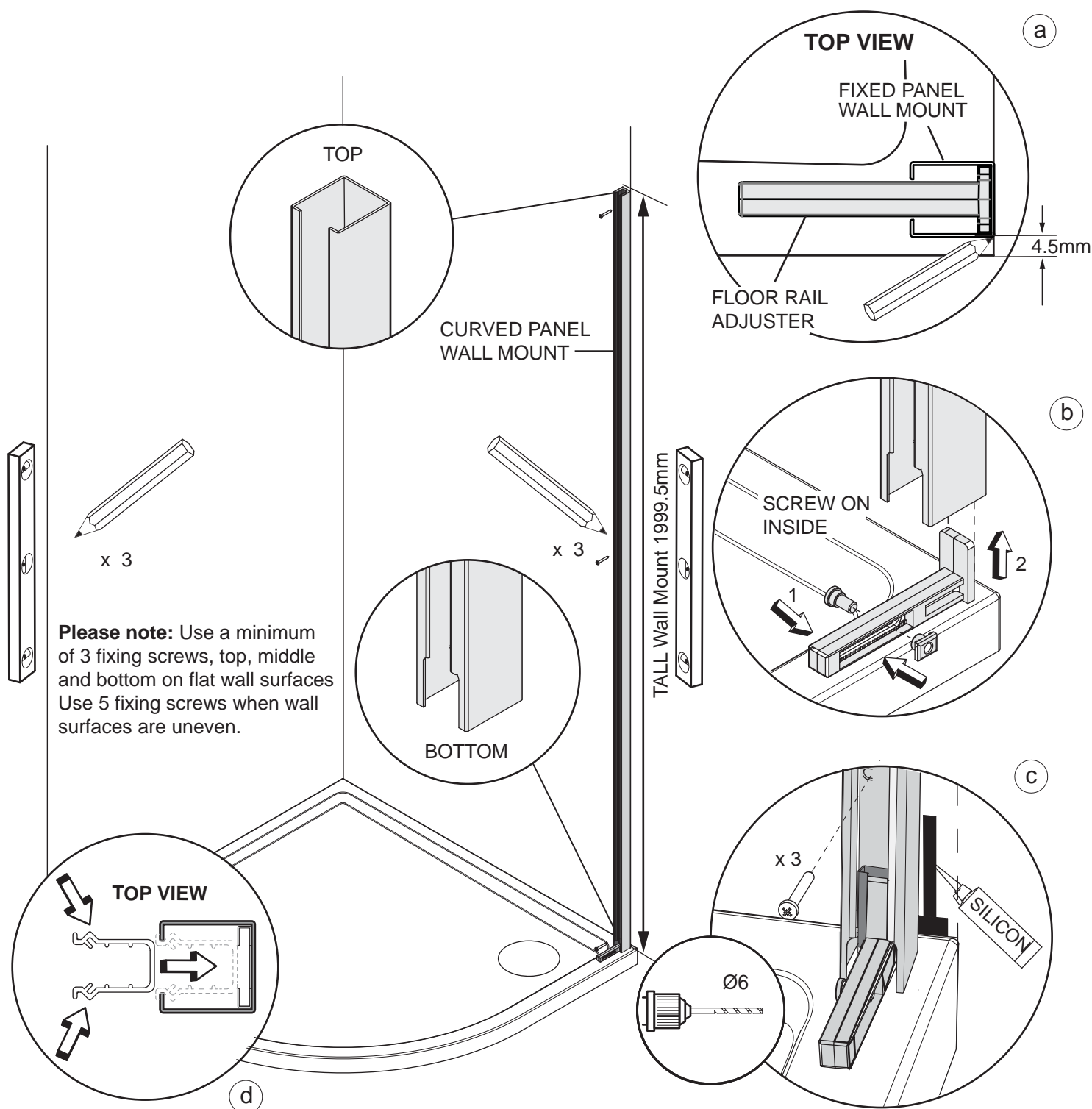
The fixed panels have adjustable wall mounts to compensate for size adjustment or out of plumb walls or a combination of adjustment and out of plumb. There is 15mm of adjustment in each wall mount.

If fitting the enclosure on a Matki ULC40 tray position the outside face of the wall mounts approximately 4.5mm in from the outside edge of the tray. If fitting directly onto a tiled surface please see the maximum and minimum dimensions in the table above to the outside face of the wall mounts.

STAGE 2



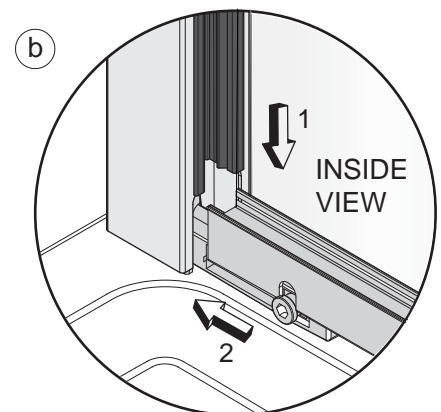
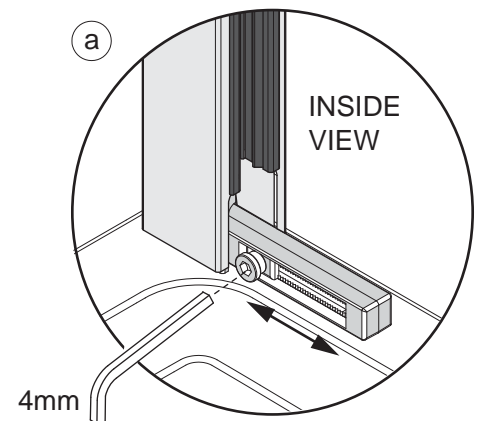
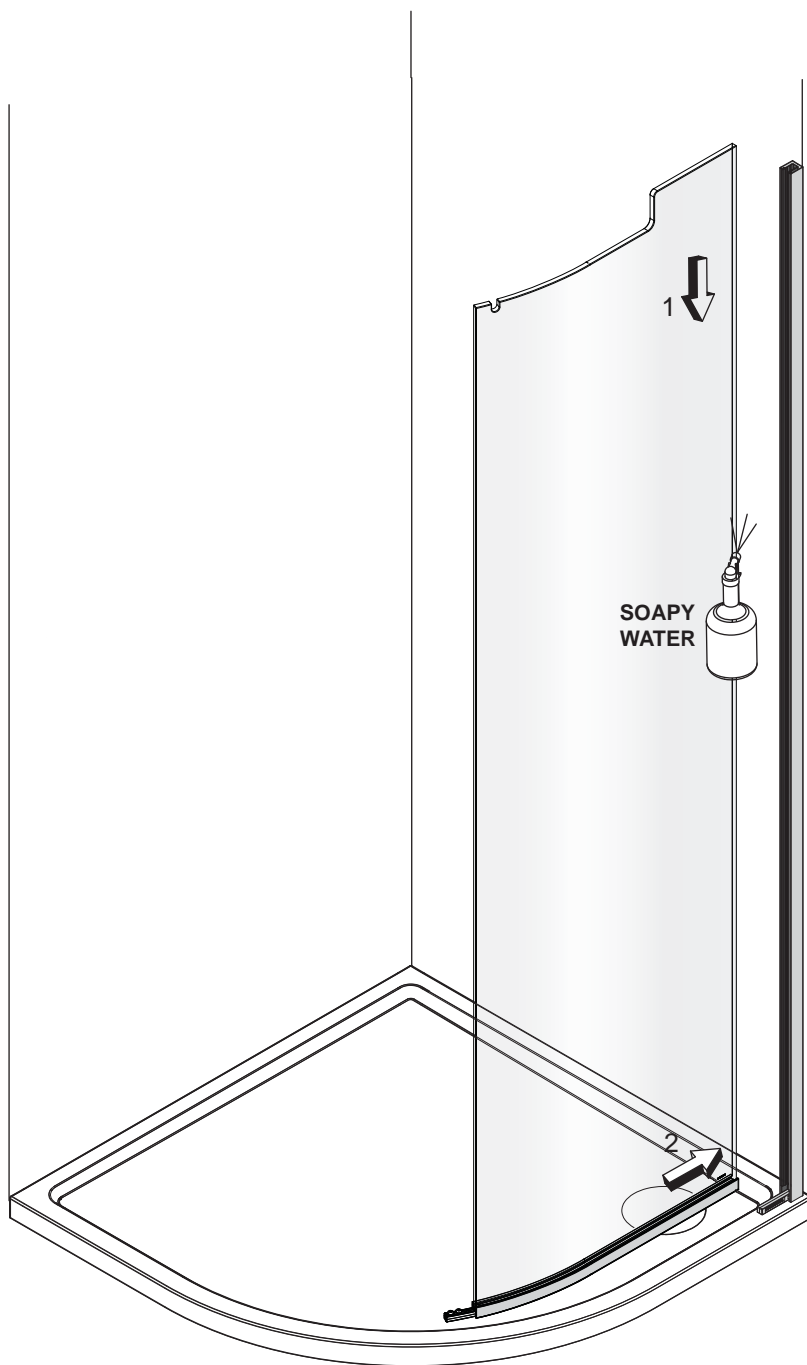
STAGES 2, 3 & 4 SHOWS THE CURVED PANEL INSTALLATION FOR A RH DOOR OPENING.



This stage is describing the fitting of the Fixed Curved panel wall mount.

- The Curved fixed panel wall mount has a top and bottom (Cut out at the bottom of wall mount). Position the wall mount as required, plumb the wall mount for upright, mark the fixing holes in the centre of the slots. Drill 3 x fixing holes in the wall and insert the wall plugs. Clean the area.
- Before fitting the wall mount fit the curved panel floor rail adjuster (supplied in the kit of parts) into the bottom of the wall mount. The adjuster clamping screw must face inwards, remove and refit the screw and nut assembly with the screw on the inside if required. Fit the adjuster up the back of the wall mount in the recess shown.
- Apply silicon sealant to the area behind the wall mount between the tray and tiles and 100mm up the wall, central to the width of the wall mount. Fit the wall mount using the No.8 x 38mm pan head screws.
- Fit the wall mount seals into both the wall mounts by pinching the sides together and fitting them into the wall mounts until they snap into position, the bottom of the seal should sit on top of the horizontal extrusion.

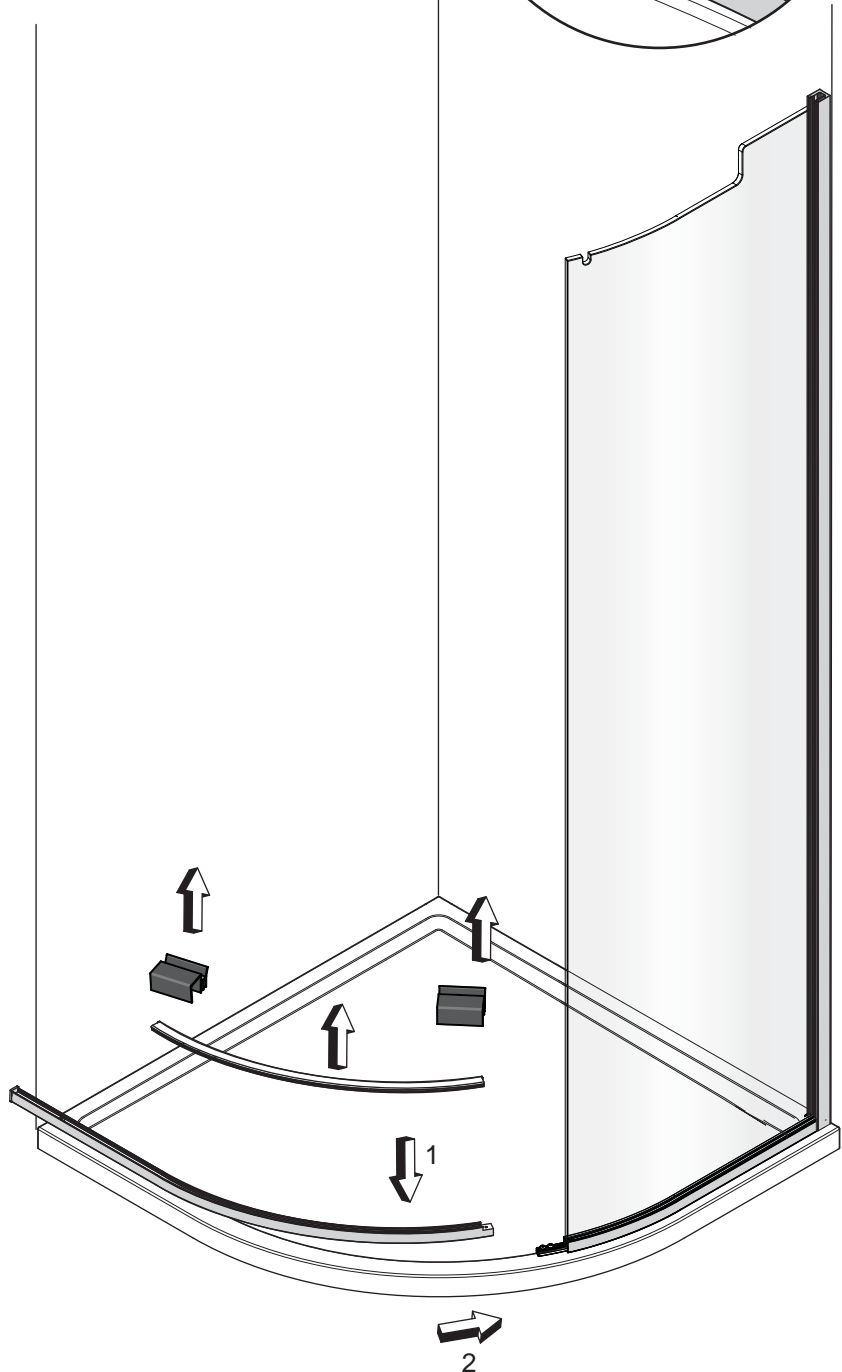
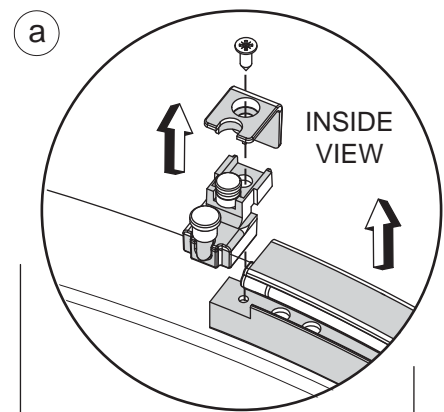
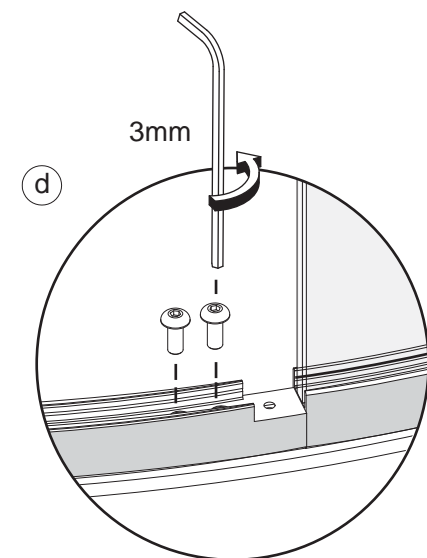
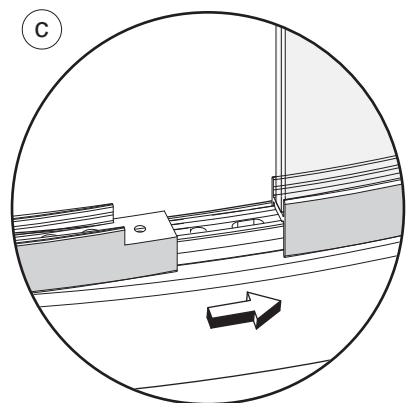
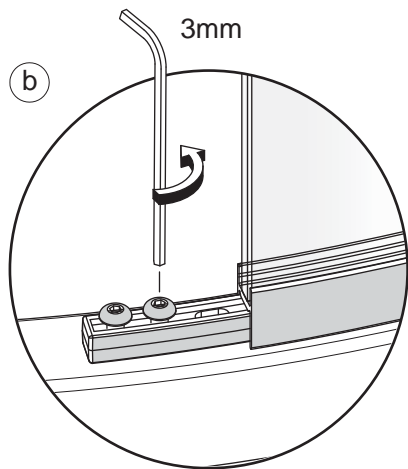
STAGE 3



This stage is describing the fitting of the Fixed Curved panel.

- a.** Loosen the screw on the floor rail adjuster bracket so that it is at the maximum adjustment and can move freely.
- b.** Lightly wet the edge of the fixed panel with soapy water gently lower the fixed curved panel onto the adjuster ensuring the adjuster screw locates into the notch on the inside of the curved panel floor rail. Then gently push the fixed glass panel into the wall mount.

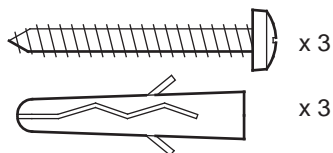
STAGE 4



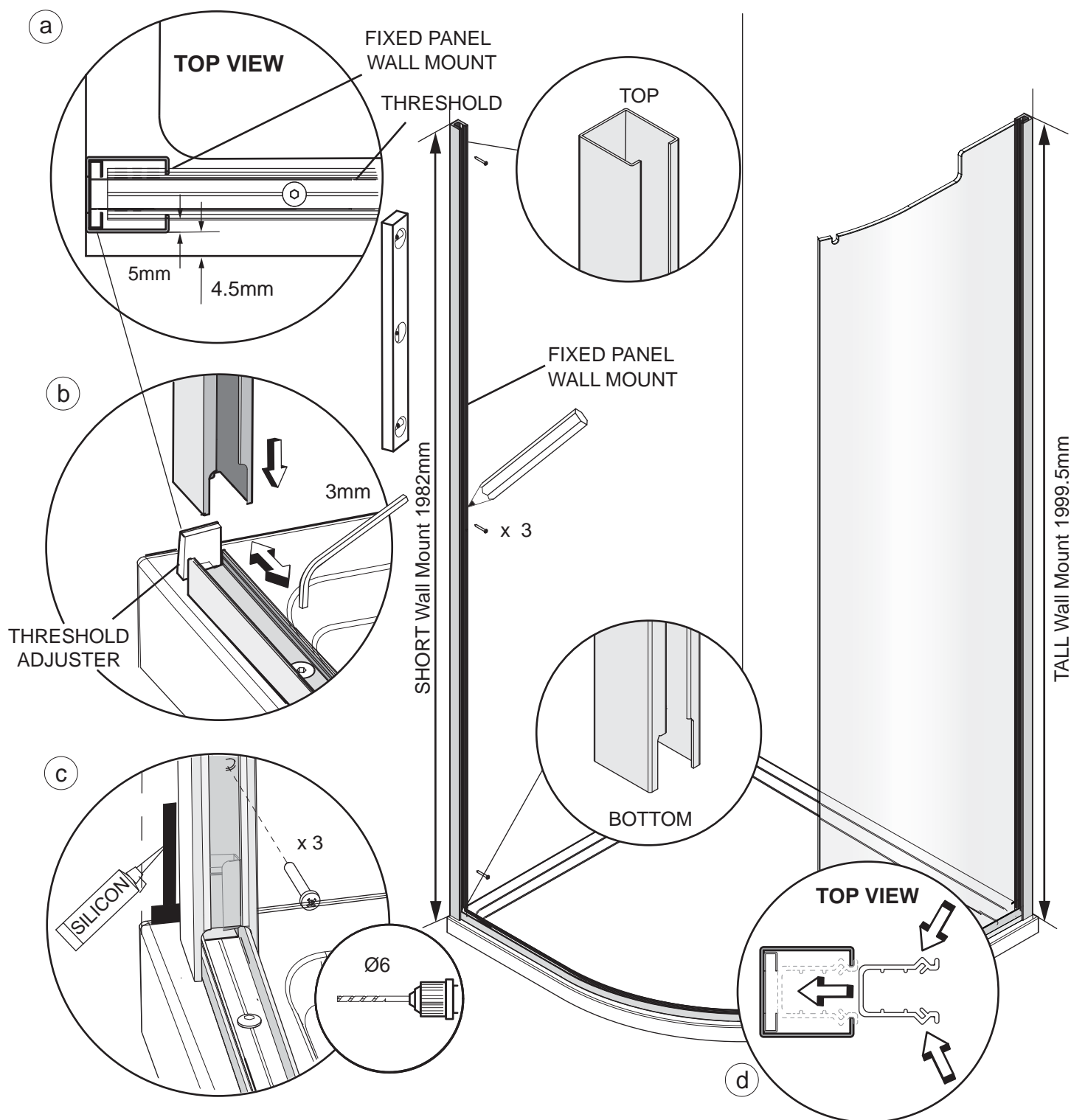
This stage is describing the fitting of the floor rail.

- Remove the factory assembled guide block from the floor rail and threshold cover. Carefully set aside for re-fitting.
- Before fitting the floor rail remove and set aside the 2 x M5 x 12 socket screws from the floor rail bracket in the end of the curved fixed panel.
- Fit the floor rail over the floor rail bracket until it meets the curved fixed panel. Ensure the joint is tight between the floor rail and fixed panel
- Secure with 2 x M5 x 12 socket screws using the 3mm allen key.

STAGE 5



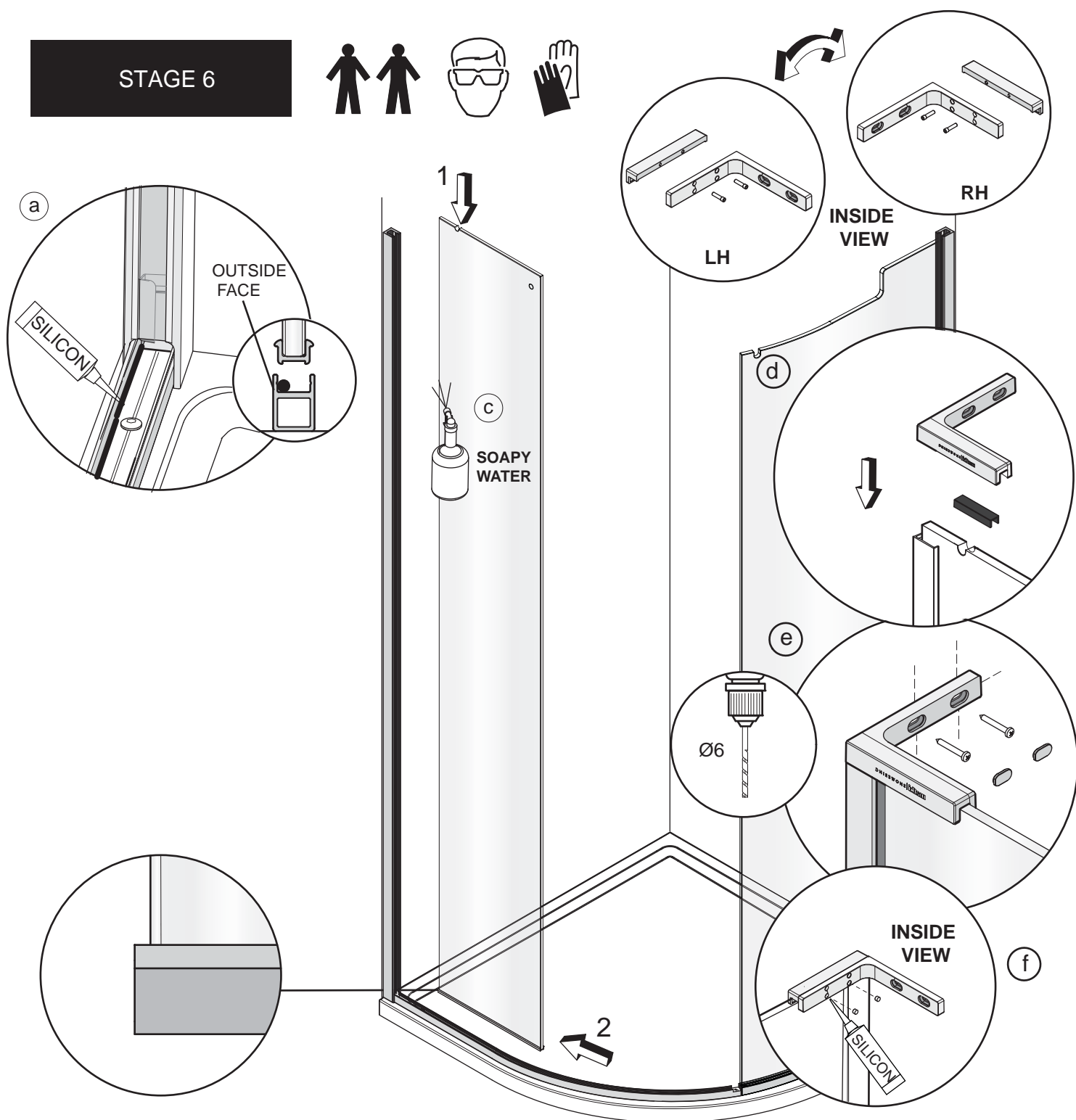
STAGES 5 & 6 SHOWS THE FIXED PANEL INSTALLATION FOR A RH DOOR OPENING.



This stage is describing the fitting of the Fixed Curved panel wall mount.

- The fixed panel wall mount has a top and bottom (Cut out at the bottom of wall mount). Position the wall mount as required, plumb the wall mount for upright, mark the fixing holes in the centre of the slots. Drill 3 x fixing holes in the wall and insert the wall plugs. Clean the area.
- Before fitting the wall mount fit the floor rail into the bottom of the wall mount. Ensure the threshold adjuster fits up into the back of the wall mount extrusion in the recess shown. Adjust the position of the threshold adjuster as required to align the curved floor rail evenly from the front edge of the tray.
- Apply silicon sealant to the area behind the wall mount between the tray and tiles and 100mm up the wall, central to the width of the wall mount. Fit the wall mount using the No.8 x 38mm pan head screws.
- Fit the wall mount seals into both the wall mounts by pinching the sides together and fitting them into the wall mounts until they snap into position, the bottom of the seal should sit on top of the horizontal extrusion.

STAGE 6



This stage is describing the fitting of the straight fixed panels.

a. Apply a bead of silicon along the full length of the outer inside edge recess of the straight fixed panel floor rails where the fixed panel is to be fitted.

Important -The frame on the bottom of the fixed glass panel is slightly longer than the glass on one side. The opposite side is factory assembled to be flush. Fit the fixed glass panel with the longer end bottom frame into the wall mount.

c. Lightly wet the edge of the fixed panel with soapy water and gently lower the panel into the floor rail then into the wall mount.

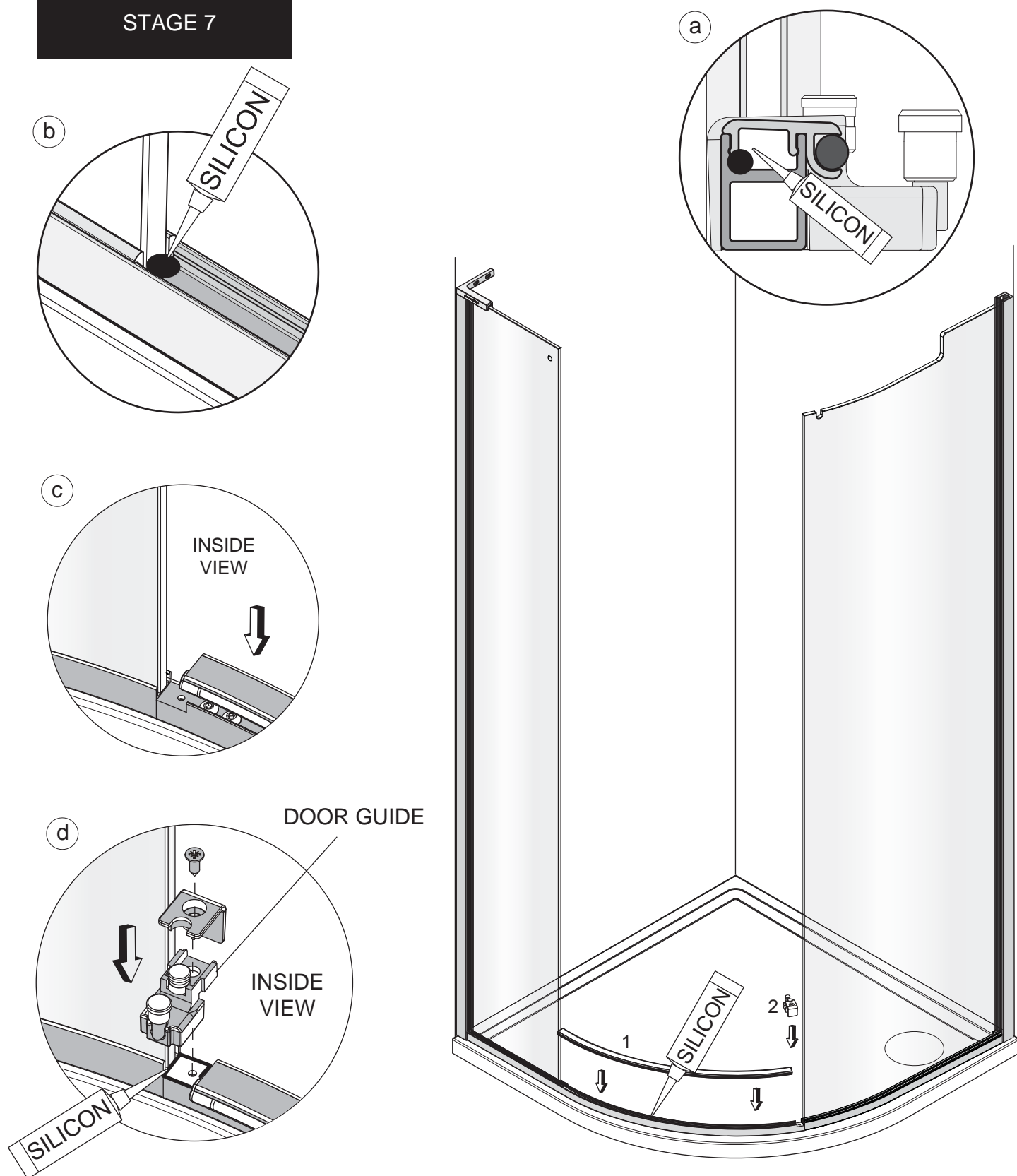
d. Fitting of Side panel top bracket: Fit the rubber ' U ' shaped gasket onto the top edge of the glass with the grooved face of the gasket facing outwards. Fit the wall bracket, fully assembled, over the glass and onto the top of the wall mount.

e. Mark the centre of the slotted holes in the wall bracket onto the wall. Remove the wall bracket and drill and fix the wall plugs.

f. Refit the wall bracket. Clamp the bracket onto the glass by tightening the clamping screws on the inside of the bracket. Fit the clamping screw cover caps into the two unused holes on the inside of the wall bracket. Apply a small spot of silicon in the holes before fitting the caps.

e. Fix the bracket to the wall using the No.8 x 50 Pan head screws and fit the bracket screw cover caps

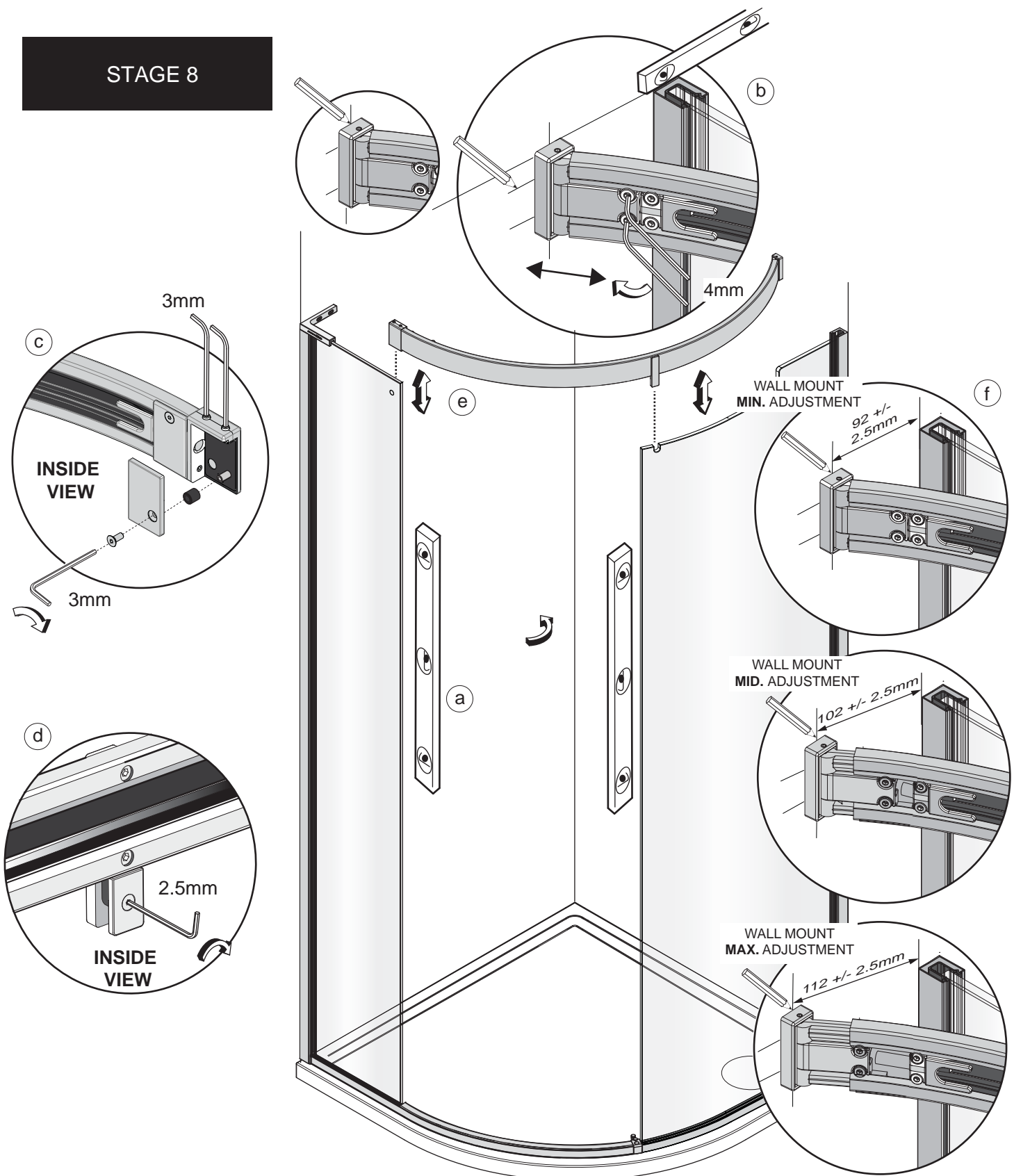
STAGE 7



This stage is describing the fitting of the threshold and guide block.

- a.** Apply a bead of silicon sealant along the outer inside edge of the floor rail in the door entrance where the threshold cover is to be fitted.
- b.** Apply a bead of silicon in the floor rail at the end face of the straight fixed panel where the threshold cover is to be fitted.
- c.** Fit the curved threshold cover onto the floor rail.
- d.** Apply a small bead of silicon to the joints between the guide and floor rail, glass and guide, guide and threshold cover. Refit the guide. Adjust the straight fixed panel if required to close any gap between the glass and threshold cover.

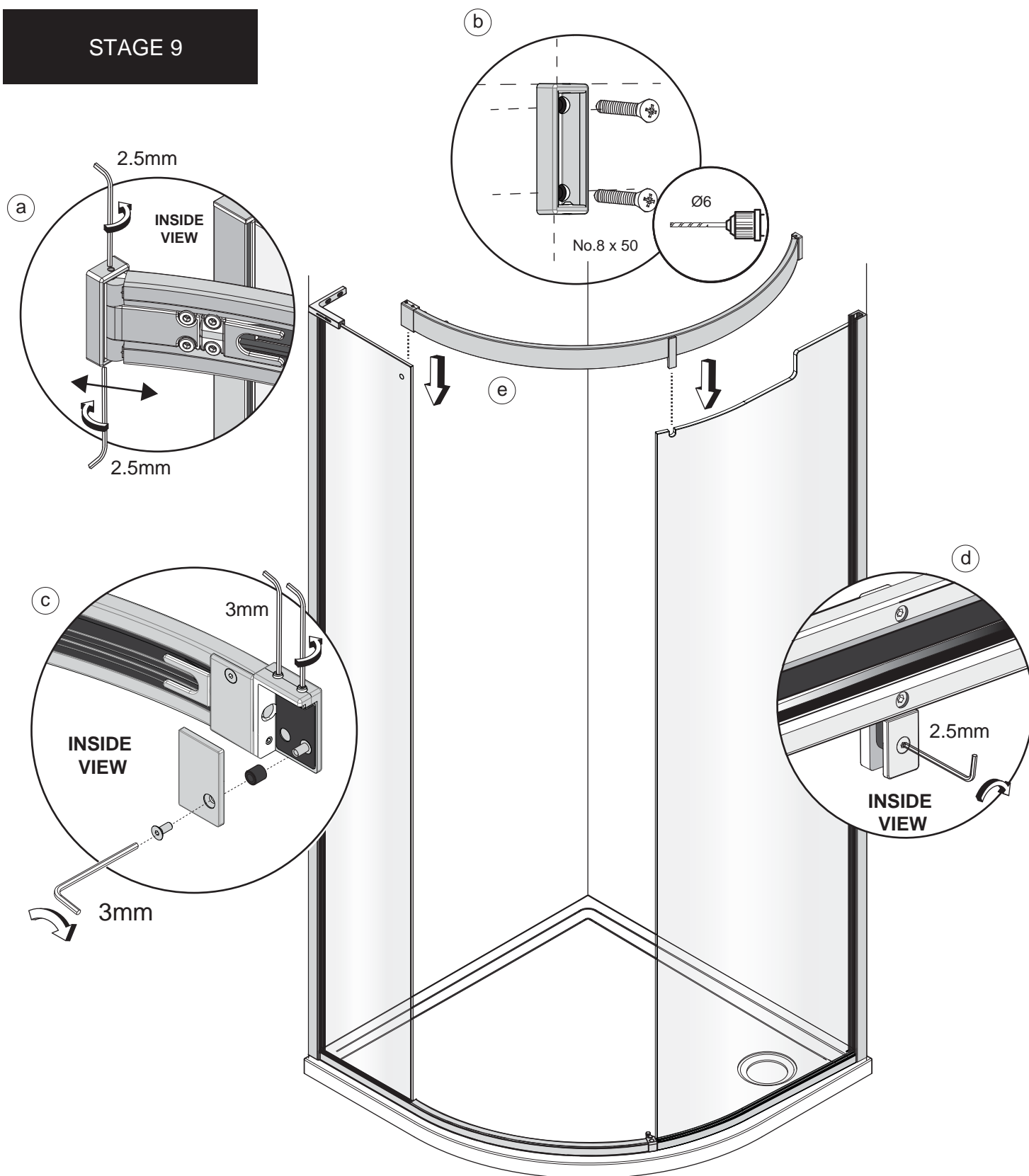
STAGE 8



This stage is describing the temporary fitting of the top track to position the top track wall fixing.

- a.** Before fitting the top track plumb the glass panels to check for vertical.
- b.** Level a horizontal pencil line from the top of the Curved fixed panel wall mount.
- c.** Remove the back plate from the top track end glass clamp, place to the side for later. Loosen off the top grub screws.
- d.** Loosen the top track glass clamp.
- e.** Lower the top track into position, ensuring the top track end glass clamp goes through the hole in the fixed panel and the top track glass clamps fit into the slot on the top edge of the curved glass panel.
- f.** Adjust the top track wall fixing adjuster to the wall. Align the top of the wall plate to the reference line and mark around to determine the fixing position.
- e.** The central position of the wall plate from the inside of the wall mount will vary depending on the plumb of the wall, tile thickness and door relative to tray position. For Reference: on Minimum adjustment 92 mm
on Maximum adjustment 112 mm

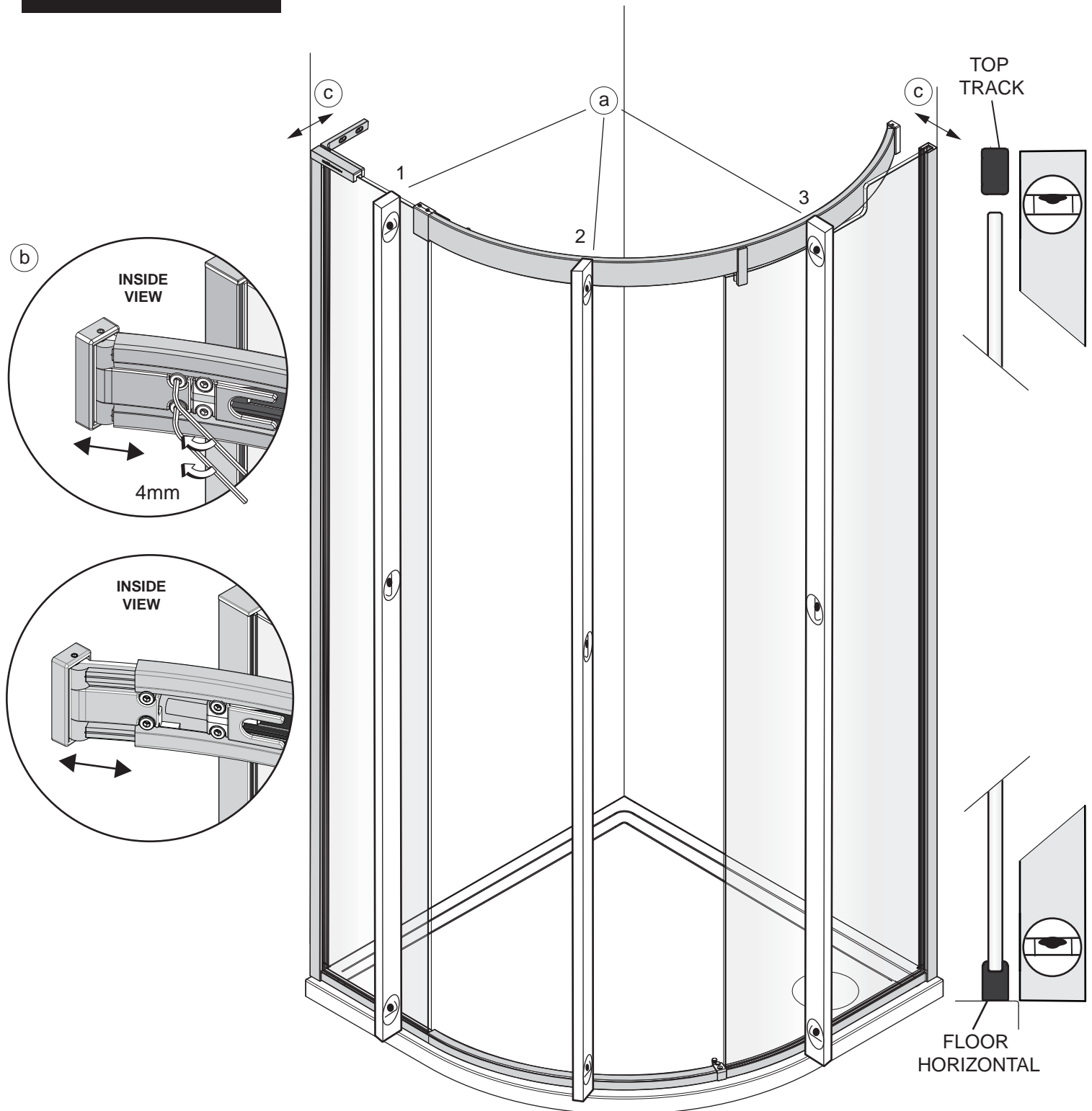
STAGE 9



This stage is describing the fitting of the top track.

- Remove the top track wall plate from the adjuster by loosening the set screws in the top and bottom using the 2.5mm allen key. Place the wall plate on the wall on the previously marked position and mark the hole positions. Remove the top track and place carefully to the side.
- Drill 2 x fixing holes in the centre of the slots and insert the wall plugs. Secure the wall plate using the No.8 x 50mm CSK head screws aligning the top track wall plate in the vertical position.
- Lower the top track into position, ensuring the top track end glass clamp goes through the hole in the fixed panel and the top track glass clamps fit into the slot on the top edge of the curved glass panel. Re-attach the back plate and tighten down the top grub screws using the 3mm allen key. **DO NOT OVERTIGHTEN.**
- Re-attach the end track glass clamp.
- Tighten the top track glass clamp.
- Tighten the wall adjuster to the wall plate with the set screws in the top and bottom of the wall plate using the 2.5mm allen key.

STAGE 10



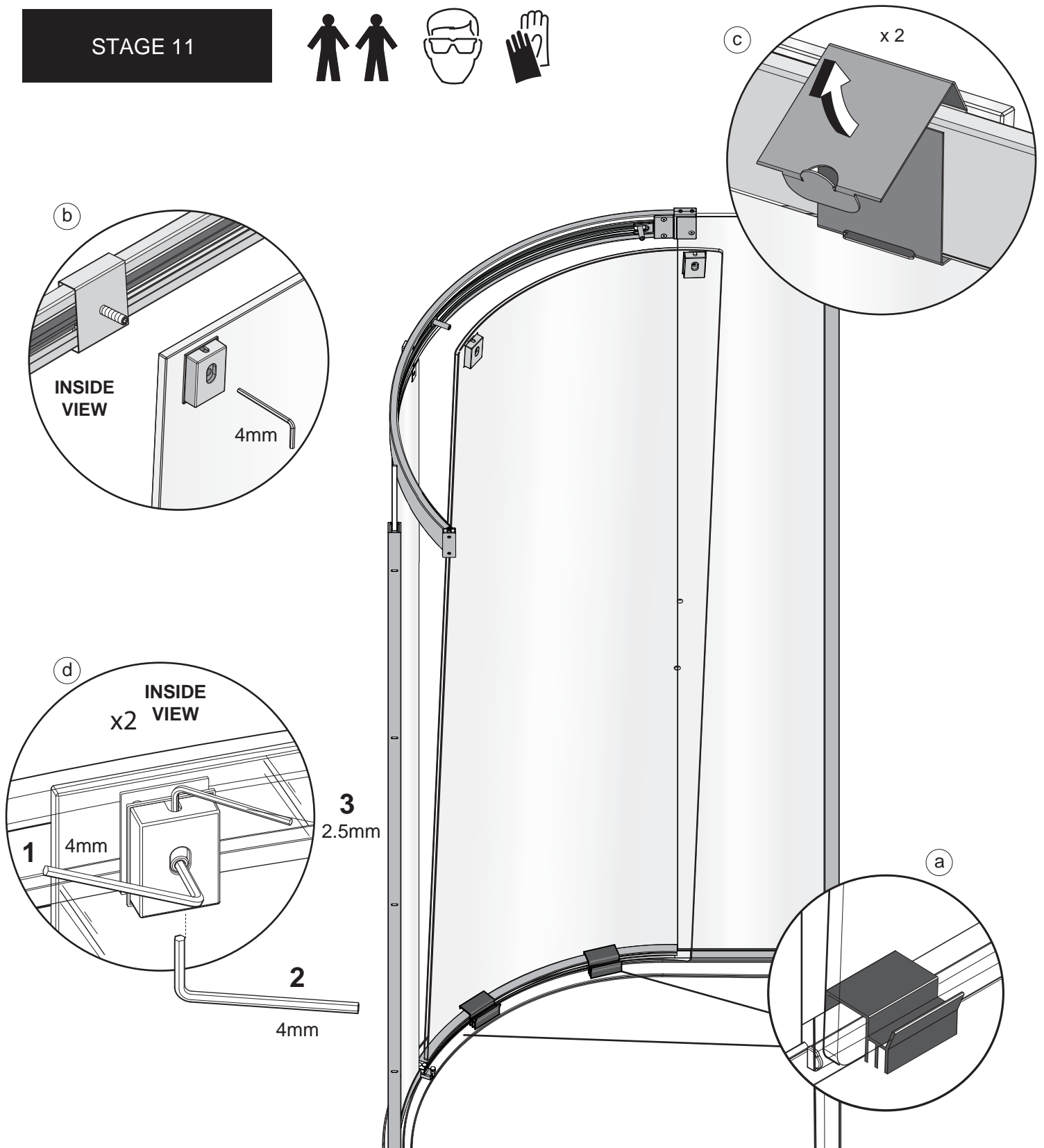
This stage is describing checking that the Top track and Bottom track are concentric.

a. It is important for the smooth operation of a curved enclosure that the top track and bottom track curvatures are concentric. Check the concentricity by carefully placing a long 2m level between the outside face of the top and bottom track in the 3 positions shown and check for vertical. Vertical will indicate that the curvatures are matching. Protect the top and bottom tracks from scratches with masking tape on the face of the level to prevent metal to metal contact.

b. If not vertical then adjustment may be required to the top track position via the adjustment in the top of the wall mount and wall adjuster in the top track. Adjusting these will move the top of the fixed glass panels and clamping positions outwards or inwards as required. It may be necessary to move the wall adjuster plate horizontal position using the slot in the base of the part. Stage 9b.

c. The track position can also be moved outwards or inwards by carefully tapping the wall mounts out of vertical via the slotted holes in the wall mounts. This will effectively move the fixed glass panels inwards or outwards at the top by the wall. Protect the wall mount metal surfaces from damage if adjusting by tapping out of vertical.

STAGE 11



This stage is describing attaching the door.

a. Important - Fit the plastic door supports to the Threshold track at either side of the Door opening.

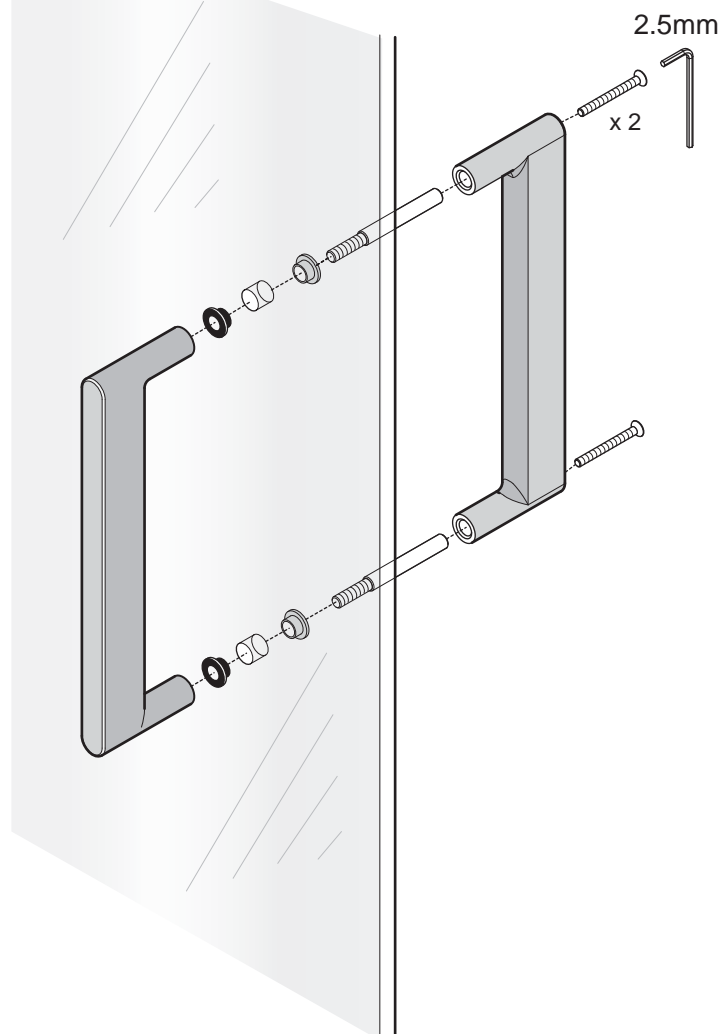
b. Load the door glass firstly onto the threshold protectors and door guide and then carefully guide the door up to the door roller threads and wind them through the door roller blocks fixed to the glass.

c. Remove both the cardboard top track door roller guides by pulling the tabs and unfolding them away from the top track.

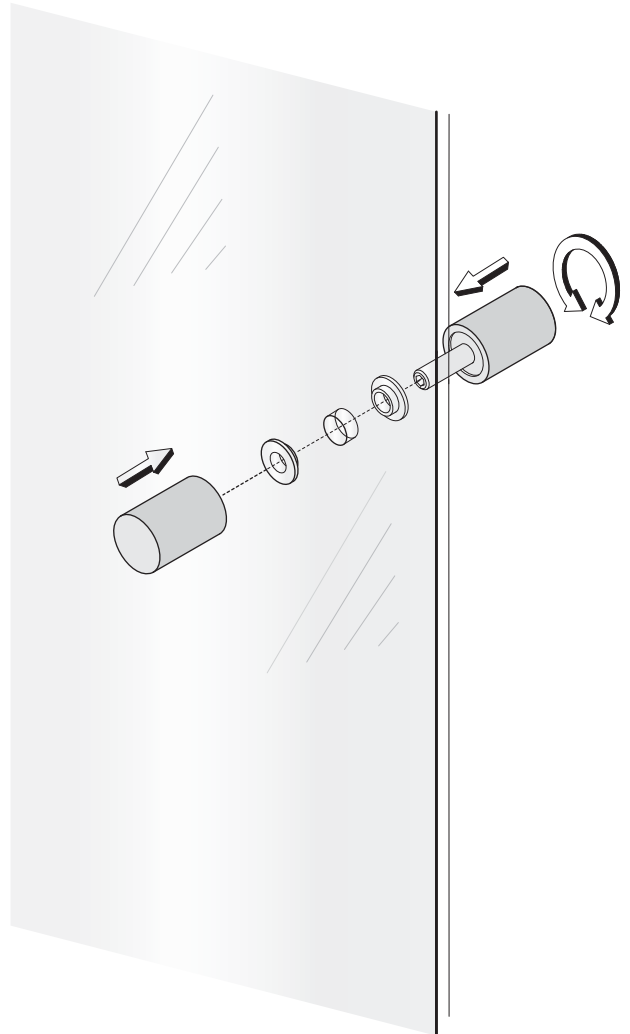
d. Adjust the door panel if required so that it runs parallel to the door opening by adjusting the Roller blocks on the inside of the door. To adjust the door away from the top track rotate the central set screw **E1** clockwise using the 4mm allen Key. To adjust the door to the top track, rotate the central set screw **E1** anti-clockwise. The door glass can also be raised or lowered by the adjustment screw **E2** in the underside of the roller block using the 4mm allen key supplied. Rotate clockwise to lower the door, rotate anti-clockwise to raise the door. Lock the adjustment with the set screw **E3** in the top of the roller block using the 2.5mm allen key supplied.

STAGE 12

LINEAR BAR HANDLE



SINGLE STRAIGHT HANDLE



This stage is describing the fitting of the Door Handle

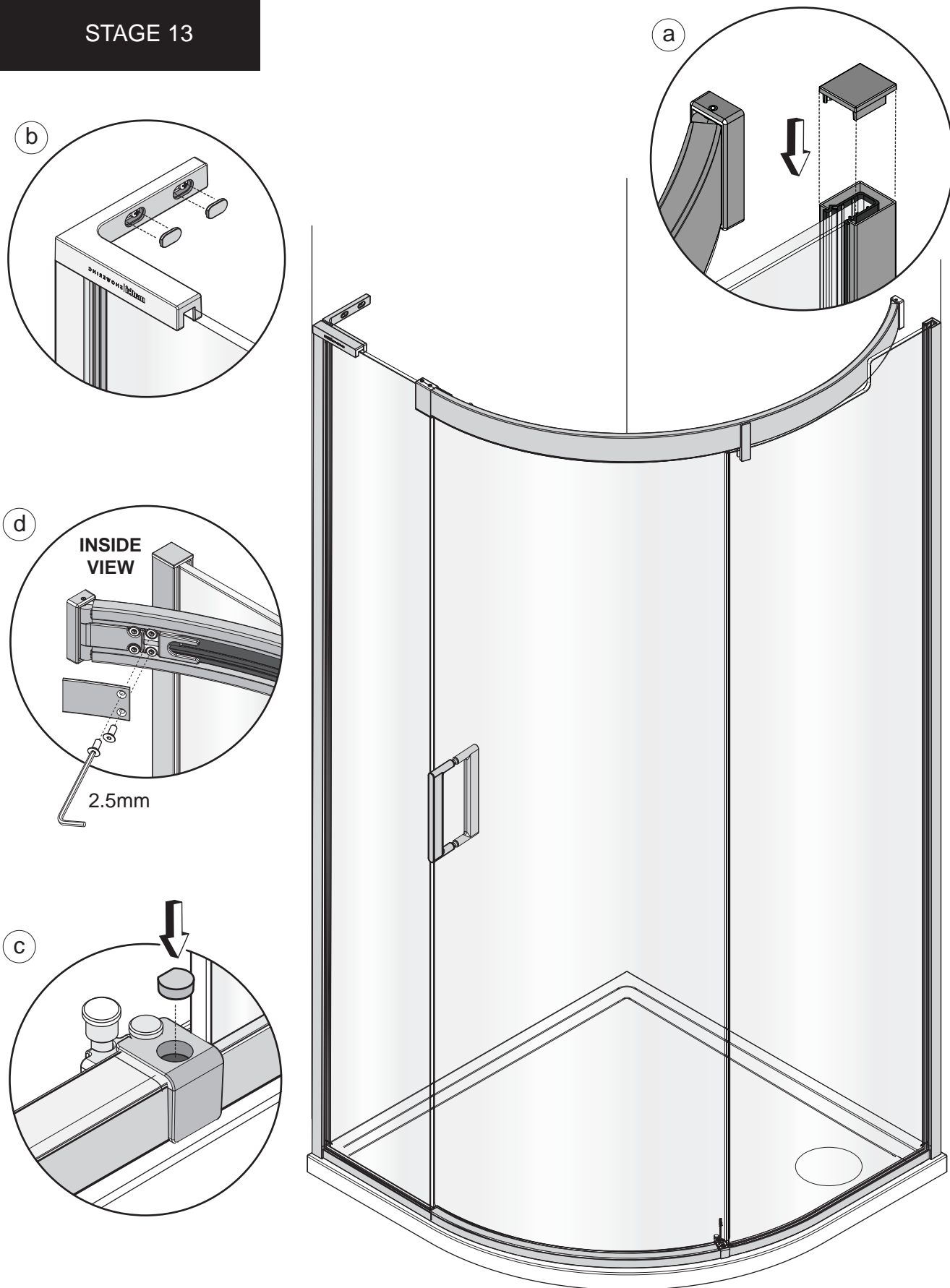
Linear Bar handle

Disassemble the handle by unscrewing the 2 x M4 x 40 Csk socket screws and removing the back handle. Place the 4 x black glass washers either side of the 2 holes in the Door glass. Carefully fit the front Handle and Handle connectors through the 2 holes in the Door glass. Fit the back Handle onto the Handle connectors and fix into position by fitting the 2 x M4 x 40 Csk socket screws.

Single Straight handle

Fit the Door handles to the glass ensuring that the white handle washers are placed in the hole in the glass between the handles and the door glass, screw together until tight.

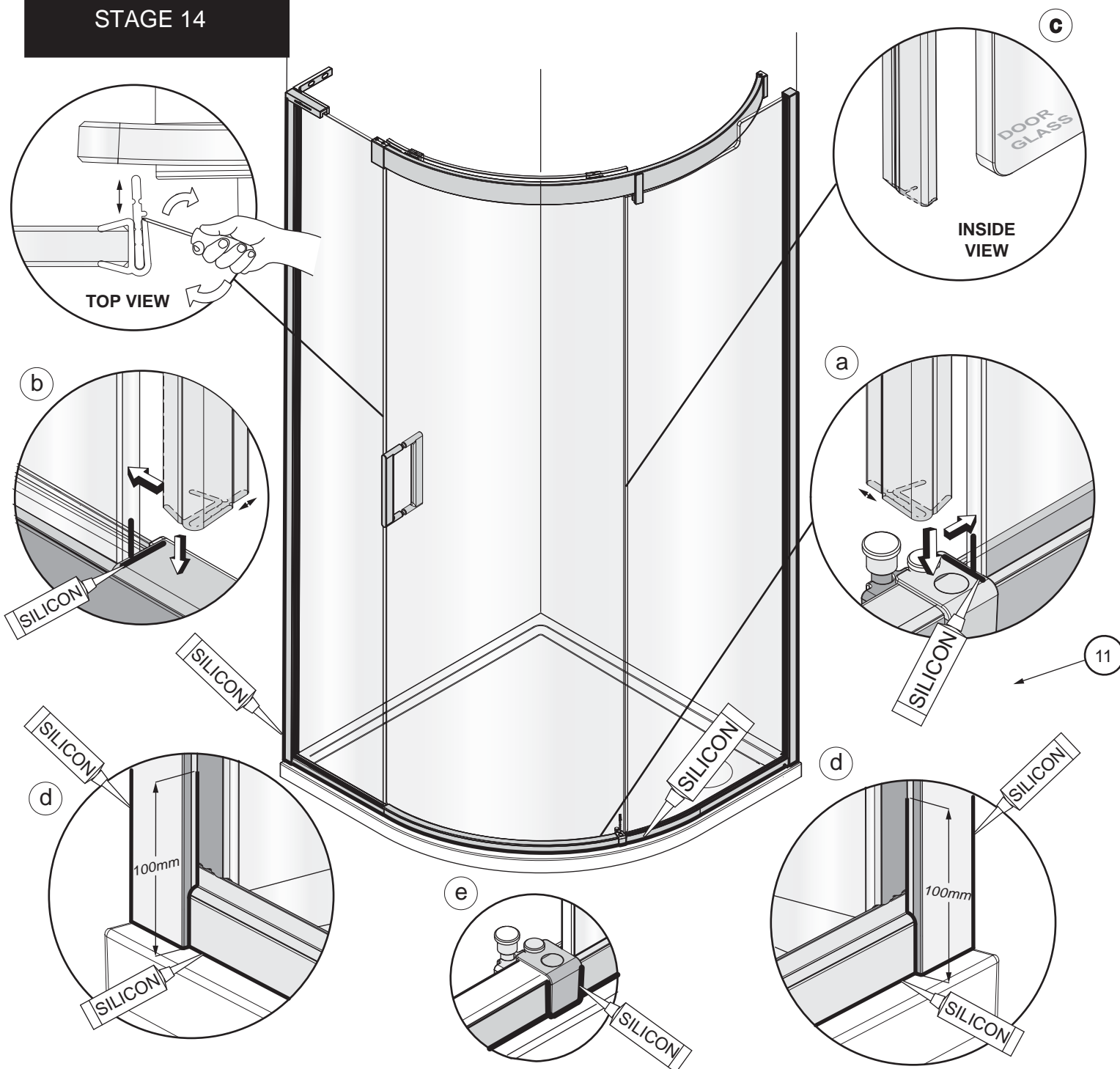
STAGE 13



This stage is describing fitting the Caps and Seals

- a. Fit the wall mount top cap.
- b. Fit the 2 x wall bracket screw covers into the adjustment slots in the side panel wall bracket
- c. Fit the door guide screw cover (supplied in the kit of parts) to the door guide.
- d. Fit adjuster bracket cover with 2 x M4 x 12 screws using 2.5mm allen key

STAGE 14



This stage is describing fitting of the Seals and Silicon

a. Apply a bead of silicon along the top of the door guide. Fit the fixed panel vertical seal (shorter of the 3 seals) to the edge of the fixed panel, ensuring it is pressed firmly against the face of the door guide.

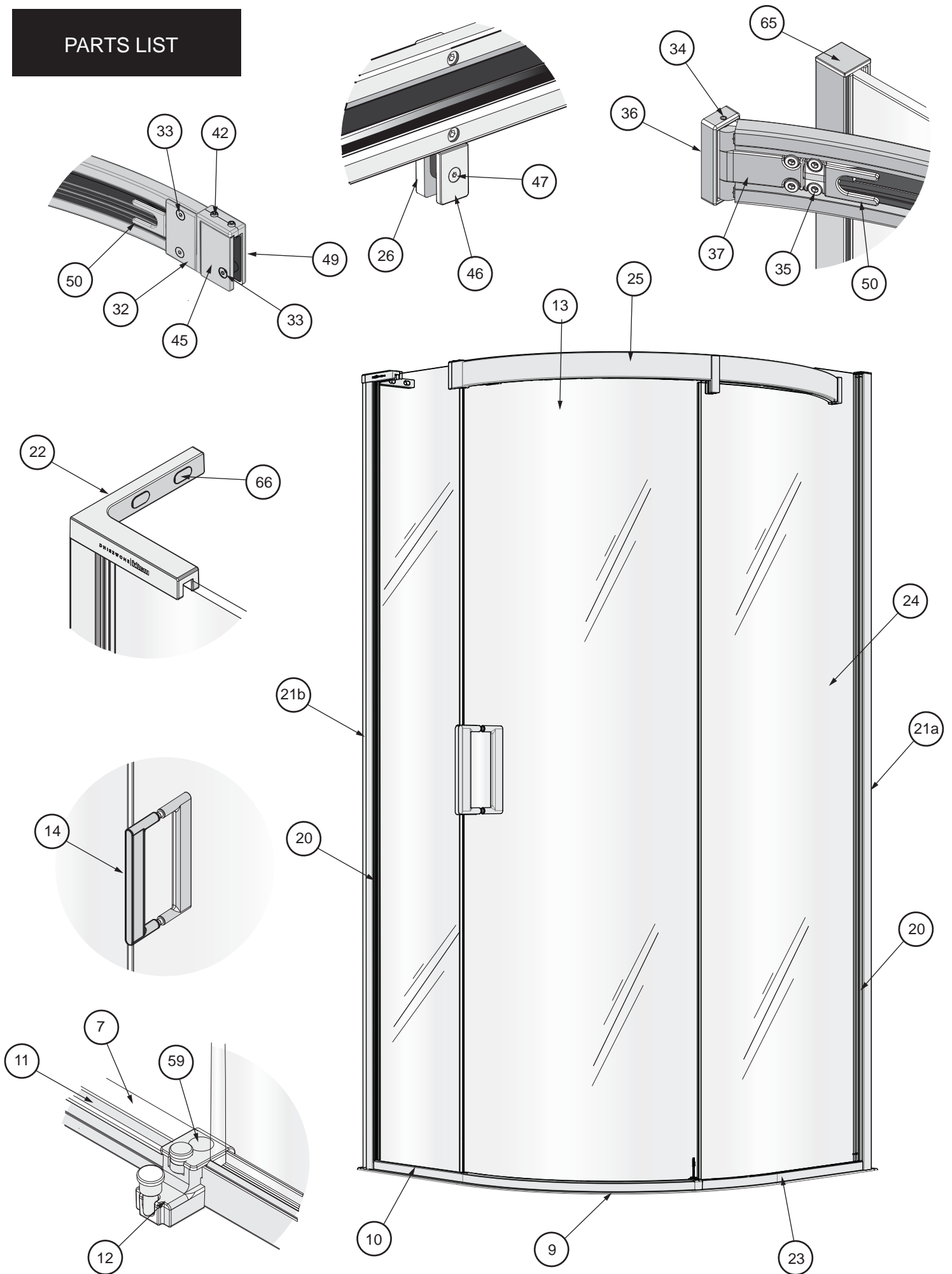
b. Apply a bead of silicon along the top of the threshold cover where it meets the closure panel. Fit the closure panel vertical seal to the edge of the closure panel, ensuring the seal sits firmly down onto the face of the threshold cover.

C. Fit the door vertical seal to the back edge of the door glass, the bottom of the seal should be lined up with the top of the floor horizontal.

d. Apply a thin bead of silicon along the bottom edge of both the wall mounts and all the way up the outside of both the wall mount extrusions between the wall mounts and the tiles. Apply a thin bead all the way along the threshold between the extrusion and the finished floor surface/tray around the corner extrusion and along the bottom of the side panel where it meets the floor/tray. Continue around the joint where the threshold joins the wall mounts and also 100mm up on the outside where the wall mounts and glass meet and where the corner extrusion and glass meet. Apply a bead of silicon on the outside around the joints between the door guide and threshold extrusion (e).

Masking tape can be used to achieve a tidy edge to the sealant. Remove the masking tape immediately and allow the silicon to cure for 24 hours before using the shower.

PARTS LIST



PARTS LIST

SIDE PANEL PACK

ITEM	DESCRIPTION	PART No.	QTY
1	ADJUSTER CLAMP	8427 AF	1
2	BOTTOM WALL CORNER BRACKET	8431 AF	1
3	M5 x 10 CSK SKT	1488 A SILVER	1
4	INSTALLATION DOOR SUPPORT	8599 BLACK	2
5	THRESHOLD END CAP	8409 WHITE	2
6	NO. 8 X 12 CSK POZ S/TAP ST/ST	1442 A SILVER	1
7	CURVED THRESHOLD	9014 SILVER	1
8	SLIDER PANEL	8976 DGG (900) / 8977 DGG (1200) / 8978 DGG (1500)	1
9	PANEL FLOOR HORIZONTAL LH	9006 SILVER (900) / 9007 SILVER (1200) / 9008 SILVER (1500) / 9009 SILVER (2000)	1
10	PANEL GLASS HORIZONTAL	9002 SILVER (900) / 9003 SILVER (1200) / 9004 SILVER (1500) / 9005 SILVER (OVERLNGTH)	1
11	THRESHOLD DOOR GUIDE	1306 AF	1
12	SLIDER GUIDE BLOCK	7386 AF	1

DOOR PACK

13	CURVED DOOR GLASS	8970 GG (LH) / 8971 GG (RH) OR 8973 (LH) / 8972 (RH)	1
14	HANDLE	6185 AF (LINEAR) / 6184 AF (CURVED) / 8632 AF (TRAD) / 6210 A SILVER (SINGLE STRAIGHT)	1
15	475 ROLLER BLOCK 10mm		1

CURVED PANEL PACK

16	SS SEAL SEAT SMALL	6658 BLACK	8
17	M5 x 10 CSK SKT	1488 A SILVER	1
18	Hexagon Socket Button Head Screw	1282 A SILVER	2
19	CURVED CORNER FLOOR RAIL BLOCK	8444 AF	1
20	WALL MOUNT SEAL	2389 CLEAR	2
21a	SS WALL MOUNT	9020 SILVER/NICKEL/GOLD	1
21b	SS WALL MOUNT (STRAIGHT PANEL)	9021 SILVER/NICKEL/GOLD	1
22	UNIVERSAL 'L' BRACKET FIXING	7291 AF	2
23	CURVED FLOOR RAIL	9001 SILVER (RH) / 9000 SILVER (LH)	1
24	CURVED FIXED PANEL RH	8975 GG (LH) / 8974 (RH)	1
25	ADJUSTABLE SEAL FIN	8819 CLEAR	2
26	ADJUSTABLE SEAL CARRIER	9018 CLEAR	2
27	EUSLID FIXED PANEL VERT GASKET (1963mm)	2308 CLEAR	1

TOP TRACK ASSEMBLY

28	CURVED TOP TRACK	9019 SILVER	1
29	FIXED PANEL GLASS CLAMP FRONT	5761 A SILVER	1
30	RUBBER BUMPER LH	8988 BLACK	1
31	CURVED LOWER INFILL	9015 SILVER	1
32	CURVED LOWER INFILL TRACK	9017 AF	1
33	CURVED TOP TRACK INFILL	9016 AF	1
34	RUBBER BUMPER RH	8987 BLACK	1
35	TRACK GLASS JOINT BACK PLATE	8982 SILVER	1
36	M5 x 12 CSK SKT	1417 A SILVER	3
37	Hexagon Socket Set Screw	1502 A SILVER	2
38	WALL BRACKET FIXING	5903 AF	6
39	CURVED WALL BLOCK	8991 SILVER	1
40	WALL SLIDE ADJUSTER	8985 SILVER	1
41	HEADRAIL CLAMP GASKET	8994 AF	1
42	GLASS JOINT WASHER	8993 AF	1
43	HEADRAIL CLAMP GASKET 2	8995 AF	1
44	GLASS CLAMP FIXING LEG	9022 AF	2
45	NRXC/NRXO M6 x 12mm NYLON TIP SKT SET	1189 AF	2
46	TOP TRACK BRACKET FIXINGS	9028 SILVER	2
47	TOP TRACK GLASS JOINT	8981 SILVER (LH) / 8980 SILVER (RH)	1
48	TRACK GLASS JOINT BACK PLATE	8990 SILVER (LH) / 8989 SILVER (RH)	1
49	FIXED PANEL GLASS CLAMP BACK	5762 A SILVER	1
50	CSK SKT SCREW	1404 A SILVER	1
51	FIXED PANEL GLASS BUSH	5763 BLACK	1
52	EAUZ MODIFIED SOCKET SET + ST ST BEARING	8359 AF	2
53	CURVED WALL MOUNT BRACKET END	8984 SILVER	2
54	WALL BRACKET COVER PLATE	8986 SILVER	1
55	M4 x 12 CSK SKT	1517 A SILVER	2
56	MTK1 SMALL ROLLER SUPPORT	4687 AF	2

KIT OF PARTS

57	WALL PLUG	1818 AF	7
58	NO.8-18x32 Pan Self Tapping Screw	1471 A SILVER	6
59	3mm AF BALL END	8622 AF	1
60	2mm ALLEN KEY	1286 AF	1
61	4mm ALLEN KEY	1166 AF	1
62	BRACKET HOLE COVER	8435 A SILVER	1
63	No.8 x 50 CSK Screw	1264 A SILVER	2
64	2.5mm ALLEN KEY	1168 AF	1
65	PIVOT BLOCK ADJSUTER SCREW	8261 AF	1
66	CURVE FLOOR RAIL ADJUSTER	8449 A SILVER	1
67	ADJUSTER CLAMP	8427 AF	1
68	SS 10mm W.MOUNT TOP CAP	6662 A SILVER	1
69	HINGE BRACKET CAP	5579 A SILVER	2
70	SMALL WHITE DAMPER	1339 AF	2

MAINTENANCE

Matki Glass Guard Easy Clean Surface Protection (optional) and General Cleaning Guide

Cleaning Instructions

Matki Glass Guard allows water to form minute beads which easily trickle off the surface of the glass. This makes the glass easier to clean - the glass does not need to be cleaned as frequently, but it does require occasional maintenance. As less cleaning is required the use of detergents can be minimised thus helping to protect the environment. The lifespan of the Matki Glass Guard is dependant on the frequency of use of the shower and the degree of water hardness.

The combination of alkaline materials and humidity affects glass in an extremely aggressive way. Do not use bleach, alkaline, acid-based or aggressive and abrasive glass cleaners, detergents or household cleaning products on the glass or frames.

We recommend that glass is washed down with clean water and a soft clean cloth or sponge and dried off with a microfibre cloth.

The special coating is only present on the inside of the glass.

Matki Glass Guard is guaranteed for 2 years provided that the guidelines and cleaning instructions are followed.

Aluminium and Chrome parts should be cleaned with a mild non scratch household cleaner and a soft cloth or sponge.

Do not use acidic-based descaler products or products which are unsuitable for cleaning enamelled surfaces, including abrasive cleaners or cleaners containing bleach or solvents, as the products will effect the anodised framework. Under no circumstances use cleaners with a pH level exceeding 8.

Matki does not recommend the use of 'Leave-on' shower cleaners on Matki Glass Guard Products.

Water Softeners and Glass Guard - Certain types of water softeners increase the alkalinity of the water due to a carry-over of Chloride during re-generation which can cause aggressive water spots on both untreated and Glass Guarded glass. If using a water softener we recommend a two-cylinder machine with automatic re-generation instead of a timer. If a single-cylinder water softener with timer is already installed it is recommended that after each shower excess water is removed from the glass with a squeegee or with a micro-fibre cloth.

Annual recommended maintenance - Matki recommend annually lubricating the barrel of the hinge with a lubricating spray such as WD-40 to remove dust build-up and to aid the movement of the hinge.



Wash down with clean warm water and a soft clean cloth or sponge.



Do not use bleach, alkaline or acid-based, aggressive or abrasive cleaning products.

Flash Bathroom Spray or Cif Bathroom Spray can be used on Matki Products.
Read manufacturers label before using any cleaning materials.

IMPORTANT

Matki Glass Guard is guaranteed for 2 years. It is essential that the cleaning instructions are followed in order to maintain the hydrophobic properties of the glass coating. In the event of the failure to comply in any way with these instructions, any warranty or guarantee will be null and void.

MATKI PLC, CHURCHWARD ROAD, YATE, BRISTOL, BS37 5PL
TELEPHONE:01454 328816 (AFTER SALES) FAX:01454 328821 EMAIL: techsupport@matki.co.uk



matki | SHOWERING

13

Matki PLC, Churchward Road, Yate,
Bristol BS37 5PL

EN 14428:2008+A1