

matki

INSTALLATION

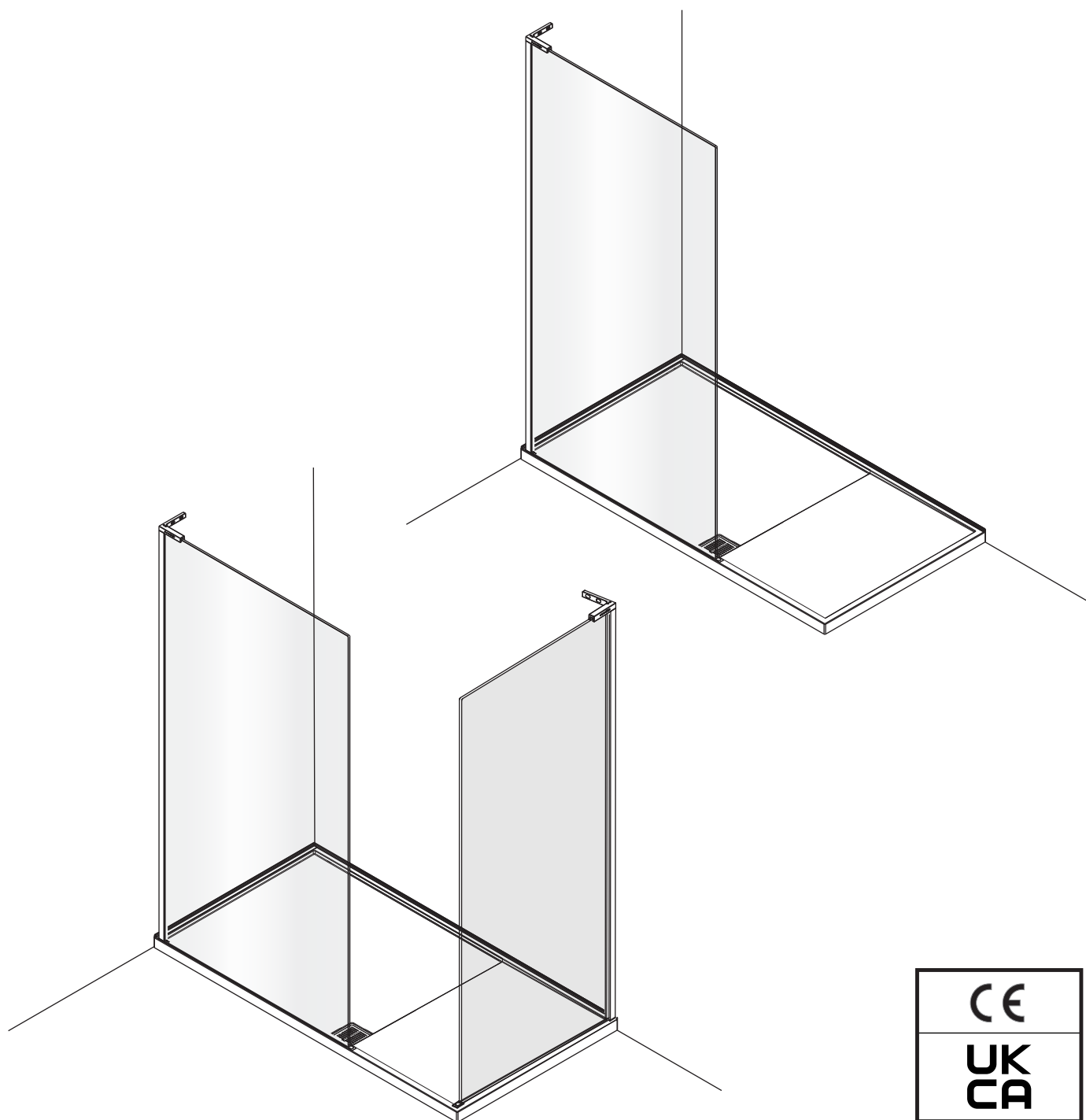
PARTS LIST

PLEASE PASS THE
GUARANTEE CARD ON
TO THE CUSTOMER

BOUTIQUE

NWPR - SINGLE PANEL WITH INTEGRATED TRAY

NWPC - PANEL AND SIDE PANEL WITH INTEGRATED TRAY



MATKI PLC, CHURCHWARD ROAD, YATE, BRISTOL, BS37 5PL
TELEPHONE: 01454 322888 (CUSTOMER SERVICES) EMAIL: techsupport@matki.co.uk

CE

UK
CA

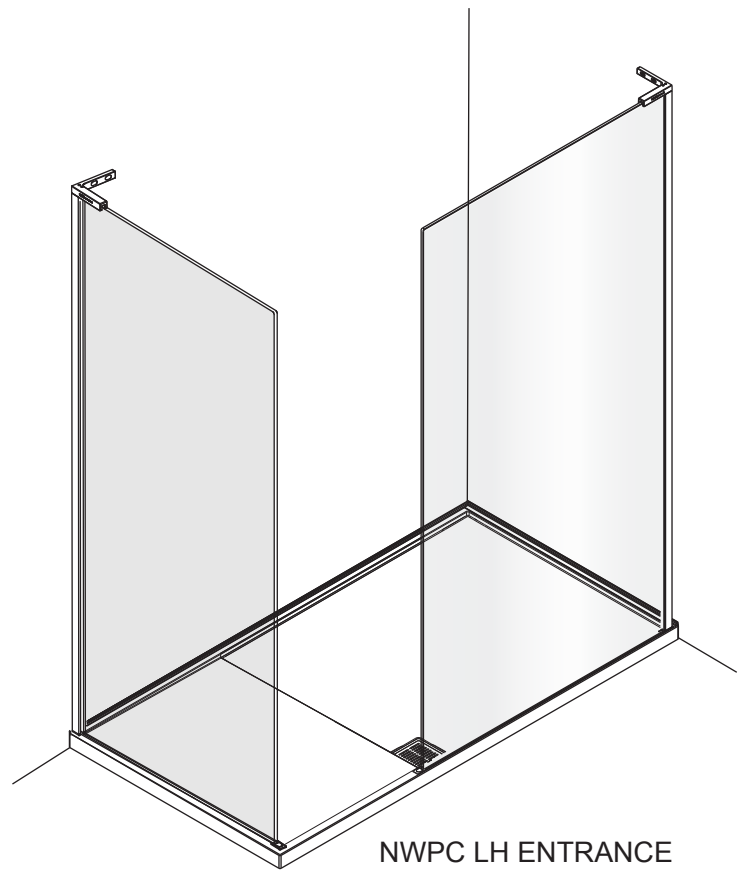
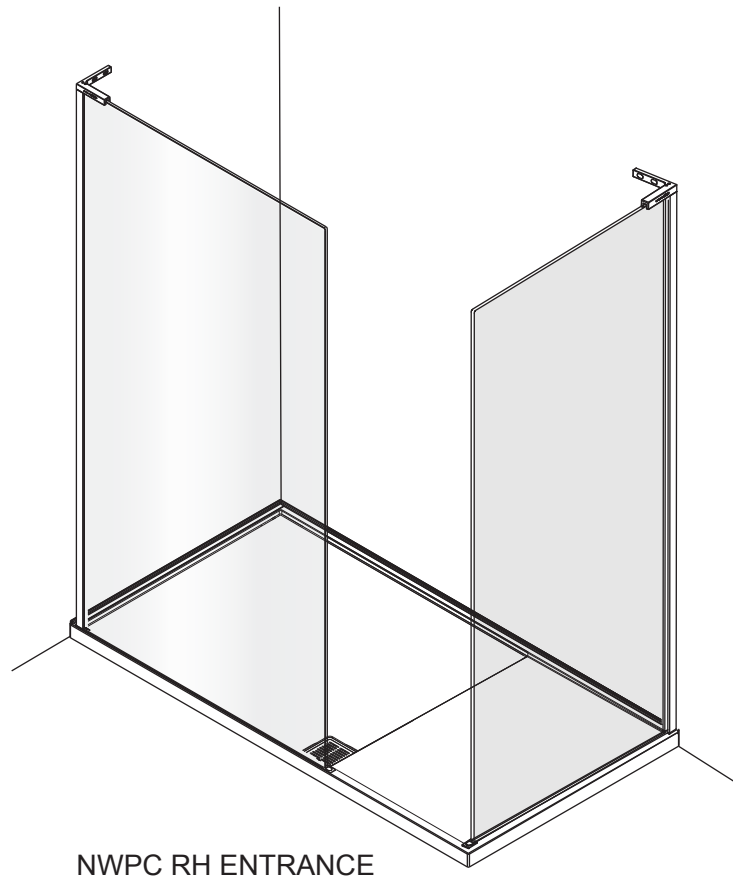
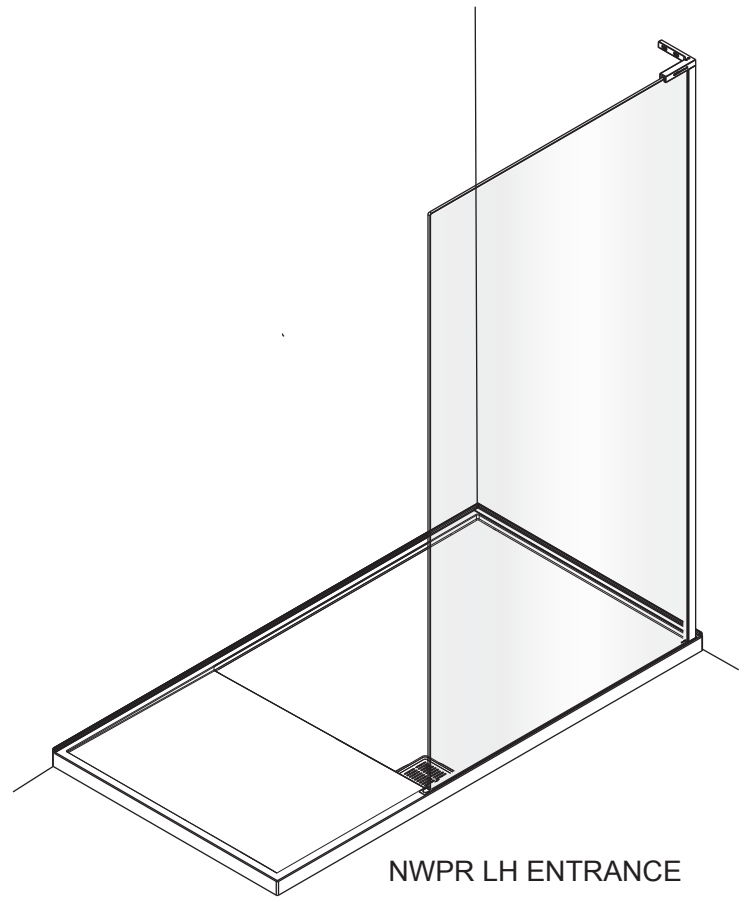
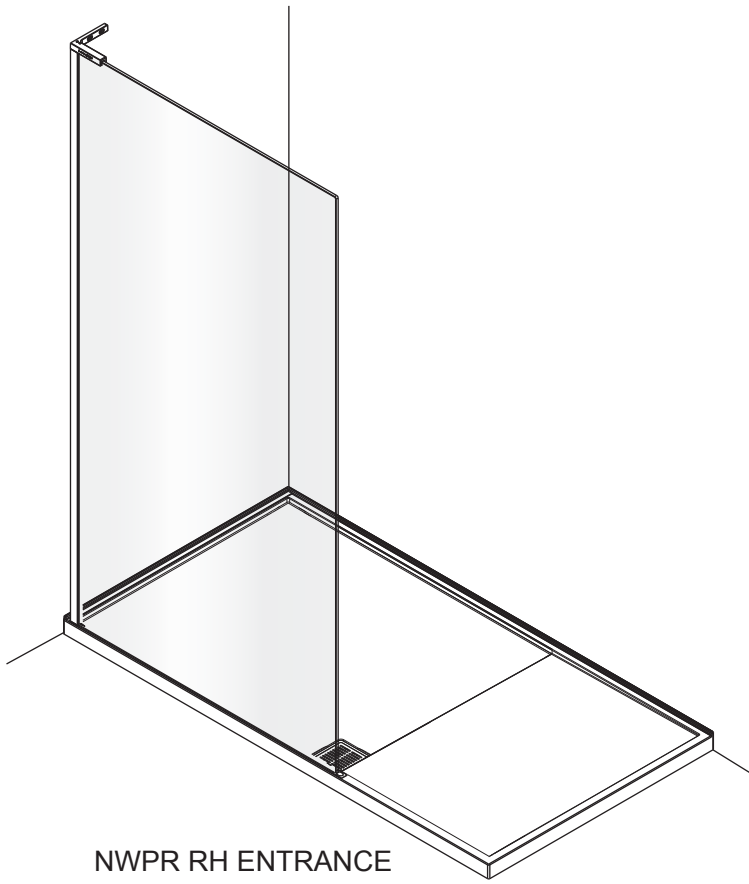
matki

Matki PLC, Churchward Road, Yate,
Bristol BS37 5PL

BS EN 14428:2015+A1:2018

0996 AF 09/21

Matki recommend that this product is fitted by professional installers



THE STAGES IN THIS BOOKLET SHOW AN LH INSTALLATION, REVERSE FOR RH

IMPORTANT

TOOLS REQUIRED

Masonry Drill bit 6mm, Tape Measure, Screw Drivers, Safety Glasses, Allen Keys, Electric Drill, Level, Pencil, Adjustable Spanners, Non Slip Gloves

Before disposing of carton and/or commencing assembly, please check all the parts to ascertain that none are missing and they are all undamaged. No claim for missing/damaged parts will be accepted once the packing carton has been disposed of and/or assembly has commenced.

In case of query contact your Stockist with details of model number and details of serial number.

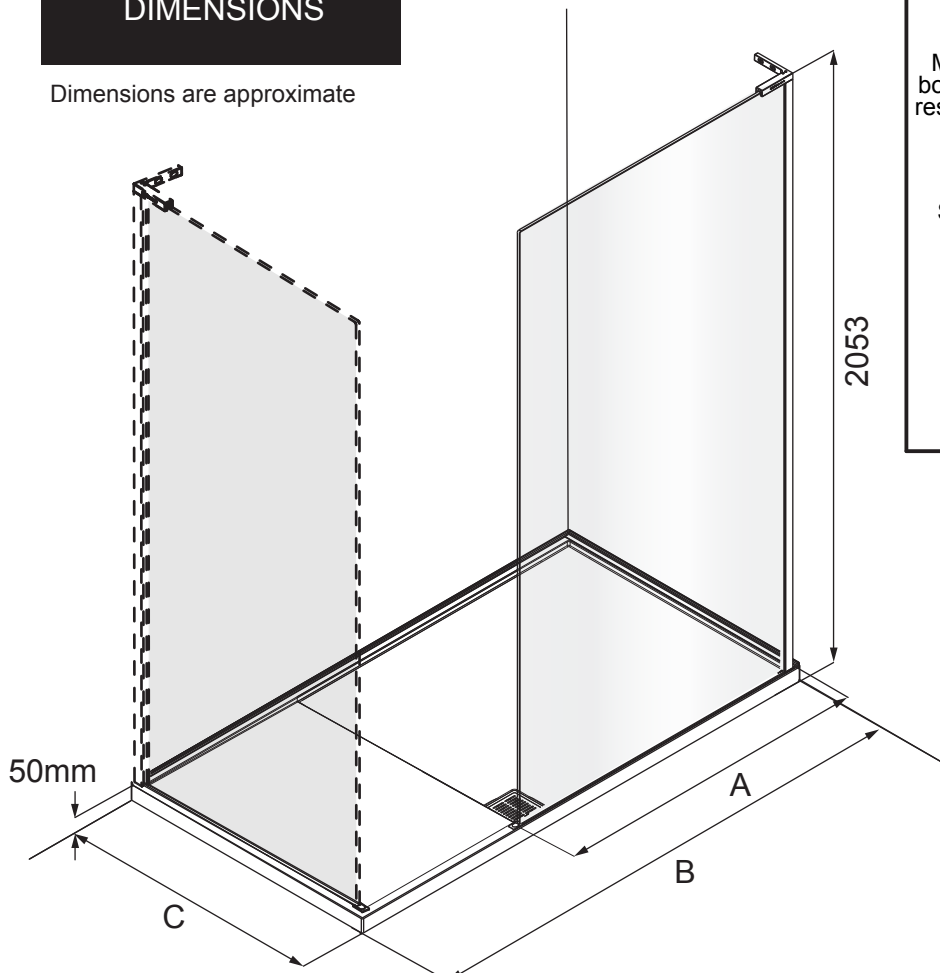
PREPARATION IMPORTANT

1. Please read complete installation instructions before fitting for enclosure and tray (if fitting).
2. We recommend that two people are available for fitting of Wetroom Panel, Stage 2. The **NWPC** is **10mm Glass** construction. Large glass panels are very heavy. We recommend the use of safety glasses and non slip gloves when handling the glass panels.
3. Ensure that the product can be **fixed** to a **solid masonry wall** or suitable **timber stud work grade C16/C24** in the area behind the wall frames and panel fixing brackets.
4. Shower trays or tiled floors **must be absolutely level** where they are fitted
5. We recommend a **drainage test** is carried out before the tray is tiled in position.
6. The assembly should be installed onto a waterproof wall covering and installed after the tray and wall coverings are in place. Trays with tiling lips should be let into the wall with the tiling lip flush with the wall to allow the tiling to overlap the tiling lip.
7. Seal between tray and tiles. Remove any excess sealant from the area/joint between the tray and the tiles where the wall mount is to be fitted. This will ensure the wall mount fits correctly to the wall and tray/or tiled floor.

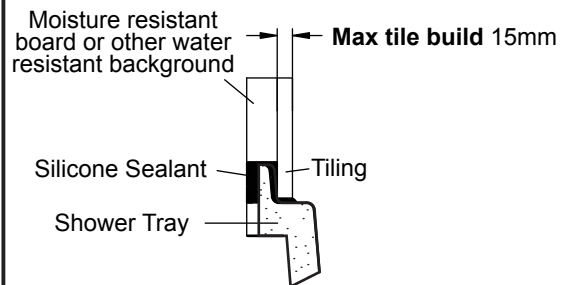
CAUTION: TEMPERED GLASS CANNOT BE CUT, POLISHED METAL AND CHROME CAN BE SCRATCHED. CAREFULLY REMOVE ASSEMBLY FROM CARTON, DO NOT PLACE GLASS ON HARD FLOOR OR EXPOSE EDGES TO IMPACT.

DIMENSIONS

Dimensions are approximate

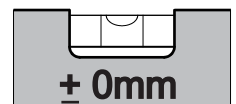


TYPICAL INSTALLATION OF SHOWER TRAY



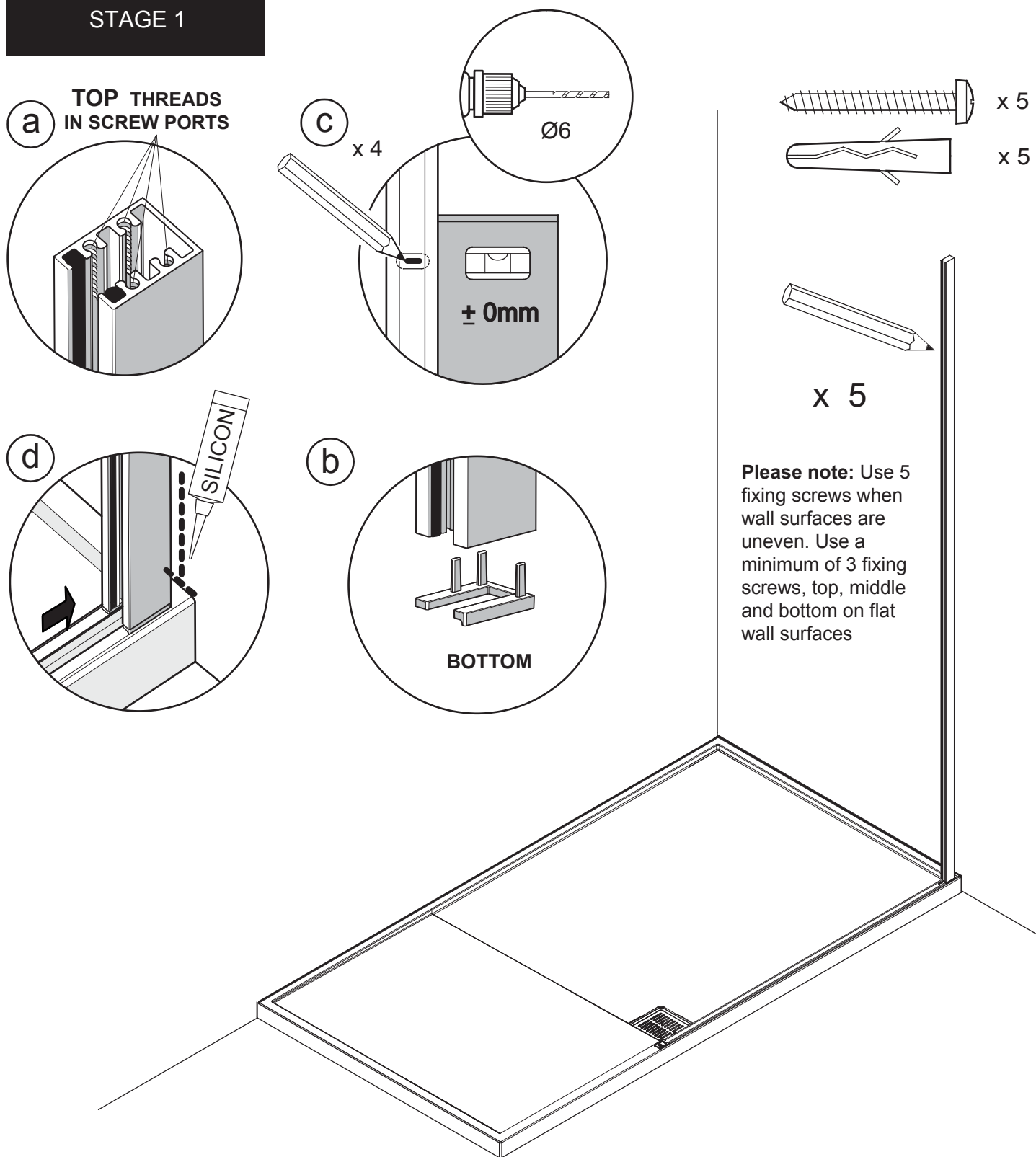
Alternatively bottom of wall may be cut back to allow tiling lip to be flush with wall.

TRAY MUST BE LEVEL
IN ALL PLANES



	A	B x C
MODEL 1580	905 - 920	1500 - 800
MODEL 1590	905 - 920	1500 - 900
MODEL 1780	1055 - 1070	1700 - 800
MODEL 1790	1055 - 1070	1700 - 900

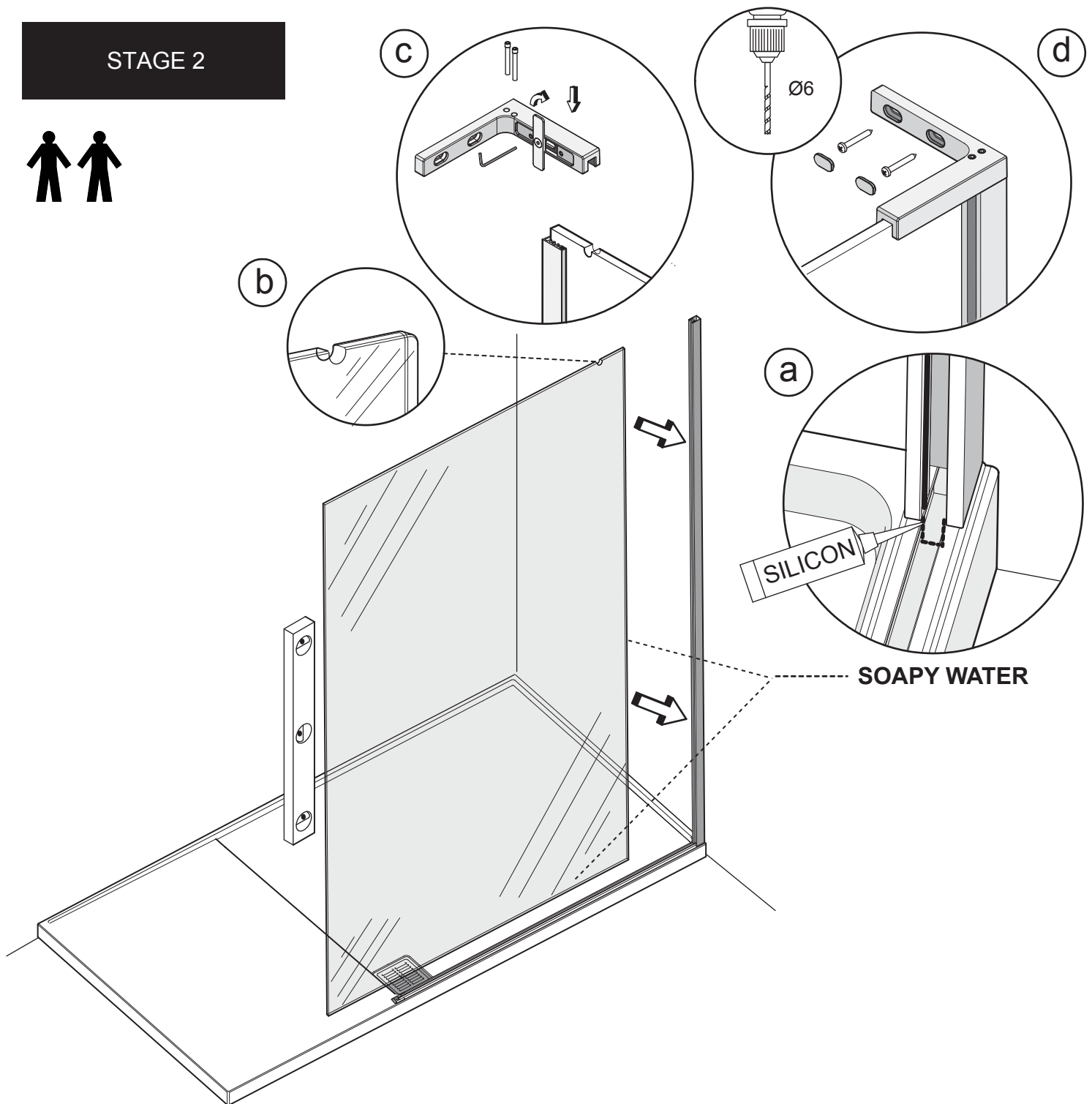
STAGE 1



This stage is describing the fitting of the Front panel wall mount.

- The Wall mount has a top and bottom, the top has the threaded holes for the fitting of the top wall bracket.
- Before placing the wall mount fit the bottom cap with the thicker edge on the outside. Place the wall mount onto the top of the tray glass gasket. Align the opening in the wall mount with the opening in the tray glass gasket.
- Plumb the wall mount for upright and mark the fixing holes in the centre of the slots.
- Drill 5 x fixing holes in the wall and insert the wall plugs. Clean area and apply silicon sealant to the area behind the wall mount between the tray and tiles and 100mm up the wall, central to the width of the wall mount. Secure the wall mount using the No.8 x 32mm pan head screws, plumb the wall mount for upright do not overtighten the screws to allow for adjustment.

STAGE 2



**This stage is describing the fitting of the Front panel glass.
We recommend two people are available for this stage.**

a. Before fitting the glass panel apply a small 'U' shaped bead of silicon in the base and sides of the tray gasket at the opening of the wall mount.

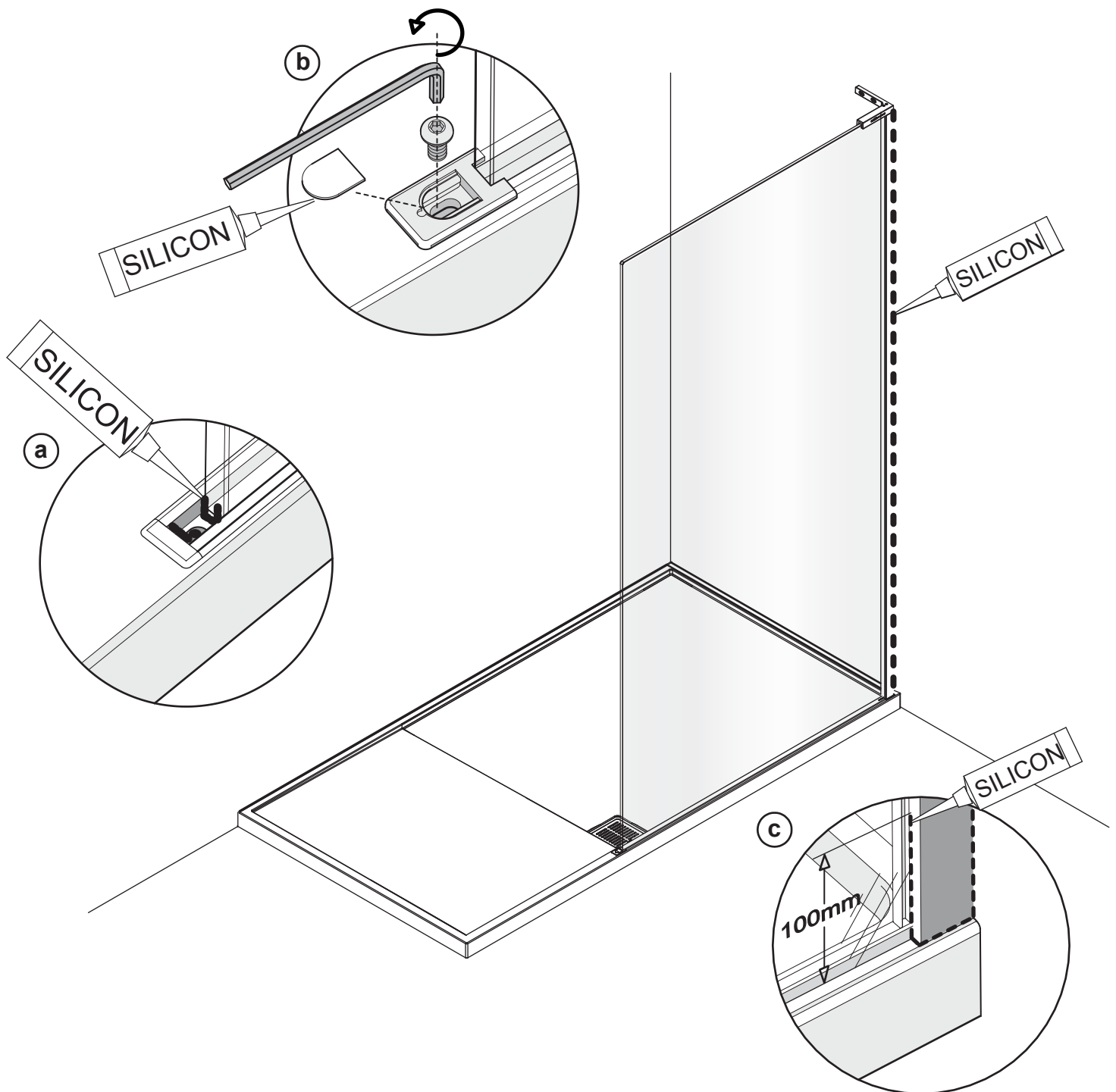
IMPORTANT: Fit the front panel with the cut out in the top of the glass panel nearest the wall **(b)**. Lightly wet the vertical and bottom horizontal edge of the glass panel with soapy water and gently lower the panel into the wall mount and tray gasket. Push the top of the panel into the wall mount first, followed by the bottom.

c. Fitting of entrance side panel top bracket: Loosen the countersunk socket screw in the top bracket back plate until the back plate can be rotated. Rotate the back plate 180° to vertical. The plate should now adjust left to right, moving the glass stop and glass gasket with it. Carefully fit the top bracket over the glass panel, the glass stop should fit into the notch in the top of the glass panel.

d. Mark the centre of the slotted holes in the top bracket onto the wall, remove the top bracket and drill and fix the wall plugs. Re fit the top bracket. Fit the 2 x Socket cap screws through the top bracket into the extrusion. Tighten the 2 off M5 x 4 Socket set screws (do not over tighten). Rotate the back plate to fit into the top bracket recess and re fit the countersunk socket screw (do not over tighten). Fix the top bracket to the wall using the No.8 x 32 Pan Head screws and fit the bracket screw cover caps.

STAGE 3

NWPR IS NOW COMPLETE
CONTINUE FOR NWPC

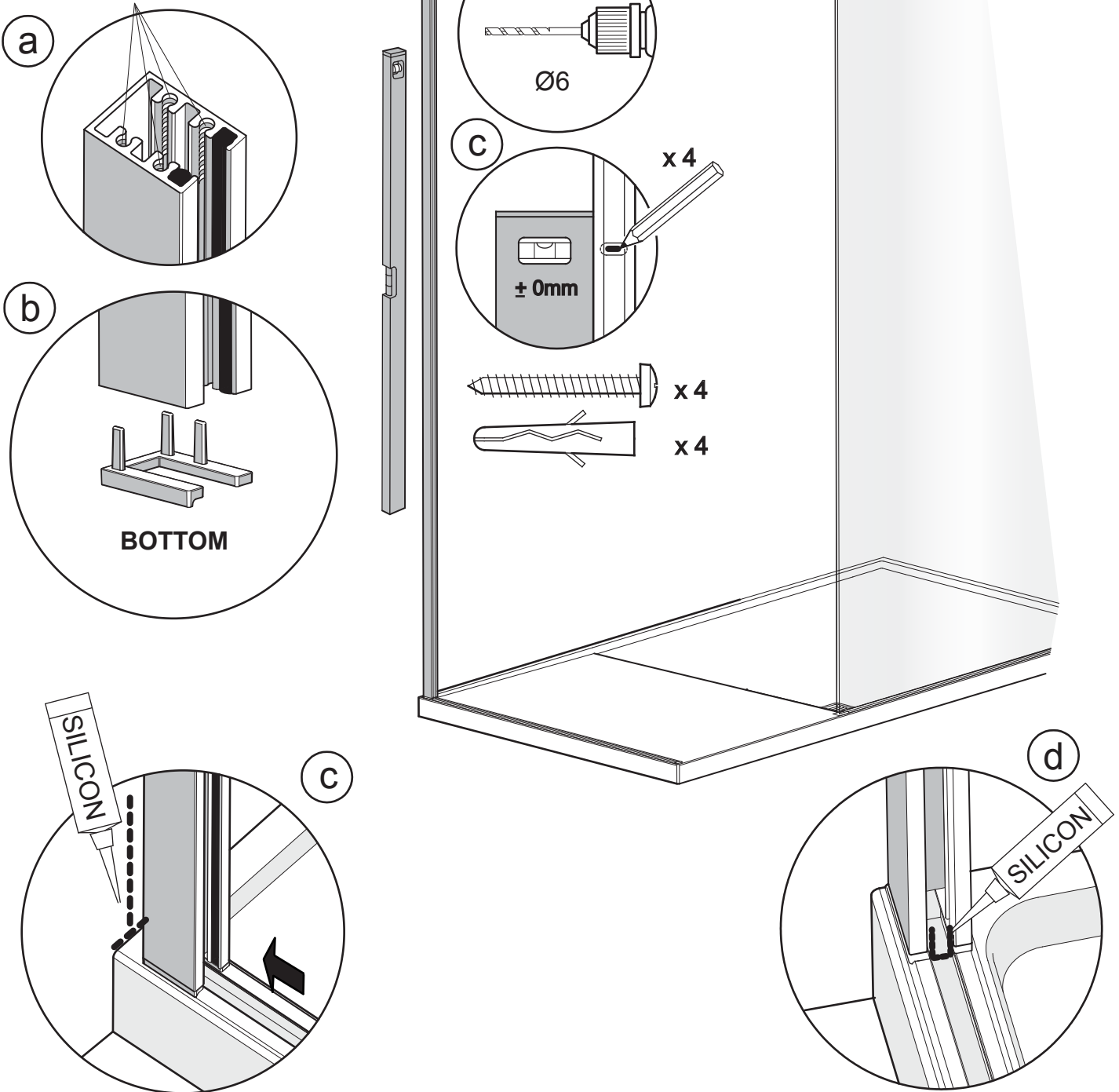


This stage is describing the silencing of the panel and end caps.

- a.** Apply a 'U' shaped bead of silicon sealant in the base and sides of the tray gasket at the end of the glass panel and end of the gasket.
- b.** Fit the NWPR panel cap into the tray gasket and secure with the M6 button head screw, place a small spot of silicon sealant under the screw cover and fit.
- c.** Apply a thin bead of silicon along the bottom edge of both the wall mounts where they meet the tray and 100mm up the joint between the glass panel and wall mount. Apply silicon all the way up the outside of the wall mount extrusion between the wall mount and the tiles. Masking tape can be used to achieve a tidy edge to the sealant. Remove the masking tape immediately and allow the silicon to cure for 24 - 48 hours before using the shower.

STAGE 4

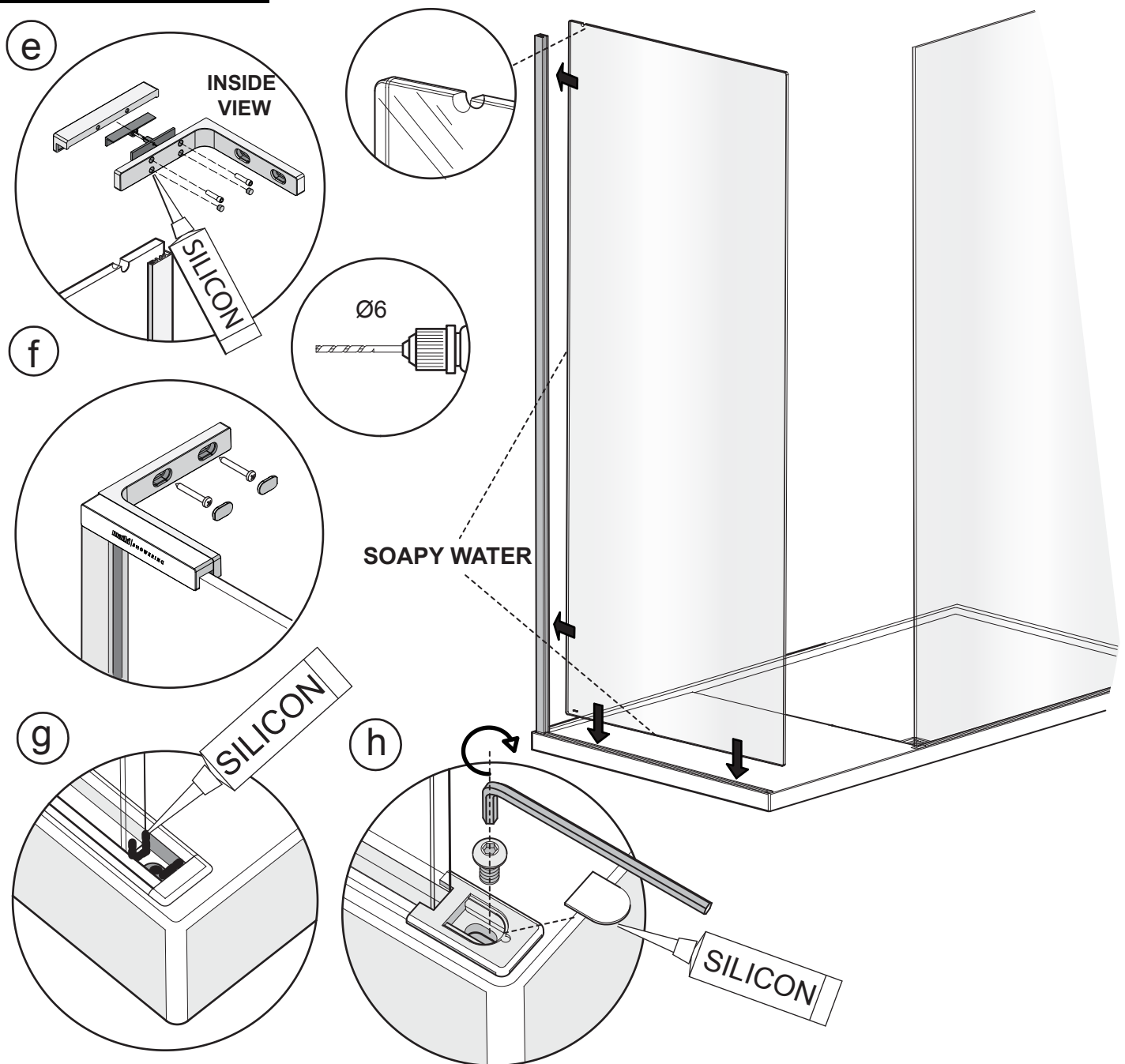
ENTRANCE SIDE PANEL TOP THREADS IN SCREW PORTS



This stage is describing the fitting of the Entrance Side panel wall mount.

- The Wall mount has a top and bottom, the top has the threaded holes for the fitting of the top wall bracket.
- Before placing the wall mount fit the bottom cap with the thicker edge on the outside. Place the wall mount onto the top of the tray glass gasket. Align the opening in the wall mount with the opening in the tray glass gasket.
- Plumb the wall mount for upright and mark the fixing holes in the centre of the slots. Drill 4 x fixing holes in the wall and insert the wall plugs. Clean area and apply silicon sealant to the area behind the wall mount between the tray and tiles and 100mm up the wall, central to the width of the wall mount. Secure the wall mount using the No.8 x 32mm pan head screws, plumb the wall mount for upright do not overtighten the screws to allow for adjustment.
- Before fitting the Entrance Side panel glass apply a small 'U' shaped bead of silicon in the base and sides of the tray gasket at the opening of the wall mount.

STAGE 4

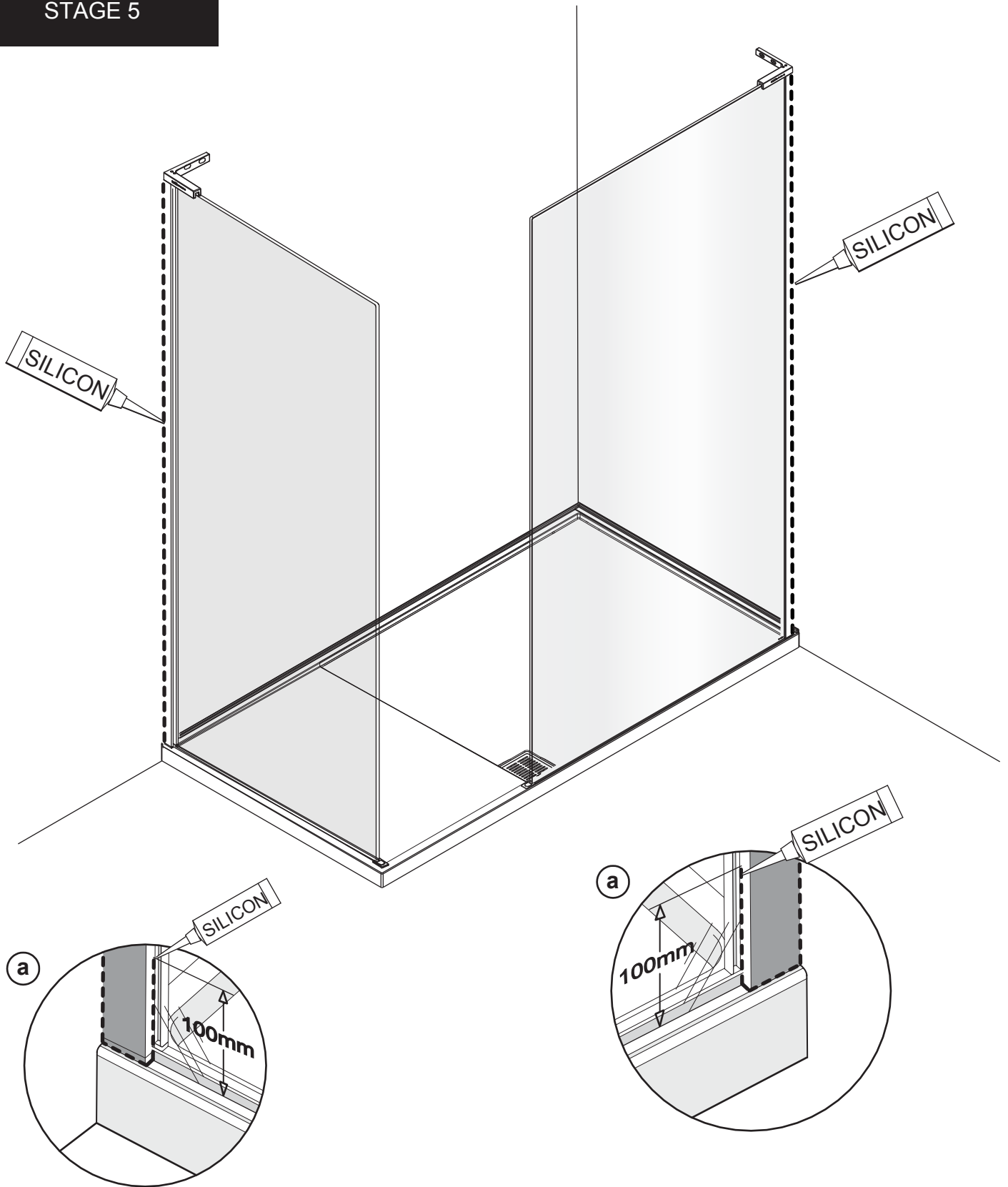


This stage is describing the fitting of the Entrance Side Panel.

IMPORTANT - Before fitting the entrance side panel, lightly wet the vertical and horizontal edges of the glass panel with soapy water and gently lower the panel into the wall mount and tray gasket. Push the top of the panel into the wall mount first, followed by the bottom.

- e.** Fit the two piece hard plastic 'u' shaped gasket into the cut out in the top edge of the glass with the grooved face of the gasket facing outwards. Fit the wall bracket over the glass and onto the top of the wall mount. d. Mark the centre of the slotted holes in the wall bracket onto the wall, remove the wall bracket and drill and fix the wall plugs. Refit the wall bracket. Clamp the bracket to the glass by tightening the clamping screws on the inside of the bracket. Fit the clamping screw cover caps into the two unused holes on the inside of the wall bracket. Apply a small spot of silicon in the holes before fitting the caps.
- f.** Fix the bracket to the wall using the No.8 x 50 pan head screws and fit the bracket screw cover caps.
- g.** Apply a 'U' shaped bead of silicon sealant in the base and sides of the tray gasket at the end of the glass panel and end of the gasket.
- h.** Fit the Entrance side panel cap into the tray gasket and secure with the M6 button head screw, place a small spot of silicon sealant under the screw cover and fit.

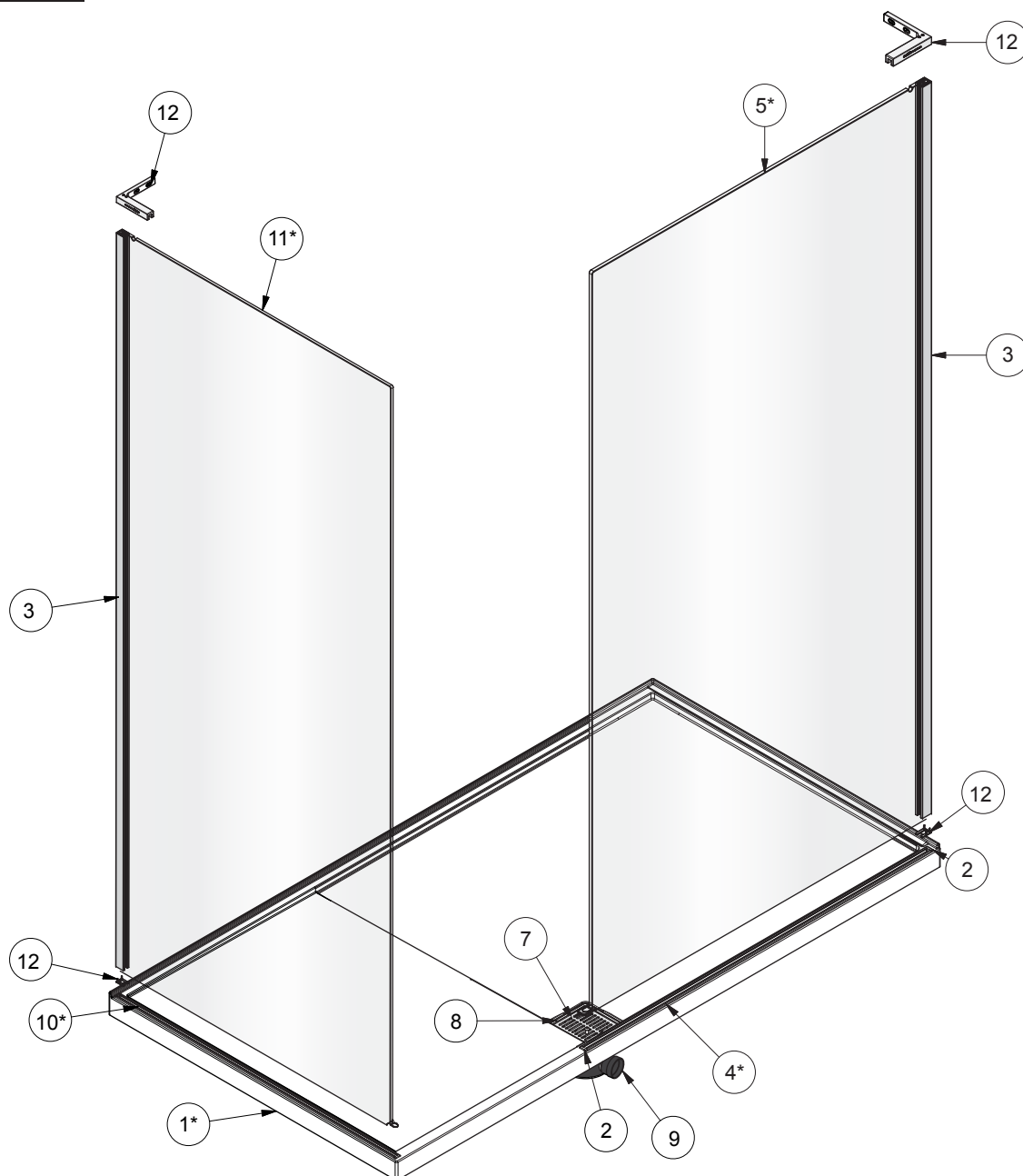
STAGE 5



This stage is describing the siliconing of the panel and end caps.

a. Apply a thin bead of silicon along the bottom edge of both the wall mounts where they meet the tray and 100mm up the joint between the glass panel and wall mount. Apply silicon all the way up the outside of the wall mount extrusion between the wall mount and the tiles. Masking tape can be used to achieve a tidy edge to the sealant. Remove the masking tape immediately and allow the silicon to cure for 24 - 48 hours before using the shower.

PARTS LIST



We recommend that these instructions are handed to the user with a note of a date of purchase and model details.
To order replacements quote: Part Descriptions, Model, Part Number and Colour.

PARTS LIST

* ITEM VARIES DEPENDING ON MODEL

PARTS LIST						
ITEM	DESCRIPTION	PART No.	QTY	LENGTH	NWPR	NWPC
1*	1790 RH ENTRANCE	NWPR/NWPC 1700 x 900 RH	1		✓	✓
1*	1790 LH ENTRANCE	NWPR/NWPC 1700 x 900 LH	1		✓	✓
1*	1780 RH ENTRANCE	NWPR/NWPC 1700 x 800 RH	1		✓	✓
1*	1780 LH ENTRANCE	NWPR/NWPC 1700 x 800 LH	1		✓	✓
1*	1590 RH ENTRANCE	NWPR/NWPC 1500 x 900 RH	1		✓	✓
1*	1590 LH ENTRANCE	NWPR/NWPC 1500 x 900 LH	1		✓	✓
1*	1580 RH ENTRANCE	NWPR/NWPC 1500 x 800 RH	1		✓	✓
1*	1580 LH ENTRANCE	NWPR/NWPC 1500 x 800 LH	1		✓	✓
2	TRAY GASKET END CAP	5888 WHITE	2		✓	✓
3	WALK-IN END PANEL MOUNT	5794 A SILVER	2		✓	✓
4*	FRONT PANEL TRAY GASKET (1700)	2345 WHITE	1	1075mm	✓	✓
4*	FRONT PANEL TRAY GASKET (1500)	2344 WHITE	1	925mm	✓	✓
5*	WALK-IN FRONT PANEL (1700)	8066 M CLEAR/PLAIN	1	1049mm	✓	✓
5*	WALK-IN FRONT PANEL (1500)	8065 M CLEAR/PLAIN	1	899mm	✓	✓
7	SQUARE TRAY GRILL	7491 A SILVER	1		✓	✓
8	SQAURE WASTE FLANGE	5861 A SIVLER	1		✓	✓
9	FASTFLOW WASTE 70mm WITH FLANGE	RR0000402	1		✓	✓
10*	SIDE PANEL TRAY GASKET (800)	2325 WHITE	1	759mm		✓
10*	SIDE PANEL TRAY GASKET (900)	2326 WHITE	1	859mm		✓
11*	WALK-IN SIDE PANEL (800)	7979 M CLEAR/PLAIN	1	2000x 740mm		✓
11*	WALK-IN SIDE PANEL (900)	7978 M CLEAR/PLAIN	1	2000x 840mm		✓
12	UNIVERSAL BRACKET KIT OF PARTS	7297 AF	2			✓

