

matki

BOUTIQUE WALK-IN WITH TRAY

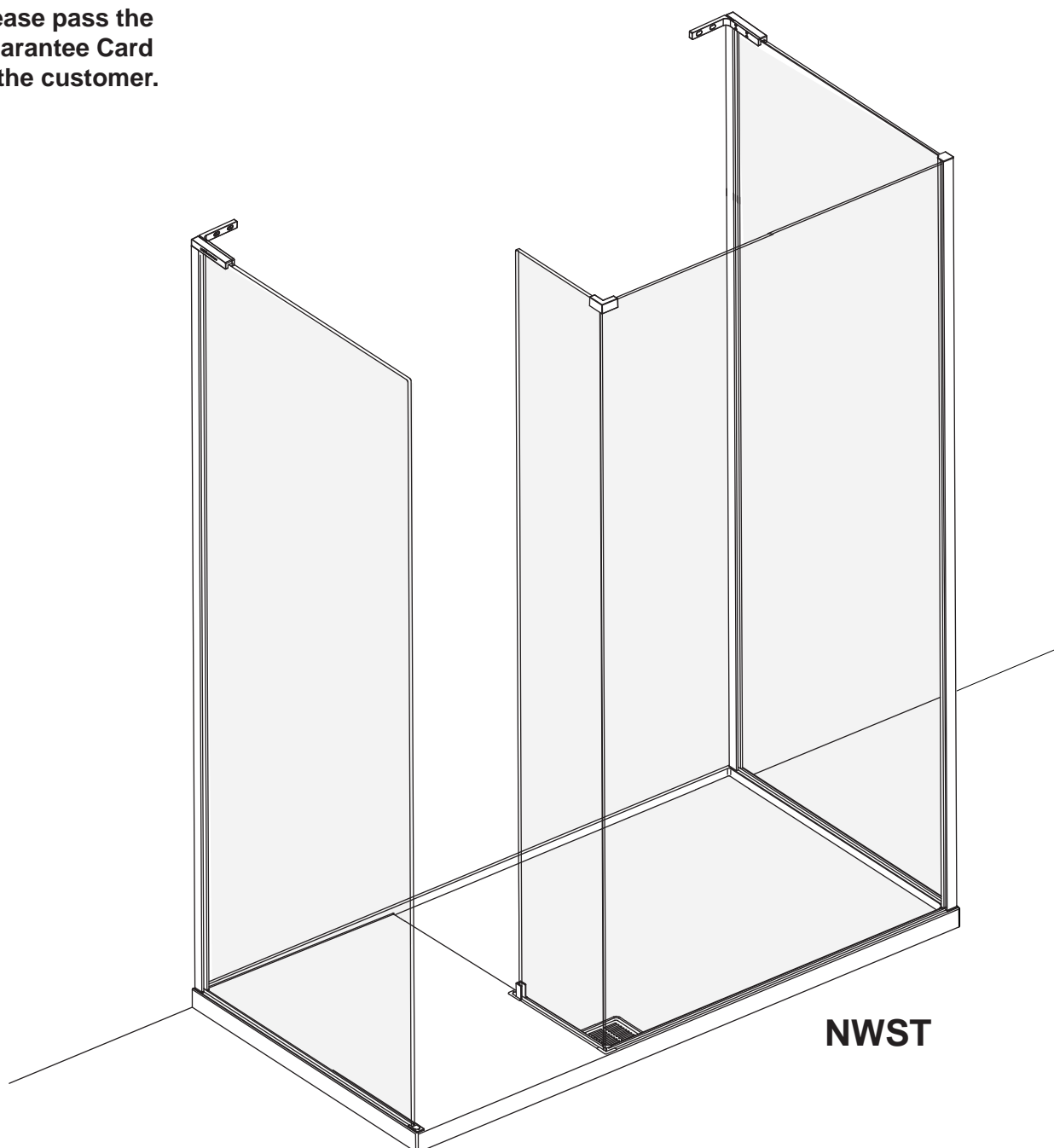
INSTALLATION

PARTS LIST

MODELS WITH TRAY ONLY:

NWSC, NWSR, NWSF, NWCC, NWST

Please pass the
Guarantee Card
to the customer.



NWST



MATKI PLC, CHURCHWARD ROAD, YATE, BRISTOL BS37 5PL
TELEPHONE: 01454 322 888 (CUSTOMER SERVICES) EMAIL: techsupport@matki.co.uk

0934 AF 06/21

IMPORTANT

TOOLS REQRED

Masonry Drill bit 6mm, Tape Measure, Screw Drivers, Safety Glasses, Allen Keys, Electric Drill, Level, Pencil, Adjustable Spanners, Non Slip Gloves

Before disposing of carton and/or commencing assembly, please check all the parts to ascertain that none are missing and they are all undamaged. No claim for missing/damaged parts will be accepted once the packing carton has been disposed of and/or assembly has commenced. In case of query contact your Stockist with details of model number and details of serial number.

PREPARATION IMPORTANT

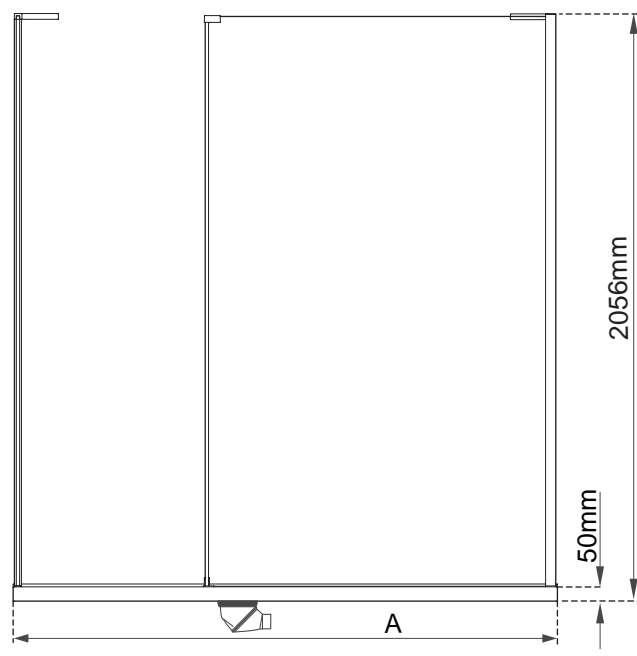
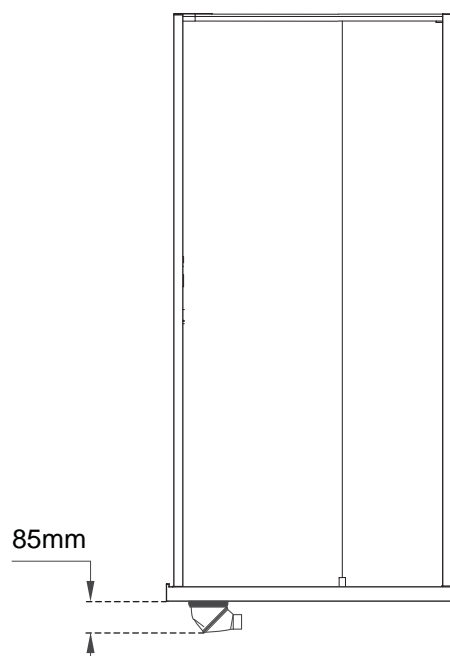
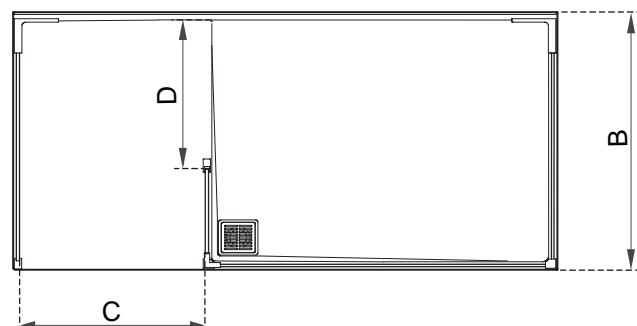
1. Please read complete installation instructions before fitting the enclosure and tray (if fitting).
2. We recommend that two people are available for fitting of the glass panels.
The **Boutique Walk-in** range is **8 and 10mm Glass** construction. Large glass panels are very heavy. We recommend the use of safety glasses and non slip gloves when handling the glass panels.
3. Ensure that the product can be **fixed** to a **solid masonry wall** or suitable **timber stud work grade C16/C24** in the area behind the wall frames and panel fixing brackets.
4. Shower trays or tiled floors **must be absolutely level** where enclosures are fitted.
5. If fitting a tray we recommend a **drainage test** is carried out before the tray is tiled in position.
6. The assembly should be installed onto a waterproof wall covering and installed after the tray and wall coverings are in place.
Trays with tiling lips should be let into the wall with the tiling lip flush with the wall to allow the tiling to overlap the tiling lip.
7. Seal between tray and tiles. Remove any excess sealant from the area/joint between the tray and the tiles where the wall mount is to be fitted. This will ensure the wall mount fits correctly to the wall and tray/or tiled floor.

CAUTION: TEMPERED GLASS CANNOT BE CUT, POLISHED METAL AND CHROME CAN BE SCRATCHED. CAREFULLY REMOVE ASSEMBLY FROM CARTON, DO NOT PLACE GLASS ON HARD FLOOR OR EXPOSE EDGES TO IMPACT.

DIMENSIONS

Dimensions are approximate
Model shown NWST 1790LH

	A	B	C	D
MODEL 1580	1500mm	800mm	530mm	530mm
MODEL 1590	1500mm	900mm	530mm	530mm
MODEL 1780	1700mm	800mm	580mm	530mm
MODEL 1790	1700mm	900mm	580mm	530mm

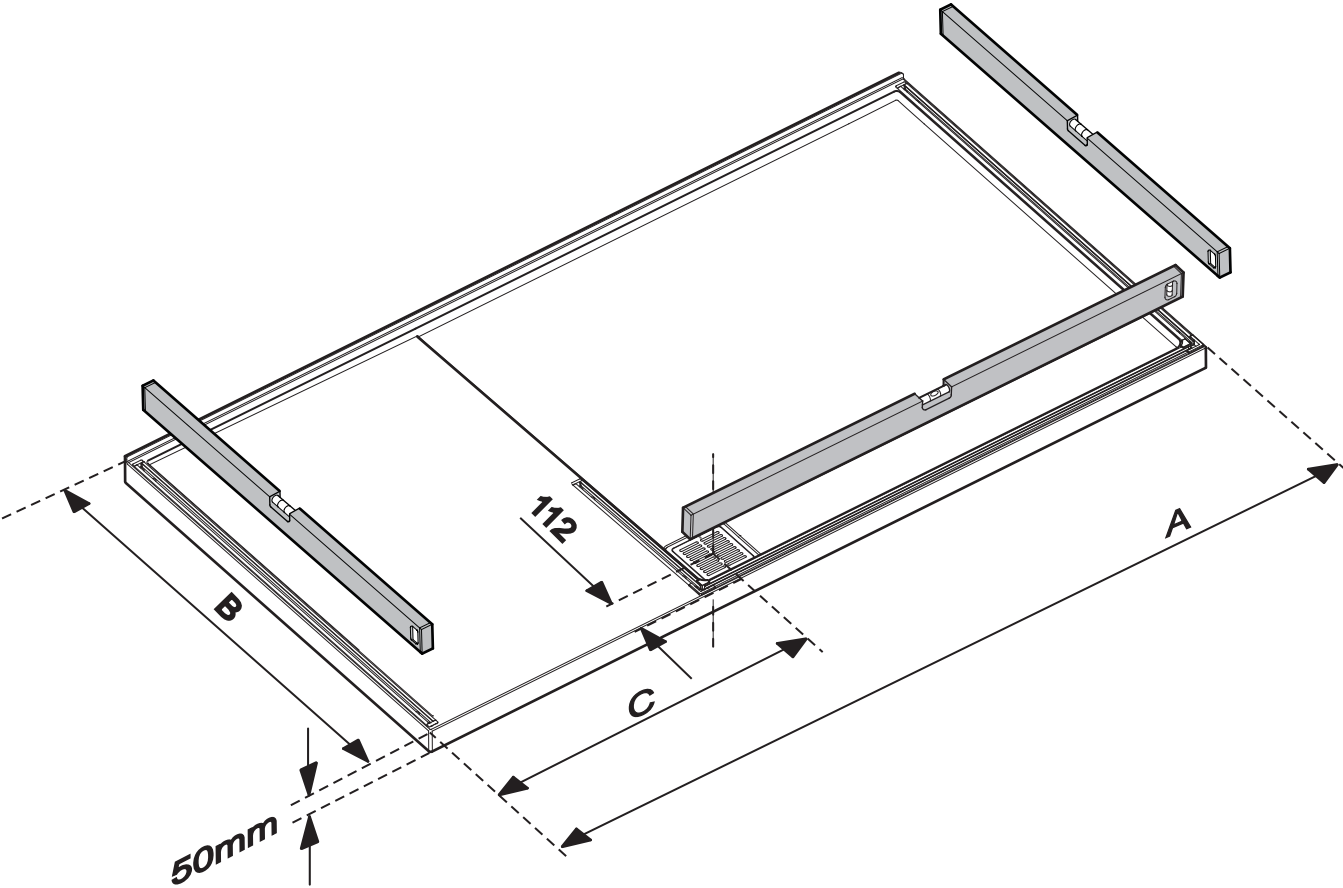
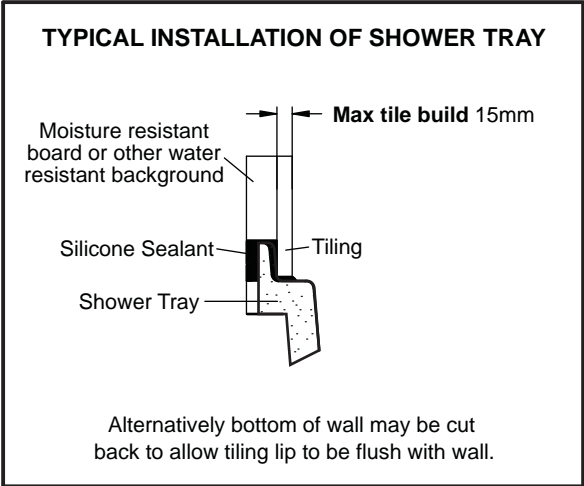


READ ONLY IF INSTALLING FLOOR MOUNTED TRAY

DIMENSIONS FOR TRAY

ILLUSTRATION SHOWS LH MODEL

TRAY MUST BE LEVEL
IN ALL PLANES

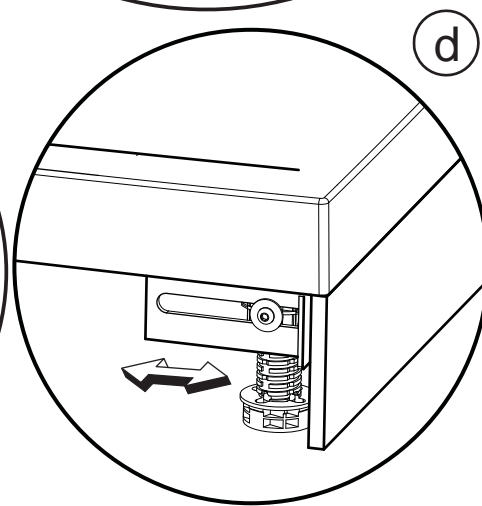
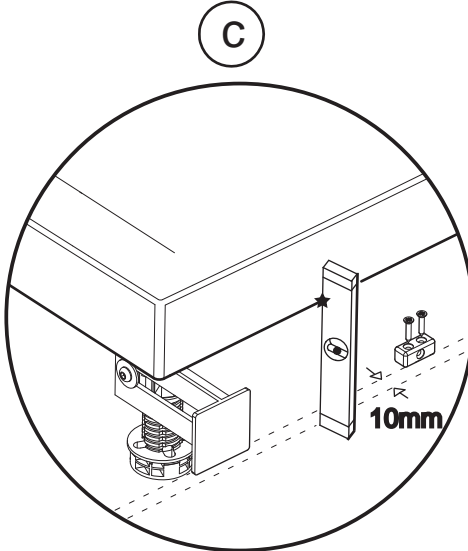
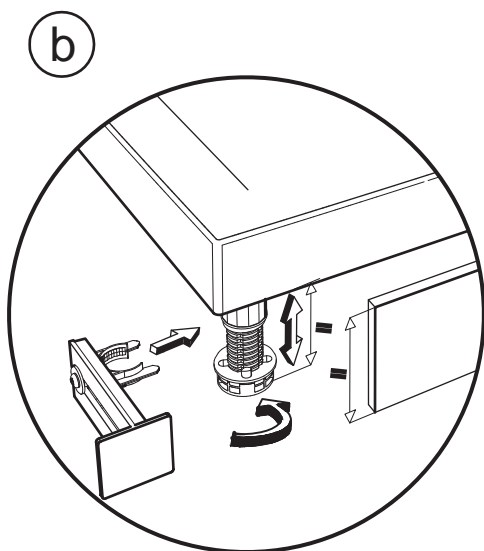
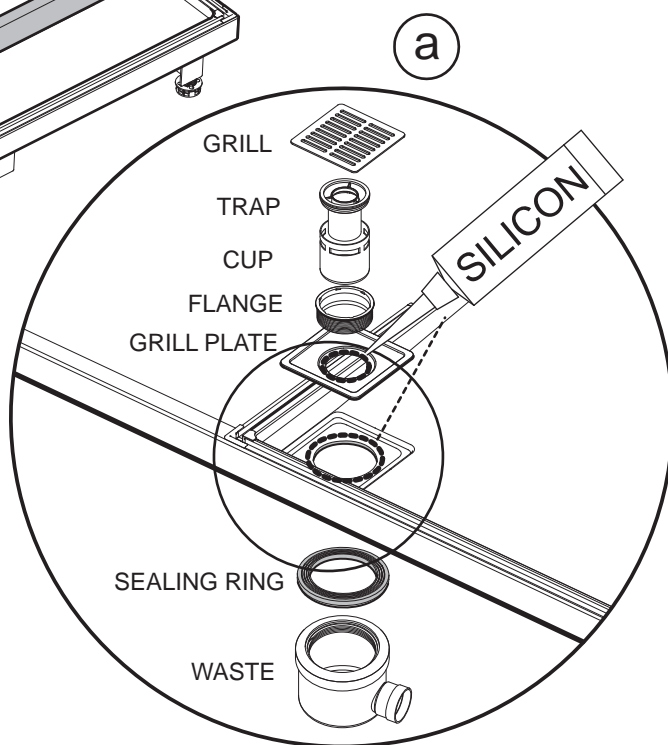
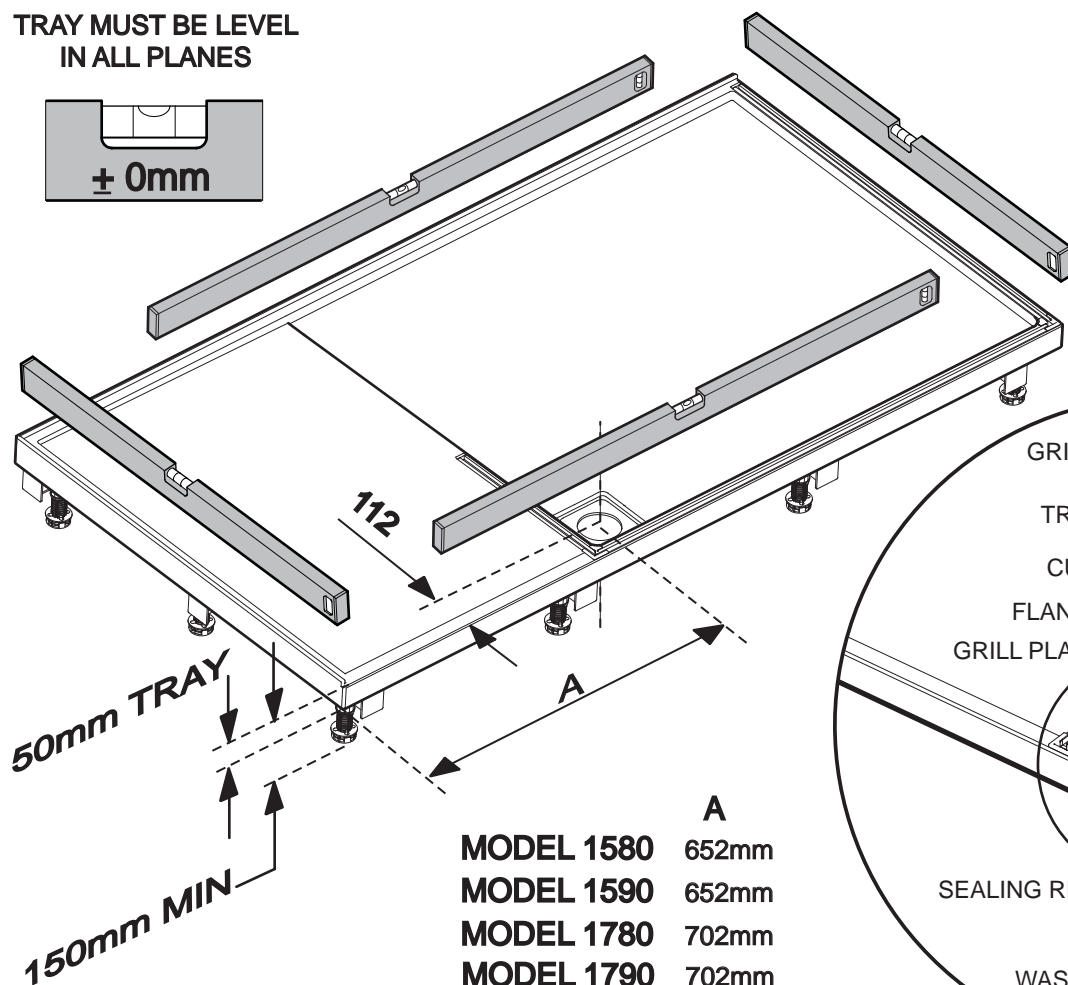
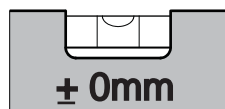


	A	B	C
MODEL 1580	1500mm	800mm	652mm
MODEL 1590	1500mm	900mm	652mm
MODEL 1780	1700mm	800mm	702mm
MODEL 1790	1700mm	900mm	702mm

READ ONLY IF INSTALLING RAISED TRAY

RAISED TRAY VERSIONS AND FITTING WASTE

TRAY MUST BE LEVEL
IN ALL PLANES



- When fitting the shower waste apply a small continuous bead of silicon to the tray waste recess before fitting the square grill plate. Also apply a small continuous bead of silicon sealant in the circular recess of the square grill plate before fitting the shower waste and flange together. See installation instructions with shower waste. Push fit the adjustable legs into cups on underside of the tray.
- Adjust the height of the tray by winding the lower part of the leg to match the height of the front panel. Clip the panel brackets provided on to the legs that will be supporting the panel.
- If required fit the support blocks supplied between legs.
- Adjust the panel brackets so that the panel is flush with the front face of the tray. The Matki panels are supplied extra long and these can be trimmed to size if needed using a fine toothed hacksaw. Align the velcro pads supplied with the panel brackets and fit the panel.

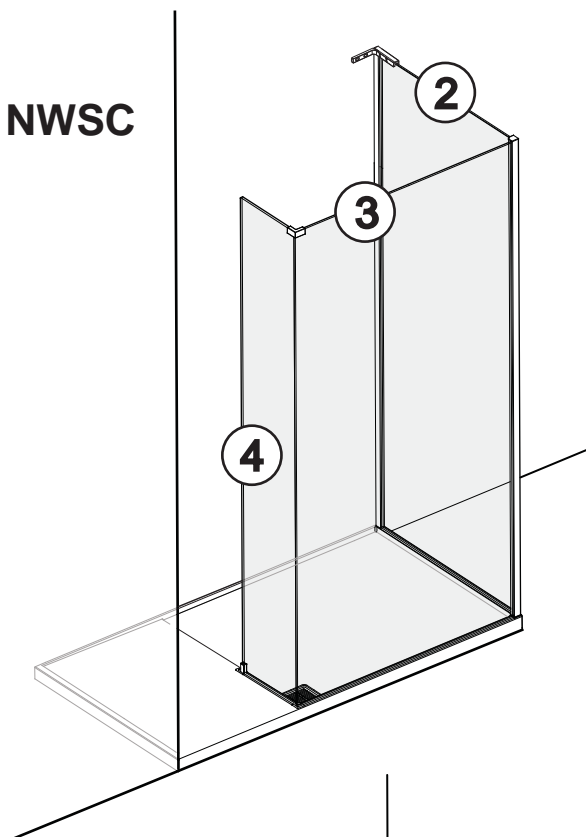
READ FOR ALL MODELS

PANEL FITTING INDEX

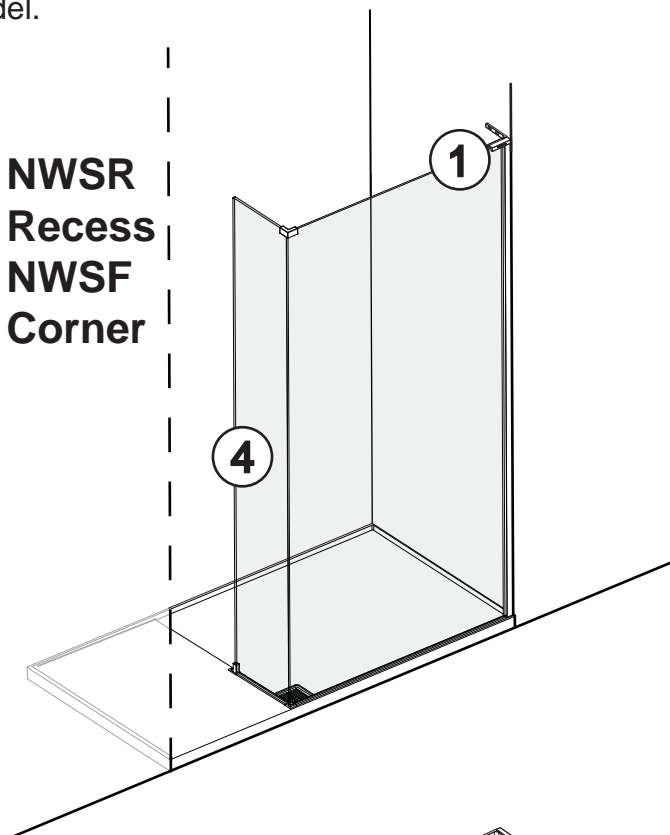
ILLUSTRATIONS SHOW LH MODELS

See relevant panel fitting instructions for the model.

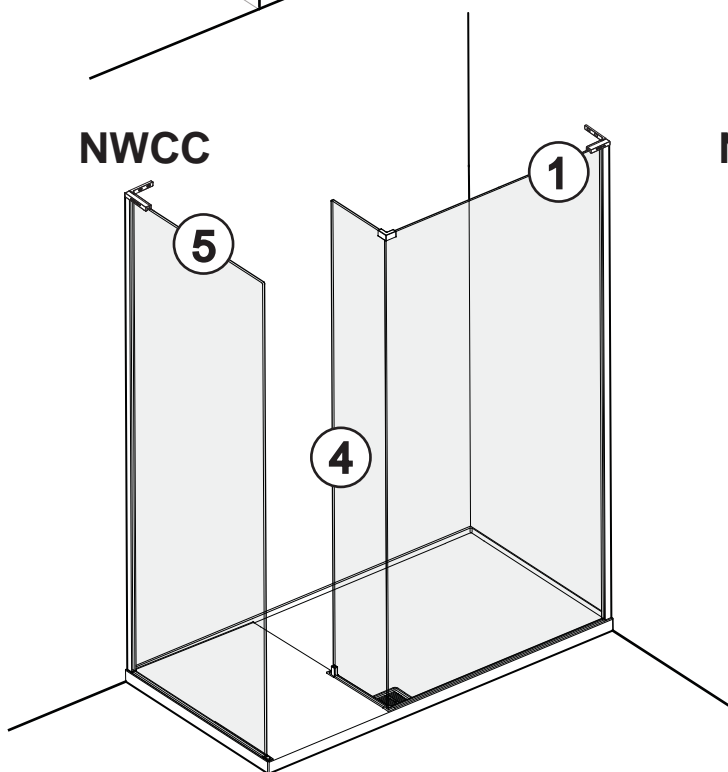
NWSC



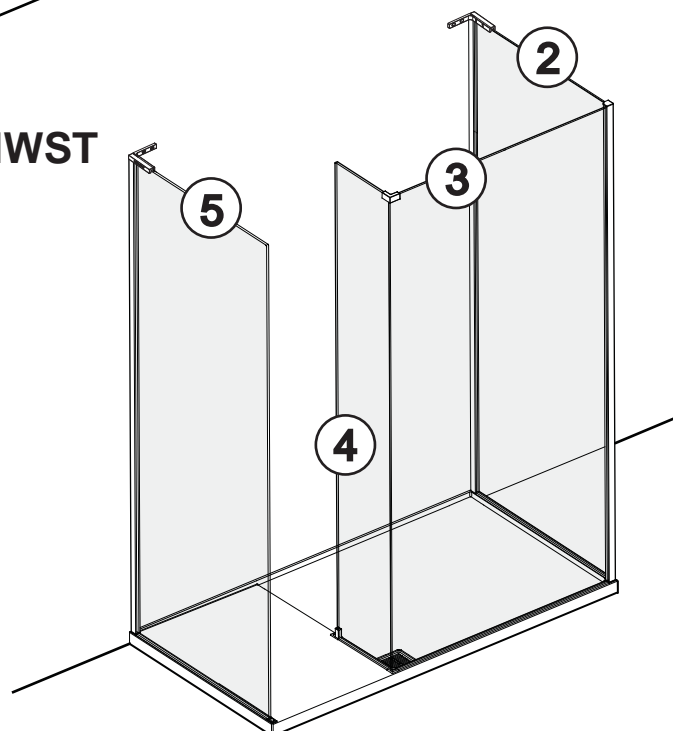
**NWSR
Recess
NWSF
Corner**



NWCC



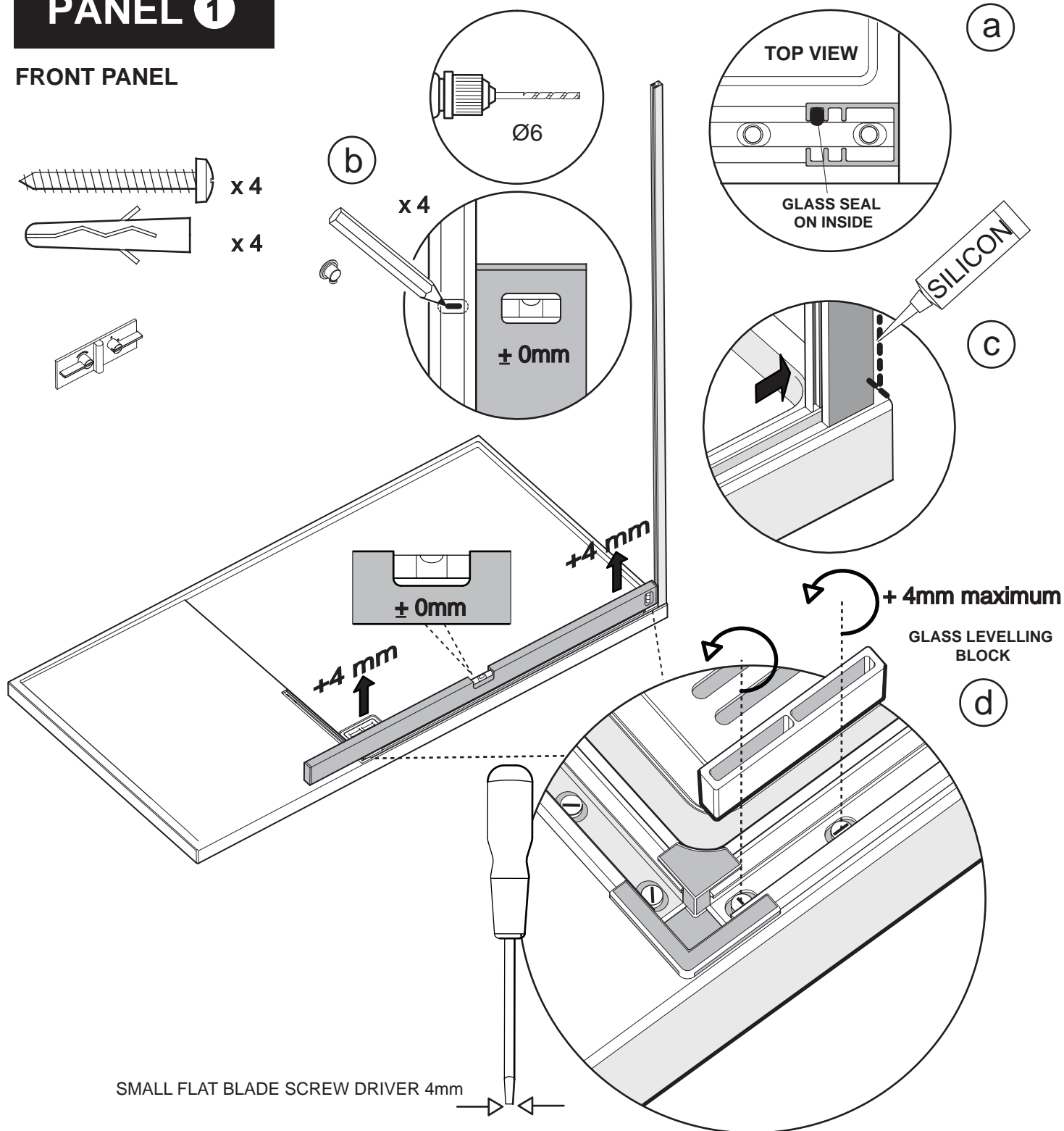
NWST



PANEL 1

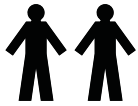
READ ONLY WHEN INSTALLING MODELS NWCC OR NWSR/NWSF

FRONT PANEL



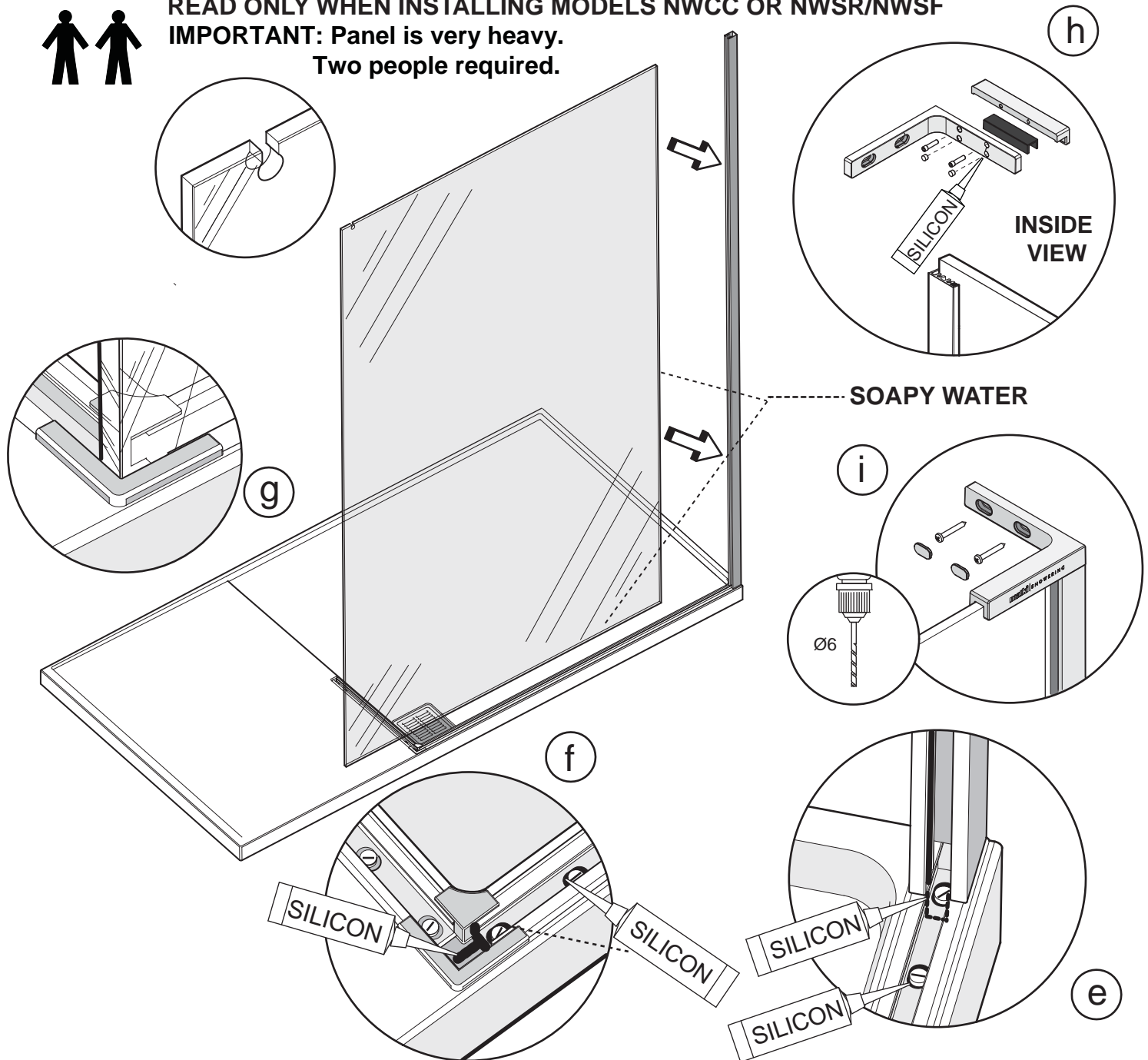
This stage is describing the fitting of the Front panel wall mount.

- Place the wall mount onto the top of the tray gasket with the wall mount glass seal on the inside. Align the opening in the wall mount with the opening in the tray glass gasket.
- Plumb the wall mount for upright and mark the fixing holes in the centre of the slots.
- Drill 4 x fixing holes in the wall and insert the wall plugs. Clean area and apply silicon sealant to the area behind the wall mount between the tray and tiles and 100mm up the wall, central to the width of the wall mount. Secure the wall mount using the No.8 x 32mm pan head screws, plumb the wall mount for upright do not overtighten the screws to allow for adjustment.
- The tray is fitted with adjustment screws in the base of the tray glass gaskets. Minor adjustments can be made to the level of the glass panel using these screws if the tray is not completely level before the glass panel is fitted. Place the clear glass levelling blocks into the tray gasket on top of the levelling adjustment screws, place a level between the blocks and check for level. Adjust the screws out in pairs at the required end of the level. Maximum upward adjustment of screws is 4mm. Maximum adjustment at one end will correct the glass for vertical by 8mm at the top. **DO NOT USE IF THE TRAY IS LEVEL.**



READ ONLY WHEN INSTALLING MODELS NWCC OR NWSR/NWSF

**IMPORTANT: Panel is very heavy.
Two people required.**



This stage is describing the fitting of the Front panel glass.

We recommend two people are available for this stage.

e. Before fitting the glass panel apply a small bead of silicon sealant around the tray gasket adjustment screws.

Apply a small 'U' shaped bead of silicon in the base and sides of the tray gasket at the opening of the wall mount.

f. Apply a small 'U' shaped bead of silicon in the base and sides of the tray gasket at the joint between the tray gasket and chrome corner cap and a bead in the base of the corner cap.

IMPORTANT: Fit the front panel with the cut out in the top of the glass panel away from the wall. Lightly wet the vertical and bottom horizontal edge of the glass panel with soapy water and gently lower the panel into the wall mount and tray gasket. Push the top of the panel into the wall mount first, followed by the bottom.

g. Adjust the glass panel so that the outside vertical edge is in the corner of the chrome corner cap.

h. Fitting of the Top bracket: Fit the rubber 'U' shaped gasket onto the top edge of the glass with the grooved face of the gasket facing outwards. Fit the wall bracket over the glass and onto the top of the wall mount.

i. Mark the centre of the slotted holes in the wall bracket onto the wall. Remove the wall bracket and drill and fix the wall plugs.

h. Refit the wall bracket. Clamp the bracket onto the glass by tightening the clamping screws on the inside of the bracket. Fit the clamping screw cover caps into the two unused holes on the inside of the wall bracket. Apply a small spot of silicon in the holes before fitting the caps.

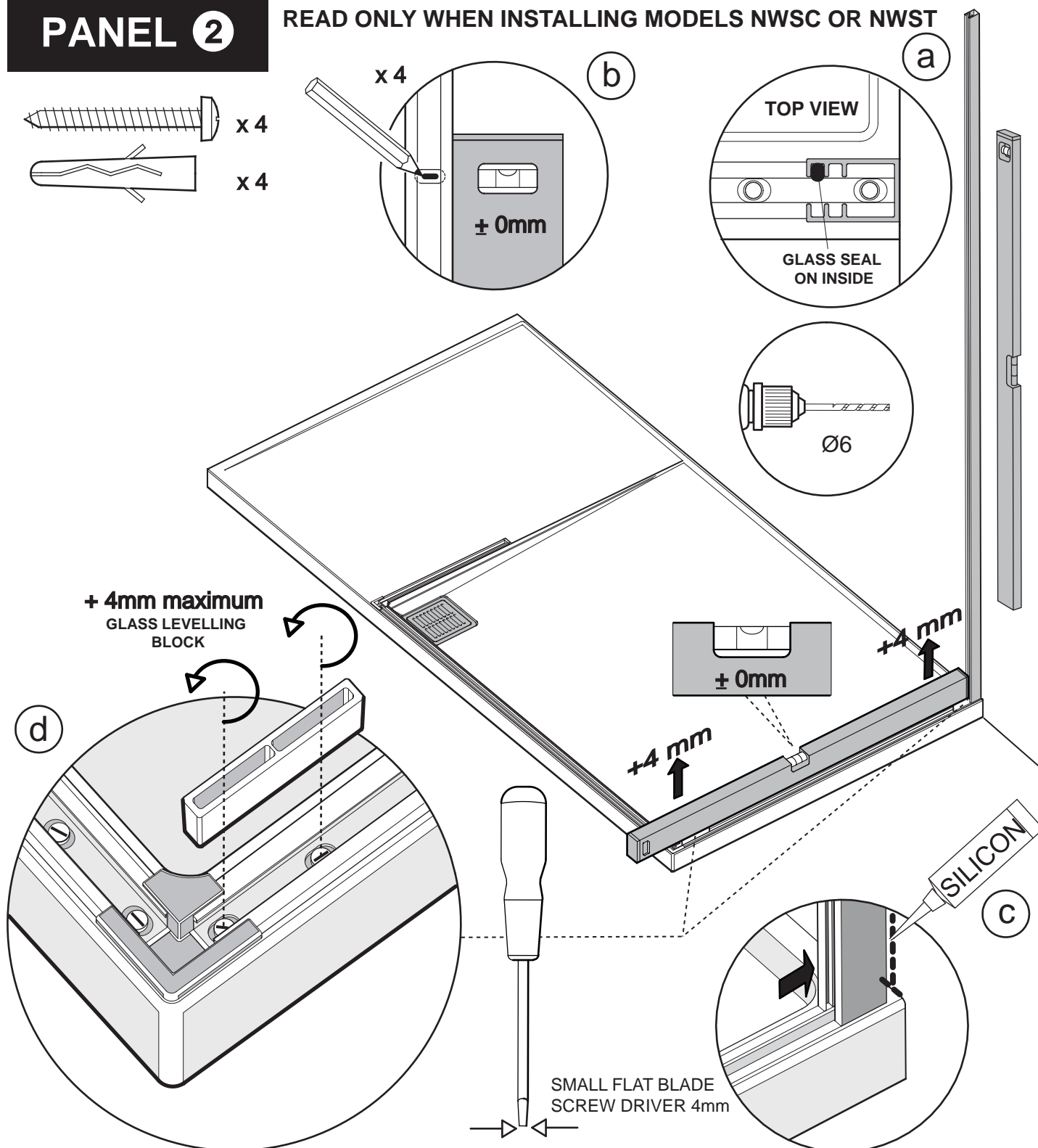
i. Fix the bracket to the wall using the No.8 x 50 Pan head screws and fit the bracket screw cover cap

Apply final silicon sealant to the wall mount when all stages of the installation are complete.

(See Silicon Sealant Stage)

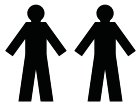
PANEL 2

READ ONLY WHEN INSTALLING MODELS NWSC OR NWST

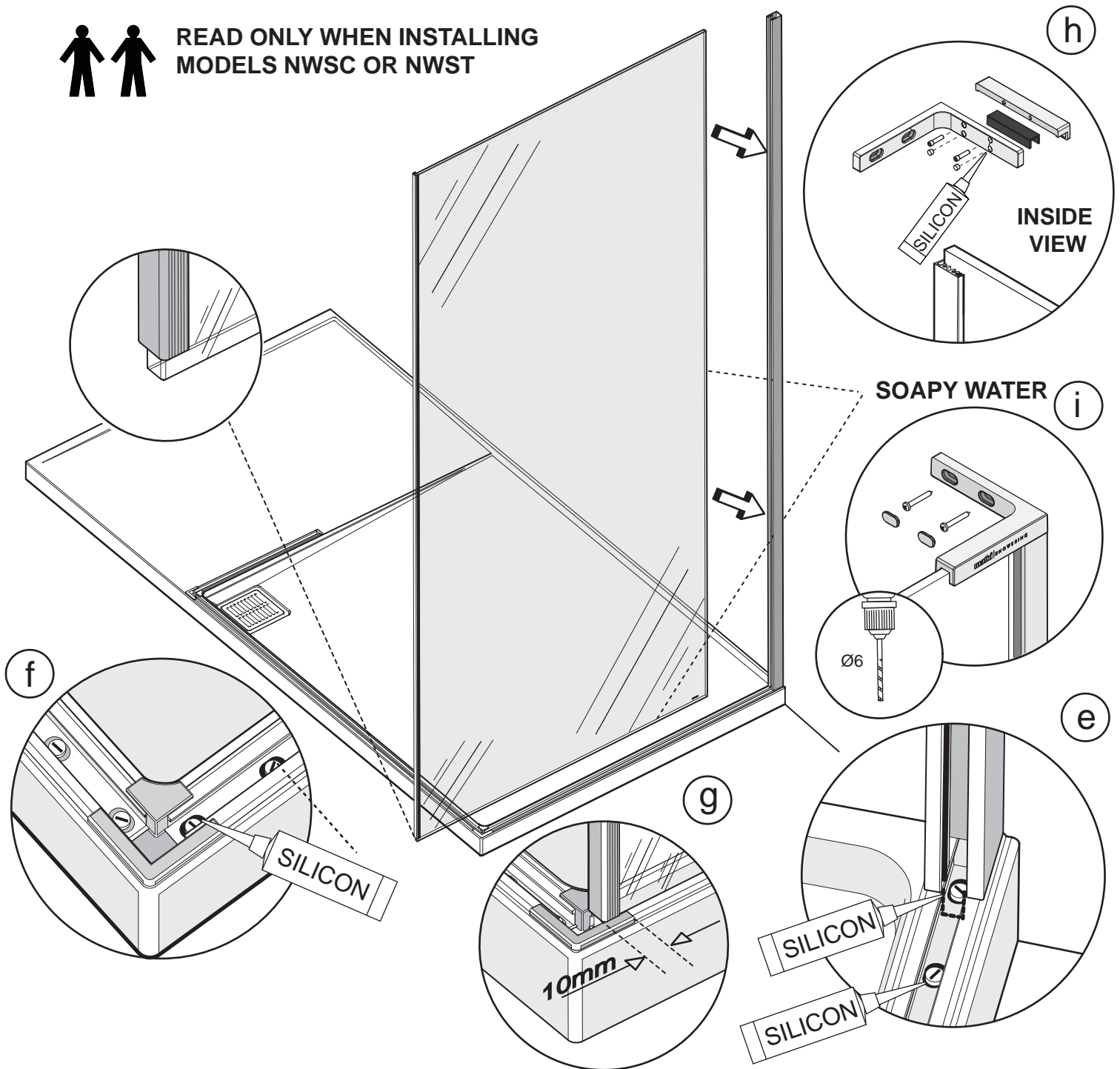


This stage is describing the fitting of the Corner panel wall mount.

- Place the wall mount onto the top of the tray gasket with the wall mount glass seal on the inside. Align the opening in the wall mount with the opening in the tray glass gasket.
- Plumb the wall mount for upright and mark the fixing holes in the centre of the slots.
- Drill 4 x fixing holes in the wall and insert the wall plugs. Clean area and apply silicon sealant to the area behind the wall mount between the tray and tiles and 100mm up the wall, central to the width of the wall mount. Secure the wall mount using the No.8 x 32mm pan head screws, plumb the wall mount for upright do not overtighten the screws to allow for adjustment.
- The tray is fitted with adjustment screws in the base of the tray glass gaskets. Minor adjustments can be made to the level of the glass panel using these screws if the tray is not completely level before the glass panel is fitted. Place the clear glass levelling blocks into the tray gasket on top of the levelling adjustment screws, place a level between the blocks and check for level. Adjust the screws out in pairs at the required end of the level. Maximum upward adjustment of screws is 4mm. Maximum adjustment at one end will correct the glass for vertical by 8mm at the top. **DO NOT USE IF THE TRAY IS LEVEL.**



**READ ONLY WHEN INSTALLING
MODELS NWSC OR NWST**



This stage is describing the fitting of the Corner panel glass.

We recommend two people are available for this stage.

- e.** Before fitting the glass panel apply a small bead of silicon sealant around the tray gasket adjustment screws.
Apply a small 'U' shaped bead of silicon in the base and sides of the tray gasket at the opening of the wall mount.
 - f.** Apply a small bead of silicon sealant around the tray gasket adjustment screws at the chrome corner cap.
IMPORTANT: Fit the Corner panel with the vertical extrusion frame away from the wall. The bottom of the vertical frame stops short on the glass panel. Lightly wet the vertical and bottom horizontal edge of the glass panel with soapy water and gently lower the panel into the wall mount and tray gasket. Push the top of the panel into the wall mount first, followed by the bottom.
 - g.** Adjust the glass panel so that the outside vertical edge is 10mm in from the outside edge of the chrome corner cap.
 - h. Fitting of the Top bracket:** Fit the rubber 'U' shaped gasket onto the top edge of the glass with the grooved face of the gasket facing outwards. Fit the wall bracket over the glass and onto the top of the wall mount.
 - i.** Mark the centre of the slotted holes in the wall bracket onto the wall. Remove the wall bracket and drill and fix the wall plugs.
 - h.** Refit the wall bracket. Clamp the bracket onto the glass by tightening the clamping screws on the inside of the bracket. Fit the clamping screw cover caps into the two unused holes on the inside of the wall bracket. Apply a small spot of silicon in the holes before fitting the caps.
 - i.** Fix the bracket to the wall using the No.8 x 50 Pan head screws and fit the bracket screw cover cap
- Apply final silicon sealant to the wall mount when all stages of the installation are complete.**
(See Silicon Sealant Stage)

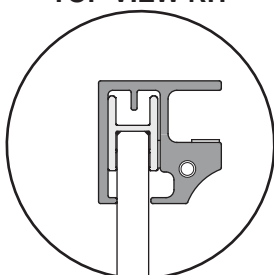
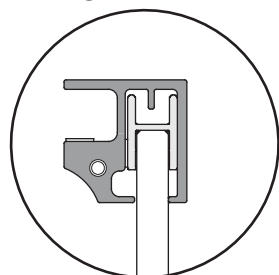
PANEL 3

READ ONLY WHEN INSTALLING
MODELS NWSC OR NWST

CORNER FRONT PANEL

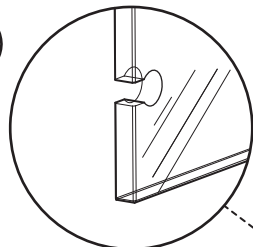
TOP VIEW LH

TOP VIEW RH

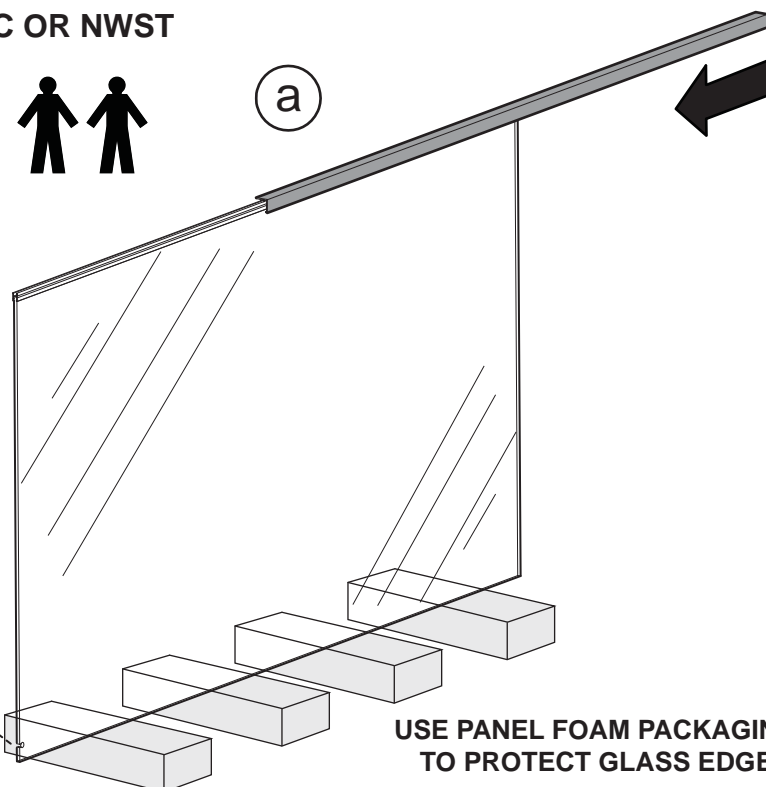


CUT OUT AT TOP

(b)

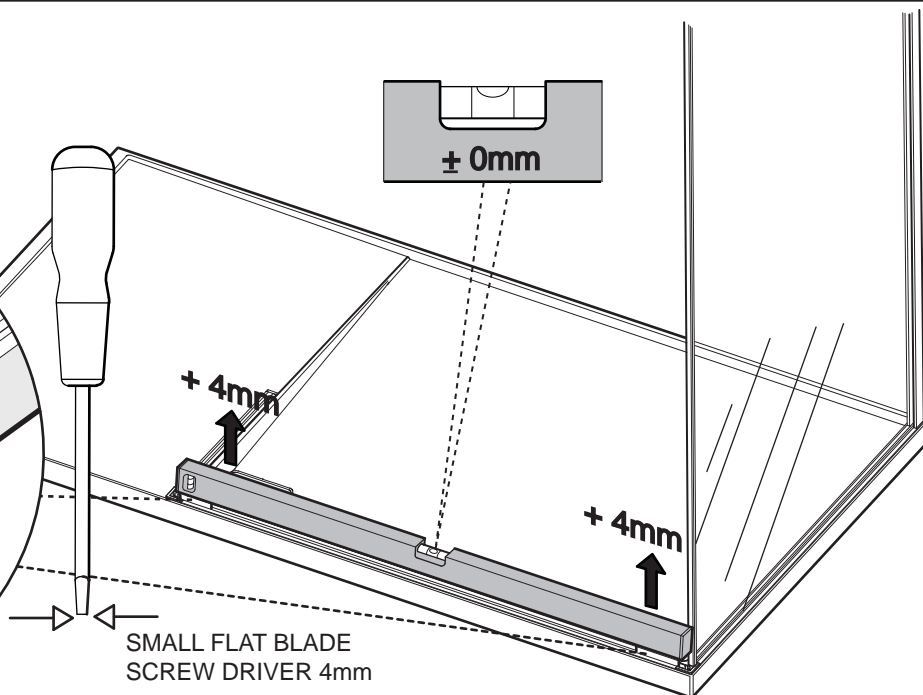
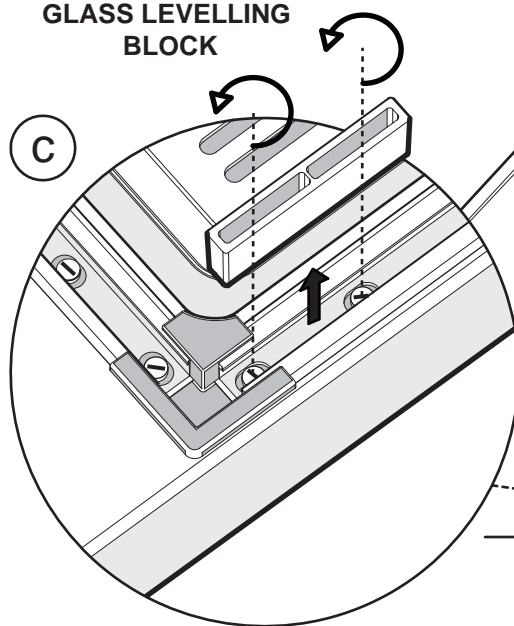


(a)



+ 4mm maximum
GLASS LEVELLING
BLOCK

(c)

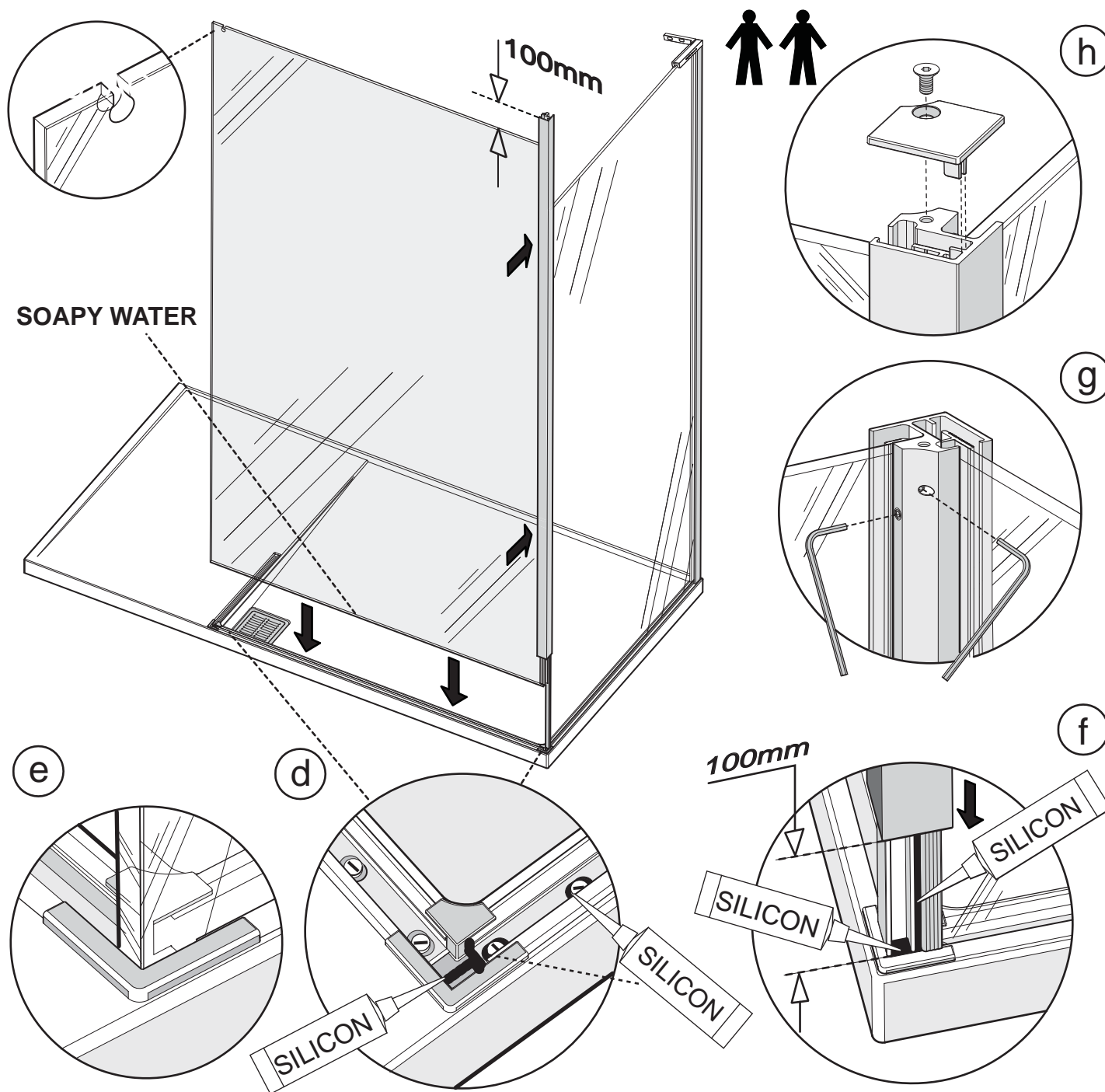


This stage is describing the fitting of the Corner Front panel glass Corner vertical frame.

We recommend two people are available for this stage.

- The Corner front panel glass is not handed but requires the corner vertical frame to be fitted to join the panel to the corner panel. Remove the glass panel from the packaging use the foam buffers to protect the edge of the glass panel while fitting the corner vertical frame.
- Viewing from the top end of the panel orientate the corner frame for the hand of unit you are fitting. The top of the glass panel is indicated by the key hole shaped cut out. Slide the frame over the 'H' shaped frame on the edge of the glass panel. Push the corner frame above the top edge of the glass by 100mm ready for fitting.
- The tray is fitted with adjustment screws in the base of the tray glass gaskets. Minor adjustments can be made to the level of the glass panel using these screws if the tray is not completely level before the glass panel is fitted. Place the clear glass levelling blocks into the tray gasket on top of the levelling adjustment screws, place a level between the blocks and check for level. Adjust the screws out in pairs at the required end of the level. Maximum upward adjustment of screws is 4mm. Maximum adjustment at one end will correct the glass for vertical by 8mm at the top. **DO NOT USE IF THE TRAY IS LEVEL.**

READ ONLY WHEN INSTALLING MODELS NWSC OR NWST



This stage is describing the fitting of the Corner Front panel glass.

We recommend two people are available for this stage.

d. Before fitting the glass panel apply a small bead of silicon sealant around the tray gasket adjustment screws.

Apply a small 'U' shaped bead of silicon in the base and sides of the tray gasket at the joint between the tray gasket and chrome corner cap and a bead in the base of the corner cap.

IMPORTANT

Fit the corner front panel with the cut out in the top of the glass panel. Lightly wet the bottom horizontal edge of the glass panel with soapy water and gently lower the panel into tray gasket and onto the end of the corner panel. Ensure that the corner vertical frame is lifted 100mm above the top edge of the glass for applying silicon sealant under the corner frame.

e. Adjust the glass panel so that the outside vertical edge is in the corner of the chrome corner cap.

f. Apply silicon sealant onto the ends of the glass panels in the corner cap and apply a vertical bead up 100mm between the end frames of the corner front panel and corner panel. Push the Corner frame down to the corner cap, allow any excess sealant on the joint between the corner cap and corner frame to cure before removal.

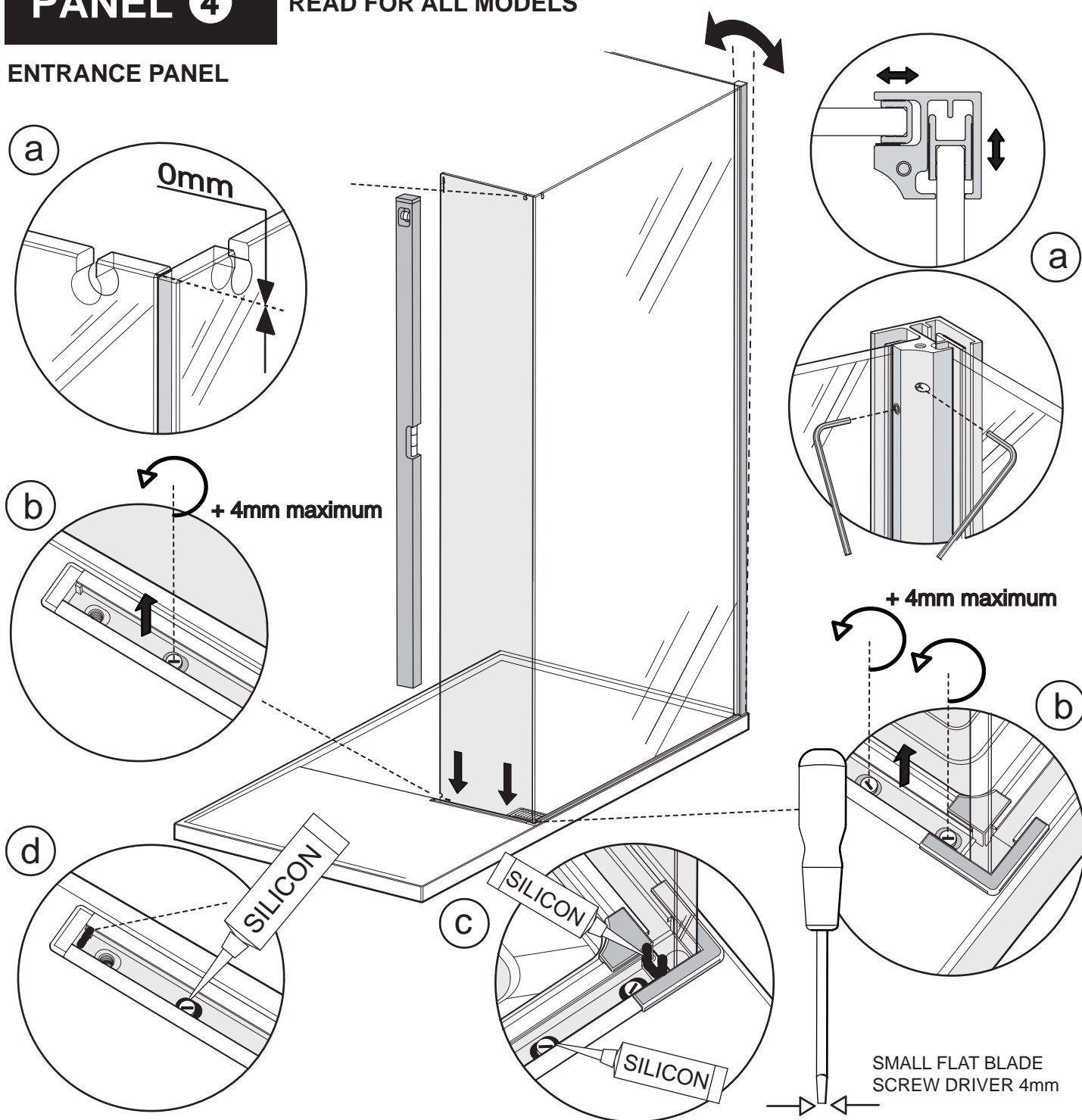
g. Adjust the corner frame for upright and lock into position with the locking screws on the inside top and bottom corner of the vertical frame.

h. Fit the corner vertical frame top cap and secure with the M4 x 8 csk screw.

PANEL 4

READ FOR ALL MODELS

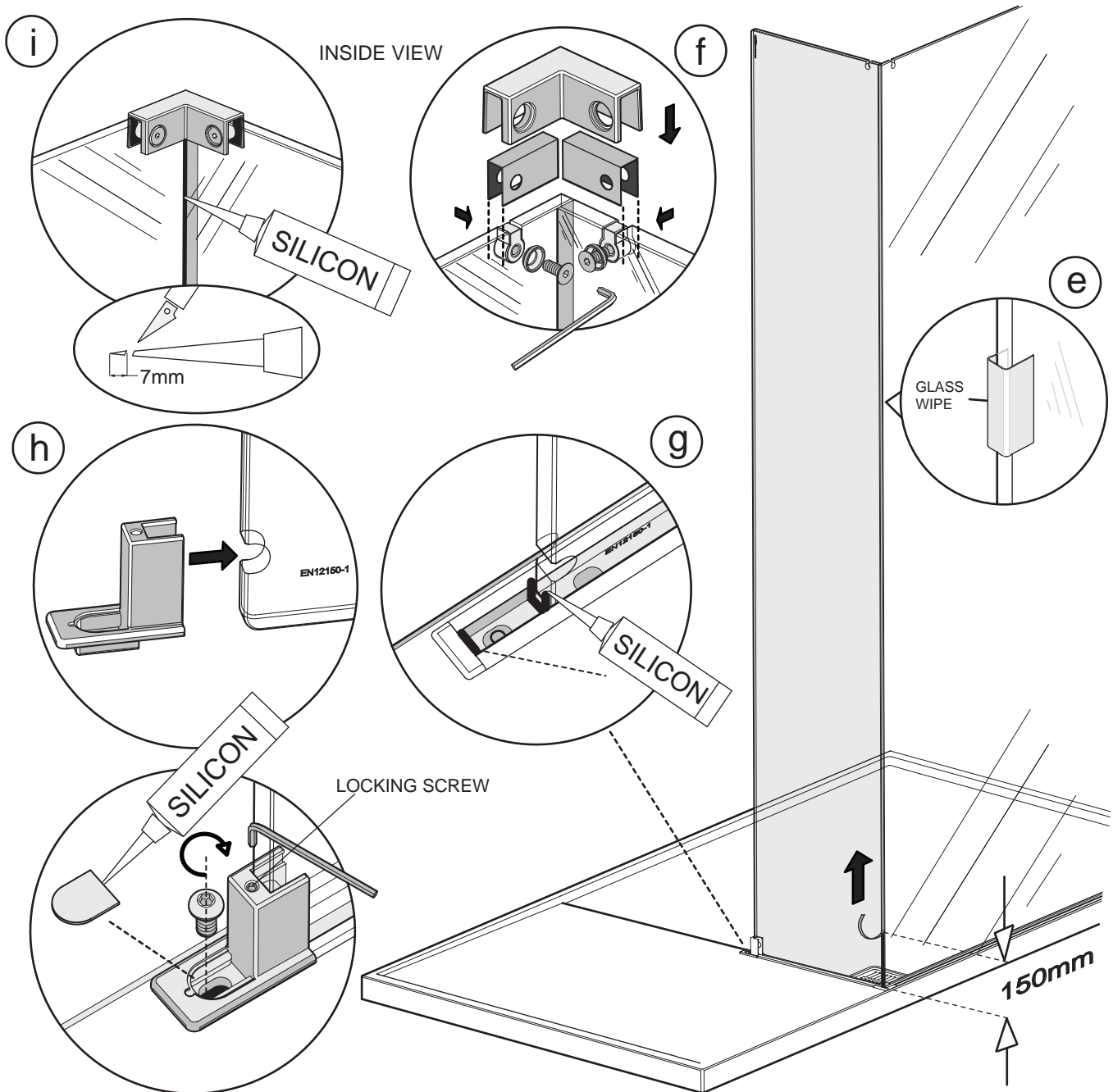
ENTRANCE PANEL



This stage is describing the adjustment of the Entrance panel before final fitting.

- a.** Temporarily fit the entrance panel into the tray gasket to check the level of the the entrance panel with the Front panel. For NWSC and NWST models there is adjustment in the corner vertical frame which can be used to adjust the vertical line of the front panel with the entrance panel. Adjust as required and lock in position with the set screws on the inside top and bottom of the corner vertical frame. For NWCC and NWSR/NWSF models adjust the wall mount left or right of vertical as required.
- b.** The tray is fitted with adjustment screws in the base of the tray glass gaskets. Minor adjustments can be made to the level of the entrance panel using these screws to ensure that it is level with the top of the front glass panel. Adjust the screws out as required to level. Maximum upward adjustment of screws is 4mm.
- c.** Before the final fitting of the entrance glass panel apply a small bead of silicon sealant around the tray gasket adjustment screws. Apply a small 'U' shaped bead of silicon in the base and sides of the tray gasket where it meets the chrome corner cap and front glass panel.
- d.** Apply a small bead of silicon sealant at the end of the tray gasket and second adjustment screw do not silicon in first hole this is for fitting the entrance panel clamp.

READ FOR ALL MODELS



This stage is describing the fitting of the Entrance panel.

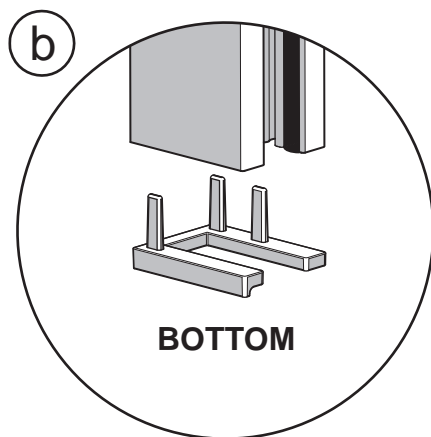
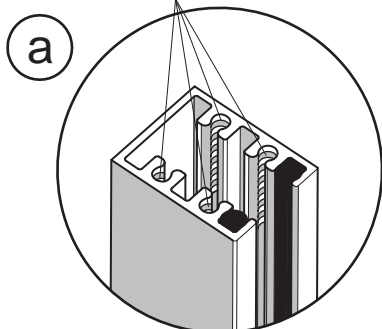
- e. Before fitting the entrance panel, clean the face of the front panel glass that will be bonded to the entrance panel using the cleaning wipe supplied. **Final bonding of corner joint between panels:** Before fitting the Entrance panel, peel back approximately 150mm of the yellow backing film from the Bonding tape that is on the edge of the Entrance panel. Peel the backing film from the bottom upwards to aid removal of the film once the panel is in position. Carefully move the front panel away from the entrance panel at the top, to create a slight 'V' shaped gap between the entrance panel and front panel. Slowly remove the backing film from the removed edge working upwards aligning the glass face and edge. Press the glass together as the backing film is removed, when 300mm from the top remove all the backing film and press firmly together. **Allow 12 hours for the bond to fully cure before showering.**
- f. Fit the Corner bracket to secure the glass panels together. The bracket is supplied assembled. Fit the white keyhole shaped inserts into the cut outs in the glass panels. Fit the black 'U' shaped gaskets over the glass to retain the keyhole inserts aligning the hole in the gaskets with the threaded hole in the inserts. Fit the bracket onto the glass panels, secure the bracket on the inside fitting the washers then csk screws into the recess features on the inside of the bracket. **Do not overtighten.**
- g. Apply a small 'U'-shaped bead of silicon sealant in the base and sides of the tray gasket at the end of the entrance panel glass and end of the tray gasket.
- h. Fit the Entrance panel clamp plate into the cut out in the bottom edge of the panel and into the tray glass gasket. Secure the clamp plate to the tray with the M6 button head screw. Adjust the locking screw down in the top of the entrance panel clamp until tight. Place a small spot of silicon sealant under the screw cover and fit.
- i. Apply a very thin bead of silicon along the full length of the inside joint where the Front panel and Entrance panel meet. **Allow the silicon to cure for 24 hours before using the shower.**

PANEL 5

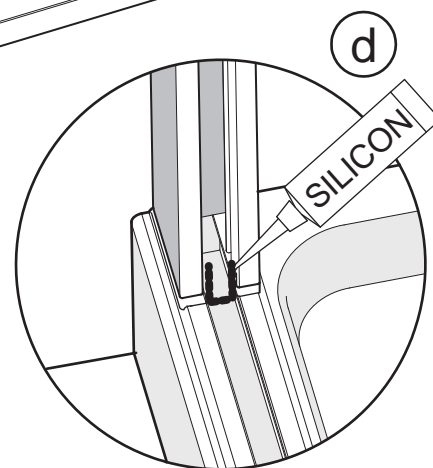
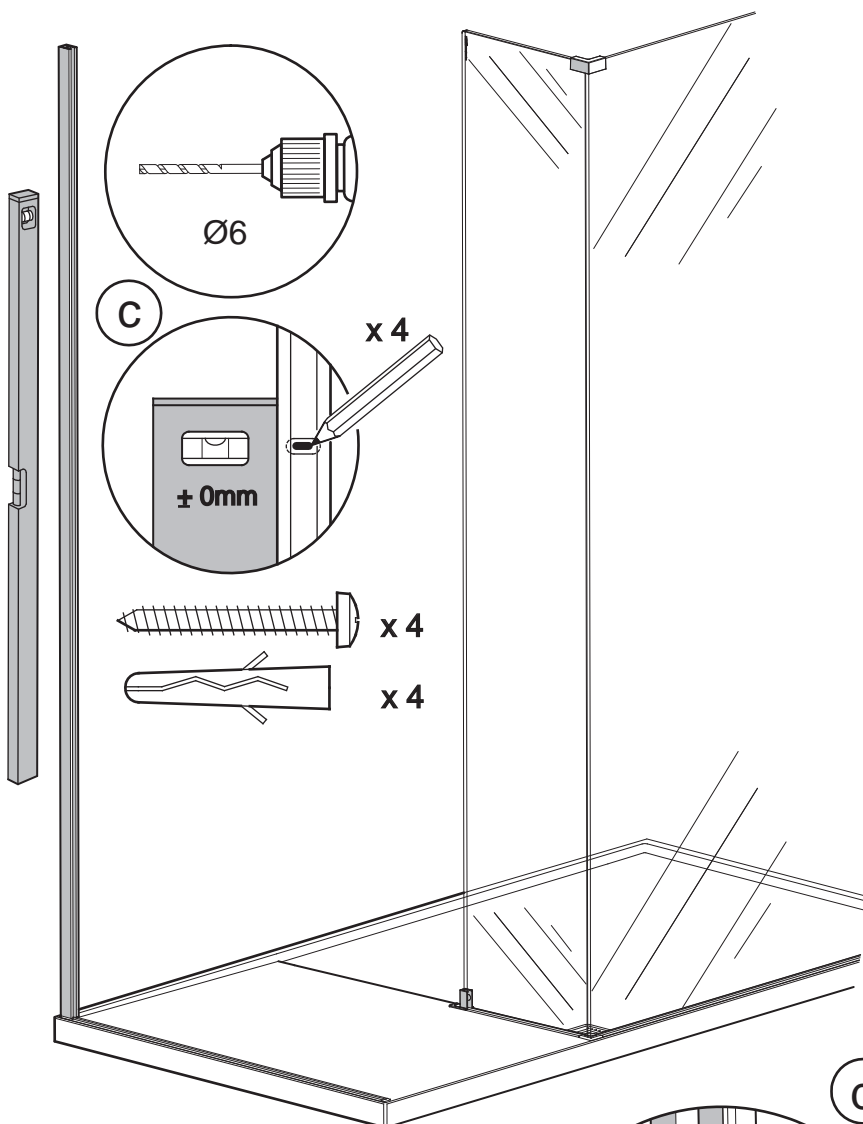
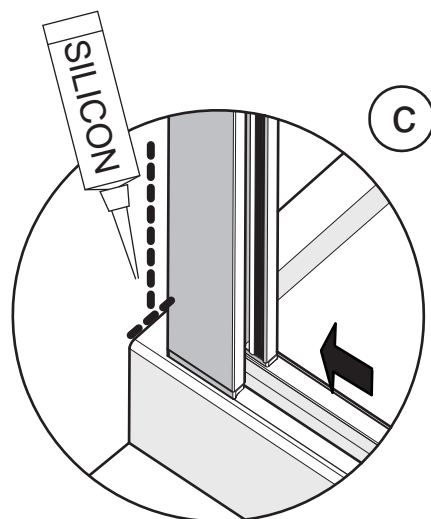
READ ONLY WHEN INSTALLING MODELS NWCC OR NWST

ENTRANCE SIDE PANEL

TOP THREADS IN SCREW PORTS



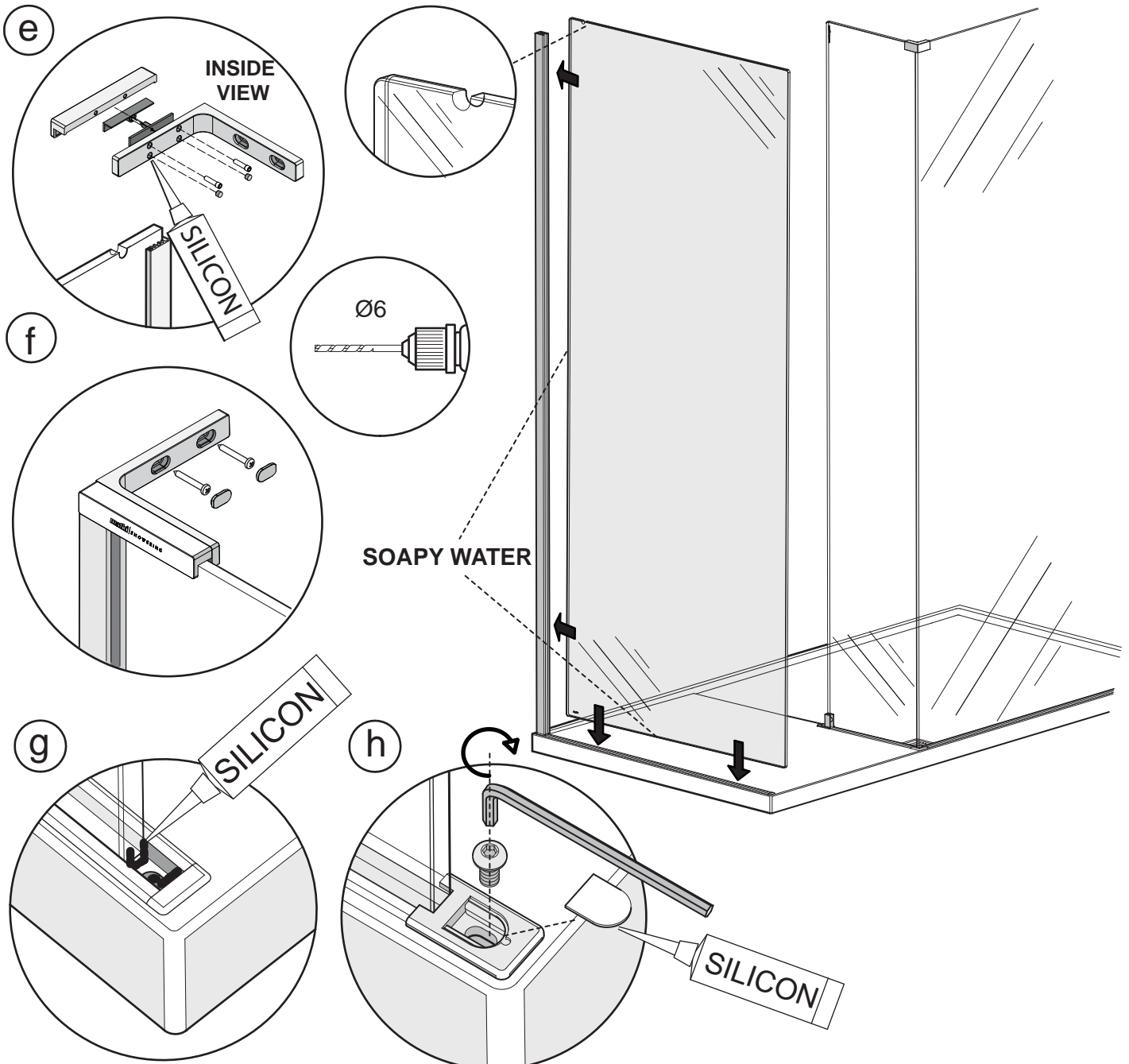
BOTTOM



This stage is describing the fitting of the Entrance Side panel wall mount.

- The Wall mount has a top and bottom, the top has the threaded holes for the fitting of the top wall bracket.
- Before placing the wall mount fit the bottom cap with the thicker edge on the outside. Place the wall mount onto the top of the tray glass gasket. Align the opening in the wall mount with the opening in the tray glass gasket.
- Plumb the wall mount for upright and mark the fixing holes in the centre of the slots. Drill 4 x fixing holes in the wall and insert the wall plugs. Clean area and apply silicon sealant to the area behind the wall mount between the tray and tiles and 100mm up the wall, central to the width of the wall mount. Secure the wall mount using the No.8 x 32mm pan head screws, plumb the wall mount for upright do not overtighten the screws to allow for adjustment.
- Before fitting the Entrance Side panel glass apply a small 'U' shaped bead of silicon in the base and sides of the tray gasket at the opening of the wall mount.

READ ONLY WHEN INSTALLING MODELS NWCC OR NWST



This stage is describing the fitting of the Entrance Side Panel.

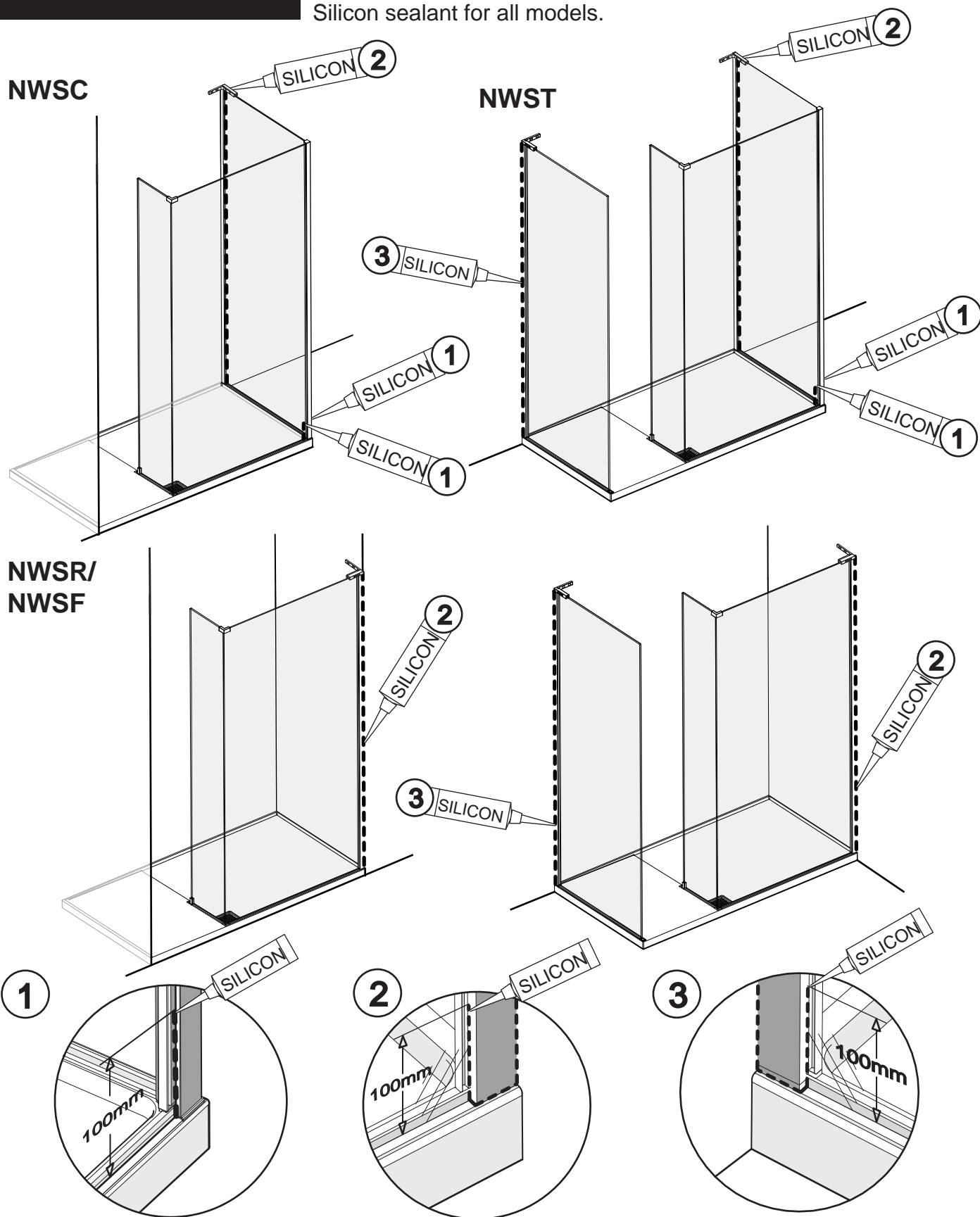
IMPORTANT - Before fitting the entrance side panel, lightly wet the vertical and horizontal edges of the glass panel with soapy water and gently lower the panel into the wall mount and tray gasket. Push the top of the panel into the wall mount first, followed by the bottom.

- e.** Fit the two piece hard plastic 'u' shaped gasket into the cut out in the top edge of the glass with the grooved face of the gasket facing outwards. Fit the wall bracket over the glass and onto the top of the wall mount. d. Mark the centre of the slotted holes in the wall bracket onto the wall, remove the wall bracket and drill and fix the wall plugs. Refit the wall bracket. Clamp the bracket to the glass by tightening the clamping screws on the inside of the bracket. Fit the clamping screw cover caps into the two unused holes on the inside of the wall bracket. Apply a small spot of silicon in the holes before fitting the caps.
- f.** Fix the bracket to the wall using the No.8 x 50 pan head screws and fit the bracket screw cover caps.
- g.** Apply a 'U' shaped bead of silicon sealant in the base and sides of the tray gasket at the end of the glass panel and end of the gasket.
- h.** Fit the Entrance side panel cap into the tray gasket and secure with the M6 button head screw, place a small spot of silicon sealant under the screw cover and fit.

**Apply final silicon sealant to the wall mount when all stages of the installation are complete.
(See Silicon Sealant Stage)**

SILICON SEALANT

READ FOR ALL MODELS
ILLUSTRATIONS SHOW LH MODELS
 Silicon sealant for all models.



1.NWSC and NWST.

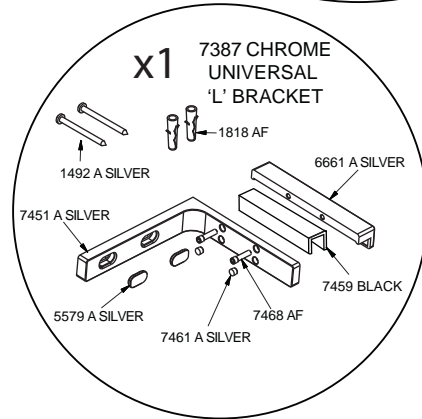
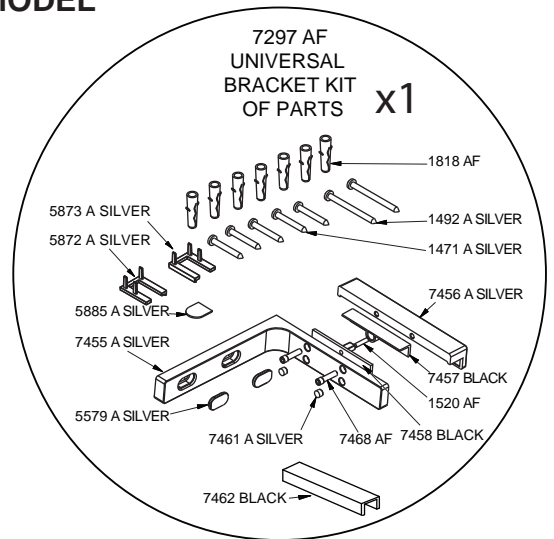
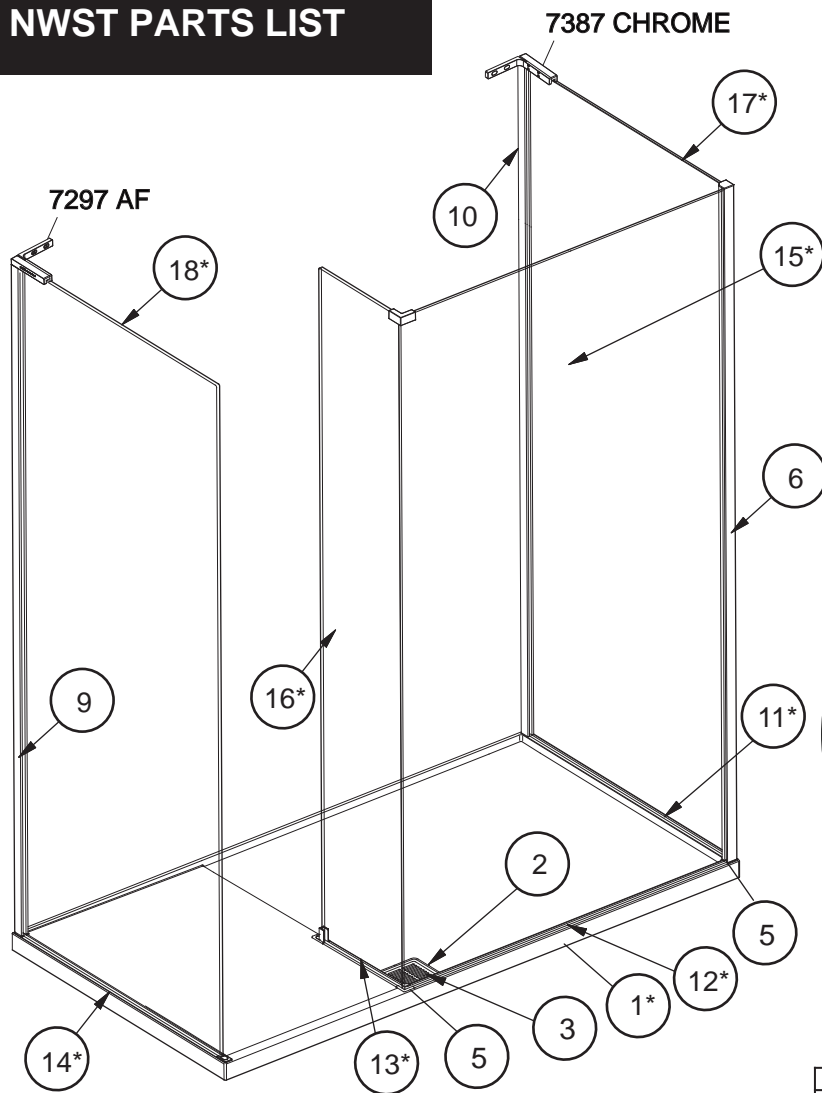
Apply a thin bead of silicon at the bottom of the corner extrusion 100mm up the joint between the front and corner glass panels and the corner extrusion.

2&3.NWCC, NWSC, NWSR, NWST.

Apply a thin bead of silicon along the bottom edge of both the wall mounts where they meet the tray and 100mm up the joint between the glass panel and wall mount. Apply silicon all the way up the outside of the wall mount extrusion between the wall mount and the tiles. Masking tape can be used to achieve a tidy edge to the sealant. Remove the masking tape immediately and allow the silicon to cure for 24 - 48 hours before using the shower.

NWST PARTS LIST

ILLUSTRATION SHOWS LH MODEL



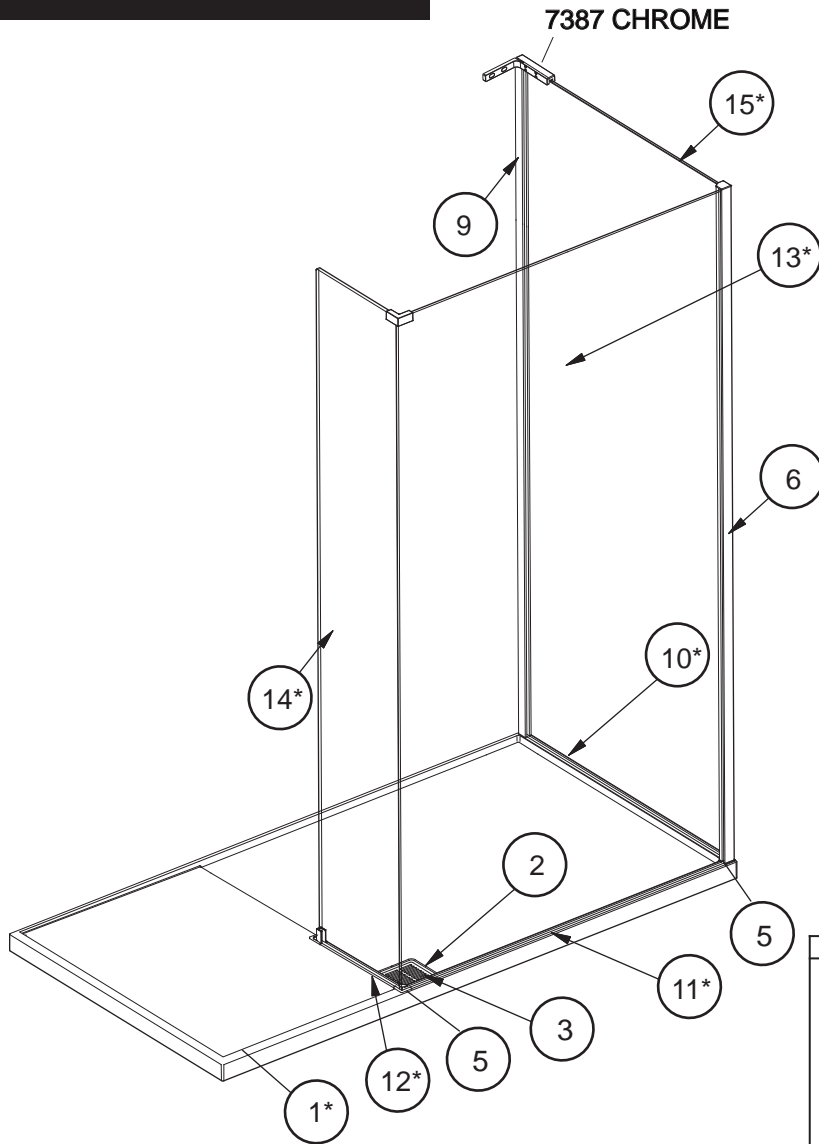
* ITEM VARIES DEPENDING ON MODEL

PARTS LIST				
ITEM	DESCRIPTION	PART NUMBER	QTY	LENGTH
*	1 NWST 1700 X 900 LH		1	
	NWST 1700 X 900 RH		1	
	NWST 1700 X 800 LH		1	
	NWST 1700 X 800 RH		1	
	NWST 1500 X 900 LH		1	
	NWST 1500 X 900 RH		1	
2	SQUARE WASTE FLANGE	5861 A SILVER	1	
3	SQUARE TRAY GRILL	7491 A SILVER	1	
4	FAST FLOW WASTE WITH 70mm FLANGE	RR0000402	1	
5	CORNER TRAY CAP	5882 A SILVER	2	
6	CORNER EXTRUSION	5790 A SILVER	1	1997mm
7	M4 X 8 SOCKET SET SCREW	1360 A SILVER	2	
8	M4 X 14 SOCKET SET SCREW	1279 A SILVER	2	
9	END PANEL MOUNT	5794 A SILVER	1	1979mm
10	WALL MOUNT	5786 A SILVER	1	1982mm
*	11 CORNER PANEL TRAY GASKET			
	MODEL 800	2329 WHITE	1	751mm
	MODEL 900	2330 WHITE	1	851mm
*	12 FRONT PANEL TRAY GASKET			
	MODEL 1500	2327 WHITE	1	909mm
	MODEL 1700	2328 WHITE	1	1060mm
*	13 ENTRANCE PANEL TRAY GASKET			
	MODEL 800	2331 WHITE	1	257mm
	MODEL 900	2332 WHITE	1	357mm
*	14 ENTRANCE SIDE PANEL TRAY GASKET			
	MODEL 800	2325 WHITE	1	759mm
	MODEL 900	2326 WHITE	1	859mm
*	15 CORNER FRONT PANEL GLASS			
	MODEL 1500	7970 M CLEAR/PLAIN	1	2000 x 928mm
	MODEL 1700	7971 M CLEAR/PLAIN	1	2000 x 1078mm
*	16 ENTRANCE PANEL GLASS			
	MODEL 800	7977 M CLEAR/PLAIN	1	2000 x 234mm
	MODEL 900	7976 M CLEAR/PLAIN	1	2000 x 334mm
*	17 CORNER PANEL GLASS			
	MODEL 800	7973 M CLEAR/PLAIN	1	2000 x 747mm
	MODEL 900	7972 M CLEAR/PLAIN	1	2000 x 847mm
*	18 ENTRANCE SIDE PANEL GLASS			
	MODEL 800	7979 M CLEAR/PLAIN	1	2000 x 740mm
	MODEL 900	7978 M CLEAR/PLAIN	1	2000 x 840mm

NWSR- SC PARTS KIT 6034 AF LH OR 6035 AF RH		
DESCRIPTION	PART No.	QTY
* CORNER BRACKET LH	5871 A SILVER	1
* CORNER BRACKET RH	5878 A SILVER	1
* INSERT FOR CORNER BRACKET	5879 AF	2
* CORNER BRACKET GASKET (10mm)	5877 BLACK	1
* CORNER BRACKET GASKET	5876 BLACK	1
* GLASS KEY HOLE INSERT	5860 WHITE	2
* M5 x 12 CSK SKT SCREW	1411 CHROME	2
* WALL MOUNT TOP CAP	5869 A SILVER	1
* CORNER EXTRUSION TOP CAP LH	5870 A SILVER	1
* CORNER EXTRUSION TOP CAP RH	5868 A SILVER	1
* ENTRANCE PANEL TRAY CLAMP	5884 A SILVER	1
* TRAY GLASS CLAMP GASKET	5886 CLEAR	1
* GLASS CLAMP	5881 AF	1
* M4 x10 SKT SET SCREW	1295 A SILVER	1
* M6 x12 SKT BUTTON HEAD SCREW	1418 A SILVER	1
* TRAY CLAMP COVER CAP	5885 A SILVER	1
* GLASS LEVELING BLOCK	5887 CLEAR	3
* M4 x 8 CSK SKT SCREW	1499 A SILVER	1
* WALL PLUG	1818 AF	4
* No.8 x 32 PAN HEAD SELF TAP SCREW	1471 A SILVER	4
* INSTALLATION INSTRUCTIONS	0968 AF	1
* GUARANTEE BOOKLET	1061 AF	1

NWSC PARTS LIST

ILLUSTRATION SHOWS LH MODEL



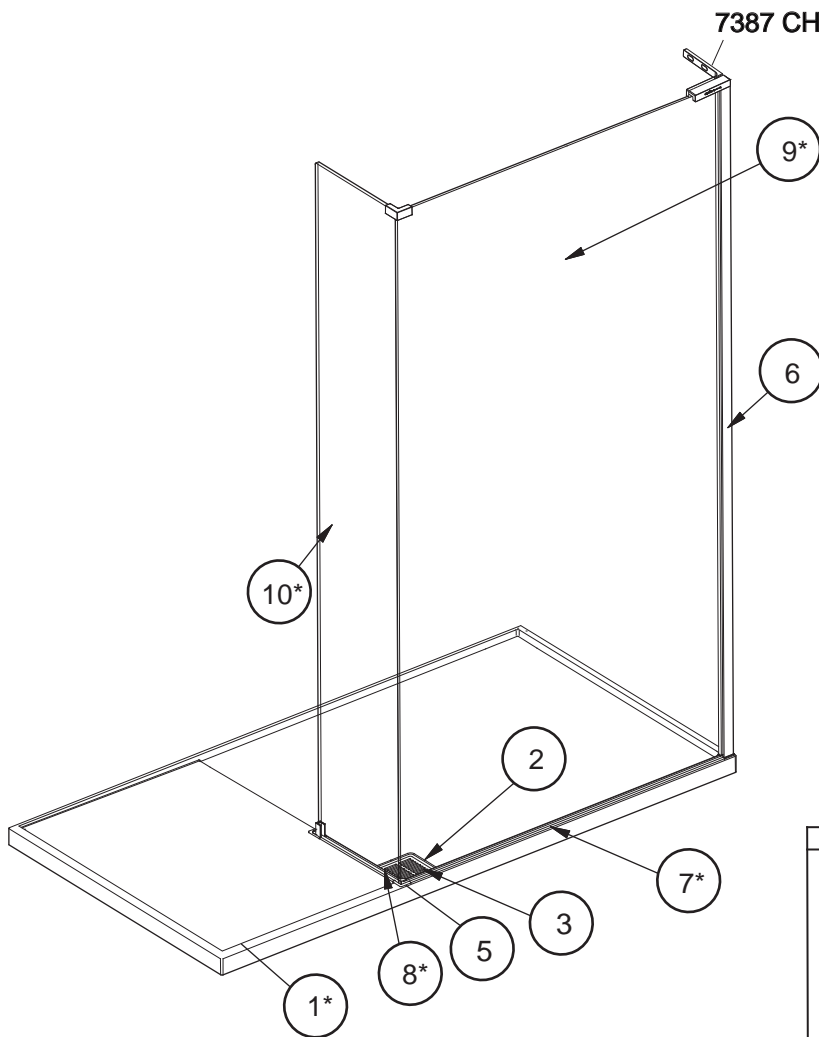
* ITEM VARIES DEPENDING ON MODEL

PARTS LIST				
ITEM	DESCRIPTION	PART NUMBER	QTY	LENGTH
*	1 NWSC 1700 X 900 LH		1	
	NWSC 1700 X 900 RH		1	
	NWSC 1700 X 800 LH		1	
	NWSC 1700 X 800 RH		1	
	NWSC 1500 X 900 LH		1	
	NWSC 1500 X 900 RH		1	
*	2 SQUARE WASTE FLANGE	5861 A SILVER	1	
	3 SQUARE TRAY GRILL	7491 A SILVER	1	
	4 FAST FLOW WASTE WITH 70mm FLANGE	RR0000402	1	
	5 CORNER TRAY CAP	5882 A SILVER	2	
	6 CORNER EXTRUSION	5790 A SILVER	1	1997mm
	7 M4 X 8 SOCKET SET SCREW	1360 A SILVER	2	
*	8 M4 X 14 SOCKET SET SCREW	1279 A SILVER	2	
	9 WALL MOUNT	5786 A SILVER	1	1982mm
	10 CORNER PANEL TRAY GASKET			
	MODEL 800	2329 WHITE	1	751mm
	MODEL 900	2330 WHITE	1	851mm
*	11 FRONT PANEL TRAY GASKET			
	MODEL 1500	2327 WHITE	1	909mm
	MODEL 1700	2328 WHITE	1	1060mm
*	12 ENTRANCE PANEL TRAY GASKET			
	MODEL 800	2331 WHITE	1	257mm
	MODEL 900	2332 WHITE	1	357mm
*	13 CORNER FRONT PANEL GLASS			
	MODEL 1500	7970 M CLEAR/PLAIN	1	2000 x 928mm
	MODEL 1700	7971 M CLEAR/PLAIN	1	2000 x 1078mm
*	14 ENTRANCE PANEL GLASS			
	MODEL 800	7977 M CLEAR/PLAIN	1	2000 x 234mm
	MODEL 900	7976 M CLEAR/PLAIN	1	2000 x 334mm
*	15 CORNER PANEL GLASS			
	MODEL 800	7973 M CLEAR/PLAIN	1	2000 x 747mm
	MODEL 900	7972 M CLEAR/PLAIN	1	2000 x 847mm

NWSR- SC PARTS KIT 6034 AF LH OR 6035 AF RH		
DESCRIPTION	PART No.	QTY
* CORNER BRACKET LH	5871 A SILVER	1
* CORNER BRACKET RH	5878 A SILVER	1
INSERT FOR CORNER BRACKET	5879 AF	2
CORNER BRACKET GASKET (10mm)	5877 BLACK	1
CORNER BRACKET GASKET	5876 BLACK	1
GLASS KEY HOLE INSERT	5860 WHITE	2
M5 x 12 CSK SKT SCREW	1411 CHROME	2
WALL MOUNT TOP CAP	5869 A SILVER	1
* CORNER EXTRUSION TOP CAP LH	5870 A SILVER	1
* CORNER EXTRUSION TOP CAP RH	5868 A SILVER	1
ENTRANCE PANEL TRAY CLAMP	5884 A SILVER	1
TRAY GLASS CLAMP GASKET	5886 CLEAR	1
GLASS CLAMP	5881 AF	1
M4 x10 SKT SET SCREW	1295 A SILVER	1
M6 x12 SKT BUTTON HEAD SCREW	1418 A SILVER	1
TRAY CLAMP COVER CAP	5885 A SILVER	1
GLASS LEVELING BLOCK	5887 CLEAR	3
M4 x 8 CSK SKT SCREW	1499 A SILVER	1
WALL PLUG	1818 AF	4
No.8 x 32 PAN HEAD SELF TAP SCREW	1471 A SILVER	4
INSTALLATION INSTRUCTIONS	0968 AF	1
GUARANTEE BOOKLET	1061 AF	1

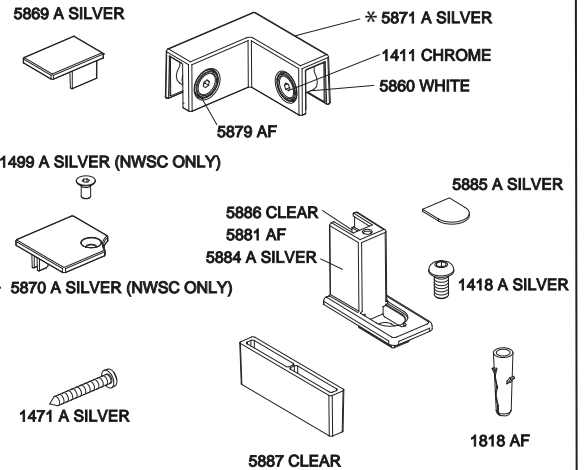
NWSR/NWST PARTS LIST

ILLUSTRATION SHOWS LH MODEL



* ITEM VARIES DEPENDING ON MODEL

NWSR- SC PARTS KIT 6034 AF LH OR 6035 AF RH

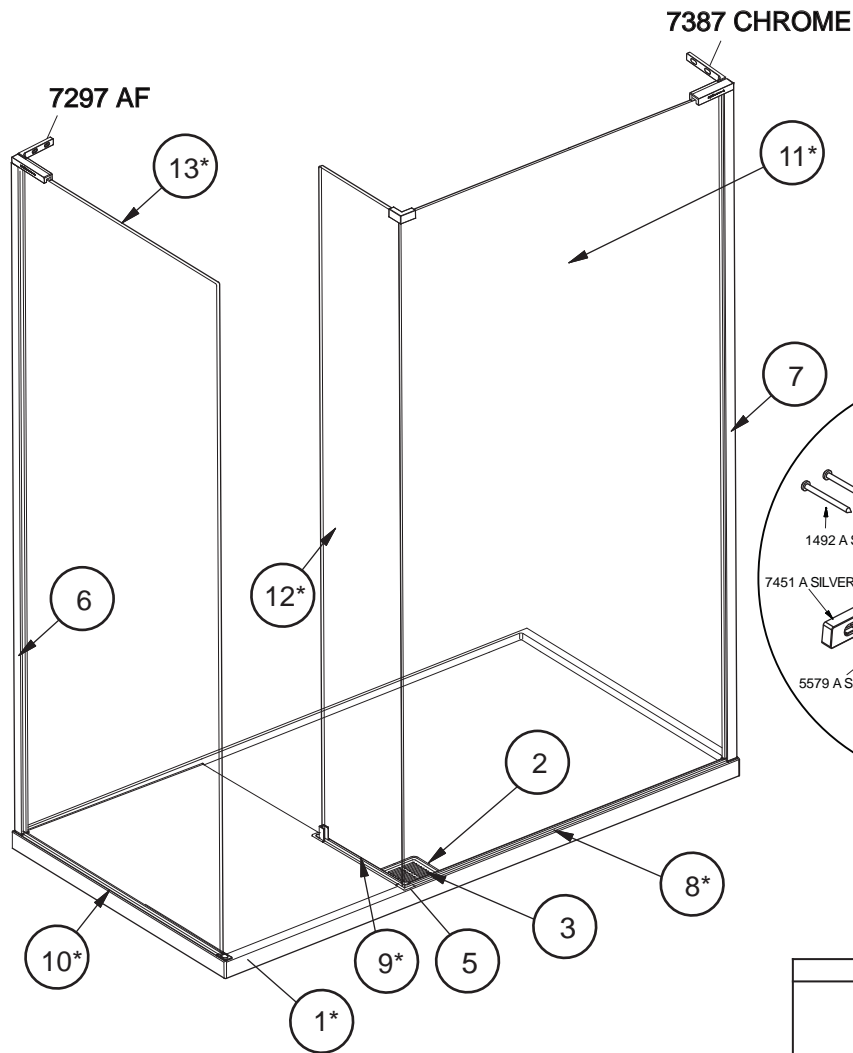


PARTS LIST				
ITEM	DESCRIPTION	PART NUMBER	QTY	LENGTH
*	1 NWSR 1500 X 800 LH		1	
	NWSR 1500 X 800 RH		1	
	NWSR 1700 X 900 LH		1	
	NWSR 1700 X 900 RH		1	
	NWSR 1700 X 800 LH		1	
	NWSR 1700 X 800 RH		1	
	NWSR 1500 X 900 LH		1	
	NWSR 1500 X 900 RH		1	
	2 SQUARE WASTE FLANGE	5861 A SILVER	1	
	3 SQUARE TRAY GRILL	7491 A SILVER	1	
	4 FAST FLOW WASTE WITH 70mm FLANGE	RR0000402	1	
	5 CORNER TRAY CAP	5882 A SILVER	1	
*	6 WALL MOUNT	5786 A SILVER	1	1982mm
	* FRONT PANEL TRAY GASKET			
*	MODEL 1500	2327 WHITE	1	909mm
	MODEL 1700	2328 WHITE	1	1060mm
	* 8 ENTRANCE PANEL TRAY GASKET			
*	MODEL 800	2331 WHITE	1	257mm
	MODEL 900	2332 WHITE	1	357mm
*	* 9 FRONT PANEL GLASS			
	MODEL 1500	7970 M CLEAR/PLAIN	1	2000 x 923mm
	MODEL 1700	7971 M CLEAR/PLAIN	1	2000 x 1068mm
*	* 10 ENTRANCE PANEL GLASS			
	MODEL 800	7977 M CLEAR/PLAIN	1	2000 x 234mm
	MODEL 900	7976 M CLEAR/PLAIN	1	2000 x 334mm

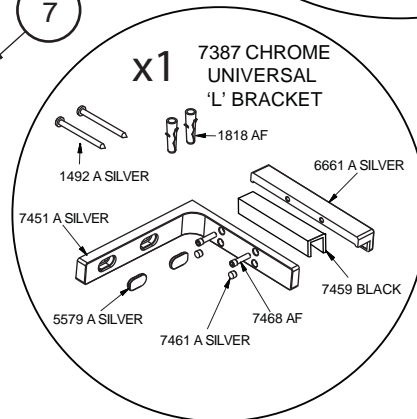
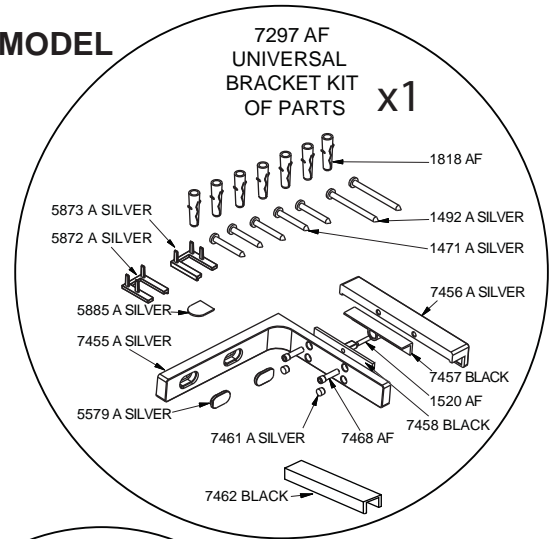
	DESCRIPTION	PART No.	QTY
*	CORNER BRACKET LH	5871 A SILVER	1
*	CORNER BRACKET RH	5878 A SILVER	1
	INSERT FOR CORNER BRACKET	5879 AF	2
	CORNER BRACKET GASKET (10mm)	5877 BLACK	1
	CORNER BRACKET GASKET	5876 BLACK	1
	GLASS KEY HOLE INSERT	5860 WHITE	2
	M5 x 12 CSK SKT SCREW	1411 CHROME	2
	WALL MOUNT TOP CAP	5869 A SILVER	1
*	CORNER EXTRUSION TOP CAP LH	5870 A SILVER	1
*	CORNER EXTRUSION TOP CAP RH	5868 A SILVER	1
	ENTRANCE PANEL TRAY CLAMP	5884 A SILVER	1
	TRAY GLASS CLAMP GASKET	5886 CLEAR	1
	GLASS CLAMP	5881 AF	1
	M4 x10 SKT SET SCREW	1295 A SILVER	1
	M6 x12 SKT BUTTON HEAD SCREW	1418 A SILVER	1
	TRAY CLAMP COVER CAP	5885 A SILVER	1
	GLASS LEVELING BLOCK	5887 CLEAR	3
	M4 x 8 CSK SKT SCREW	1499 A SILVER	1
	WALL PLUG	1818 AF	4
	No.8 x 32 PAN HEAD SELF TAP SCREW	1471 A SILVER	4
	INSTALLATION INSTRUCTIONS	0968 AF	1
	GUARANTEE BOOKLET	1061 AF	1

NWCC PARTS LIST

ILLUSTRATION SHOWS LH MODEL



* ITEM VARIES DEPENDING ON MODEL



* ITEM VARIES DEPENDING ON MODEL

PARTS LIST				
ITEM	DESCRIPTION	PART NUMBER	QTY	LENGTH
*	1 NWCC 1700 X 900 LH		1	
	NWCC 1700 X 900 RH		1	
	NWCC 1700 X 800 LH		1	
	NWCC 1700 X 800 RH		1	
	NWCC 1500 X 900 LH		1	
	NWCC 1500 X 900 RH		1	
	2 SQUARE WASTE FLANGE	5861 A SILVER	1	
	3 SQUARE TRAY GRILL	7491 A SILVER	1	
	4 FAST FLOW WASTE WITH 70mm FLANGE	RR0000402	1	
	5 CORNER TRAY CAP	5882 A SILVER	2	
	6 END PANEL MOUNT	5794 A SILVER	1	1979mm
	7 WALL MOUNT	5786 A SILVER	1	1982mm
*	8 FRONT PANEL TRAY GASKET			
	MODEL 1500	2327 WHITE	1	909mm
	MODEL 1700	2328 WHITE	1	1060mm
*	9 ENTRANCE PANEL TRAY GASKET			
	MODEL 800	2331 WHITE	1	257mm
	MODEL 900	2332 WHITE	1	357mm
*	10 ENTRANCE SIDE PANEL TRAY GASKET			
	MODEL 800	2325 WHITE	1	759mm
	MODEL 900	2326 WHITE	1	859mm
*	11 FRONT PANEL GLASS			
	MODEL 1500	7970 M CLEAR/PLAIN	1	2000 x 923mm
	MODEL 1700	7971 M CLEAR/PLAIN	1	2000 x 1068mm
*	12 ENTRANCE PANEL GLASS			
	MODEL 800	7977 M CLEAR/PLAIN	1	2000 x 234mm
	MODEL 900	7976 M CLEAR/PLAIN	1	2000 x 334mm
*	13 ENTRANCE SIDE PANEL GLASS			
	MODEL 800	7979 M CLEAR/PLAIN	1	2000 x 740mm
	MODEL 900	7978 M CLEAR/PLAIN	1	2000 x 840mm

NWSR- SC PARTS KIT 6034 AF LH OR 6035 AF RH		
DESCRIPTION	PART No.	QTY
* CORNER BRACKET LH	5871 A SILVER	1
* CORNER BRACKET RH	5878 A SILVER	1
INSERT FOR CORNER BRACKET	5879 AF	2
CORNER BRACKET GASKET (10mm)	5877 BLACK	1
CORNER BRACKET GASKET	5876 BLACK	1
GLASS KEY HOLE INSERT	5860 WHITE	2
M5 x 12 CSK SKT SCREW	1411 CHROME	2
WALL MOUNT TOP CAP	5869 A SILVER	1
* CORNER EXTRUSION TOP CAP LH	5870 A SILVER	1
* CORNER EXTRUSION TOP CAP RH	5868 A SILVER	1
ENTRANCE PANEL TRAY CLAMP	5884 A SILVER	1
TRAY GLASS CLAMP GASKET	5886 CLEAR	1
GLASS CLAMP	5881 AF	1
M4 x10 SKT SET SCREW	1295 A SILVER	1
M6 x12 SKT BUTTON HEAD SCREW	1418 A SILVER	1
TRAY CLAMP COVER CAP	5885 A SILVER	1
GLASS LEVELING BLOCK	5887 CLEAR	3
M4 x 8 CSK SKT SCREW	1499 A SILVER	1
WALL PLUG	1818 AF	4
No.8 x 32 PAN HEAD SELF TAP SCREW	1471 A SILVER	4
INSTALLATION INSTRUCTIONS	0968 AF	1
GUARANTEE BOOKLET	1061 AF	1