

matki

EAUZONE PLUS

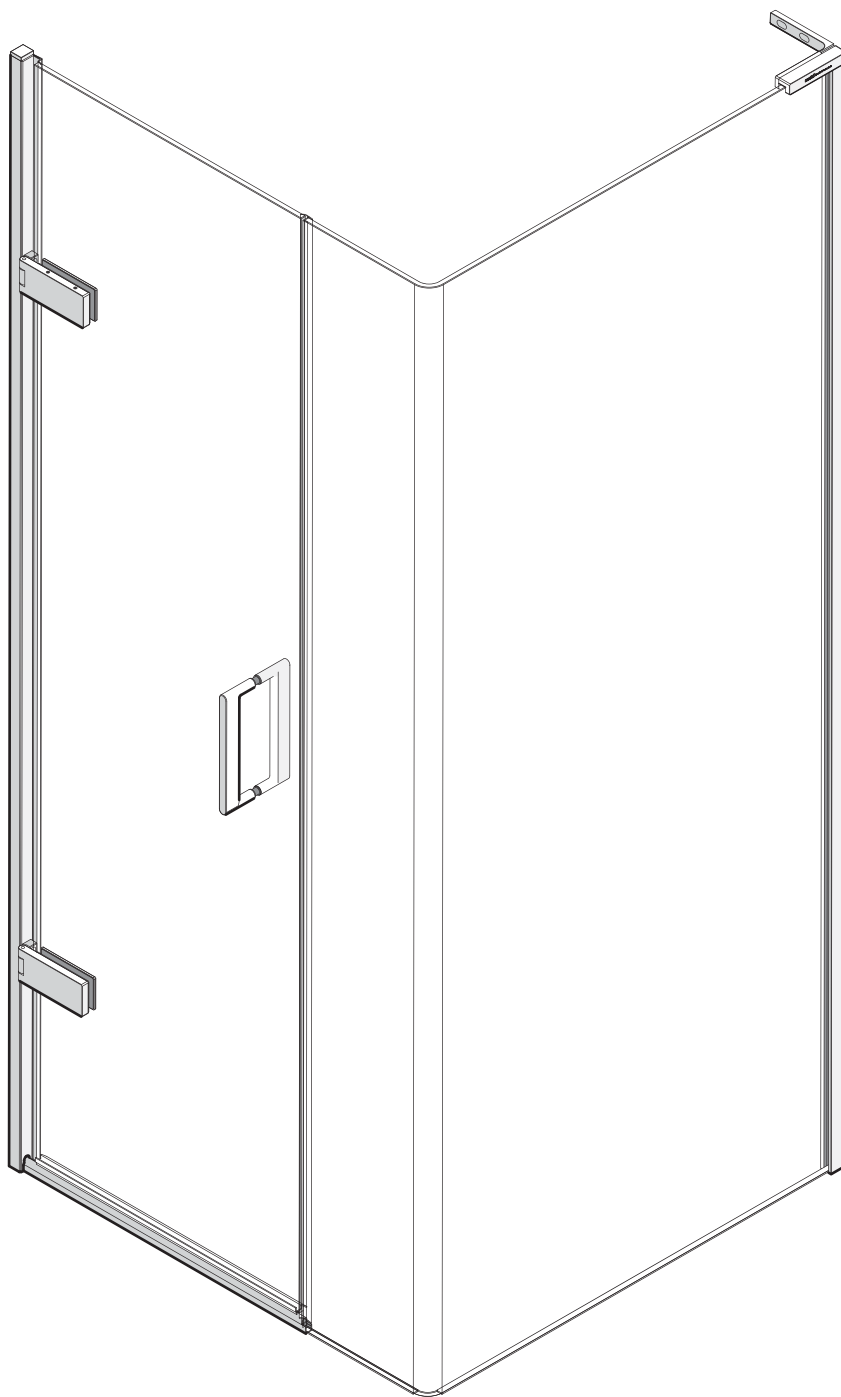
EWCL - HINGED DOOR FROM WALL,
WITH RADIUS 20 PANEL FOR CORNER

INSTALLATION

PARTS LIST

BRITISH PATENT NO:2470778

Please pass the
Guarantee Card
to the customer.



CE

matki

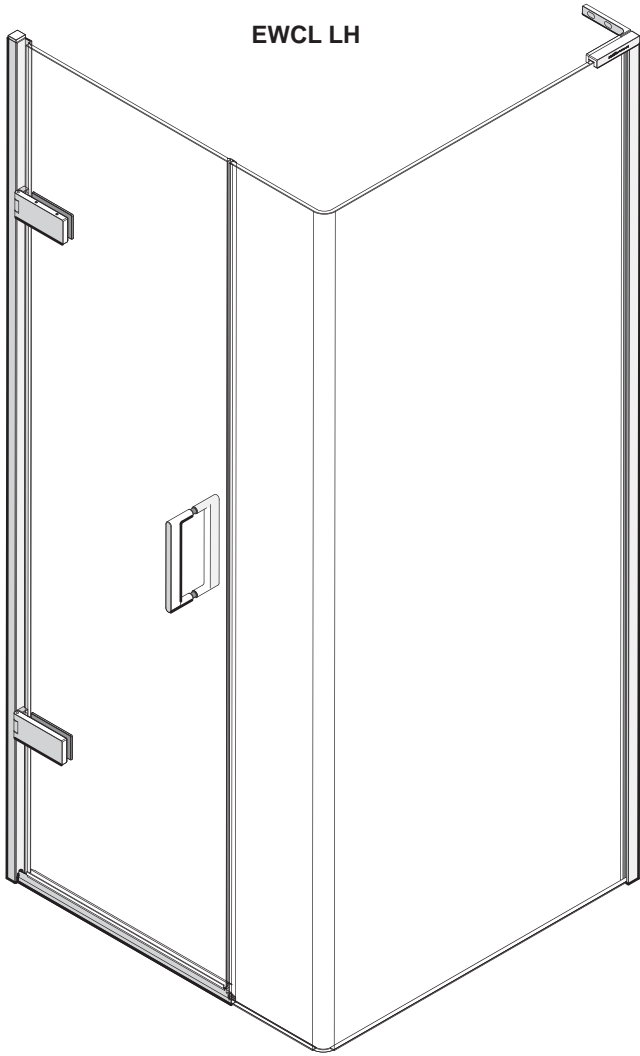
13

Matki PLC, Churchward Road, Yate,
Bristol BS37 5PL

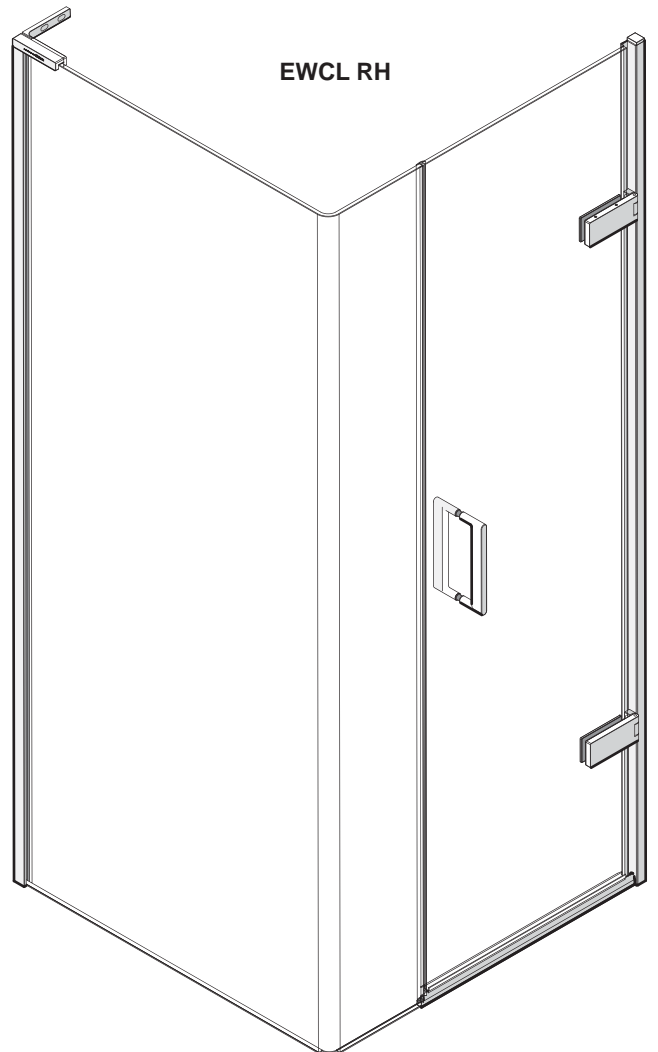
EN 14428:2008+A1

MATKI PLC, CHURCHWARD ROAD, YATE, BRISTOL, BS37 5PL
TELEPHONE:01454 322 888 (CUSTOMER SERVICES) EMAIL: techsupport@matki.co.uk

EWCL LH



EWCL RH



IMPORTANT

TOOLS REQUIRED

Masonry Drill bit 6mm, Tape Measure, Screw Drivers, Safety Glasses, Allen Keys, Electric Drill, Level, Pencil, Adjustable Spanners, Non Slip Gloves

Before disposing of carton and/or commencing assembly, please check all the parts to ascertain that none are missing and they are all undamaged. No claim for missing/damaged parts will be accepted once the packing carton has been disposed of and/or assembly has commenced.

In case of query contact your Stockist with details of model number and details of serial number.

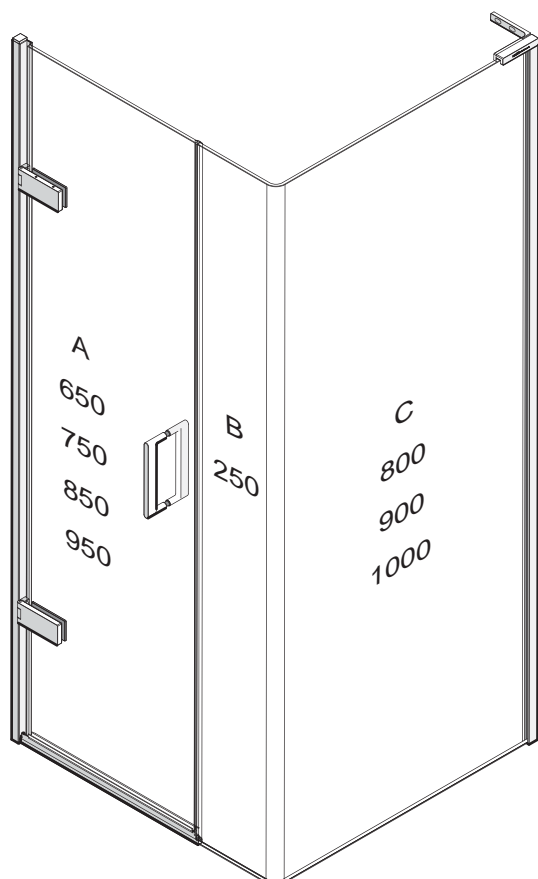
PREPARATION IMPORTANT

1. Please read complete installation instructions before fitting the Enclosure and Tray (if fitting).
2. We recommend that two people are available for fitting of Side panel and Door, Stage 6+9. The **Eauzone Plus** range is **10mm Glass** construction. Large glass panels are very heavy. We recommend the use of Safety glasses and Non slip gloves when handling the glass panels.
3. Ensure that the product can be **fixed** to a **solid masonry wall** or suitable **timber stud work grade C16/C24** in the area behind the Wall frames and Panel fixing brackets.
4. Shower trays or tiled floors **must be absolutely level** where enclosures are fitted
5. If fitting a tray we recommend a **drainage test** is carried out before the tray is tiled in position.
6. The assembly should be installed onto a waterproof wall covering and installed after the Tray and wall coverings are in place. Where Tiling lips are provided Trays should be let into the Wall with the Tiling lip flush with the wall to allow the Tiling to overlap the Tiling lip.
7. Seal between tray and tiles. Remove any excess sealant from the area/joint between the tray and the tiles where the Wall Mount is to be fitted. This will ensure the Wall mount fits correctly to the wall and tray/or tiled floor.

CAUTION: TEMPERED GLASS CANNOT BE CUT, POLISHED METAL AND CHROME CAN BE SCRATCHED. CAREFULLY REMOVE ASSEMBLY FROM CARTON, DO NOT PLACE GLASS ON HARD FLOOR OR EXPOSE EDGES TO IMPACT.

DIMENSIONS

Dimensions are approximate.
Images show LH Hinge Door
installation. Reverse for RH.



DOOR + CLOSURE PANEL

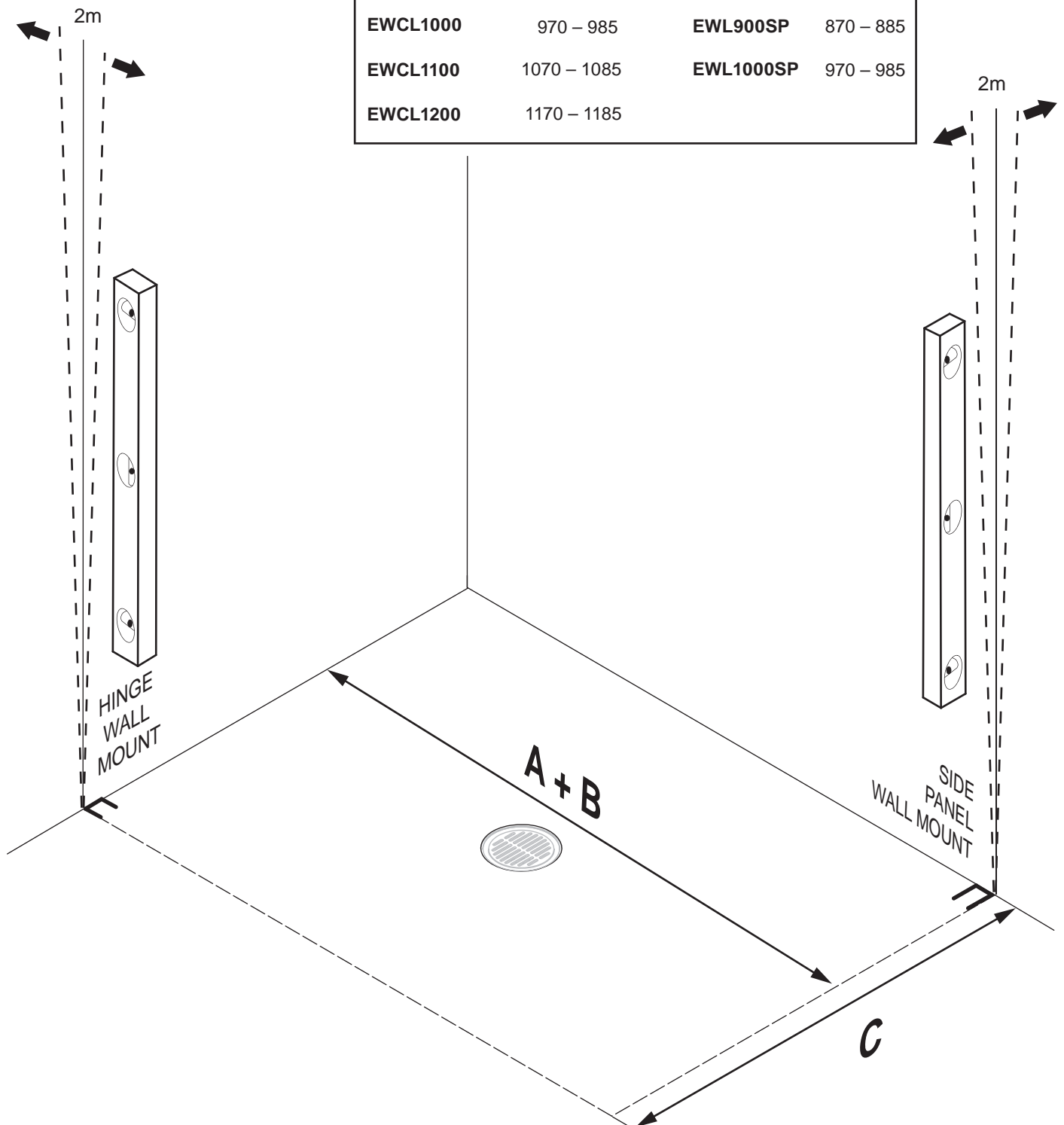
MODEL	A	B	Adjustment range
EWCL900	650	250	870 – 885 mm
EWCL1000	750	250	970 – 985 mm
EWCL1100	850	250	1070 – 1085 mm
EWCL1200	950	250	1170 – 1185 mm

SIDE PANEL

MODEL	C	Adjustment range
EWL800SP	800	770 – 785 mm
EWL900SP	900	870 – 885 mm
EWL1000SP	1000	970 – 985 mm

STAGE 1

A + B		C	
EWCL900	870 – 885	EWL800SP	770 – 785
EWCL1000	970 – 985	EWL900SP	870 – 885
EWCL1100	1070 – 1085	EWL1000SP	970 – 985
EWCL1200	1170 – 1185		



This stage is describing the placement of the Wall mounts.

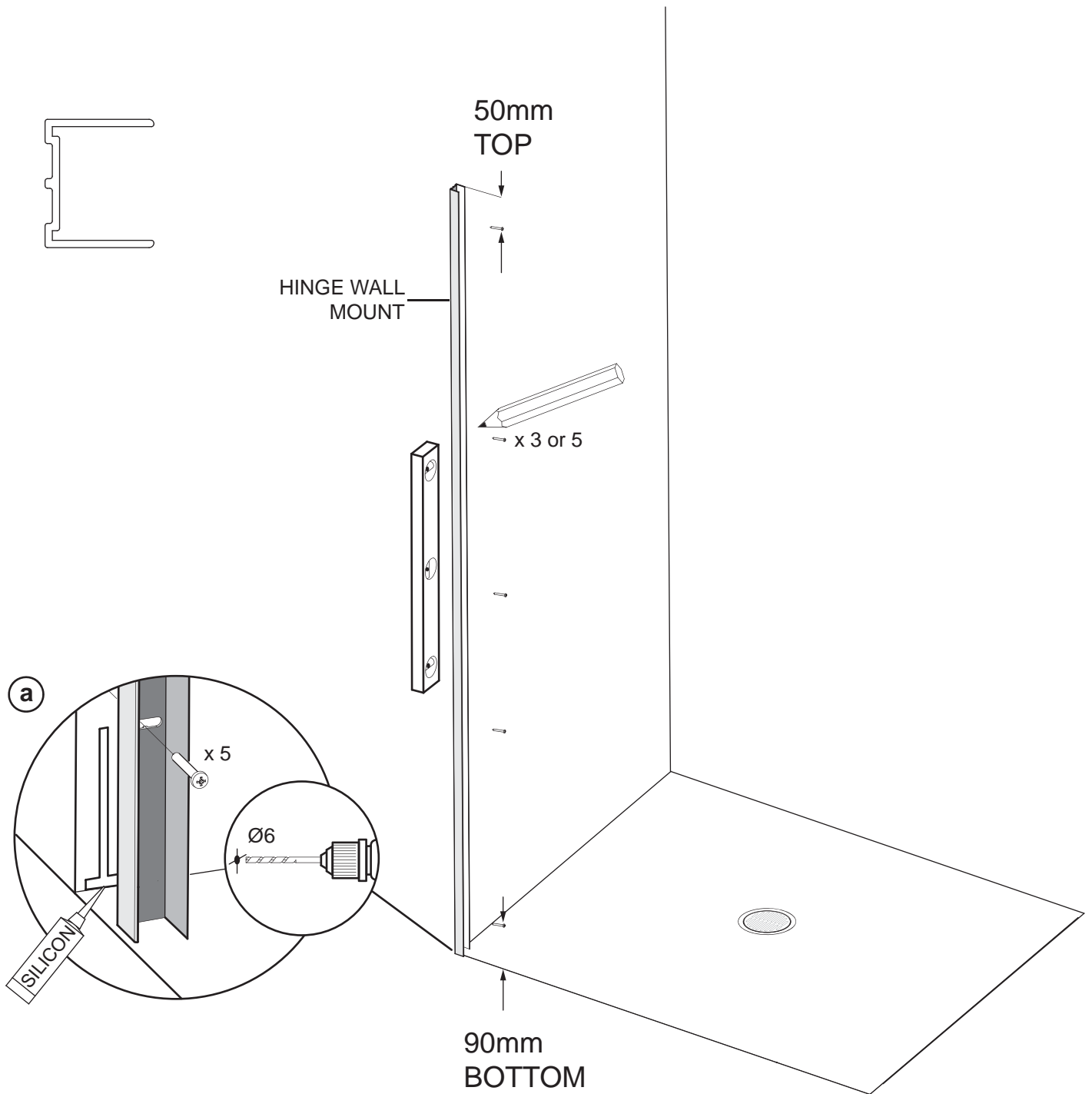
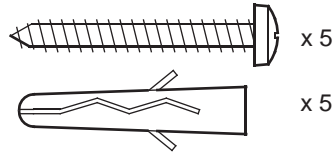
The Eauzone surround has adjustable Wall Mounts to compensate for out of plumb walls and overall size adjustments. There is 15mm of adjustment in both the Hinge wall mount and Side panel wall mount. If walls are out of plumb ensure the placement of wall mounts allows for the out of plumb walls and size requirements within the product adjustment range stated.

Important: Check the walls for upright before positioning the wall mounts. If the wall is leaning **outward** at the top adjust the dimension inwards to fit within the adjustment range. If the wall is leaning **inwards** at the top adjust the dimension outwards to fit within the adjustment range.

Measure and mark the distance from the Wall to the outside face of the wall mount. The table of dimensions show overall product width to outside of Wall mounts.

STAGE 2

LH CORNER

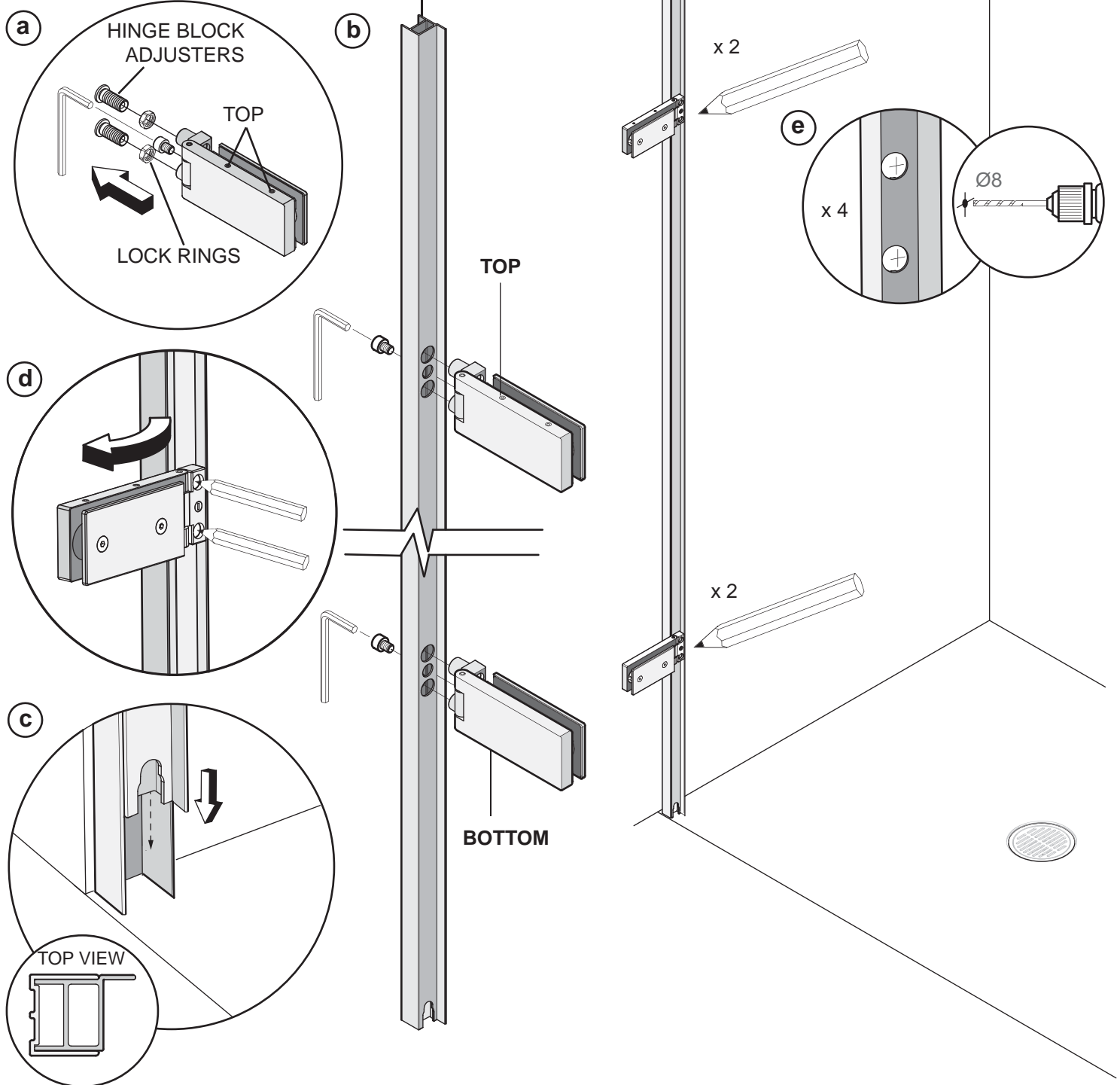


This stage is describing the fitting of the Hinge wall mount

a. Drill 5 x fixing holes (minimum 3) in the wall and insert Wall plugs. Clean area and apply Silicon Sealant to the area behind the Hinge wall mount between the tray and tiles and 100mm up the Wall, central to the width of the Hinge wall mount. Fit the Hinge wall mount using the No.8 x 32mm Pan Head Screws.

STAGE 3

LH CORNER



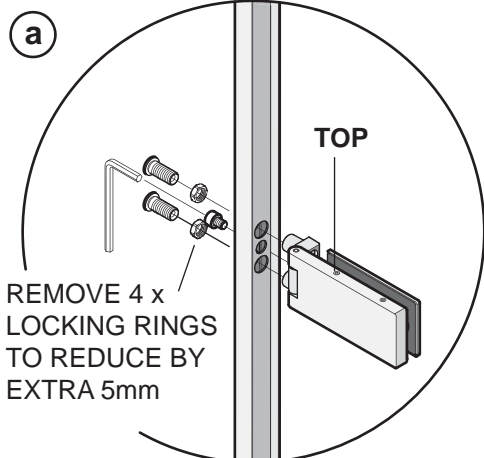
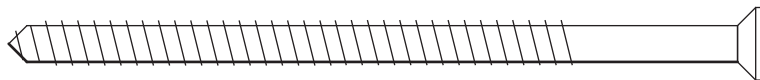
This stage is describing the markings and positioning of the Wall Hinge frame.

- Remove from both of the Hinges and set aside the 4 x Hinge block adjusters and 4 x Adjuster lock rings.
- Fit the Hinges to the Wall hinge frame using the M8 x 10 Socket cap screws. The Hinges are handed top and bottom, ensure the Socket set screws are visible on the top of the top Hinge and on the underside of the lower Hinge.
- Fit the Wall hinge frame into the Hinge wall mount.
- Rotate the hinges into the open position. Carefully mark the centre of the holes for the Hinge fixings onto the wall. Remove the Wall hinge frame and set aside.
- Drill and fit the 4 x **No.10** Wall Plugs provided.

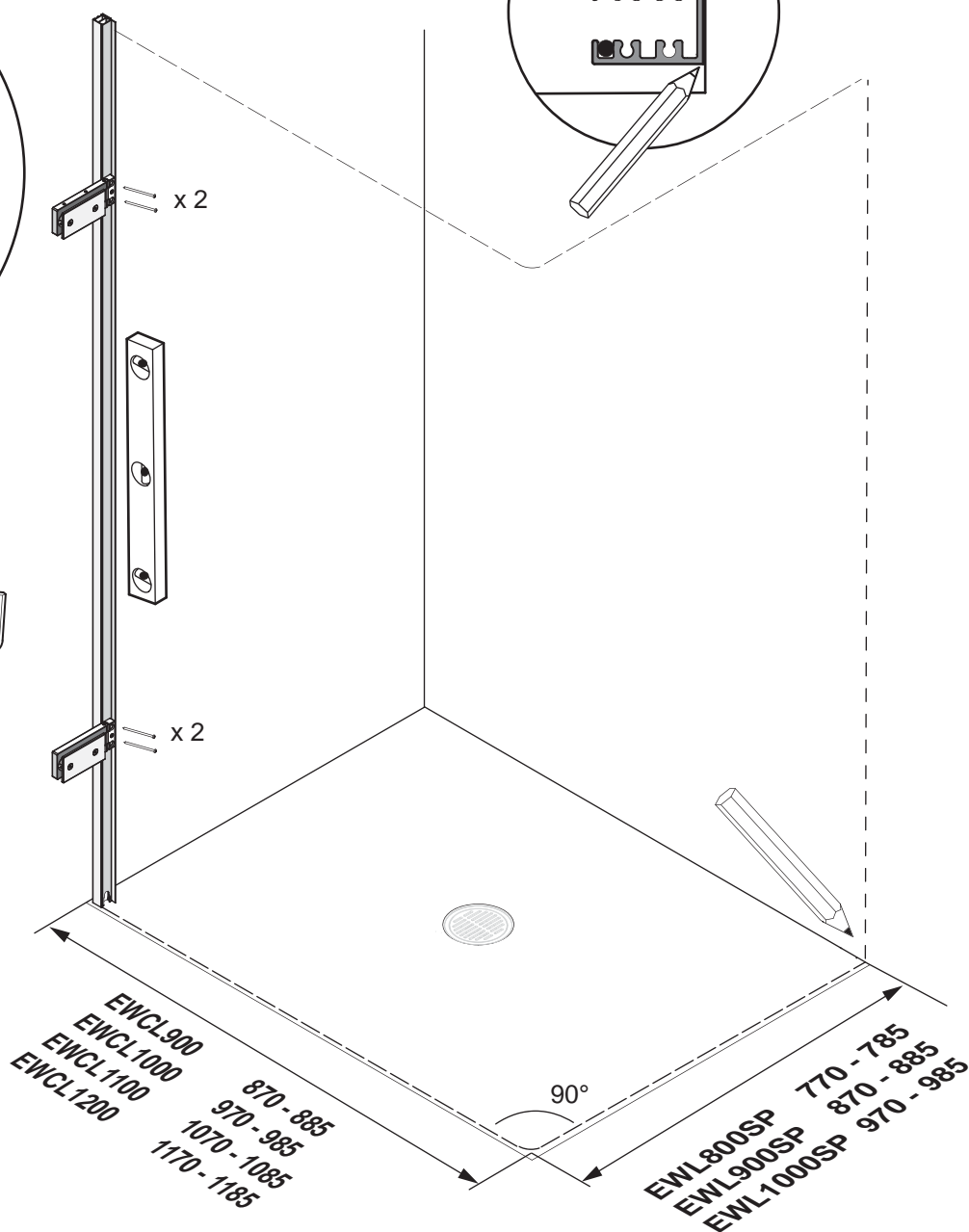
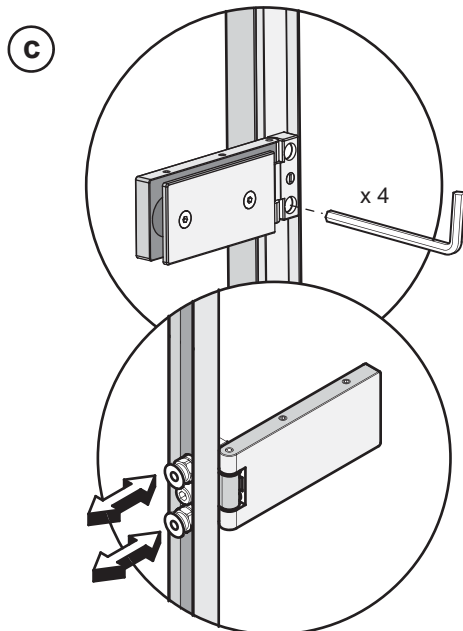
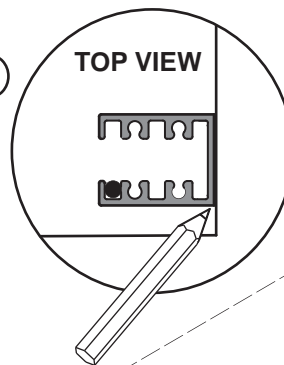
STAGE 4

LH CORNER

x 4



b



This stage is describing the fitting and adjustment of the Wall hinge frame.

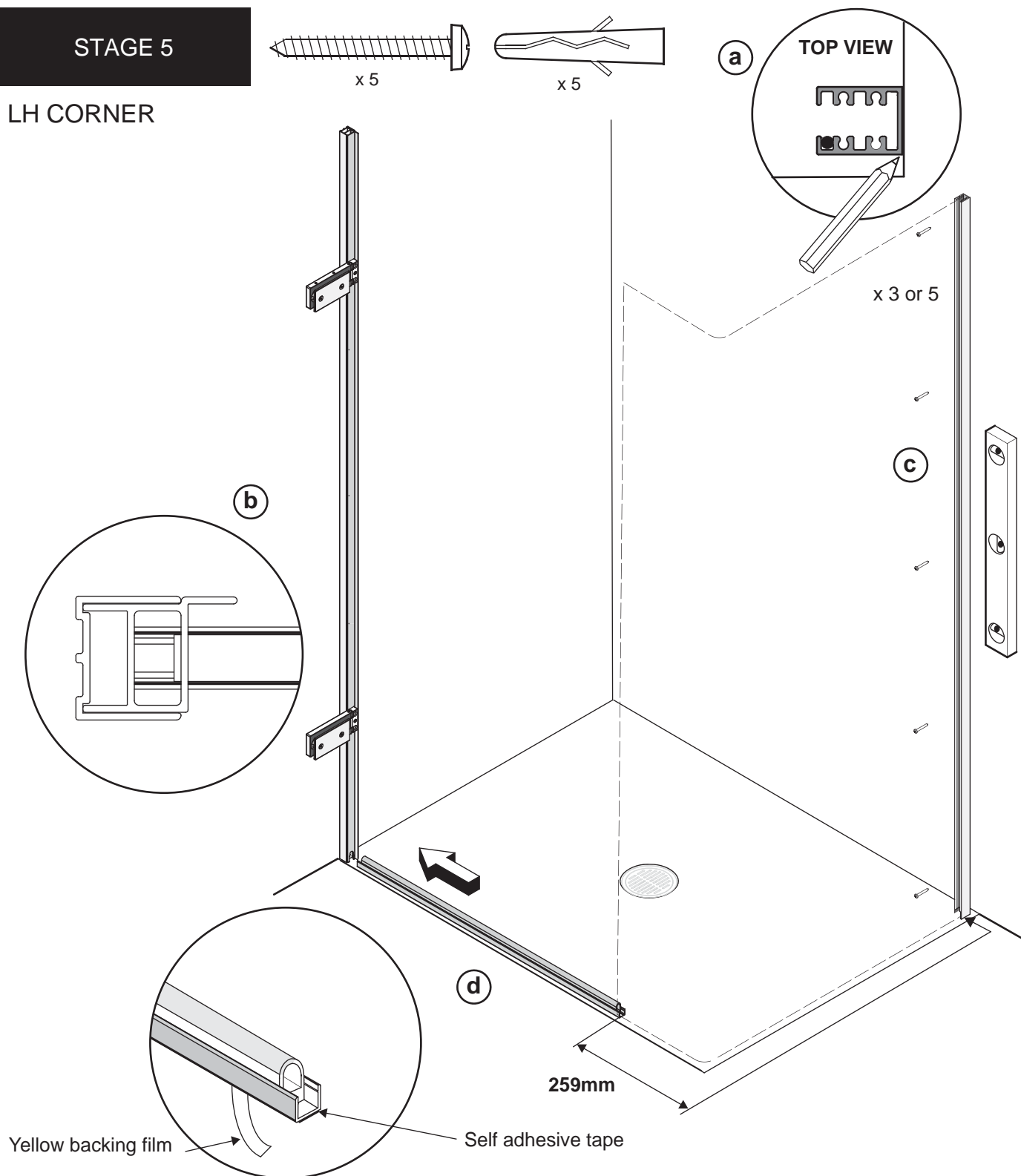
a. Remove the Wall hinge frame and re-fit the 4 x Hinge block adjusters and 4 x Adjuster lock rings to the back of the Hinges. Re-fit the Wall hinge frame into the Hinge wall mount.

b. Using a level ensure the Wall hinge frame is upright. **If adjustment is needed, the Wall hinge frame can be adjusted out by 15mm.**

c. To adjust out the Hinge adjuster - Using an Allen key wind out the Hinge block adjusters to space off the Wall hinge frame. The locking nuts should be removed on adjustment below 5mm (a).
Plumb for upright, fit the 4 x No.10 x 100 Wall screws through the hinges to fix in position.

STAGE 5

LH CORNER



This stage is describing the fitting of the Side panel wall mount.

a. Position the Side panel wall mount in the position marked on the previous stage.

b. Fit the threshold into the cut out at the base of the hinge adjuster column, push fully in until it stops. **As a guide** the dimension from the end of the threshold to the outside face of the wall mount is 259mm. Adjust the Wall hinge frame if required to re-position the threshold and side panel wall mount.

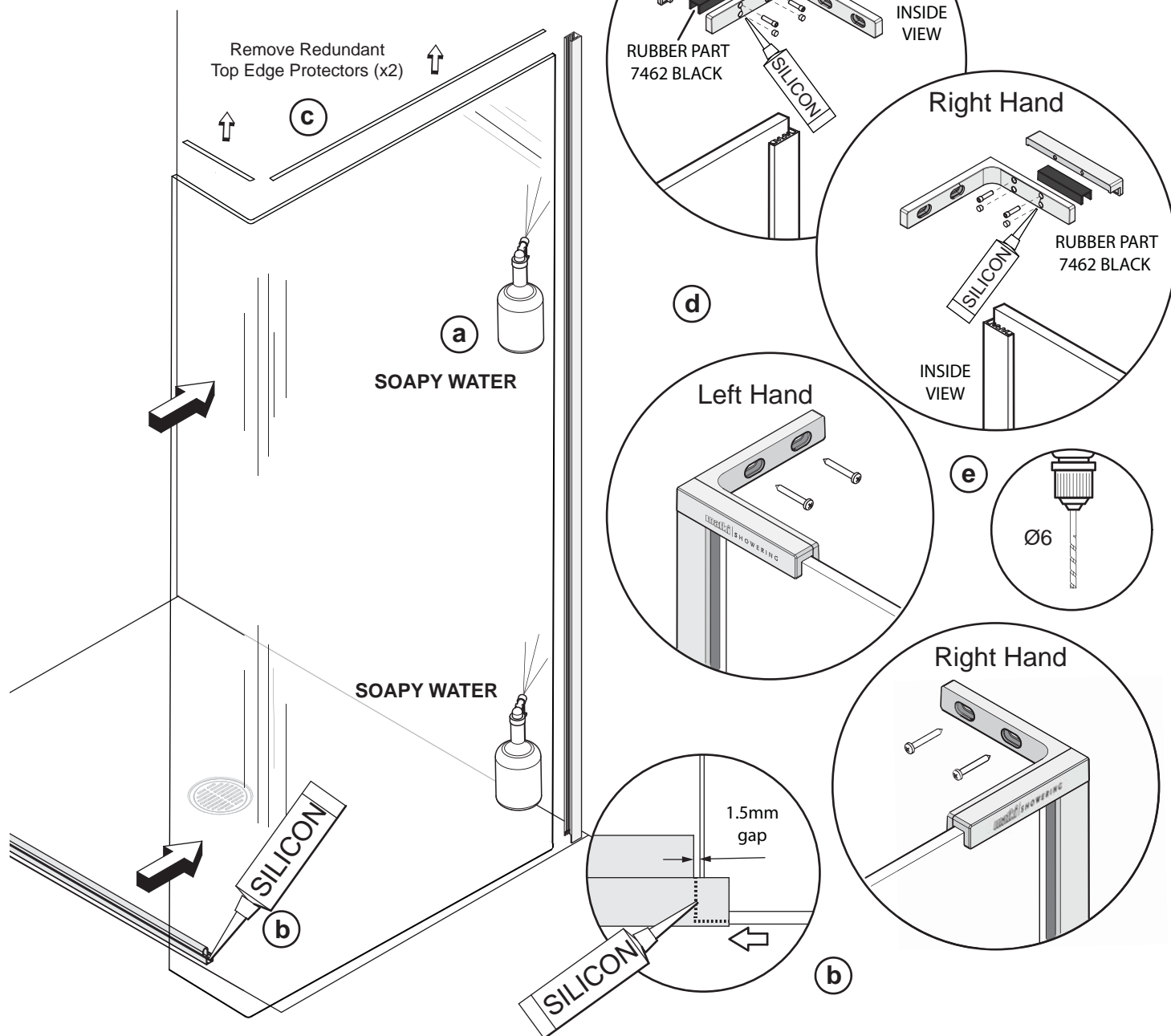
c. Drill 5 x fixing holes in the wall (minimum 3) and insert Wall plugs. Clean the area and apply Silicon Sealant to the area behind the Wall mount between the tray and tiles and 100mm up the Wall, central to the width of the Wall mount. Fit the Wall mount using the No.8 x 32mm Pan Head Screws.

d. Self adhesive tape has been applied to the underside of the threshold to aid final positioning of the threshold. Before fitting the Side panel remove a small length of the Yellow backing film so that that it can be removed on final fixing.

STAGE 6



LH CORNER



This stage is describing the fitting of the Side panel glass. We recommend two people are available for this stage. The Panel Top Bracket is unhandled. To change the orientation of the bracket to suit your product; remove the screws, flip the inside 'L' Shaped part over and re-attach with the screws in the top holes to the respective LH/RH front plate.

a. Lightly wet the edge of the glass panel with soapy water. Gently lift, push and then lower the panel into the wall mount. Adjust the Side panel to align with the threshold.

b. Before fitting the Side panel glass to the threshold extrusion apply a spot of silicon in the base of the threshold. Leave a 1.5mm gap between the glass and the inner face of the threshold for the Closure vertical seal to slot down.

c. Remove the two top, redundant glass edge protectors (x2).

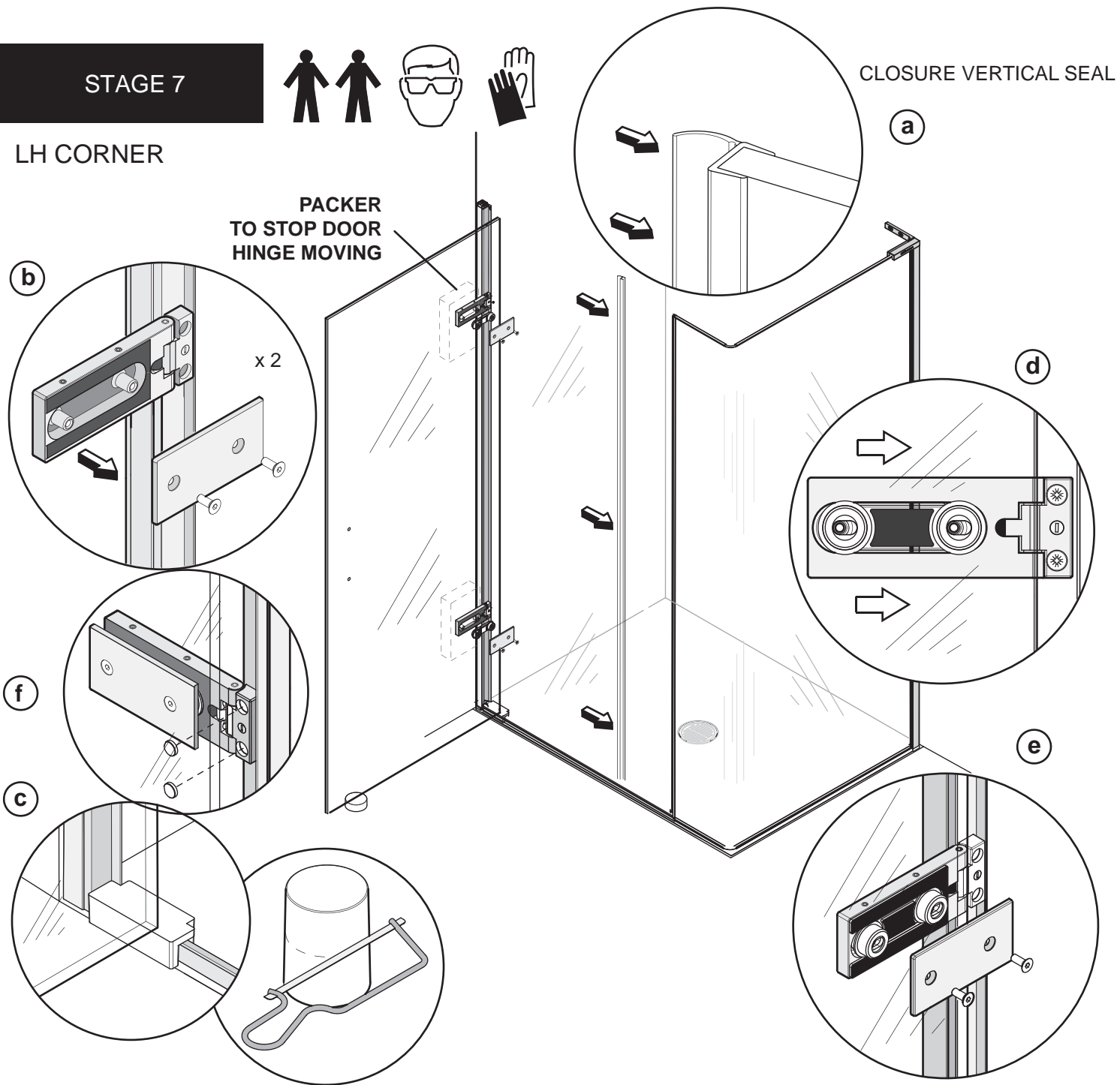
d. Fitting of Panel Top bracket: Fit the rubber 'U' shaped gasket onto the top edge of the glass with the grooved face of the gasket facing outwards. Fit the wall bracket over the glass and onto the top of the wall mount.

e. Mark the centre of the slotted holes in the wall bracket onto the wall. Remove the wall bracket and drill and fix the wall plugs. Fix the bracket to the wall using the No.8 x 50 Pan head screws. Clamp the bracket onto the glass by tightening the clamping screws on the inside of the bracket. Fit the clamping screw cover caps into the two unused holes on the inside of the wall bracket. Apply a small spot of silicon in the holes before fitting the caps.

STAGE 7



LH CORNER



This stage is describing the hanging of the Door.

a. Push fit the Closure vertical seal to the edge of the Side panel fitting down to the threshold in the 1.5mm gap (6d).

b. Remove and set aside the Hinge back plates.

Note: To stop the Hinges moving back towards the Wall when loading the Door, a packer (such as the White foam buffer used to protect the glass in the packaging) can be placed behind both of the Hinges.

c. Place the Door assembly block over the track on the Hinge side of the Door opening. The tubular Door support can be used to support the other end of the door. Measure and mark the Door support so that the top is parallel with the top of the Door assembly block. Cut to size as required using a Hacksaw. Note: Glass can break, please handle carefully and do not place on/against a hard surface.

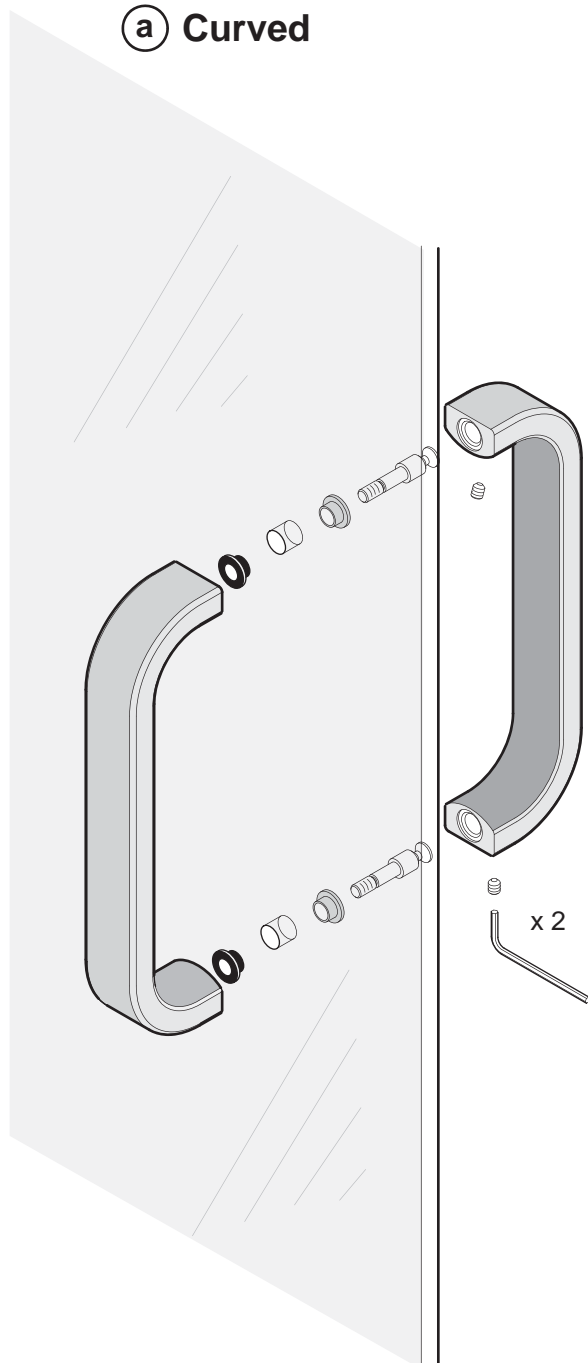
d. We recommend 2 people are available for this stage and the use of Safety glasses and Non slip gloves when handling glass panels - Carefully lift the Door onto the Hinges, ensuring the Adjustment blocks fitted to the glass are on the Hinge side. The Door support and assembly block will now help to align the Door glass with the Hinges. The door has left to right adjustment, push the Door glass fully towards the hinges (on minimum adjustment)

e. Re-fit the back plates.

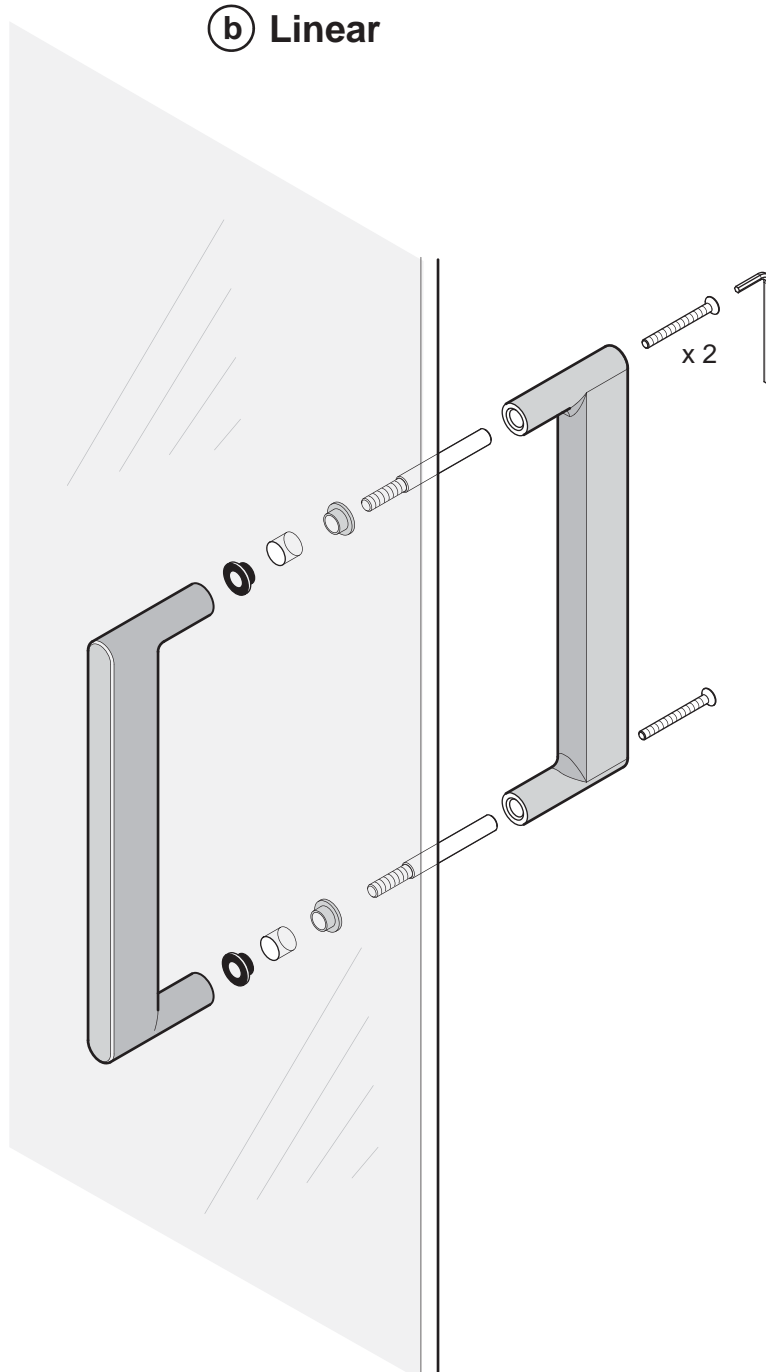
f. Fit 4 x Hinge screw covers.

STAGE 8

a Curved



b Linear

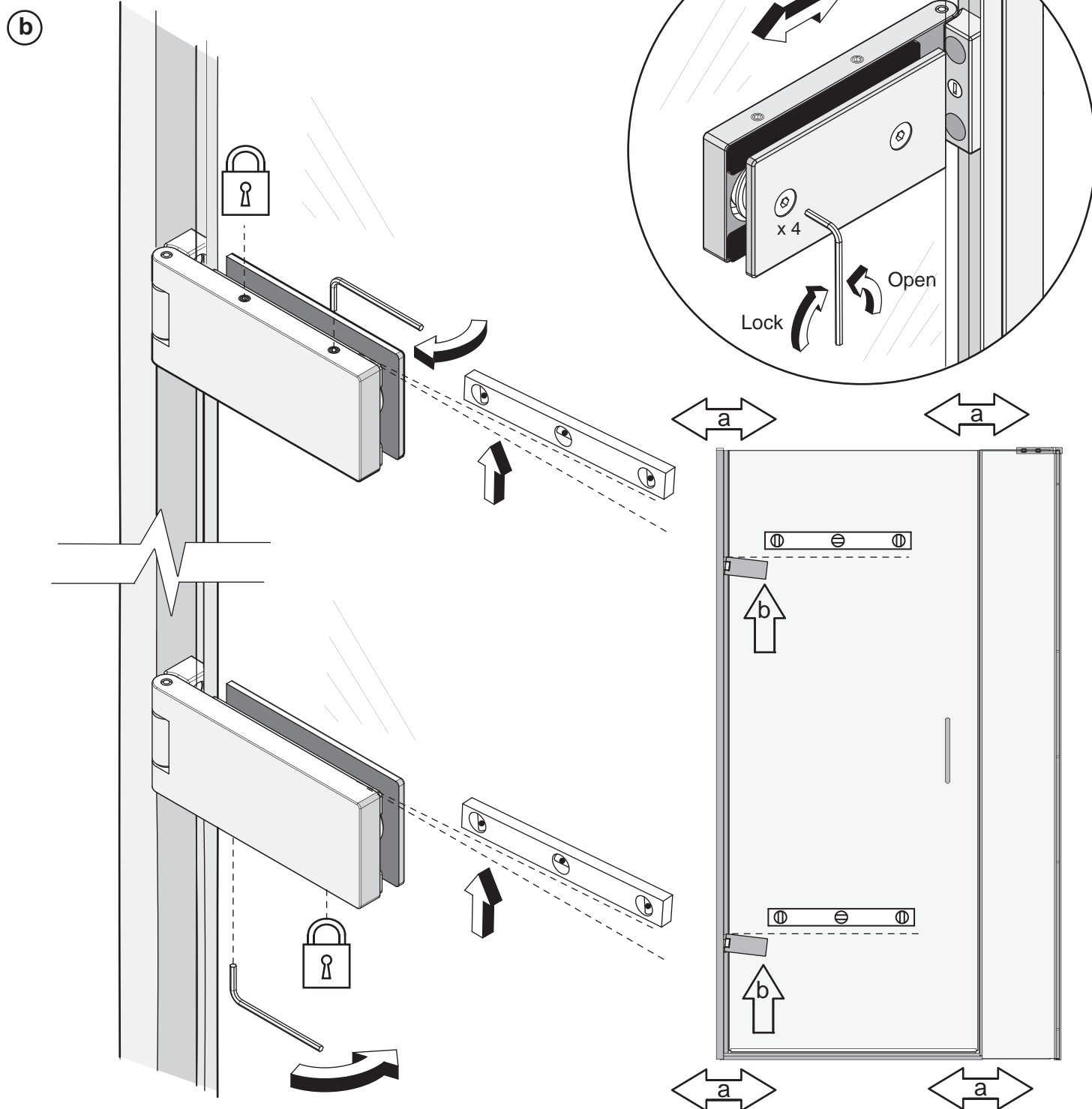


This stage is describing the fitting of the Door Handle

a. Curved Handle only - Disassemble the handle by loosening the 2 x M5 x 6 Socket set screws on the underside of the inside Handle. Unscrew the 2 x Handle connectors. Place the 4 x black glass washers either side of the 2 holes in the Door glass. Place the front Handle up to the outside of the glass screwing through the Handle connectors from the inside to hold the front Handle in position. Once the front Handle is secure, place the back Handle onto the Handle connectors, secure in position by tightening the 2 x Socket set screws on the underside of the back Handle.

b. Linear Handle only - Disassemble the handle by unscrewing the 2 x M4 x 40 Csk socket screws and removing the back handle. Place the 4 x black glass washers either side of the 2 holes in the Door glass. Carefully fit the front Handle and Handle connectors through the 2 holes in the Door glass. Fit the back Handle onto the Handle connectors and fix into position by fitting the 2 x M4 x 40 Csk socket screws.

STAGE 9

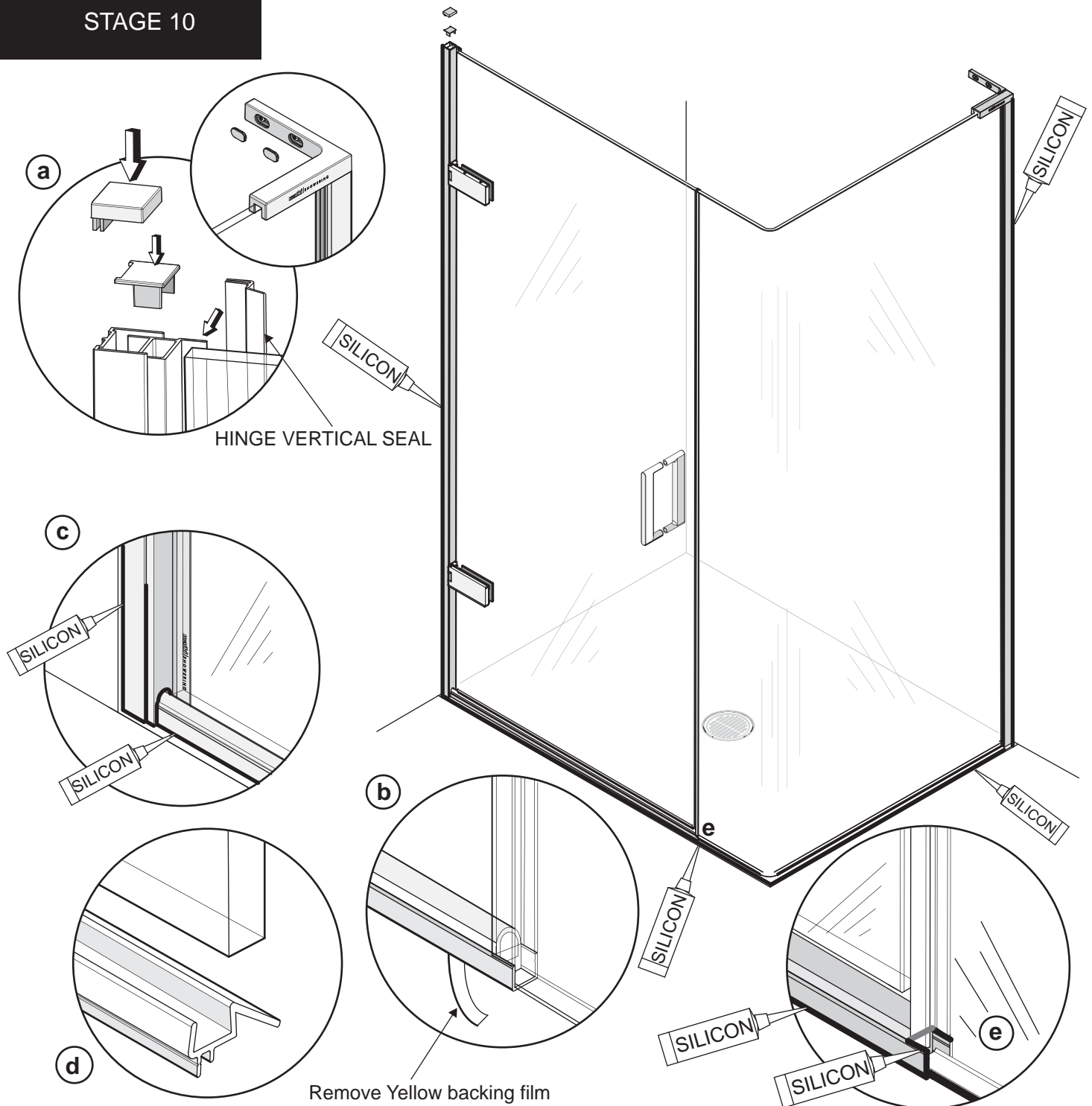


This stage is describing the Door adjustment

a. The Door glass can be adjusted left to right to open/close the distance between the edge of the Door glass and the Closure seal and also the edge of the Door glass and the Hinge seal. Loosen the 4 x M6 x 16 Csk socket screws in the back of the Hinges, adjust the Door left or right. Retighten the 4 x Csk socket screws.

b. To lift the Hinges tighten down the top outer Socket set screw on the upper Hinge and the underside inner Socket set screw on the lower hinge. Lock in position by tightening the top inner Socket set screw and the underside outer Socket set screw on the lower Hinge.

STAGE 10



This stage is describing fitting the Caps and Seals and Silicon sealant.

- a.** Push fit the Hinge adjuster top cap onto the top of the Wall Hinge frame. Then fit the Hinge wall mount top cap over the top. Fit the Hinge vertical seal to the Wall hinge frame level with the top. There will be 10mm gap between the bottom of the seal and tray. Push fit the 2 x Screw covers into the adjustment holes in the Top bracket.
- b.** Remove the Yellow film from the self adhesive tape on the underside of the Threshold and press down to fix in final position.
- c.** Apply a thin bead of silicon along the joint on the outside between the Hinge wall mount and the Adjuster column and 100mm up. Continue the silicon along the bottom edge of both the Wall Mounts and all the way up the outside of both the Wall mount extrusions between the Wall Mounts and the tiles. Apply a thin bead all the way along the Threshold between the extrusion and the Finished floor surface/tray. Continue around the joint where the Threshold joins the Adjuster column/- Fixed panel wall mount. Masking tape can be used to achieve a tidy edge to the sealant. Remove the masking tape immediately and allow the silicon to cure for 24 hours before using the shower.
- d.** Fit Door Horizontal Seal to underside of Door glass. Some trimming may be required. The seal should fit between the edges of the Hinge Wall Mount seal and the edge of the fin on the Door closure seal.
- e.** Apply a small bead of silicon sealant at the joint between the threshold and Door closure seal.

PARTS LIST

EWCL PARTS LIST				
ITEM	DESCRIPTION	PART No.	QTY	LENGTH
1*	WALL HINGE FRAME LH	6120 A SILVER	1	2002 mm
	WALL HINGE FRAME RH	6121 A SILVER		2002 mm
2	WET ROOM WALL MOUNT(NO SLOT)	5839 A SILVER		1993 mm
3*	DOOR GLASS WALL HINGED		1	
	MODEL 650 556 x 1974mm	6131 DGG PLAIN		
	MODEL 750 656 x 1974mm	6132 DGG PLAIN		
	MODEL 850 756 x 1974mm	6133 DGG PLAIN		
	MODEL 950 856 x 1974mm	6142 DGG PLAIN		
4*	EWCL DOOR SEAL		1	
	MODEL 650	6507 CLEAR		542 mm
	MODEL 750	6508 CLEAR		642 mm
	MODEL 850	6509 CLEAR		742 mm
	MODEL 950	6686 CLEAR		842 mm
5	EWCL/EHCL CLOSURE VERTICAL SEAL	6684 CLEAR	1	1990 mm
6	EWCL HINGE VERTICAL SEAL	6685 CLEAR	1	1990 mm
7*	WALL HINGED DOOR CHANNEL		1	
	MODEL 650	6122 A SILVER		598.5 mm
	MODEL 750	6123 A SILVER		698.5mm
	MODEL 850	6125 A SILVER		798.5 mm
	MODEL 950	6126 A SILVER		898.5 mm
8*	WALL HINGED THRESHOLD		1	
	MODEL 650	6127 A SILVER		581.5 mm
	MODEL 750	6128 A SILVER		681.5 mm
	MODEL 850	6129 A SILVER		781.5 mm
	MODEL 950	6137 A SILVER		881.5 mm
9*	R20 90 DEGREE SIDE PANEL		1	
	MODEL 800 756 x 260 x 2000mm	6134 MGG CLEAR		
	MODEL 900 856 x 260 x 2000mm	6135 MGG CLEAR		
	MODEL 1000 956 x 260 x 2000mm	6136 MGG CLEAR		
10*	DOOR HANDLE		1	
	CURVED BAR HANDLE	6184 AF		
	LINEAR BAR HANDLE	6185 AF		
	TRADITIONAL HANDLE	8632 AF		
11	'L' WALL BRACKET	6696 CHROME	1	
12	RECESS WALL HINGE ASSEMBLY	6188 AF	1	
13	WALL HINGED WALL MOUNT	6119 A SILVER		2003 mm
14	WALL MOUNT AND HINGE PARTS KIT	6177 AF	1	
15	WALL MOUNT & TOP BRACKET PARTS KIT	6178 AF	1	
16	WALL HINGE PARTS KIT	6179 AF	1	
17	ADJUSTMENT BLOCK GASKET	4561 AF	2	
18	ADJUSTMENT BLOCK	6040 A SILVER	2	
19	HINGE-GLASS INTERFACE(2mm)	6042 BLACK	4	
20	NYLON M8 SLOTTED GRUB SCREW	8634 AF	3	
21	M5 X 8 SOCKET SET SCREW	1273 A SILVER	2	
22	GLASS EDGE PROTECTOR	6091 CLEAR		
23	WALL MOUNT GASKET	1752 AF	2	2000 mm
24	DOOR ASSEMBLY SUPPORT	6053 WHITE	1	
25	DOOR ASSEMBLY BLOCK	6052 WHITE	1	
26	EWCL INSTALLATION INSTRUCTIONS	0936 AF	1	

We recommend that these instructions are handed to the user with a note of a date of purchase and model details.
To order replacements quote: Part Descriptions, Model, Part Number and Colour.

PARTS KIT 6179 AF
4 x No.10 x 100 PAN HEAD S/TAP SCREW
4 x No. 10 WALL PLUG

PARTS KIT 6177 AF
4 x No.8 x 32 PAN HEAD S/TAP SCREW
4 x WALL PLUG
1 x RECESS HINGE WALL MOUNT CAP
1 x RECESS ADJUSTER CAP

PARTS KIT 6178 AF
4 x No.8 x 32 PAN HEAD S/TAP SCREW
7 x WALL PLUG
2 x No.8 x 50 PAN HEAD S/TAP SCREW
2 x BRACKET CAPS

