

matki | S H O W E R I N G

EAUZONE PLUS

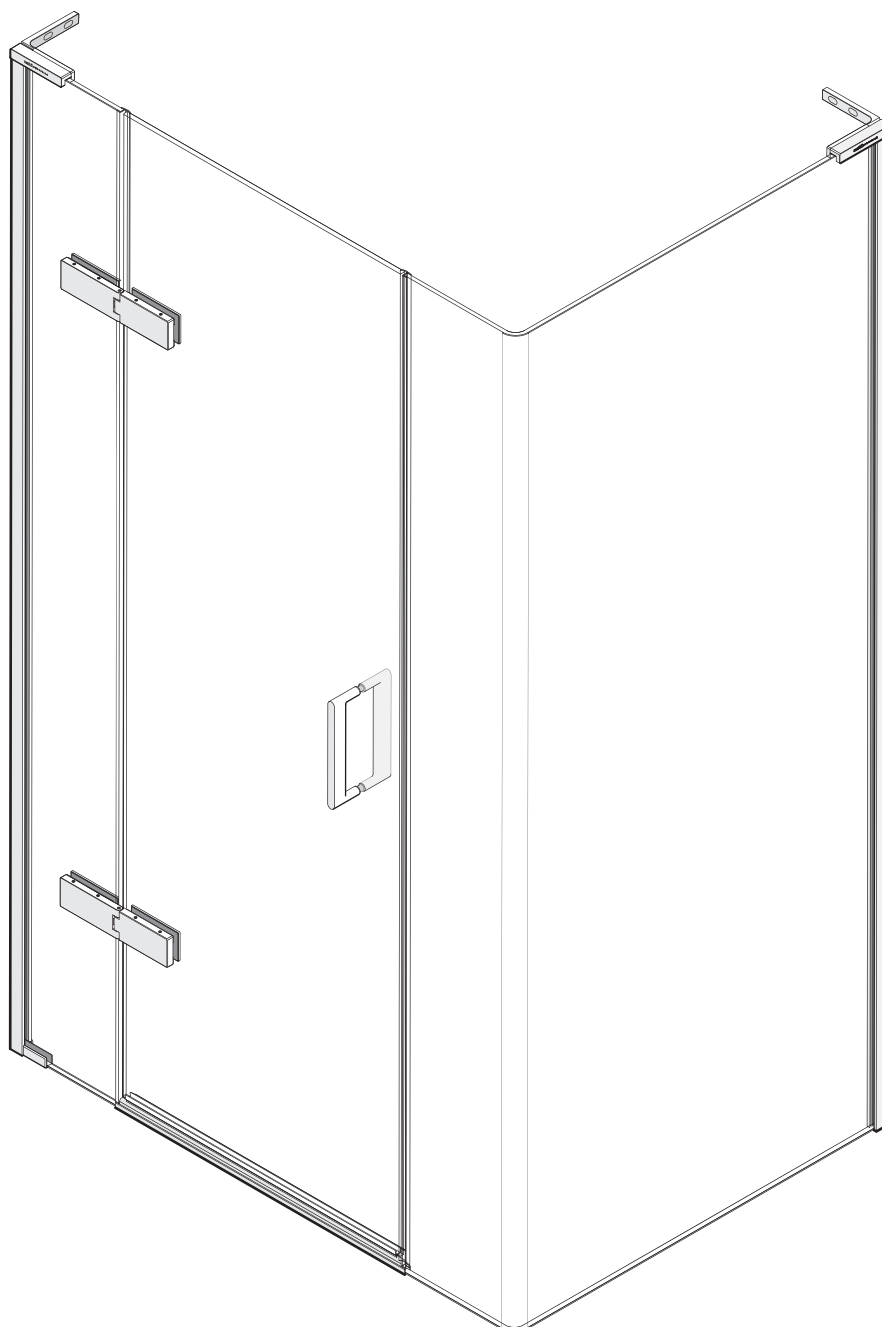
EHCL - HINGED DOOR FROM PANEL,
WITH RADIUS 20 PANEL FOR CORNER

INSTALLATION

PARTS LIST

BRITISH PATENT NO:2470778

Please pass the
Guarantee Card
to the customer.



CE

matki

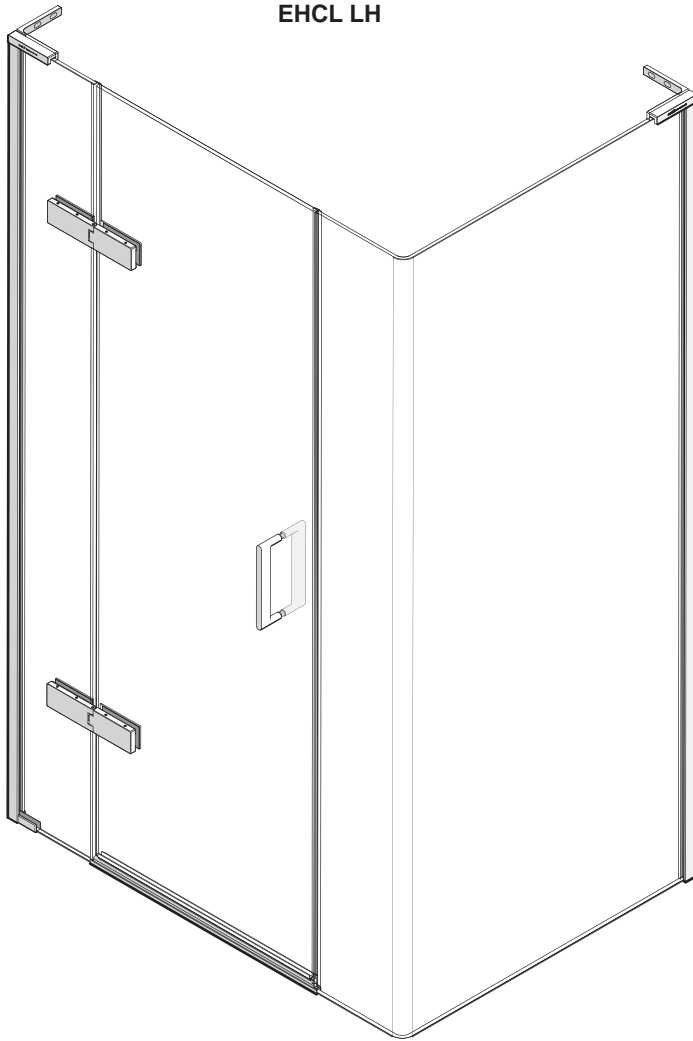
13

Matki PLC, Churchward Road, Yate,
Bristol BS37 5PL

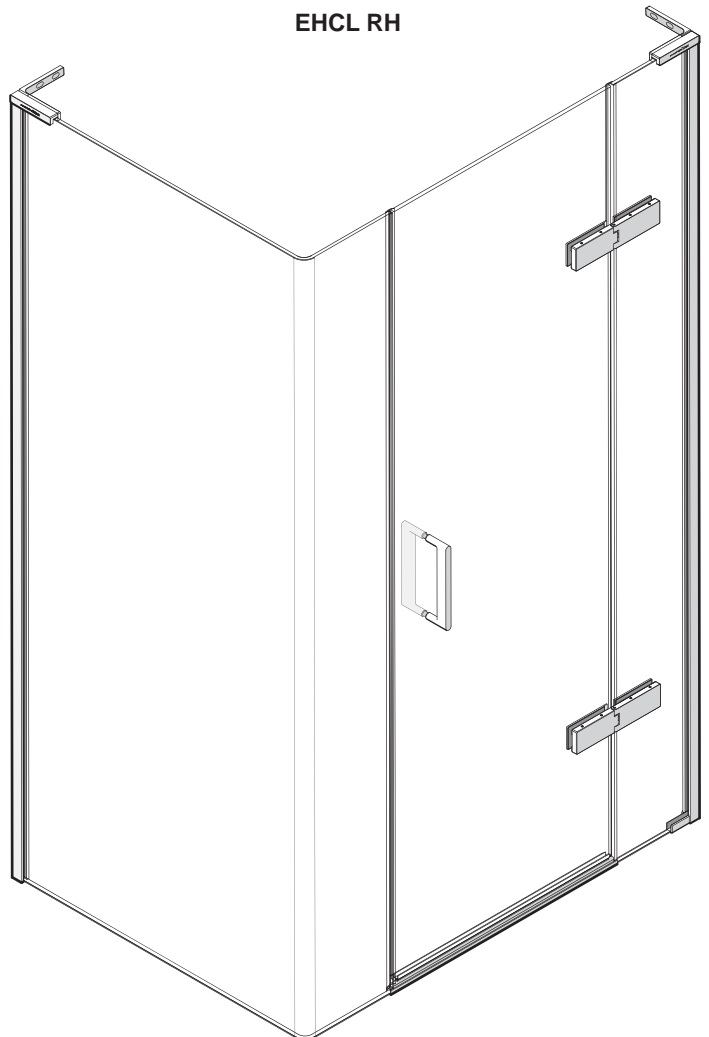
EN 14428:2008+A1

MATKI PLC, CHURCHWARD ROAD, YATE, BRISTOL, BS37 5PL
TELEPHONE:01454 322 888 (CUSTOMER SERVICES) EMAIL: techsupport@matki.co.uk

EHCL LH



EHCL RH



IMPORTANT

TOOLS REQUIRED

Masonry Drill bit 6mm, Tape Measure, Screw Drivers, Safety Glasses, Electric Drill, Level, Pencil, Adjustable Spanners, Non Slip Gloves

Before disposing of carton and/or commencing assembly, please check all the parts to ascertain that none are missing and they are all undamaged. No claim for missing/damaged parts will be accepted once the packing carton has been disposed of and/or assembly has commenced.

In case of query contact your Stockist with details of model number and details of serial number.

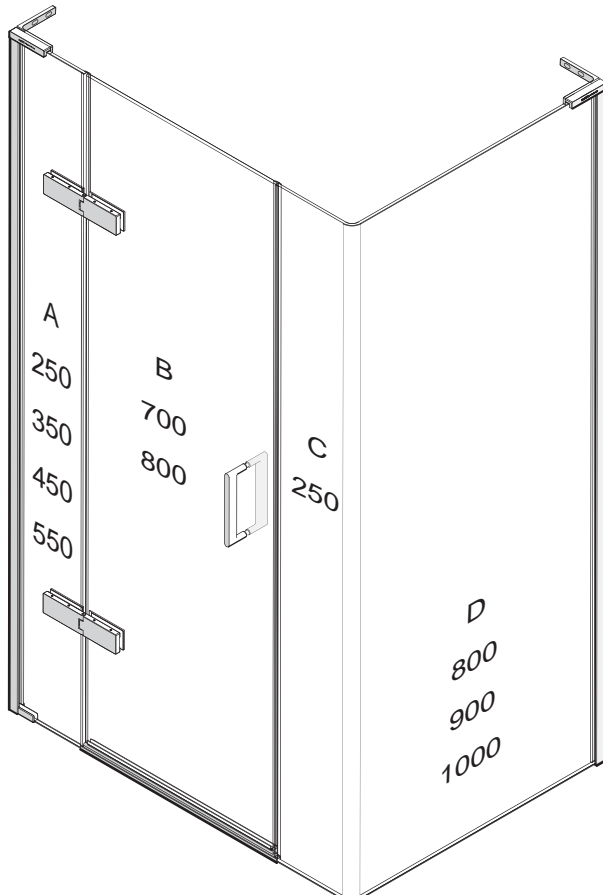
PREPARATION IMPORTANT

1. Please read complete installation instructions before fitting the Enclosure and Tray (if fitting).
2. We recommend that two people are available for fitting of Side panel and Door, Stage 7+8. The **Eauzone Plus** range is **10mm Glass** construction. Large glass panels are very heavy. We recommend the use of Safety glasses and Non slip gloves when handling the glass panels.
3. Ensure that the product can be **fixed** to a **solid masonry wall** or suitable **timber stud work grade C16/C24** in the area behind the Wall frames and Panel fixing brackets.
4. Shower trays or tiled floors **must be absolutely level** where enclosures are fitted
5. If fitting a tray we recommend a **drainage test** is carried out before the tray is tiled in position.
6. The assembly should be installed onto a waterproof wall covering and installed after the Tray and wall coverings are in place. Where Tiling lips are provided Trays should be let into the Wall with the Tiling lip flush with the wall to allow the Tiling to overlap the Tiling lip.
7. Seal between tray and tiles. Remove any excess sealant from the area/joint between the tray and the tiles where the Wall Mount is to be fitted. This will ensure the Wall mount fits correctly to the wall and tray/or tiled floor.

CAUTION: TEMPERED GLASS CANNOT BE CUT, POLISHED METAL AND CHROME CAN BE SCRATCHED. CAREFULLY REMOVE ASSEMBLY FROM CARTON, DO NOT PLACE GLASS ON HARD FLOOR OR EXPOSE EDGES TO IMPACT.

DIMENSIONS

Dimensions are approximate.
Images show LH EHCL
installation. Reverse for RH.



HINGE PANEL + DOOR + CLOSURE PANEL

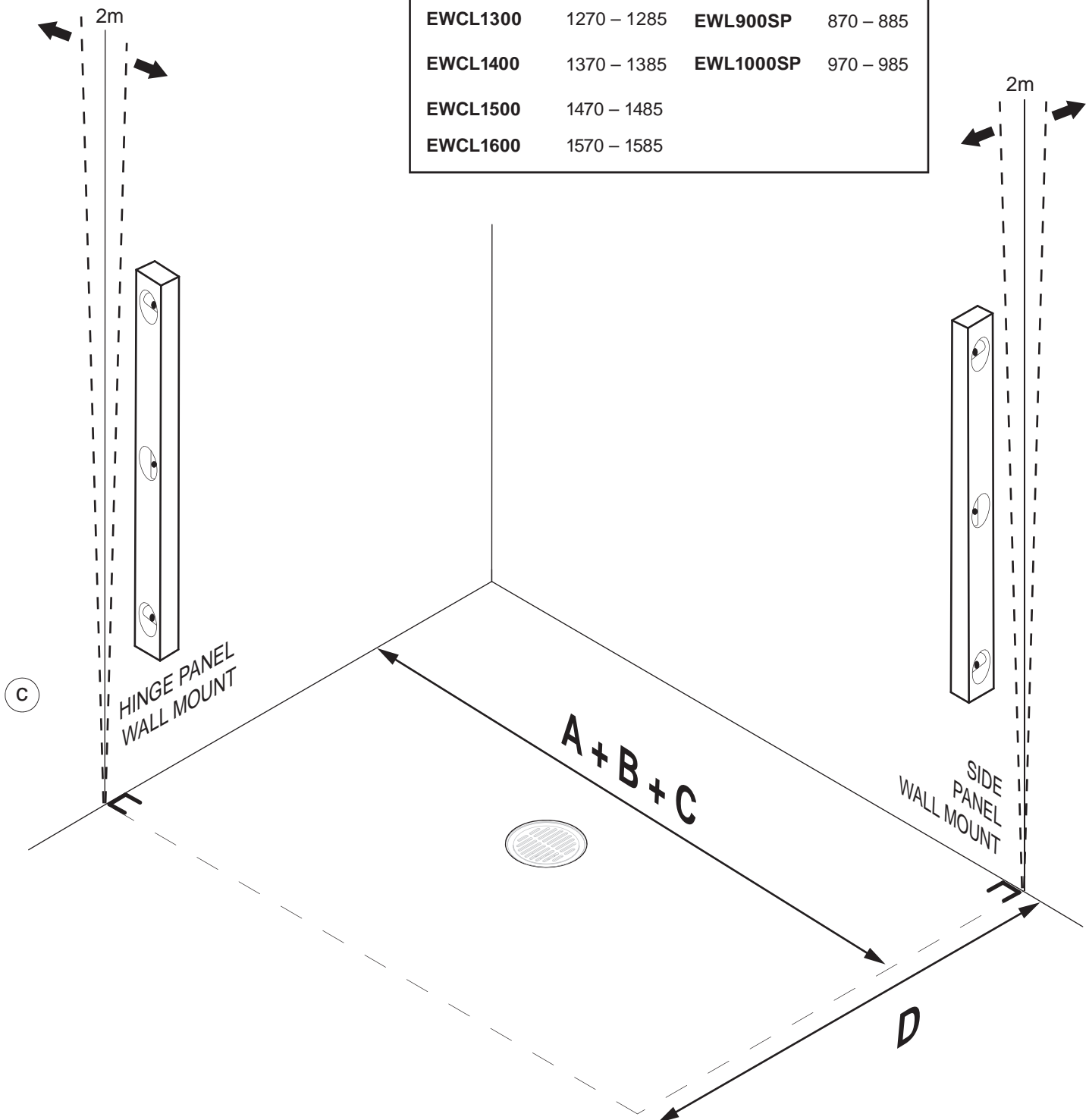
MODEL	A	B	C	Adjustment Range
EHCL1200	250	700	250	1170 – 1185mm
EHCL1300	350	700	250	1270 – 1285mm
EHCL1400	450	700	250	1370 – 1385mm
EHCL1500	550	700	250	1470 – 1485mm
EHCL1600	550	800	250	1570 – 1585mm

SIDE PANEL D

MODEL	Adjustment Range
EWL800SP	770 – 785mm
EWL900SP	870 – 885mm
EWL1000SP	970 – 985mm

STAGE 1

	A + B + C		D
EHCL1200	1170 – 1185	EWL800SP	770 – 785
EWCL1300	1270 – 1285	EWL900SP	870 – 885
EWCL1400	1370 – 1385	EWL1000SP	970 – 985
EWCL1500	1470 – 1485		
EWCL1600	1570 – 1585		



This stage is describing the placement of the Wall mounts.

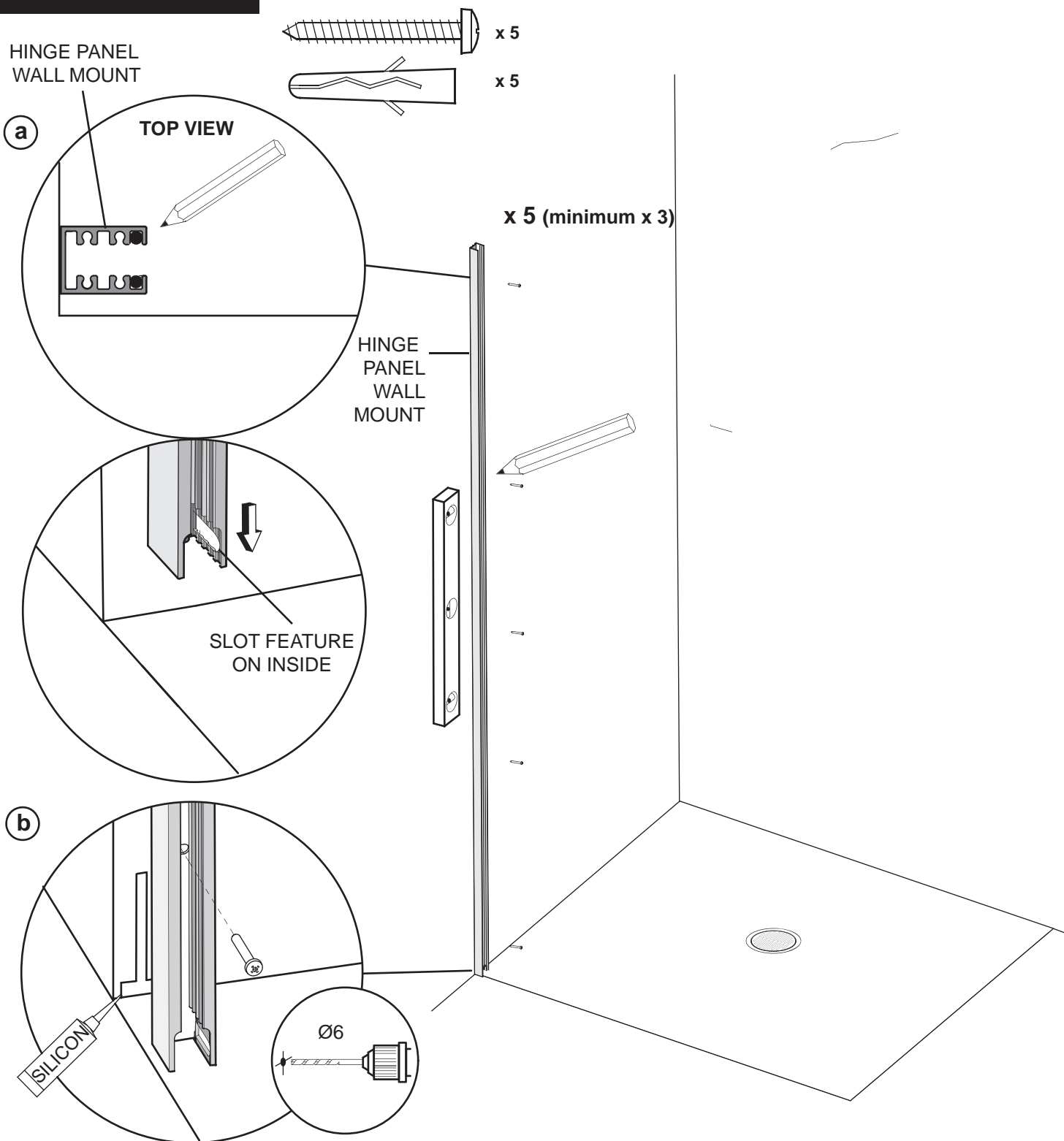
The Eauzone surround has adjustable Wall Mounts to compensate for out of plumb walls and overall size adjustments. There is 15mm of adjustment in both the Hinge Panel wall mount and Side panel wall mount. If walls are out of plumb ensure the placement of wall mounts allows for the out of plumb walls and size requirements within the product adjustment range stated.

Important: Check the walls for upright before positioning the wall mounts. If the wall is leaning **outward** at the top adjust the dimension inwards to fit within the adjustment range. If the wall is leaning **inwards** at the top adjust the dimension outwards to fit within the adjustment range.

Measure and mark the distance from the Wall to the outside face of the wall mount. The table of dimensions show overall product width to outside of Wall mounts.

STAGE 2

IMAGES SHOW LH PANEL HINGED DOOR INSTALLATION REVERSE FOR RH.

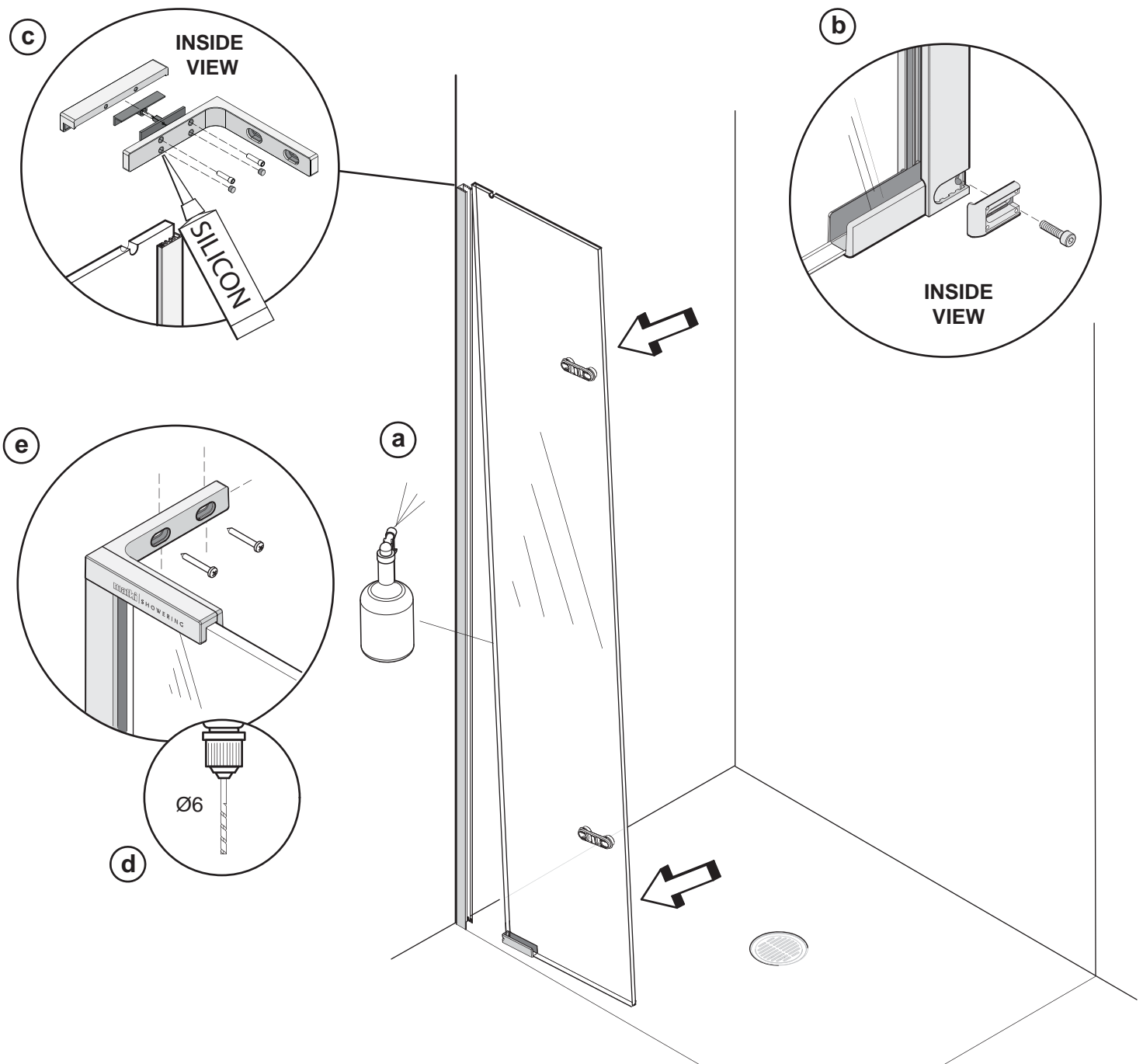


This stage is describing the fitting of the Hinge panel wall mount

a. Position the Hinge panel wall mount as determined in Stage 1. The Wall Mount has a top and bottom, the cut-out should be at bottom with the slot feature facing inwards. Plumb the Wall Mount for upright and mark the fixing holes in the centre of the slots.

b. Drill 5 x fixing holes in the wall (minimum x 3) and insert the Wall plugs. Clean the area and apply Silicon Sealant to the area behind the Wall mount between the tray and tiles and 100mm up the wall, central to the width of the Wall mount. Fit the Wall mount using the No.8 x 32mm Pan Head Screws

STAGE 3



This stage is describing the fitting of the Hinge panel.

a. Lightly wet the edge of the glass panel with soapy water. Gently push the Hinge panel into the wall mount.

b. Fit the Panel bracket clamp plate into the slot feature in the inside of the wall mount.

Fit the M4 x 16mm socket cap screw to tighten the Panel bracket clamp plate to the wall mount. Do not fully tighten to allow for further hinge panel adjustment.

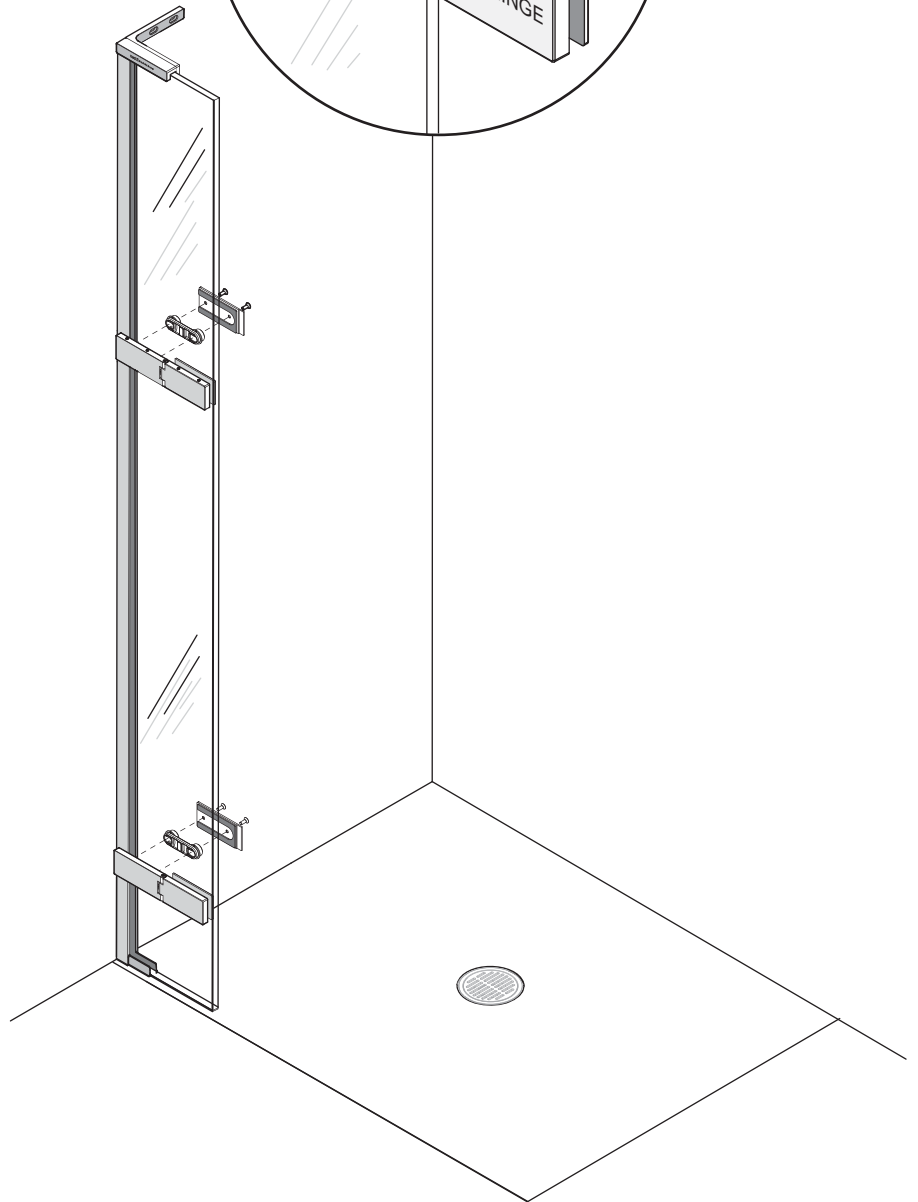
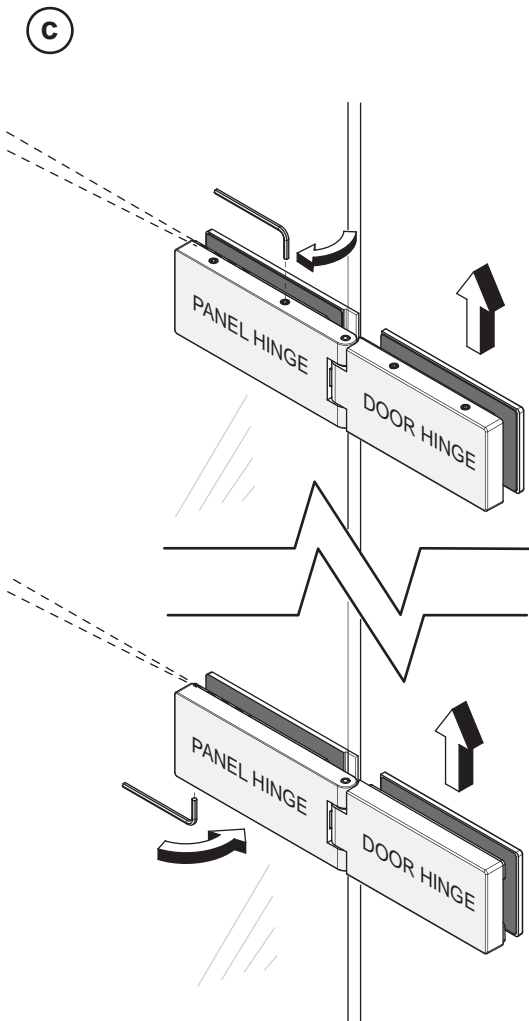
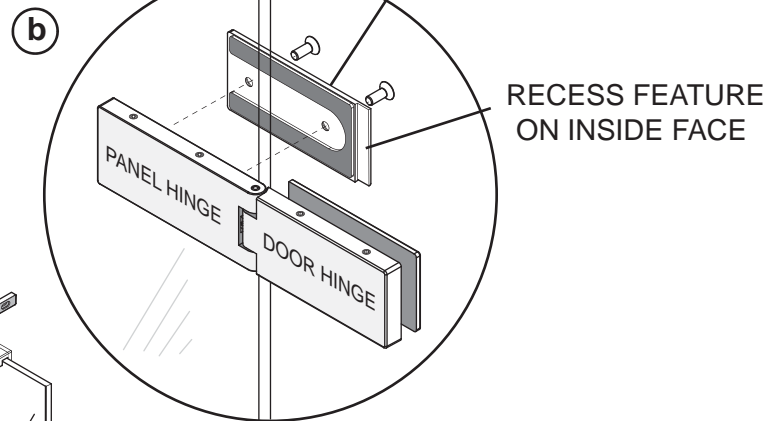
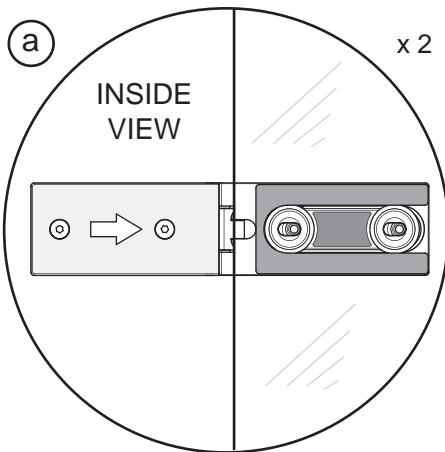
c. Fitting of Hinge panel top bracket: fit the two piece hard plastic 'U' shaped gasket on the top edge of the glass with the grooved face of the gasket facing outwards. Fit the wall bracket over the glass and onto the top of the wall mount.

d. Mark the centre of the slotted holes in the Top bracket onto the Wall, remove the Top Bracket and drill and fix the wall plugs.

e. Fix the bracket to the wall using the No.8 x 50 Pan head screws. Clamp the bracket onto the glass by tightening the clamping screws on the inside of the bracket.

c. Fit the clamping screw cover caps into the two unused holes on the inside of the wall bracket. Apply a small spot of silicon in the holes before fitting the caps.

STAGE 4



This stage is describing the fitting of the Hinges to the Hinge panel

The Hinges are labelled. Remove the labels from the hinges after on completion of the product installation.

a. Remove and set aside the **Panel Hinge** back plates from the Hinge assemblies. These back plates have a recessed feature to accept the Hinge closure seal. The hinge plates for the Door hinge do not have the recess feature.

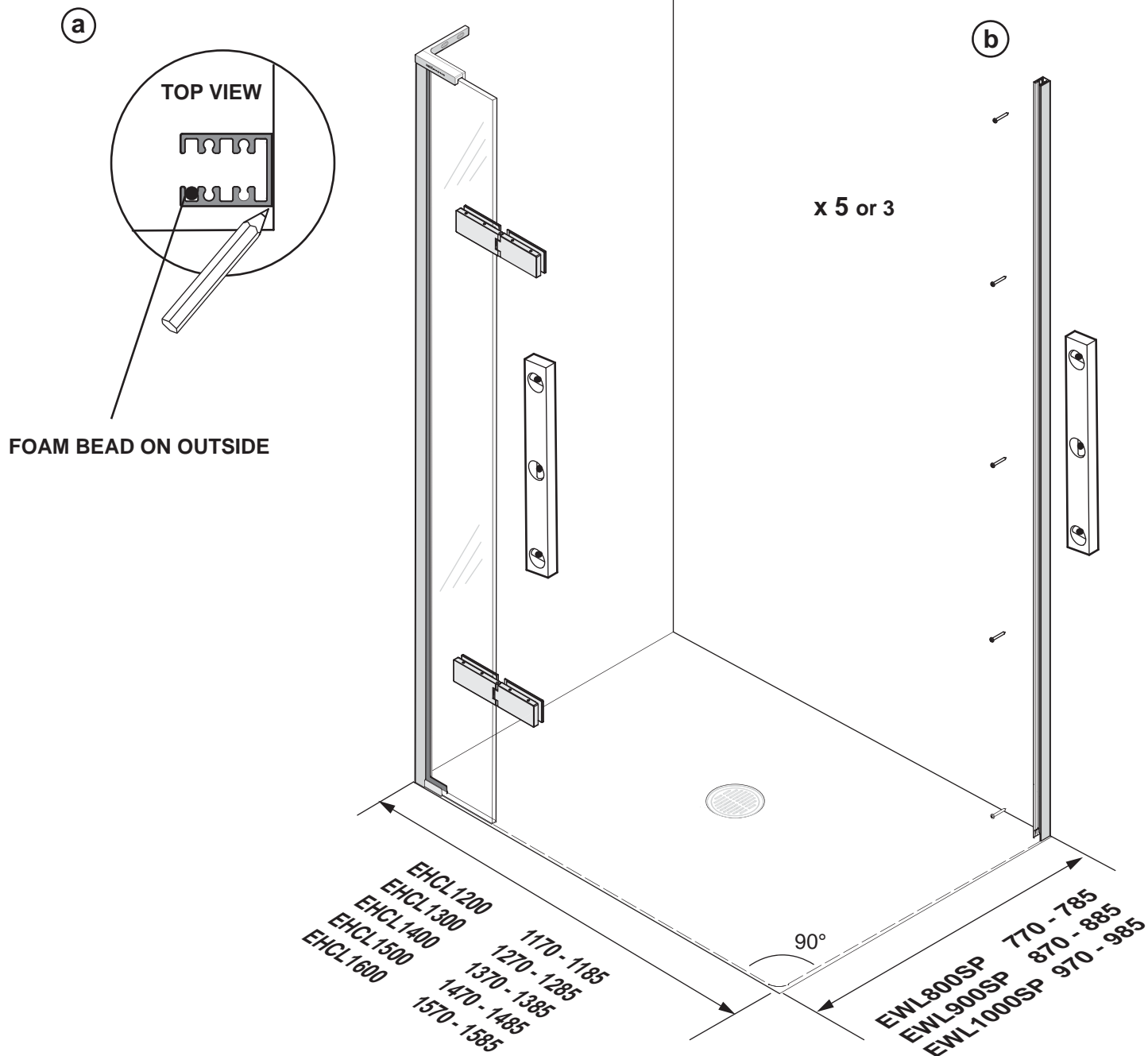
Place the upper Hinge assembly on to the face of the Hinge panel glass over the Adjuster block (factory fitted). (The Hinges are handed top and bottom, ensure the Socket set screws are visible on the top of the top Hinge and on the underside of the lower Hinge). Push the Hinge assembly so that it is fully adjusted over towards the Hinge panel wall side.

b. Re-fit the Panel Hinge back plate to fix the Hinge assembly to Hinge panel glass. Repeat for the Lower hinge assembly.

c. On the Hinge panel side of the Hinge assemblies - Tighten down the top inner Socket set screw on the upper Hinge and the underside outer Socket set screw on the lower hinge to lift the Hinge upwards. **We recommend that you angle the Hinges slightly upwards towards the Door side to allow the Hinge to be adjusted downward to horizontal when the Door is fitted.**

STAGE 5

LH CORNER



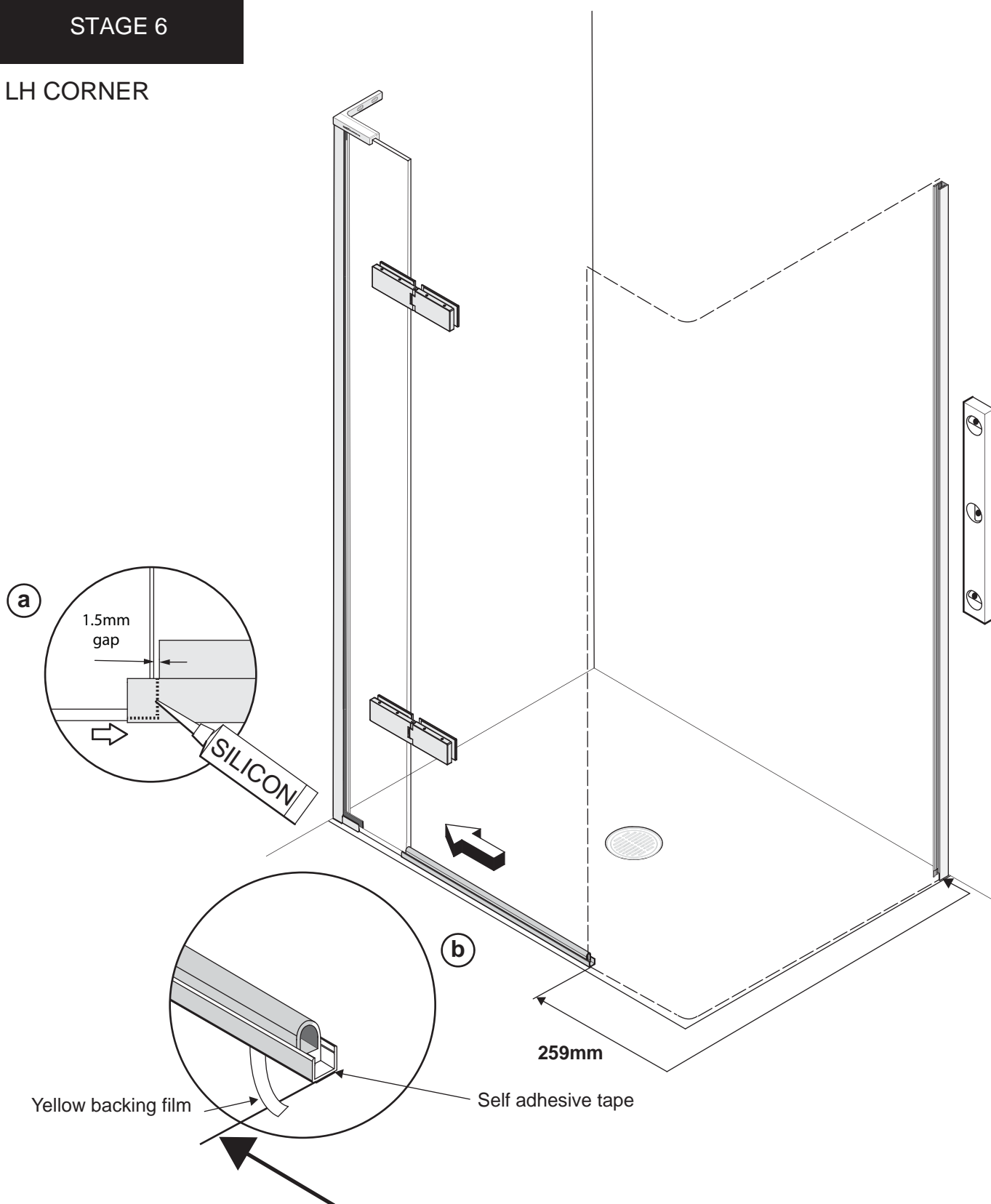
This stage is describing the final marking and fitting the Side panel wall mount.

a. Position the Side panel wall mount as marked in Stage 1.

b. Drill 5 x fixing holes in the wall (minimum 3) and insert Wall plugs. Clean the area and apply Silicon Sealant to the area behind the Wall mount between the tray and tiles and 100mm up the Wall, central to the width of the Wall mount. Fit the Wall mount using the No.8 x 32mm Pan Head Screws.

STAGE 6

LH CORNER



This stage is describing the fitting the threshold to the Hinge panel.

As a guide the dimension from the end of the threshold to the outside face of the Side panel wall mount is **259mm**. Adjust the hinge panel if required to re-position the threshold the correct distance from the Side panel wall mount.

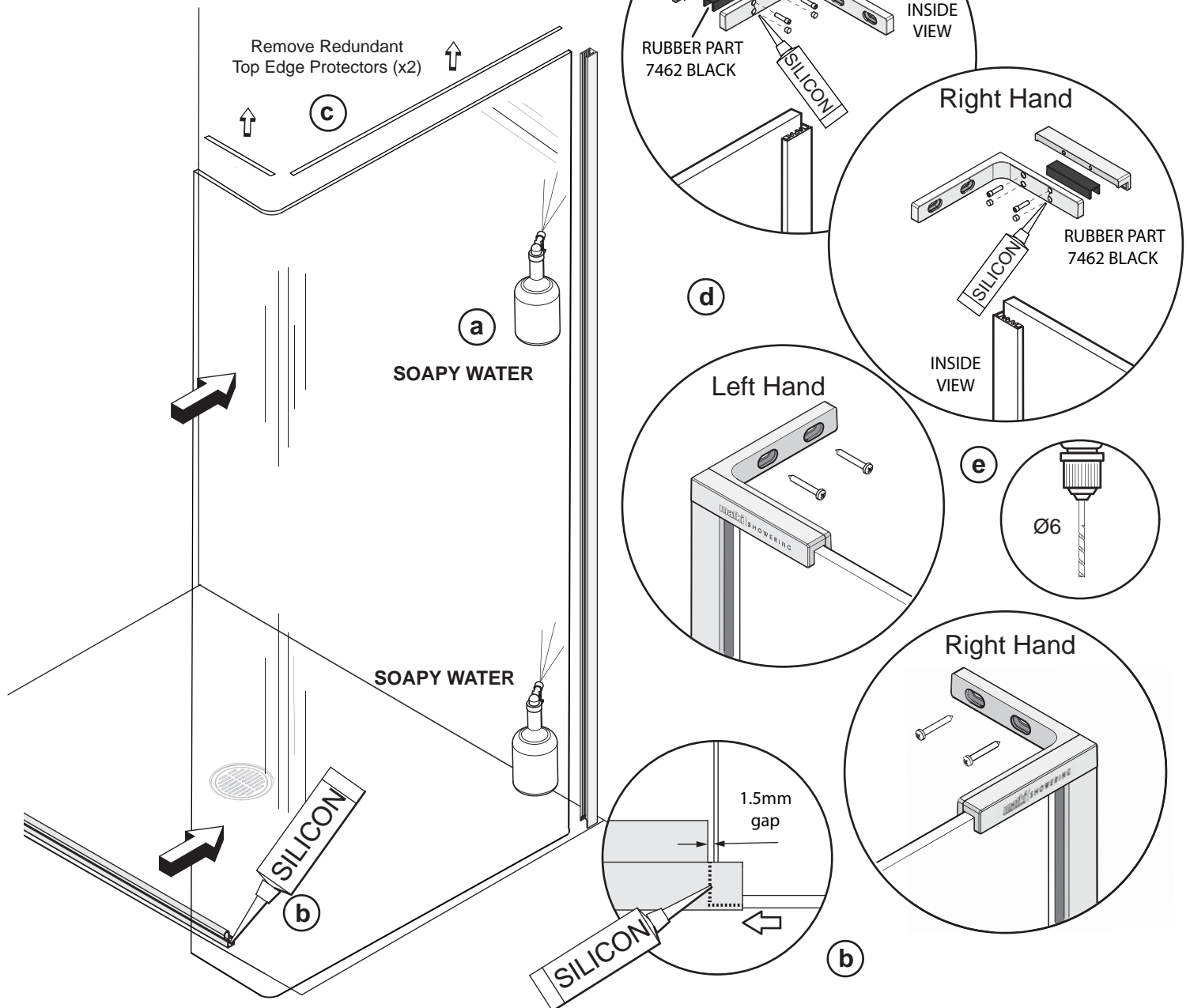
a. Before fitting the hinge panel glass to the threshold extrusion apply a spot of silicon in the base of the threshold. Leave a 1.5mm gap between the glass and the inner face of the threshold for the Closure vertical seal to slot down.

b. Self adhesive tape has been applied to the underside of the threshold to aid final positioning of the threshold. Before fitting the Side panel remove a small length of the Yellow backing film from the tape so that the backing film can be easily removed on the final fixing of the threshold.

STAGE 7



LH CORNER



This stage is describing the fitting of the Side panel glass. We recommend two people are available for this stage.

The Side Panel Top Bracket is unhandled. To change the orientation of the bracket to suit your product; remove the screws, flip the inside 'L' Shaped part over and re-attach with the screws in the top holes to the respective LH/RH front plate.

a. Lightly wet the edge of the glass panel with soapy water and the opening of the wall mount. Gently push the panel into the wall mount. Adjust the Side panel to inwards or outwards to align with the threshold.

b. Before fitting the Side panel glass to the threshold extrusion apply a spot of silicon in the base of the threshold. Leave a 1.5mm gap between the glass and the inner face of the threshold for the Closure vertical seal to slot down.

c. Remove the two top, redundant glass edge protectors (x2).

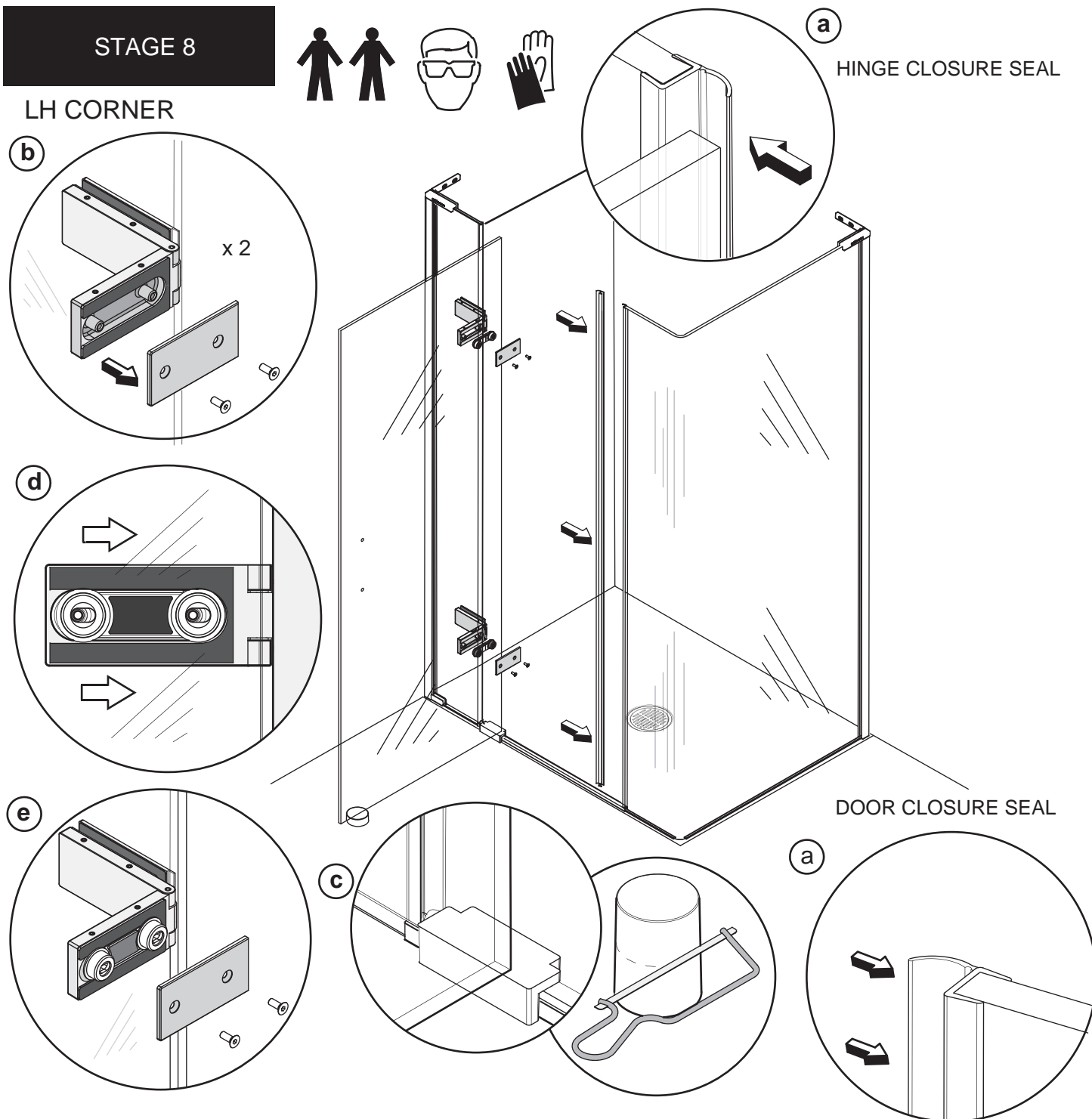
d. Fitting of Side Panel Top bracket: Fit the rubber 'U' shaped gasket onto the top edge of the glass with the grooved face of the gasket facing outwards. Fit the wall bracket over the glass and onto the top of the wall mount.

e. Mark the centre of the slotted holes in the wall bracket onto the wall. Remove the wall bracket and drill and fix the wall plugs. Fix the bracket to the wall using the No.8 x 50 Pan head screws. Clamp the bracket onto the glass by tightening the clamping screws on the inside of the bracket. Fit the clamping screw cover caps into the two unused holes on the inside of the wall bracket. Apply a small spot of silicon in the holes before fitting the caps.

STAGE 8



LH CORNER



This stage is describing the hanging of the Door.

a. Push fit the Door closure seal to the edge of the Side panel fitting down to the threshold in the 1.5mm gap (6d). Push fit the Hinge closure seal to the edge of the hinge panel fitting down to the threshold in the 1.5mm gap (5a).

b. Remove and set aside the Hinge back plates.

Note: To stop the Hinges moving back towards the Wall when loading the Door, a packer (such as the White foam buffer used to protect the glass in the packaging) can be placed behind both of the Hinges.

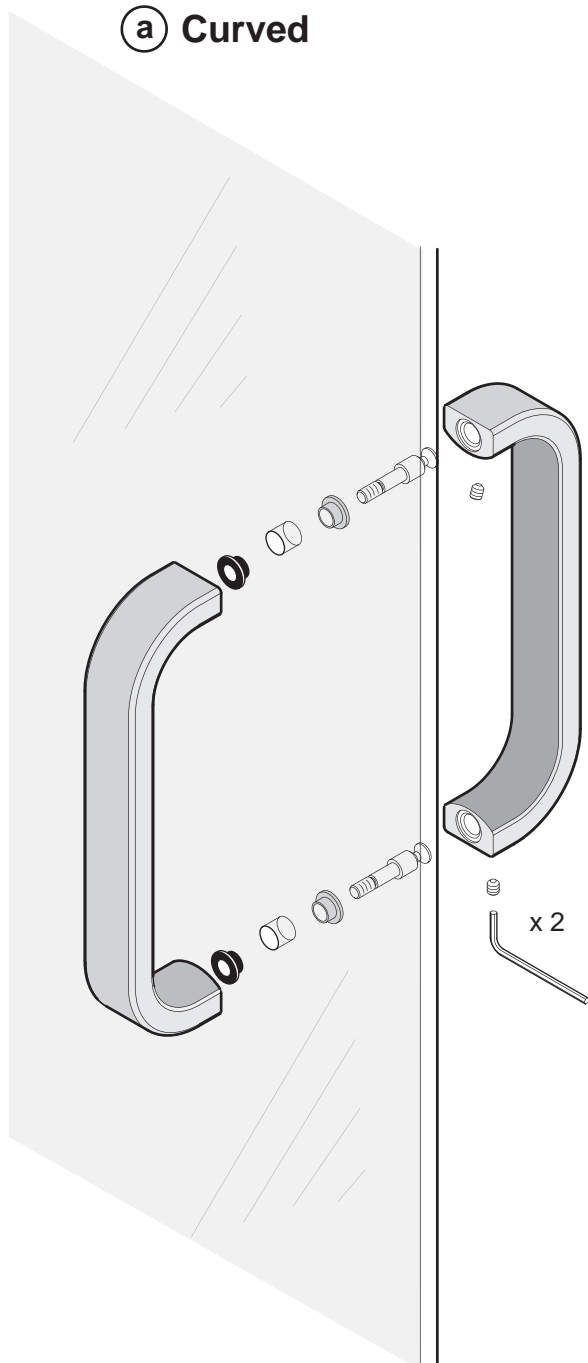
c. Place the Door assembly block over the track on the Hinge side of the Door opening. The tubular Door support can be used to support the other end of the door. Measure and mark the Door support so that the top is parallel with the top of the Door assembly block. Cut to size as required using a Hacksaw. Note: Glass can break, please handle carefully and do not place on/against a hard surface.

d. We recommend 2 people are available for this stage and the use of Safety glasses and Non slip gloves when handling glass panels - Carefully lift the Door onto the Hinges, ensuring the Adjustment blocks fitted to the glass are on the Hinge side. The Door support and assembly block will now help to align the Door glass with the Hinges. The door has left to right adjustment, push the Door glass fully towards the hinges (on minimum adjustment)

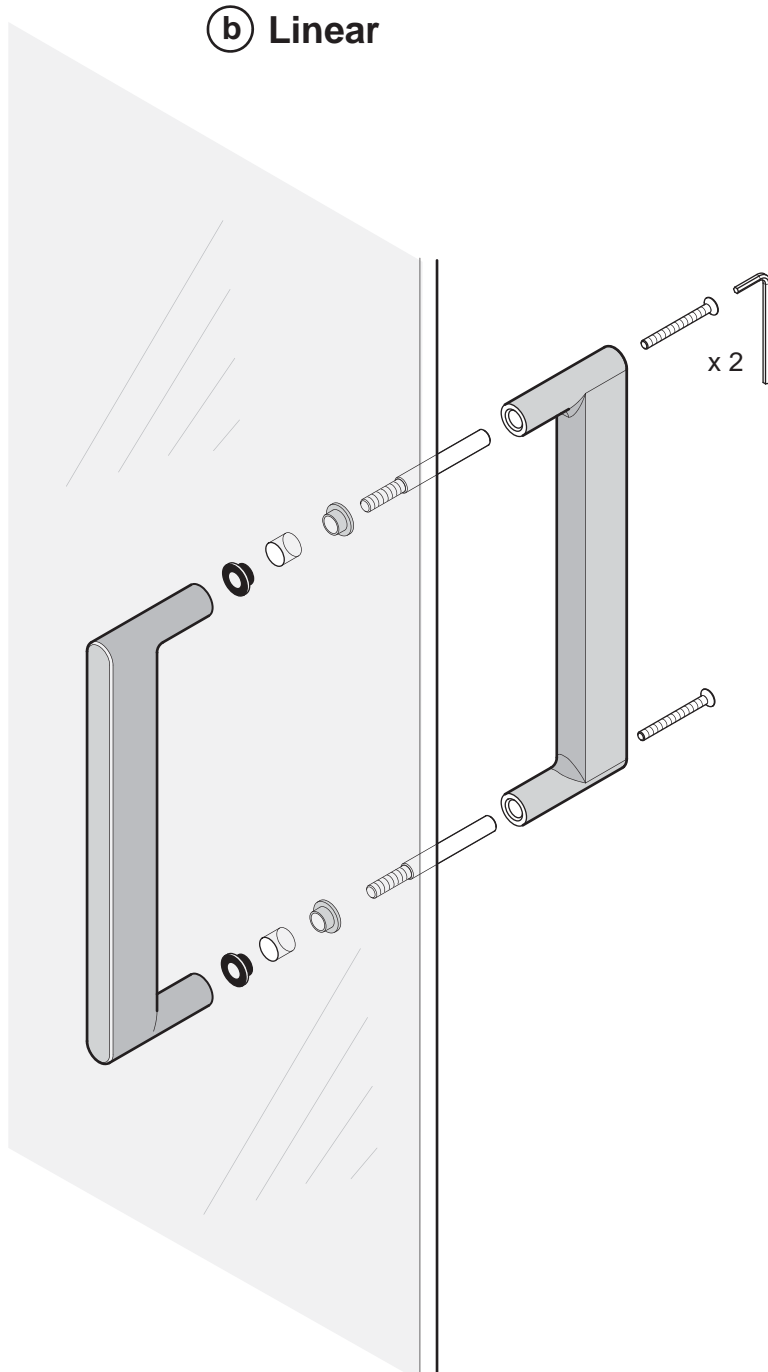
e. Re-fit the back plates.

STAGE 9

a Curved



b Linear

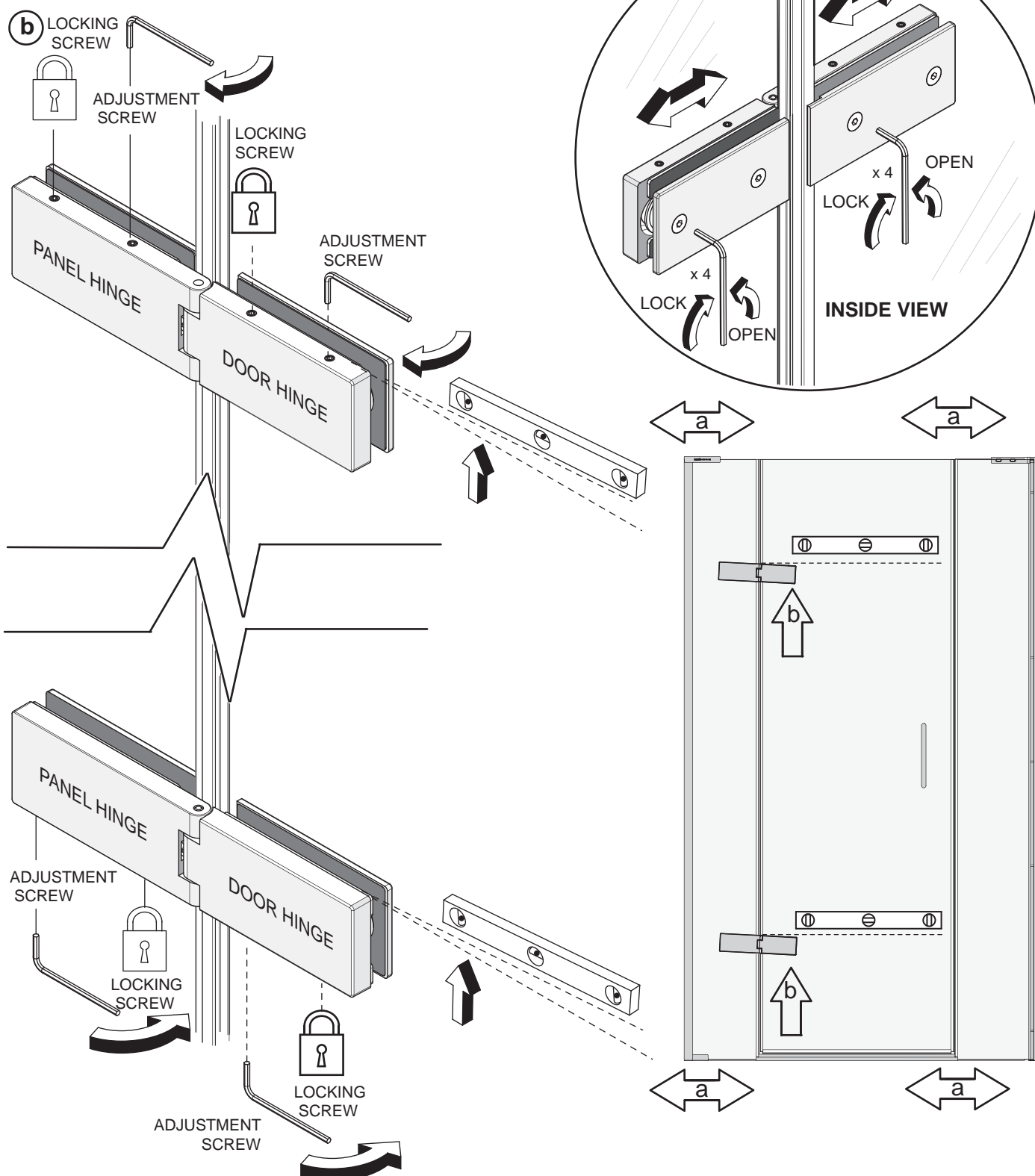


This stage is describing the fitting of the Door Handle

a. Curved Handle only - Disassemble the handle by loosening the 2 x M5 x 6 Socket set screws on the underside of the inside Handle. Unscrew the 2 x Handle connectors. Place the 4 x black glass washers either side of the 2 holes in the Door glass. Place the front Handle up to the outside of the glass screwing through the Handle connectors from the inside to hold the front Handle in position. Once the front Handle is secure, place the back Handle onto the Handle connectors, secure in position by tightening the 2 x Socket set screws on the underside of the back Handle.

b. Linear Handle only - Disassemble the handle by unscrewing the 2 x M4 x 40 Csk socket screws and removing the back handle. Place the 4 x black glass washers either side of the 2 holes in the Door glass. Carefully fit the front Handle and Handle connectors through the 2 holes in the Door glass. Fit the back Handle onto the Handle connectors and fix into position by fitting the 2 x M4 x 40 Csk socket screws.

STAGE 10



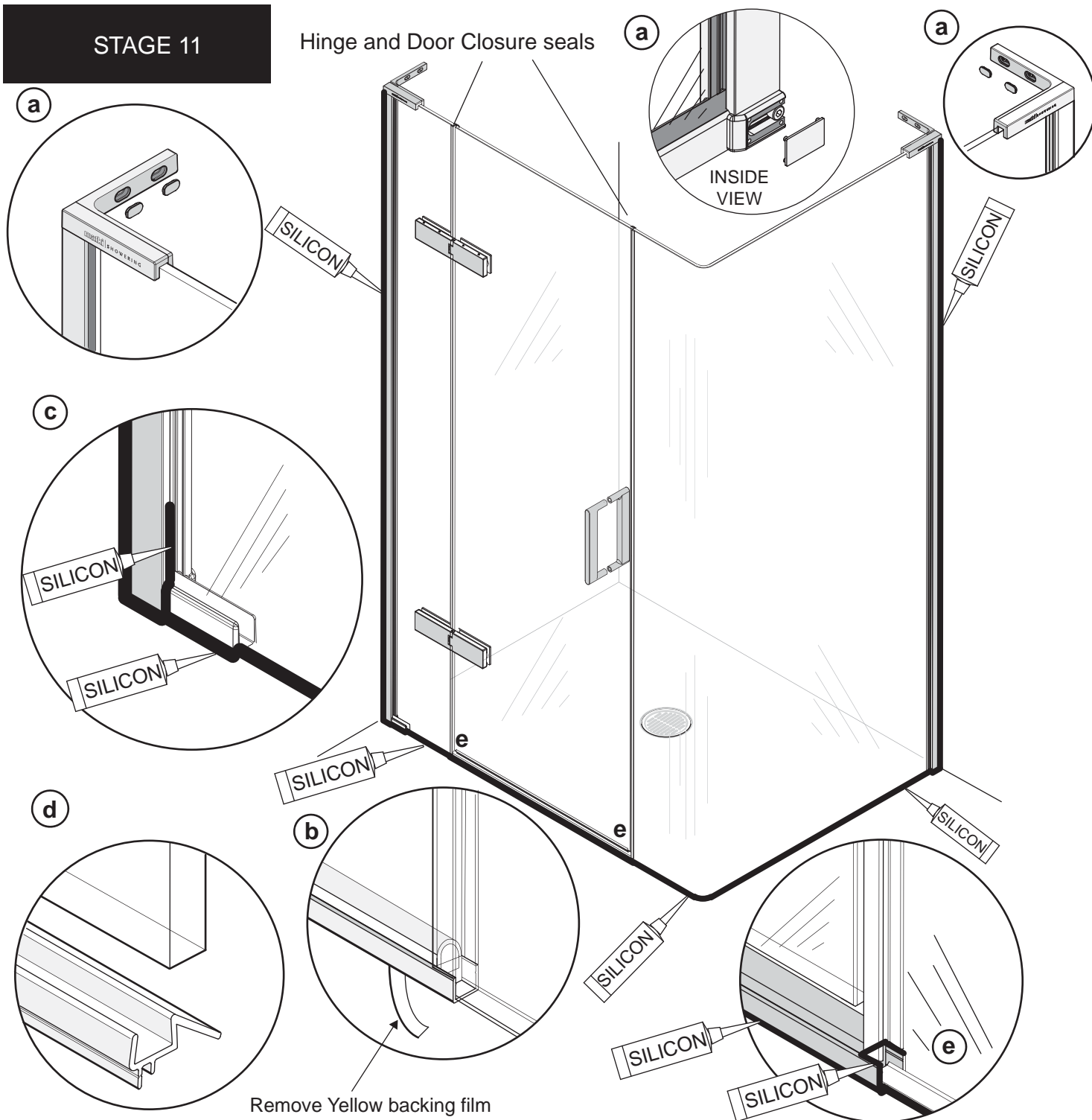
This stage is describing the Door adjustment

a. The Door glass can be adjusted left to right to open/close the distance between the edge of the Door glass and the Closure seal and also the edge of the Door glass and the Hinge seal. Loosen the 4 x M6 x 16 Csk socket screws in the back of the Door side of the hinges, adjust the Door left or right. Retighten the 4 x Csk socket screws. Repeat if necessary on the Hinge panel side of the hinges.

b. To lift the Hinges on the Door side, tighten down the top outer Socket set screw on the upper Door hinge and the underside inner Socket set screw on the lower Door hinge. Lock the Door hinge in position by tightening the top inner Socket set screw and the underside outer Socket set screw on the lower Hinge. To lift the Hinges on the panel side, tighten down the top inner Socket set screw on the upper Panel hinge and the underside outer Socket set screw on the lower Panel hinge. Lock the Panel hinge in position by tightening the top outer Socket set screw and the underside inner Socket set screw on the lower Panel hinge.

STAGE 11

Hinge and Door Closure seals



This stage is describing fitting the Caps and Seals and Silicon sealant.

a. Push fit the 2 x Screw covers into the adjustment holes in the Top L brackets and the Panel bracket cover plate at the bottom on the wall mount.

b. Remove the Yellow film from the self adhesive tape on the underside of the threshold and press down to fix in the final position ensuring the door and panels are adjusted and aligned correctly.

c. Apply a thin bead of silicon along the joint on the outside between the Wall mount and the Glass panel bracket and glass 100mm up. Continue the silicon along the bottom edge of both the Wall Mounts and all the way up the outside of both the Wall mount extrusions between the Wall Mounts and the tiles. Apply a thin bead all the way along the joint where the hinge panel, Threshold and side panel meet the finished floor surface/tray. Masking tape can be used to achieve a tidy edge to the sealant. Remove the masking tape immediately and allow the silicon to cure for 24 hours before using the shower.

d. Fit the Door Horizontal Seal to underside of Door glass. Some trimming may be required. The seal should fit between the soft fin edges of the Hinge closure seal and the Door closure seal.

e. Apply a small bead of silicon sealant at the horizontal joint between the door threshold and the vertical closure seals.

PARTS LIST

We recommend that these instructions are handed to the user with a note of a date of purchase and model details.

To order replacements quote: Part Descriptions, Model, Part Number and Colour.

ITEM	EHCL PARTS LIST DESCRIPTION	PART No.	QTY	LENGTH
1*	WALL MOUNT LH	6117 A SILVER	1	1994 mm
	WALL MOUNT RH	6118 A SILVER	1	1994 mm
2	WET ROOM WALL MOUNT(NO SLOT)	5839 A SILVER	1	1994 mm
3*	DOOR GLASS PANEL HINGED		1	
	MODEL 700 644 x 1974mm	6143 DGG PLAIN		
	MODEL 800 744 x 1974mm	6144 DGG PLAIN		
4*	EHCL DOOR SEAL		1	
	MODEL 700	6682 CLEAR		630 mm
	MODEL 800	6683 CLEAR		730 mm
5*	HINGE PANEL GLASS		1	
	MODEL 250 240 x 2000mm	8074 CLEAR PLAIN		
	MODEL 350 340 x 2000mm	8076 CLEAR PLAIN		
	MODEL 450 440 x 2000mm	8030 CLEAR PLAIN		
	MODEL 550 540 x 2000mm	6138 DGG PLAIN		
6	EWCL/EHCL CLOSURE VERTICAL SEAL	6684 CLEAR	2	1990 mm
7	GLASS PANEL BRACKET	8962	1	
8	EHCL R20 PAN L BRACKET	6696 CHROME	1	
9*	PANEL HINGED DOOR CHANNEL		1	
	MODEL 700	6141 A SILVER		671.5 mm
	MODEL 800	6124 A SILVER		771.5 mm
10*	PANEL HINGED THRESHOLD		1	
	MODEL 700	6139 A SILVER		654.5 mm
	MODEL 800	6140 A SILVER		754.5 mm

ITEM	DESCRIPTION	PART No.	QTY	LENGTH
11*	R20 90 DEGREE SIDE PANEL		1	
	MODEL 800 756 x 260 x 2000mm	6134 MGG CLEAR		
	MODEL 900 856 x 260 x 2000mm	6135 MGG CLEAR		
	MODEL 1000 956 x 260 x 2000mm	6136 MGG CLEAR		
12*	DOOR HANDLE		1	
	CURVED BAR HANDLE	6184 AF		
	LINEAR BAR HANDLE	6185 AF		
	TRADITIONAL HANDLE	8632 AF		
13	PANEL HINGE ASSEMBLY	6189 AF	1	
14	EHCL HINGE PANEL BRACKET KIT OF PARTS	8358	1	
15	UNIVERSAL BRACKET FOR SS WALL MOUNT	7291 AF	1	
16	WALL MOUNT & TOP BRACKET PARTS KIT	6178 AF	2	
17	BS- PANEL HINGE PARTS KIT	6180 AF	1	
18	ADJUSTMENT BLOCK GASKET	4561 AF	4	
19	ADJUSTMENT BLOCK	6040 A SILVER	4	
20	HINGE-GLASS INTERFACE(2mm)	6042 BLACK	8	
21	NYLON M8 SLOTTED GRUB SCREW	8634 AF	3	
22	M5 X 8 SOCKET SET SCREW	1273 A SILVER	4	
23	GLASS EDGE PROTECTOR	6091 CLEAR		
24	WALL MOUNT GASKET	1752 AF	2	1994 mm
25	DOOR ASSEMBLY SUPPORT	6053 WHITE	1	
26	DOOR ASSEMBLY BLOCK	6052 WHITE	1	
27	EHCL INSTALLATION INSTRUCTIONS	0956 AF	1	

