

matki | S H O W E R I N G

EAUZONE PLUS

EPIC - HINGED DOOR WITH HINGE PANEL AND INLINE PANEL FOR CORNER

INSTALLATION

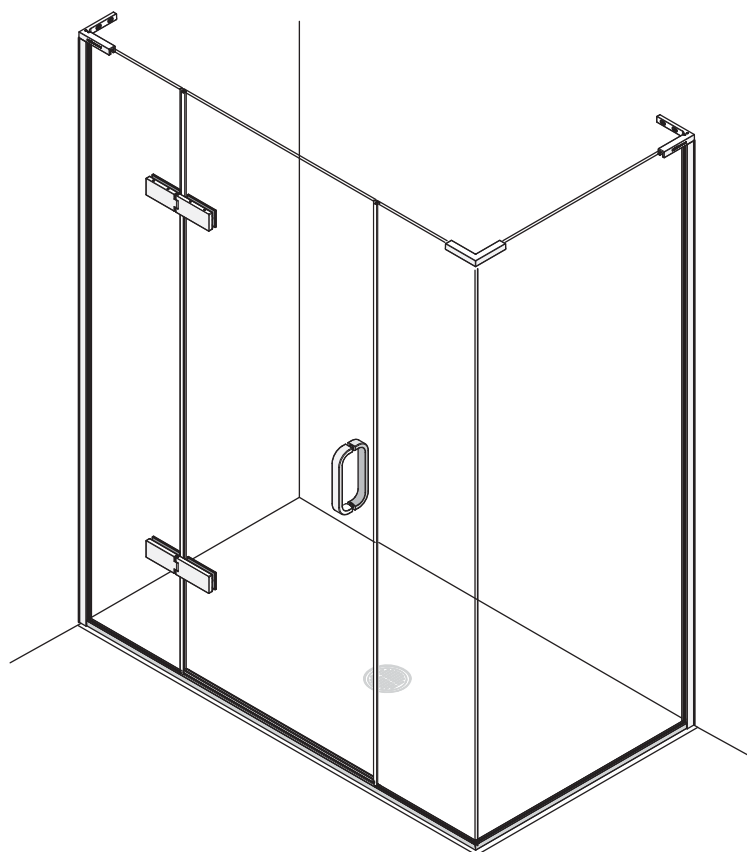
PARTS LIST

BRITISH PATENT NO:2470778

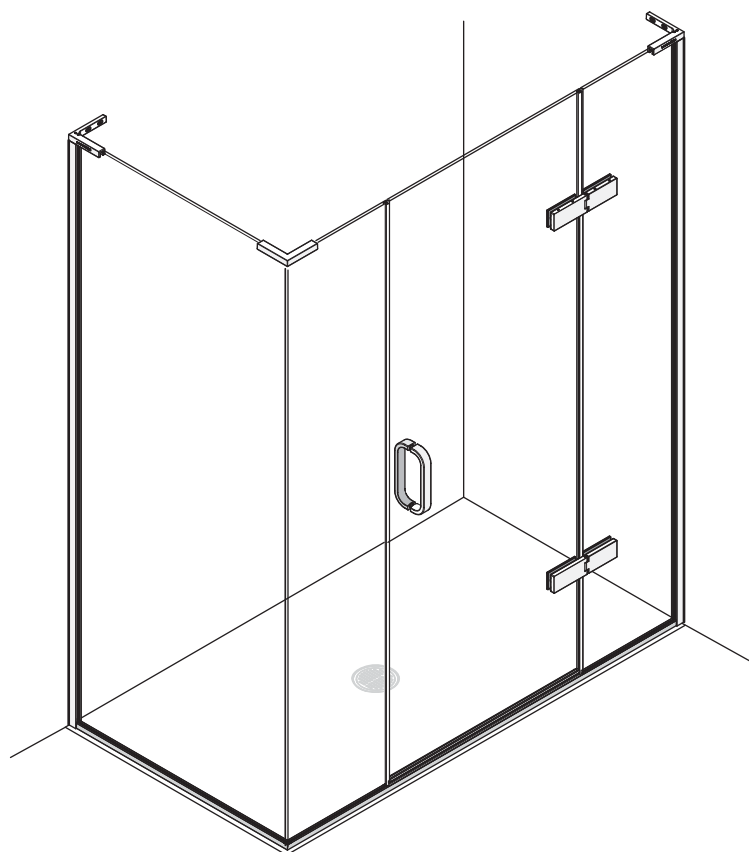


EPIC

MATKI PLC, CHURCHWARD ROAD, YATE, BRISTOL, BS37 5PL
TELEPHONE:01454 328816 (AFTER SALES) FAX:01454 328821 EMAIL: techsupport@matki.co.uk



EPIC LH



EPIC RH

THE STAGES IN THIS INSTALLATION BOOKLET SHOW LH HINGED DOOR INSTALLATION, REVERSE FOR RH.

IMPORTANT

TOOLS REQUIRED

Masonry Drill bit 6mm, Tape Measure, Screw Drivers, Safety Glasses, Electric Drill, Level, Pencil, Adjustable Spanners, Non Slip Gloves

Before disposing of carton and/or commencing assembly, please check all the parts to ascertain that none are missing and they are all undamaged. No claim for missing/damaged parts will be accepted once the packing carton has been disposed of and/or assembly has commenced.

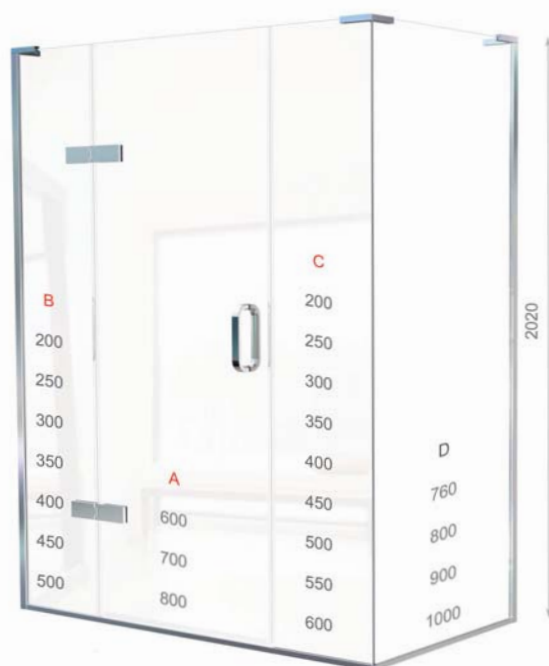
In case of query contact your Stockist with details of model number and details of serial number.

PREPARATION IMPORTANT

1. Please read complete installation instructions before fitting for Enclosure and Tray (if fitting).
2. We recommend that two people are available for fitting of Door and Side panel, Stage 7 - 8. The **Eauzone Plus** range is **10mm Glass** construction. Large glass panels are very heavy. We recommend the use of Safety glasses and Non slip gloves when handling the glass panels.
3. Ensure that the product can be **fixed** to a **solid masonry wall** or suitable **timber stud work grade C16/C24** in the area behind the Wall frames and Panel fixing brackets.
4. Shower trays or tiled floors **must be absolutely level** where enclosures are fitted
5. If fitting a tray we recommend a **drainage test** is carried out before the tray is tiled in position.
6. The assembly should be installed onto a waterproof wall covering and installed after the Tray and wall coverings are in place. Where Tiling lips are provided Trays should be let into the Wall with the Tiling lip flush with the wall to allow the Tiling to overlap the Tiling lip.
7. Seal between tray and tiles. Remove any excess sealant from the area/joint between the tray and the tiles where the Wall Mount is to be fitted. This will ensure the Wall mount fits correctly to the wall and tray/or tiled floor.

CAUTION: TEMPERED GLASS CANNOT BE CUT, POLISHED METAL AND CHROME CAN BE SCRATCHED. CAREFULLY REMOVE ASSEMBLY FROM CARTON, DO NOT PLACE GLASS ON HARD FLOOR OR EXPOSE EDGES TO IMPACT.

DIMENSIONS



Please note: The Standard Panel and Door options are only listed above. If you have a unit with a different mix and match combination of panels, please refer to the Model size and total width e.g. See below other combinations for Model 1200 all have same total width.

	A + B + C	A	B	C
EPIC1200	1167 – 1182	800	200	200
EPIC1200	1167 – 1182	600	400	200
EPIC1200	1167 – 1182	600	200	400

MODEL CORNER DOOR	TOTAL WIDTH (mm) A + B + C	DOOR A	HINGE PANEL B	INLINE PANEL C
EPIC1000	967 - 982	600	200	200
EPIC1100	1067 – 1082	700	200	200
EPIC1150	1117 - 1132	700	250	200
EPIC1200	1167 – 1182	800	200	200
EPIC1250	1217 - 1232	800	250	200
EPIC1300	1267 – 1282	700	200	400
EPIC1350	1317 - 1332	800	300	250
EPIC1400	1367 – 1382	800	200	400
EPIC1450	1417 - 1432	800	300	350
EPIC1500	1467 – 1482	700	400	400
EPIC1550	1517 - 1532	800	350	400
EPIC1600	1567 – 1582	800	400	400
EPIC1650	1617 - 1632	800	400	450
EPIC1700	1667 – 1682	800	450	450
EPIC1750	1717 - 1732	800	500	450
EPIC1800	1767 – 1782	800	500	500
EPIC1850	1817 - 1832	800	500	550
EPIC1900	1867 – 1882	800	500	600
BESPOKE	MAX 1900	MAX 800	MAX 500	MAX 600

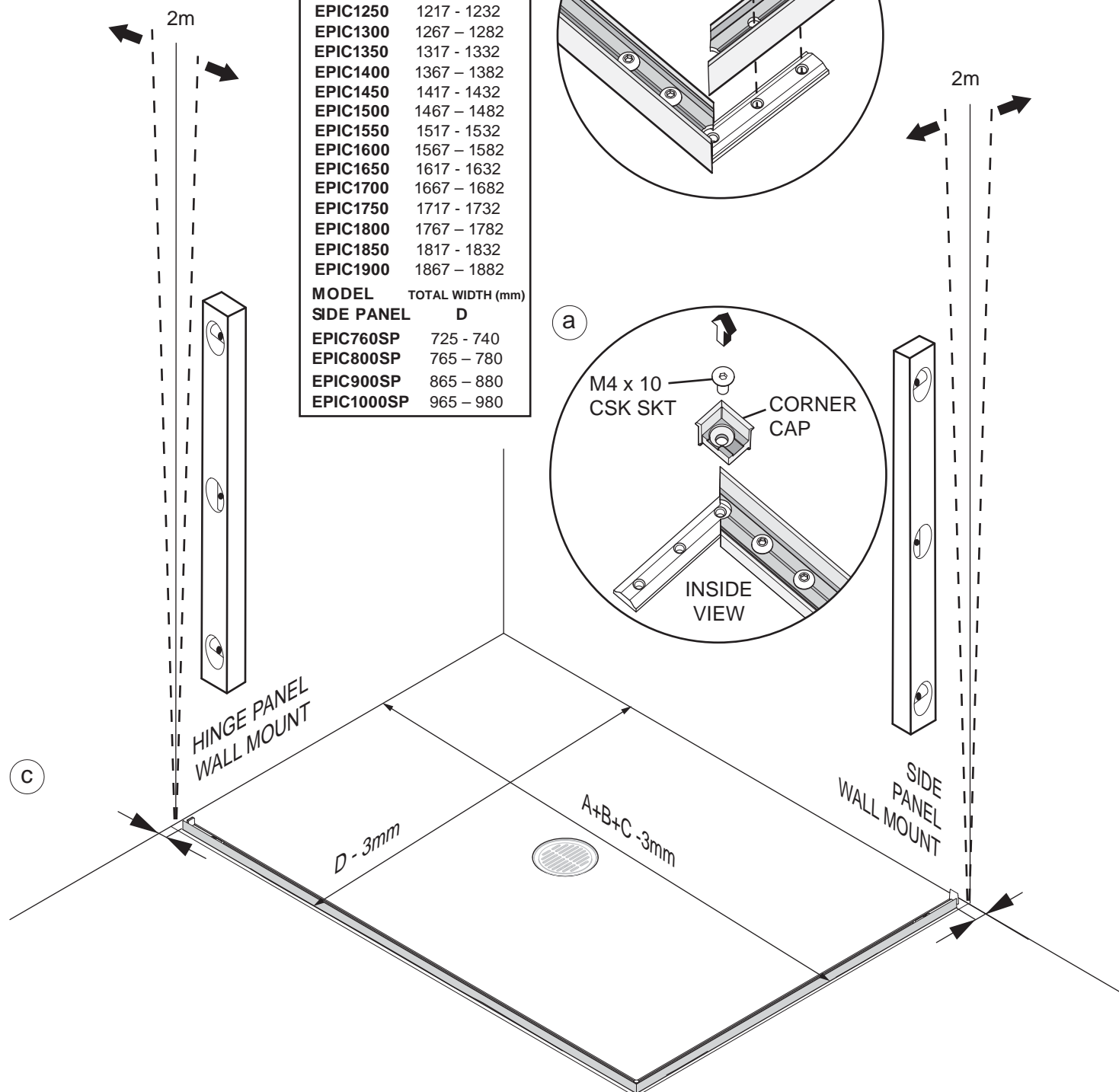
MODEL SIDE PANEL	TOTAL WIDTH (mm) D
EPIC760SP	725 - 740
EPIC800SP	765 – 780
EPIC900SP	865 – 880
EPIC1000SP	965 – 980
BESPOKE	MAX1200

Dimensions are approximate

STAGE 1

MODEL	TOTAL WIDTH (mm) A + B + C
EPIC1000	967 - 982
EPIC1100	1067 - 1082
EPIC1150	1117 - 1132
EPIC1200	1167 - 1182
EPIC1250	1217 - 1232
EPIC1300	1267 - 1282
EPIC1350	1317 - 1332
EPIC1400	1367 - 1382
EPIC1450	1417 - 1432
EPIC1500	1467 - 1482
EPIC1550	1517 - 1532
EPIC1600	1567 - 1582
EPIC1650	1617 - 1632
EPIC1700	1667 - 1682
EPIC1750	1717 - 1732
EPIC1800	1767 - 1782
EPIC1850	1817 - 1832
EPIC1900	1867 - 1882

MODEL	TOTAL WIDTH (mm) D
EPIC760SP	725 - 740
EPIC800SP	765 - 780
EPIC900SP	865 - 880
EPIC1000SP	965 - 980



This stage is describing the placement of the Threshold track.

Important: Check the walls for upright before positioning the threshold track. If the wall is leaning **outward** at the top adjust the threshold dimension inwards to maximise the adjustment range. If the wall is leaning **inwards** at the top adjust the threshold track outwards to maximise the adjustment range.

a. Remove and set aside the pre-assembled Threshold corner cap and fixing.

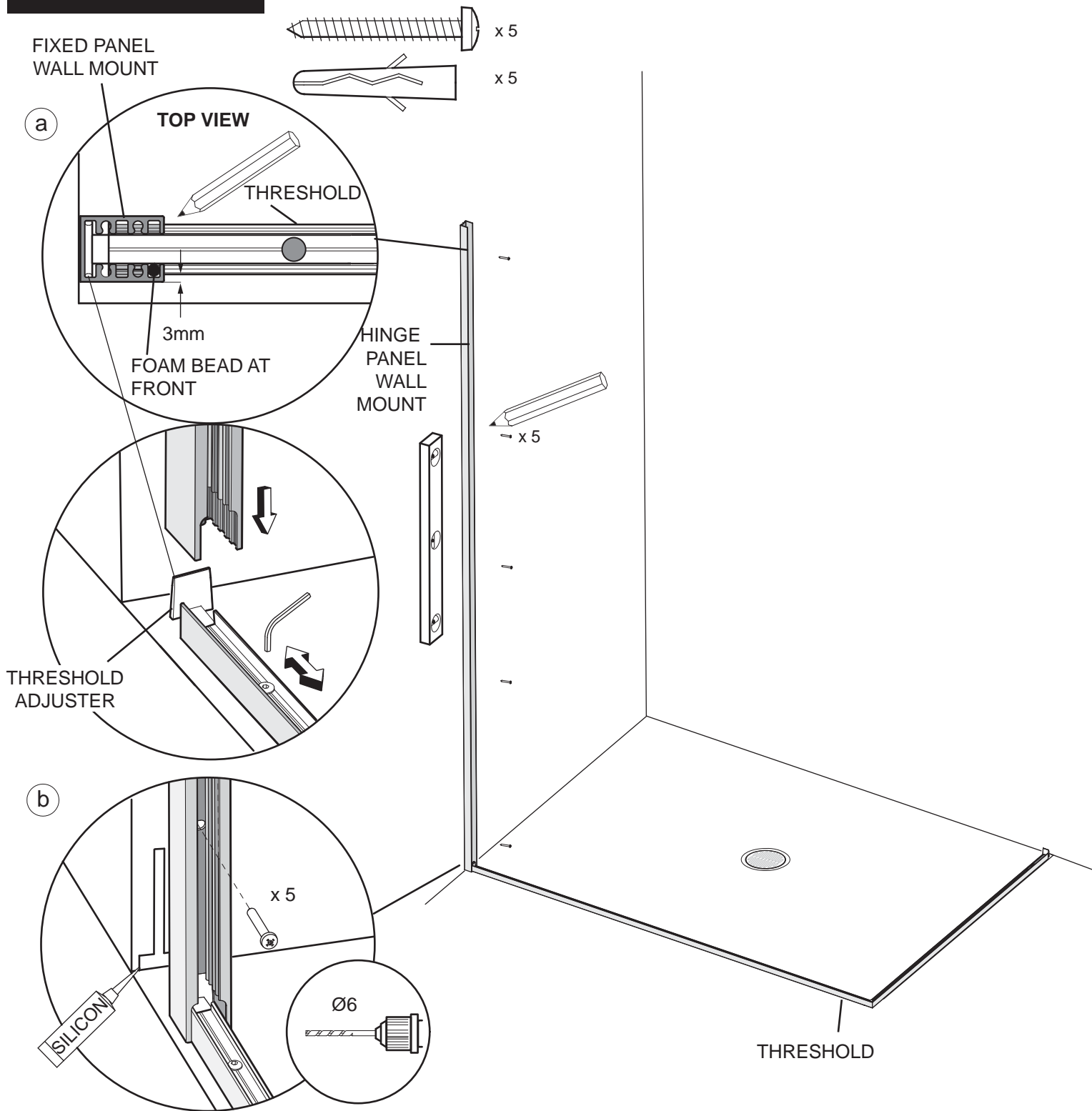
b. Fix the Threshold mitred ends together using the M4 x 6 socket domed screws, pre-assembled to the Threshold fixing bracket. The Threshold should be at an angle of 90°

c. Place the Threshold assembly onto the Tray/floor surface. Measure and mark the distance from the Wall to the outside face of the Threshold. The table of dimensions show overall product width to outside of Wall mounts, for the distance to the outside of the Threshold track remove distances on diagram **c.** above. **Check walls are plumb.**

The Panel hinged corner door has adjustable Wall mounts to compensate for out of plumb walls. There is 15mm of adjustment in both the Hinge panel wall mount and Side panel wall mount. If walls are out of plumb ensure placement of Threshold allows for the out of plumb walls.

STAGE 2

IMAGES SHOW LH PANEL HINGED DOOR INSTALLATION REVERSE FOR RH.

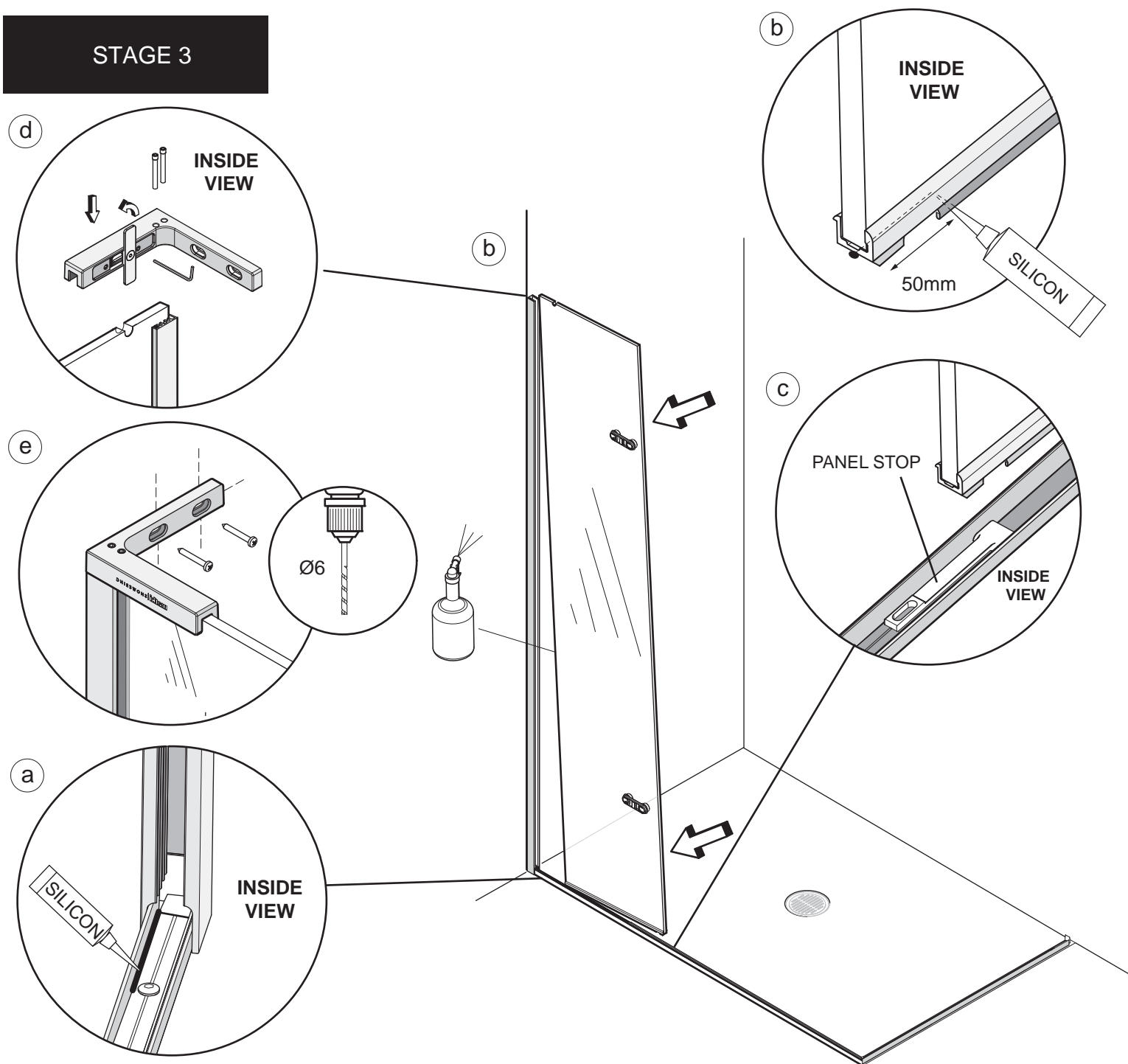


This stage is describing the fitting of the Hinge panel wall mount

a. Place the Horizontal Threshold into position on tray. (If fitting close to the front edge of the tray take into account that the front face of the Hinge panel wall mount sits 3mm in front of the Threshold). Position the Hinge panel wall mount on to the Wall over Threshold (Wall Mount has a top and bottom, Threshold cut-out should be at bottom). Ensure the Threshold adjuster fits up into the back of the Wall mount extrusion in the recess as shown. Adjust position of Threshold adjuster as required, to adjust loosen screw only 1/2 a turn, re-tighten after adjustment, do not over tighten. Plumb the Wall Mount for upright and mark the fixing holes in the centre of the slots.

b. Drill 5 x fixing holes in the wall and insert Wall plugs. Clean area and apply Silicon Sealant to the area behind the Wall mount between the tray and tiles and 100mm up the Wall, central to the width of the Wall mount. Fit the Wall mount using the No.8 x 32mm Pan Head Screws

STAGE 3



This stage is describing the fitting of the Hinge panel.

a. Apply a bead of Silicon along the front inside edge of the Threshold up to the adjuster screw.

b. IMPORTANT - Before fitting the Hinge panel, at the hinge side of the panel apply a 50mm bead of Silicon sealant central to the underside of the extrusion. Lightly wet the edge of the Hinge panel with soapy water and gently lower the panel into the Wall mount and Threshold extrusion. Push the top of the panel into the Wall mount first, followed by the bottom.

c. Before the Panel is fully fitted into the Threshold extrusion, place the Panel Stop under the section bonded to the Hinge panel aligning the larger end of the stop, rounded face up, with the cut out in the extrusion.

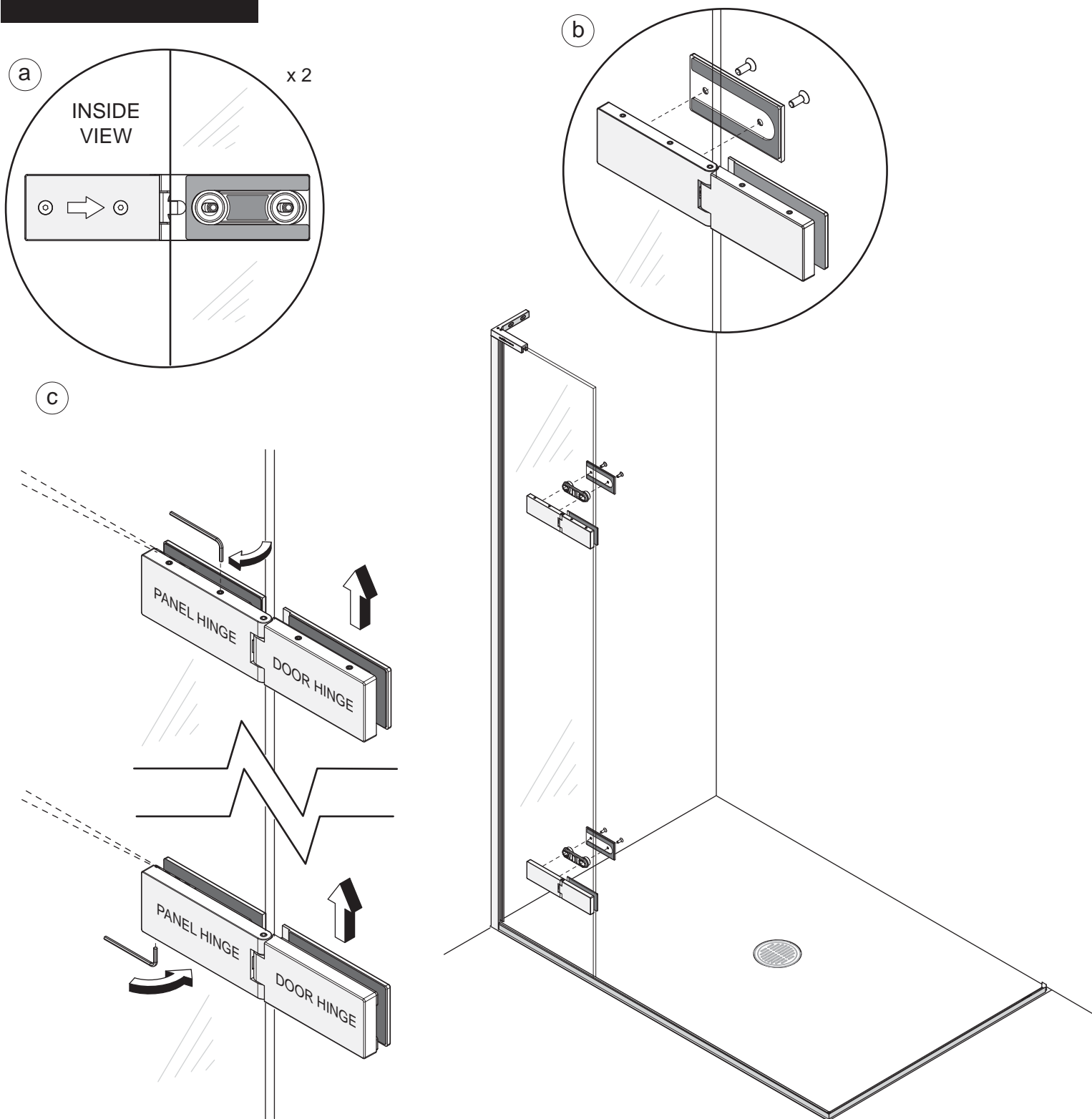
d. Fitting of Hinge panel top bracket: Loosen the Countersunk socket screw in the Top bracket back plate until the Back plate can be rotated. Rotate the Back plate 180° to vertical. The plate should now adjust left to right, moving the Glass stop and Glass gasket with it. Carefully fit the Top Bracket over the glass panel, the Glass stop should fit into the notch in the top of the Hinge panel.

e. Mark the centre of the slotted holes in the Top bracket onto the Wall, remove the Top Bracket and drill and fix the wall plugs.

d. Re fit the Top Bracket. Fit the 2 x Socket cap screws through the Top Bracket into the extrusion. Tighten the 2 off M5 x 4 Socket set screws (do not over tighten). Rotate the Back plate to fit into the Top bracket recess and re fit the Countersunk socket screw (do not over tighten).

e. Fix the Top Bracket to the Wall using the No.8 x 32 Pan Head screws.

STAGE 4



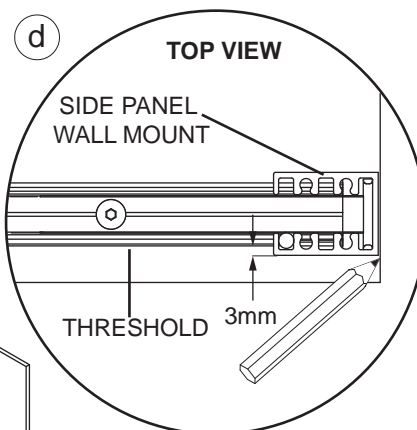
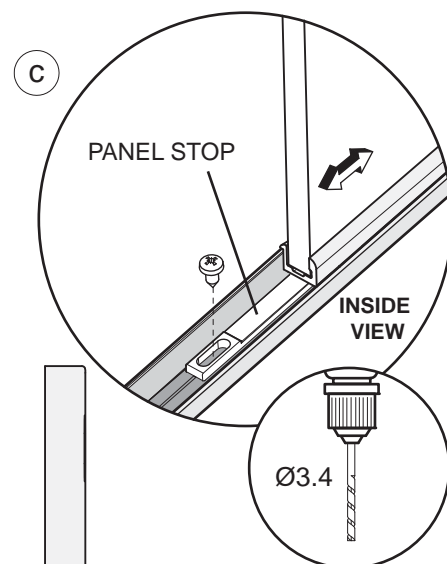
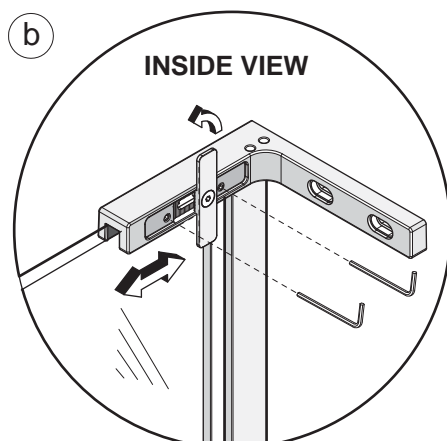
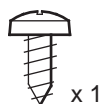
This stage is describing the fitting of the Hinges to the Hinge panel.

a. Remove and set aside the Hinge panel back plates from the Hinge assemblies (**Hinge panel = female side of the Hinges, Door = male**). Place the upper Hinge assembly on to the face of the Hinge panel glass over the Adjuster block (factory fitted). (The Hinges are handed top and bottom, ensure the Socket set screws are visible on the top of the top Hinge and on the underside of the lower Hinge). Push the Hinge assembly so that it is fully adjusted over towards the Hinge panel wall side.

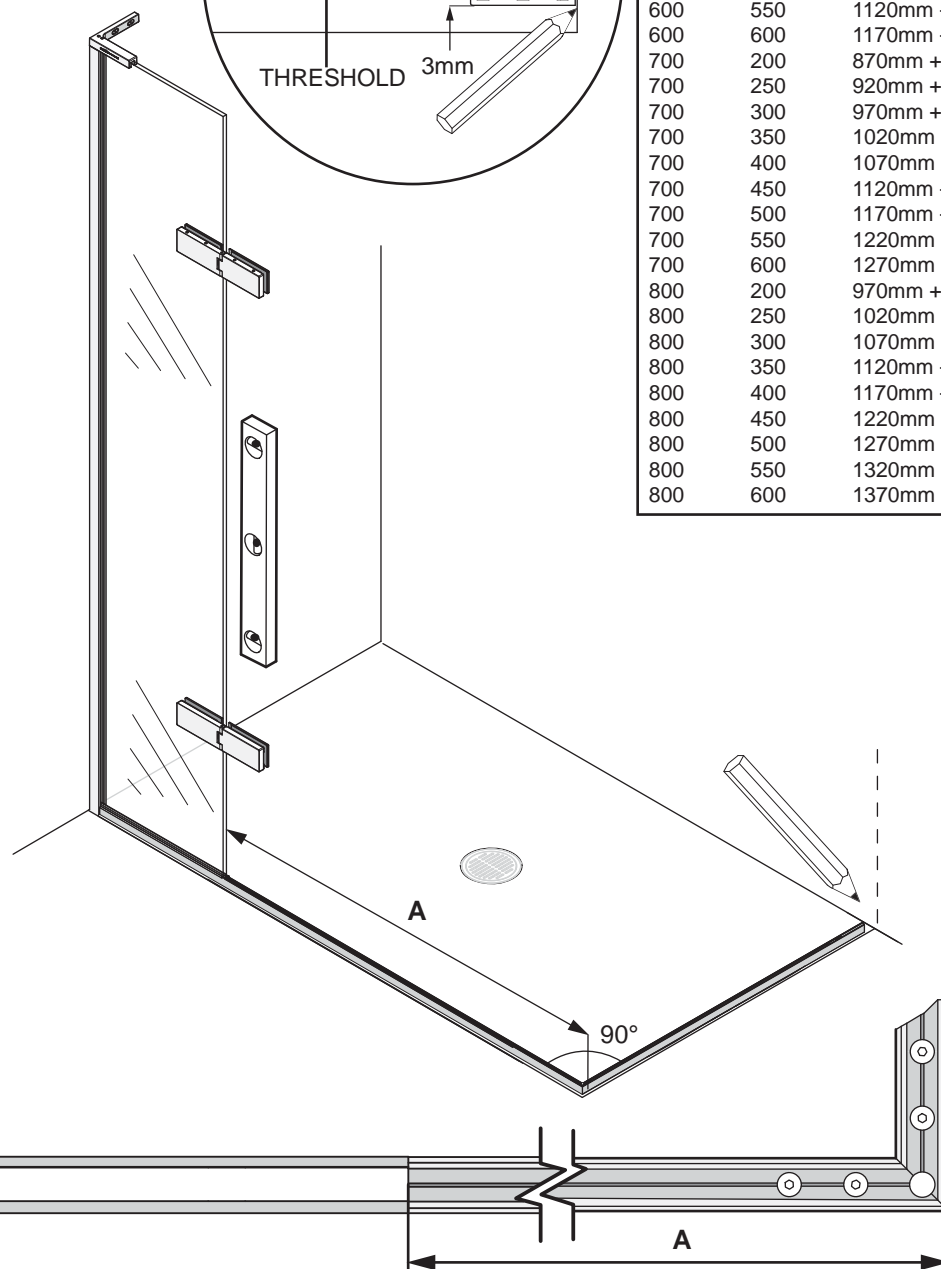
b. Re-fit the Back plate to fix the Hinge assembly to Hinge panel glass. Repeat for the Lower hinge assembly.

c. On the Hinge panel side of the Hinge assemblies - Tighten down the top inner Socket set screw on the upper Hinge and the underside outer Socket set screw on the lower hinge to lift the Hinge upwards. **We recommend that you angle the Hinges slightly upwards towards the Door side to allow the Hinge to be adjusted downward to horizontal when the Door is fitted.**

STAGE 5



Door	Inline Panel	Dimension A
600	200	770mm +5 -0
600	250	820mm +5 -0
600	300	870mm +5 -0
600	350	920mm +5 -0
600	400	970mm +5 -0
600	450	1020mm +5 -0
600	500	1070mm +5 -0
600	550	1120mm +5 -0
600	600	1170mm +5 -0
700	200	870mm +5 -0
700	250	920mm +5 -0
700	300	970mm +5 -0
700	350	1020mm +5 -0
700	400	1070mm +5 -0
700	450	1120mm +5 -0
700	500	1170mm +5 -0
700	550	1220mm +5 -0
700	600	1270mm +5 -0
800	200	970mm +5 -0
800	250	1020mm +5 -0
800	300	1070mm +5 -0
800	350	1120mm +5 -0
800	400	1170mm +5 -0
800	450	1220mm +5 -0
800	500	1270mm +5 -0
800	550	1320mm +5 -0
800	600	1370mm +5 -0



This stage is describing the adjusting of the Door opening and position of Side panel wall mount.

a. Measure the distance of the door opening between the edge of the Hinge panel glass and outside face of the Threshold assembly. This dimension should be within the tolerance of the specified dimension A above, depending on the Panel and Door model sizes. (To check glass model sizes, measure widths of glass and round up to the nearest 100, for example Door width 760mm = Door model 800). Using a level ensure the Hinge panel is upright.

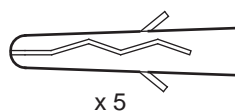
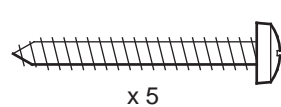
If adjustment is needed, the Hinge panel can be adjusted out of the Wall mount by 15mm. Once the panel is in position, drill and fix the Panel stop in the centre of the slotted hole using the No.8 x 9.5 Pan head screw (c).

b. To adjust out the Hinge panel at the top - Rotate the Top bracket back plate to vertical. Loosen the 2 M5 x 4 Socket set screws and adjust the panel. Plumb for upright, retighten the Socket sets screws and rotate the Back plate into position and tighten.

c. To adjust out the Hinge panel at the bottom - Adjust the panel, plumb for upright. Drill and fix the Panel stop in the centre of the slotted hole using the No.8 x 9.5 Pan head screw.

d. Check that the Threshold assembly is at a 90° angle. Using the Threshold as a guide mark the position of the Side panel wall mount. As a guide the outside face of the Threshold is 3mm away from the outside face of the Side panel wall mount.

STAGE 6



FIXED PANEL
WALL MOUNT

TOP VIEW

THRESHOLD

3mm

FOAM BEAD AT
FRONT

THRESHOLD
ADJUSTER

b

x 5

Ø6

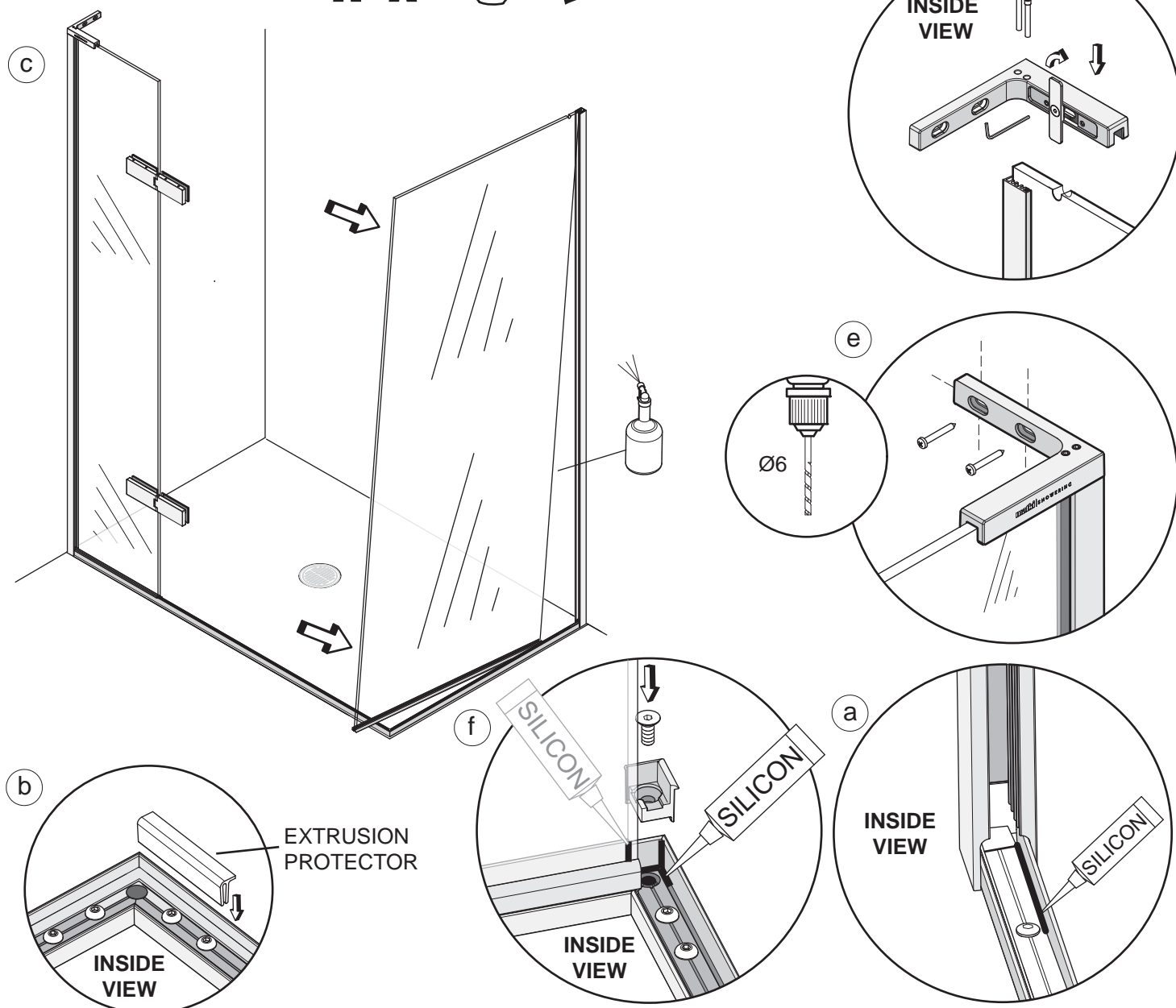
SILICON

This stage is describing the fitting of the Side panel wall mount.

a. Position the Side panel wall mount over the Threshold in the position marked on the previous stage. Ensure the Threshold adjuster fits up into the back of the Wall mount extrusion in the recess as shown. Adjust position of Threshold adjuster as required, to adjust loosen screw only 1/2 a turn, re-tighten after adjustment, do not over tighten. Plumb the Wall Mount for upright and mark the fixing holes in the centre of the slots.

b. Drill 5 x fixing holes in the wall and insert Wall plugs. Clean the area and apply Silicon Sealant to the area behind the Wall mount between the tray and tiles and 100mm up the Wall, central to the width of the Wall mount. Fit the Wall mount using the No.8 x 32mm Pan Head Screws

STAGE 7

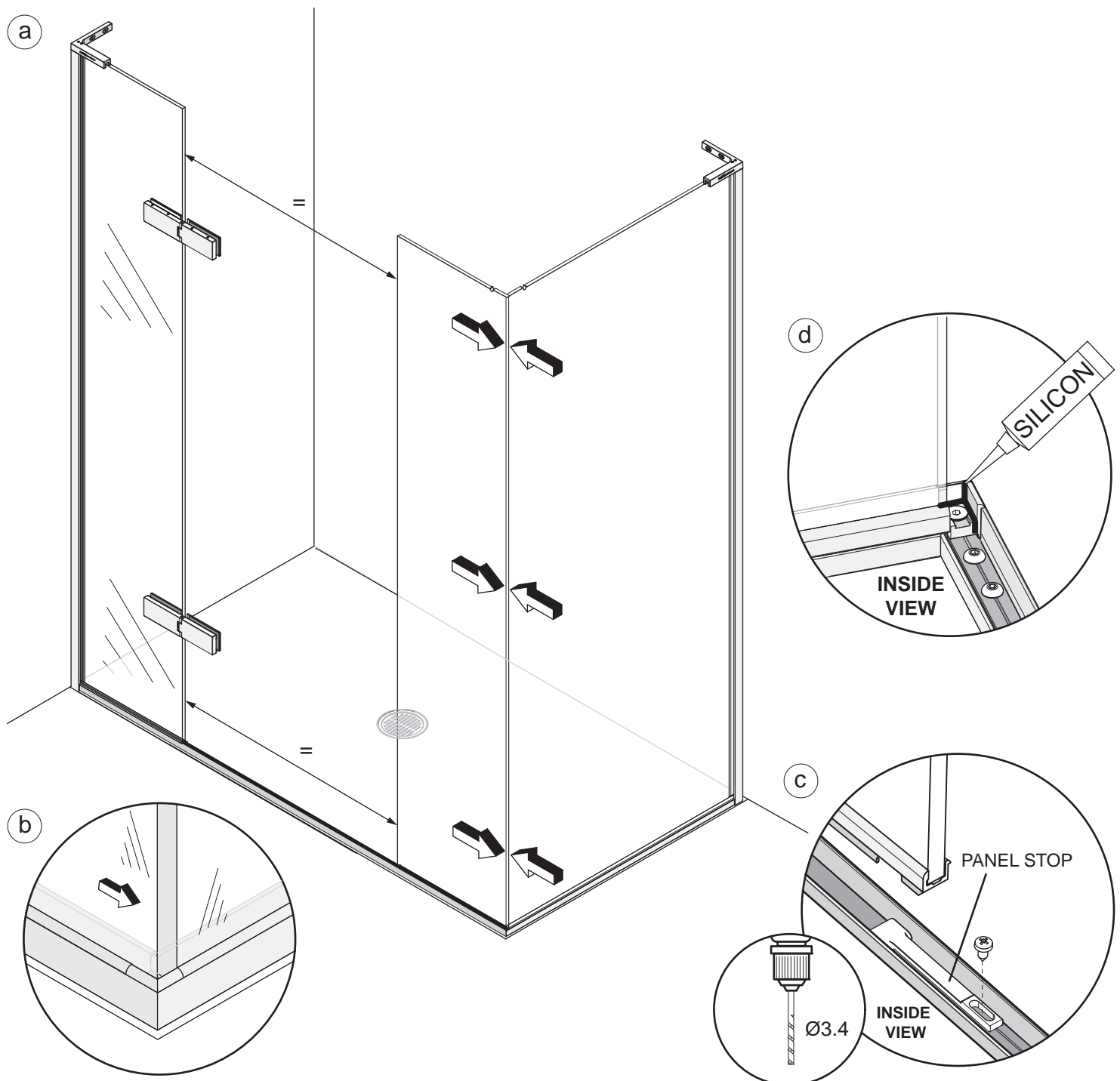


This stage is describing the fitting of the Side panel. We recommend 2 people are available for this stage, and the use of Safety glasses and Non slip gloves when handling glass panels.

- a.** Apply a bead of Silicon along the front inside edge of the Threshold up to the adjuster screw.
- b.** To protect the outside edge of the Threshold from damage when fitting the Side panel glass, fit the Extrusion protector supplied.
- c.** Lightly wet the edge of the Side panel with soapy water and gently lower the panel into the Wall mount and Threshold extrusion. Push the top of the panel into the Wall mount first, followed by the bottom. Position Side panel so that the Threshold corner cap can be fitted in front of the Side panel as shown in (f).
- d. Fitting of Side panel top bracket:** Loosen the Countersunk socket screw in the Top bracket back plate until the Back plate can be rotated. Rotate the Back plate 180° to vertical. The plate should now adjust left to right, moving the Glass stop and Glass gasket with it. Carefully fit the Top Bracket over the glass panel, the Glass stop should fit into the notch in the top of the Side panel.
- e.** Mark the centre of the slotted holes in the Top bracket onto the Wall, remove the Top Bracket and drill and fix the wall plugs.
- d.** Re fit the Top Bracket. Fit the 2 x Socket cap screws through the Top Bracket into the extrusion. Tighten the 2 off M5 x 4 Socket set screws (do not over tighten). Rotate the Back plate to fit into the Top bracket recess and re fit the Countersunk socket screw (do not over tighten).
- e.** Fix the Top Bracket to the Wall using the No.8 x 32 Pan Head screws.
- f.** Remove the Extrusion protector. Apply a bead of Silicon on the inside corner of the Threshold assembly where the Corner cap is to be fitted. Apply a bead in the hole where the Corner cap fixing is to be fitted and to the end of the Glass extrusion on the outer face as shown above. Fit the Corner cap using the M4 x 10 Csk Skt screw.

STAGE 8

PREPARING THE INLINE PANEL

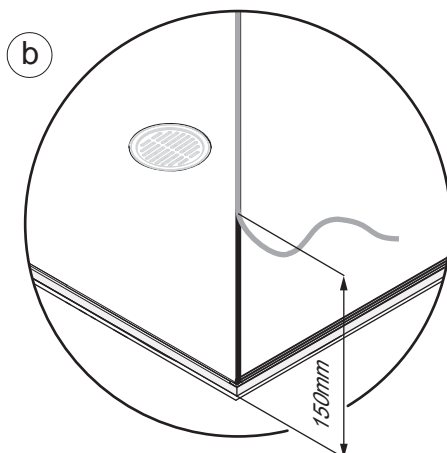
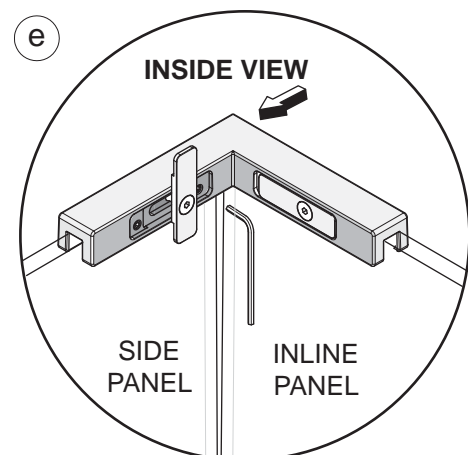
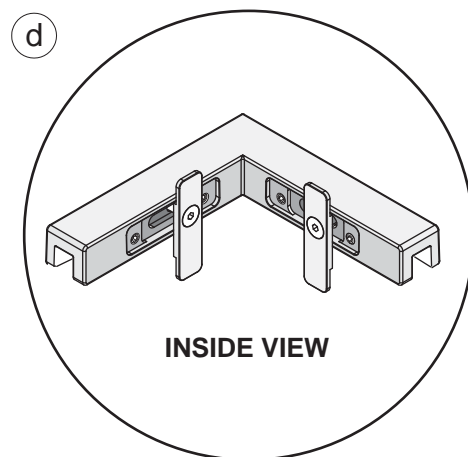
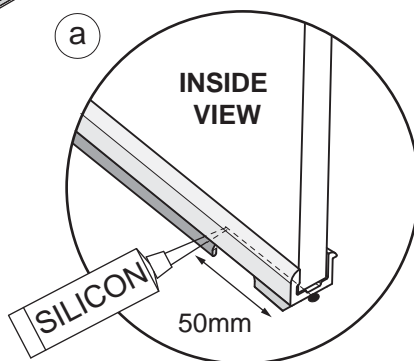
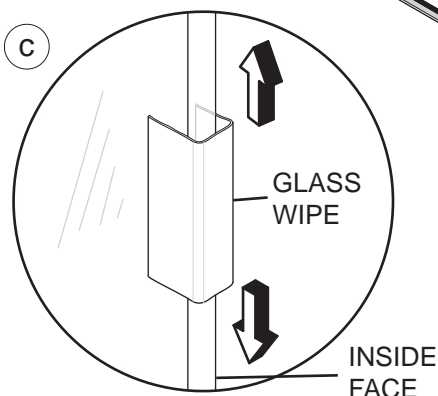
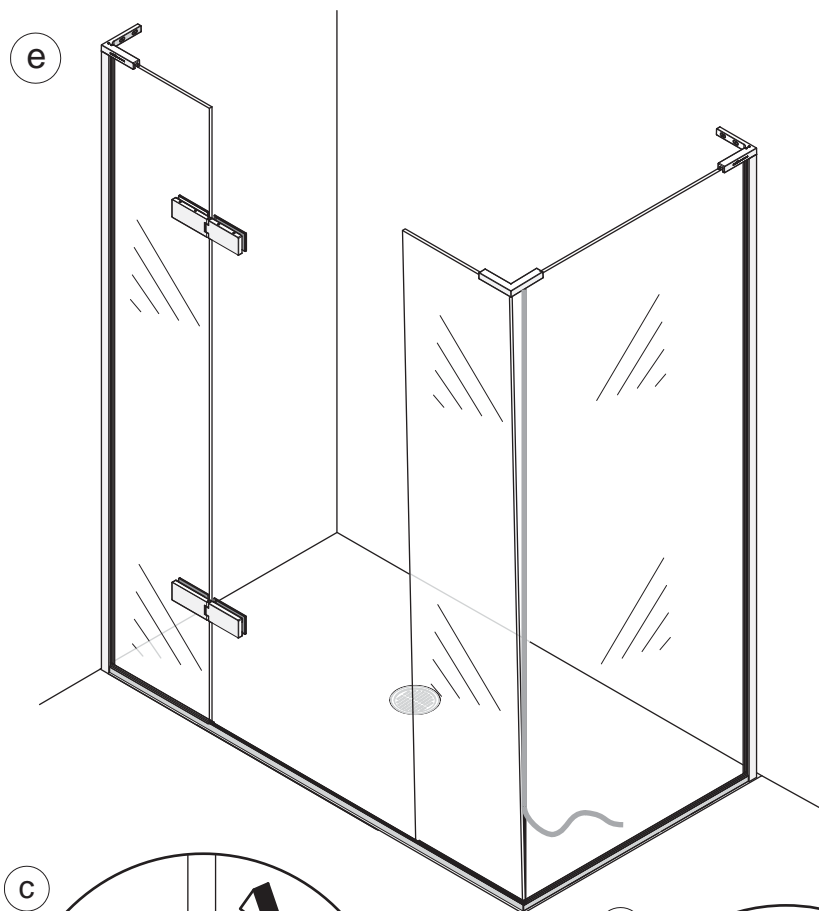


This stage is describing the preparation for the fitting of the Inline panel.

- a.** Carefully place the Inline panel glass down into the Threshold extrusion and up to the edge of the Side panel glass. Check the face of the Side panel is parallel to the edge of the Inline panel. If adjustment is needed, a small amount of pressure can be applied to the Side panel glass to help it meet the edge of the Inline panel when bonding with the tape in the next stage.
- b.** Ensure the Inline panel is pushed fully up to the face of the Threshold corner cap.
- c.** Check that the distance between the top and bottom of the Door opening is equal (the clip in Infill track can be used as a guide to the door opening distance). Place the Panel Stop under the section bonded to the Inline Closure panel aligning the larger end of the stop, rounded face up, with the cut out in the extrusion. Once the panel is in position mark the centre of the slot in the Panel stop. Remove the Inline panel and drill and fix the Panel stop using the No.8 x 9.5 Pan head screw.
- d.** Apply a bead of Silicon to the inside corners of the Threshold corner cap and down the face where the Inline panel will touch.

STAGE 9

FITTING THE INLINE PANEL



This stage is describing the fitting of the Inline panel.

a. IMPORTANT - Before fitting the Fixed panel, at the opening side of the panel apply a 50mm bead of Silicon sealant central to the underside of the extrusion.

b. Before fitting the Inline corner panel, peel back approximately 150mm of the yellow backing film from the Bonding tape that is on the edge of the Side panel. Peel the backing film from the bottom upwards to aid removal of the film once Inline panel is in position.

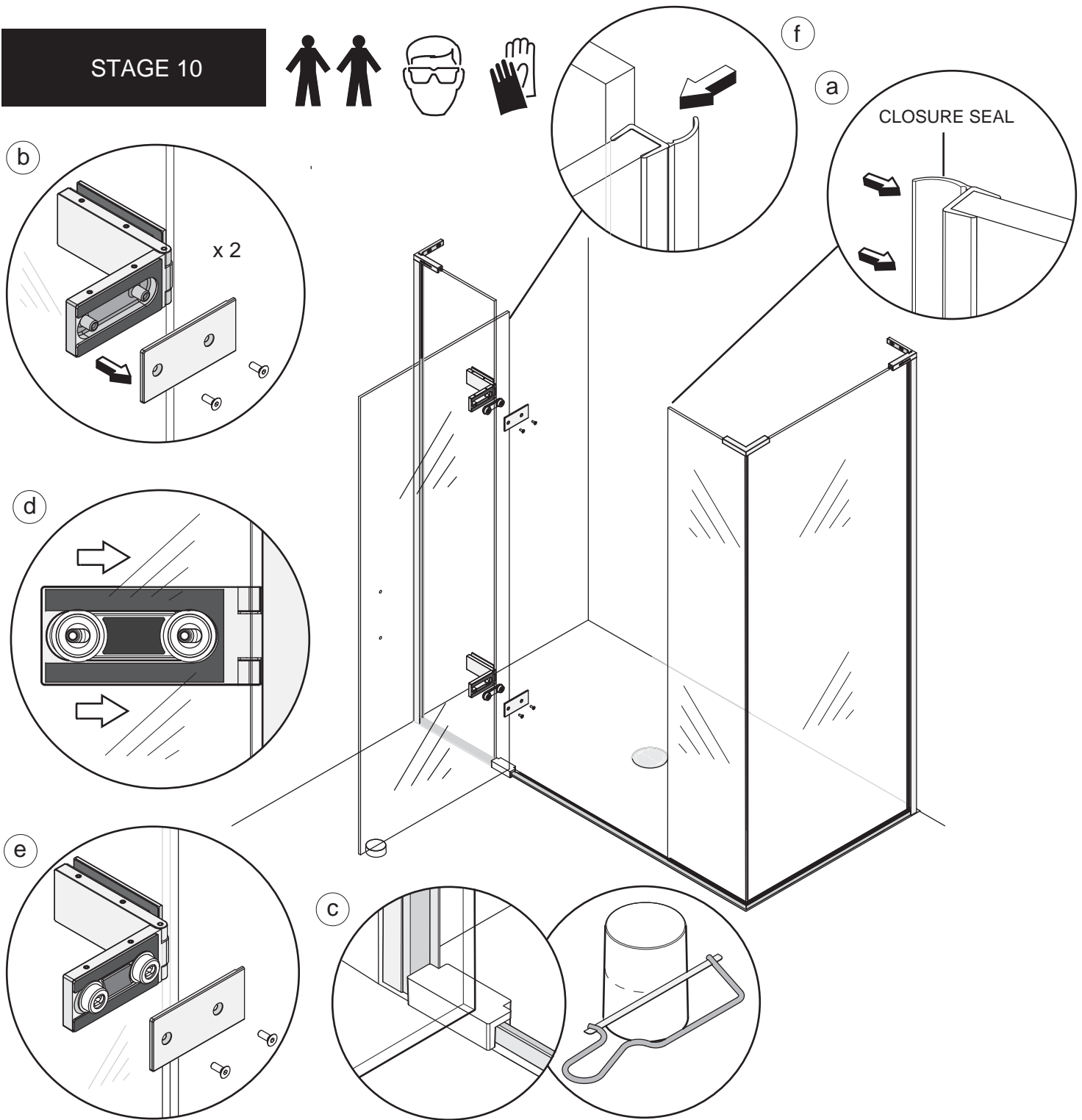
c. Before fitting the Inline corner panel, clean the face of the Inline panel glass that will be bonded to the Side panel using the cleaning wipe supplied.

d. Loosen the Countersunk socket screw in the Corner bracket back plate until the Back plates can be rotated. Rotate the Back plate 180° to vertical. The plate should now adjust left to right, moving the Glass stop and Glass gasket with it.

e. Carefully re-fit the Inline glass panel into position ensuring it is fully pushed into the corner cap at the bottom. Fit the Corner Bracket, the bracket should locate in the notches in the top edge of the glass panels. Check that the bracket is correctly aligned with the outside edge of the Inline panel at the top, this will guide the panels accurately together at the top. Secure the Corner Bracket **only** to the Inline panel by tightening the 2 off Socket sets screws (do not over tighten) on the back of the Bracket. Rotate the Back plate on the Inline panel into the recess and tighten the Countersunk socket screw. The Side panel Set screws are left loose at this stage to allow the Corner bracket to move along the Side panel.

e. Final bonding of corner joint between panels: Carefully move the Inline panel away from the Side panel at the top, maximum gap 15mm, to create a 'V' shaped gap between the Inline panel and Side panel. Slowly remove the backing film from the removed edge working upwards aligning the glass face and edge. Press the glass together as the backing film is removed, when 300mm from the top remove all the backing film and press firmly together. Tighten the 2 set screws in the Side panel face of the Corner bracket and replace the Back plate using the Countersunk socket screw. Allow 12 hours for the bond to cure fully before showering.

STAGE 10



This stage is describing the hanging of the Door.

a. Push fit the Door Closure seal to the edge of the Fixed panel.

b. Remove and set aside the Hinge back plates on door side of the Hinges.

c. Place the Door assembly block over the track on the Hinge side of the Door opening. The tubular Door support can be used to support the other end of the door. Measure and mark the Door support so that the top is parallel with the top of the Door assembly block. Cut to size as required using a Hacksaw. Note: Glass can break, please handle carefully and do not place on/against a hard surface.

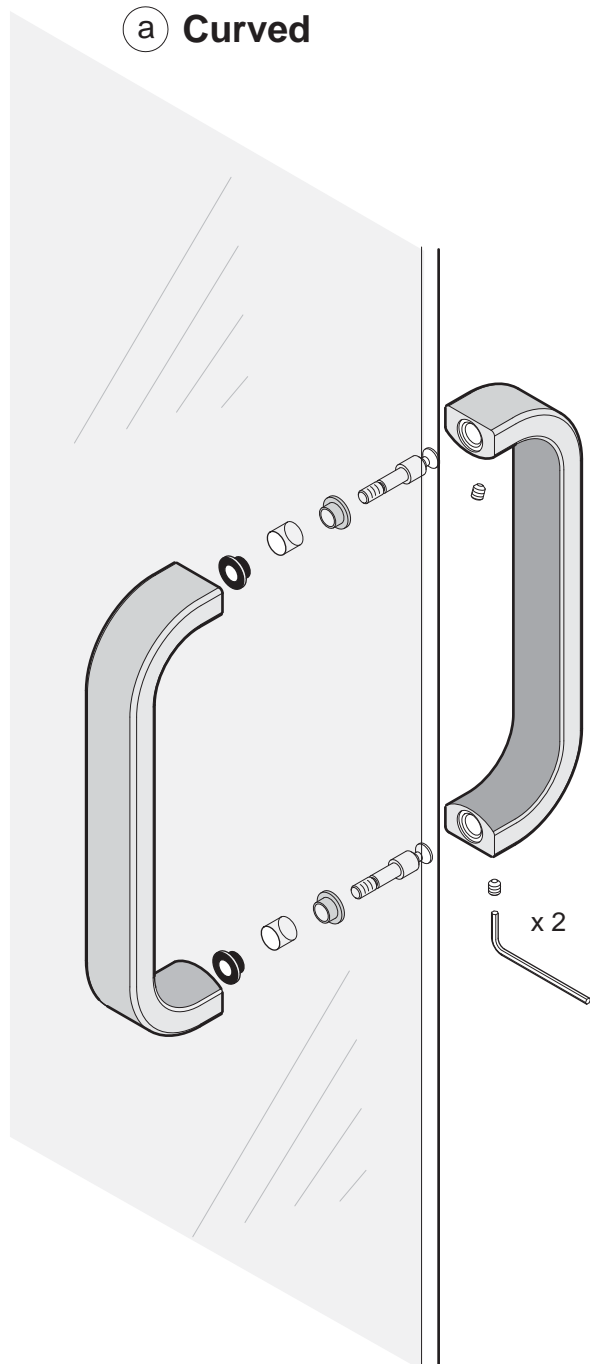
d. We recommend 2 people are available for this stage and the use of Safety glasses and Non slip gloves when handling glass panels - Carefully lift the Door onto the Hinges, ensuring the Adjustment blocks fitted to the glass are on the Hinge side. The Door support and assembly block will now help to align the Door glass with the Hinges. The door has left to right adjustment, push the Door glass fully towards the inside of the enclosure (on minimum adjustment)

e. Re-fit the back plates.

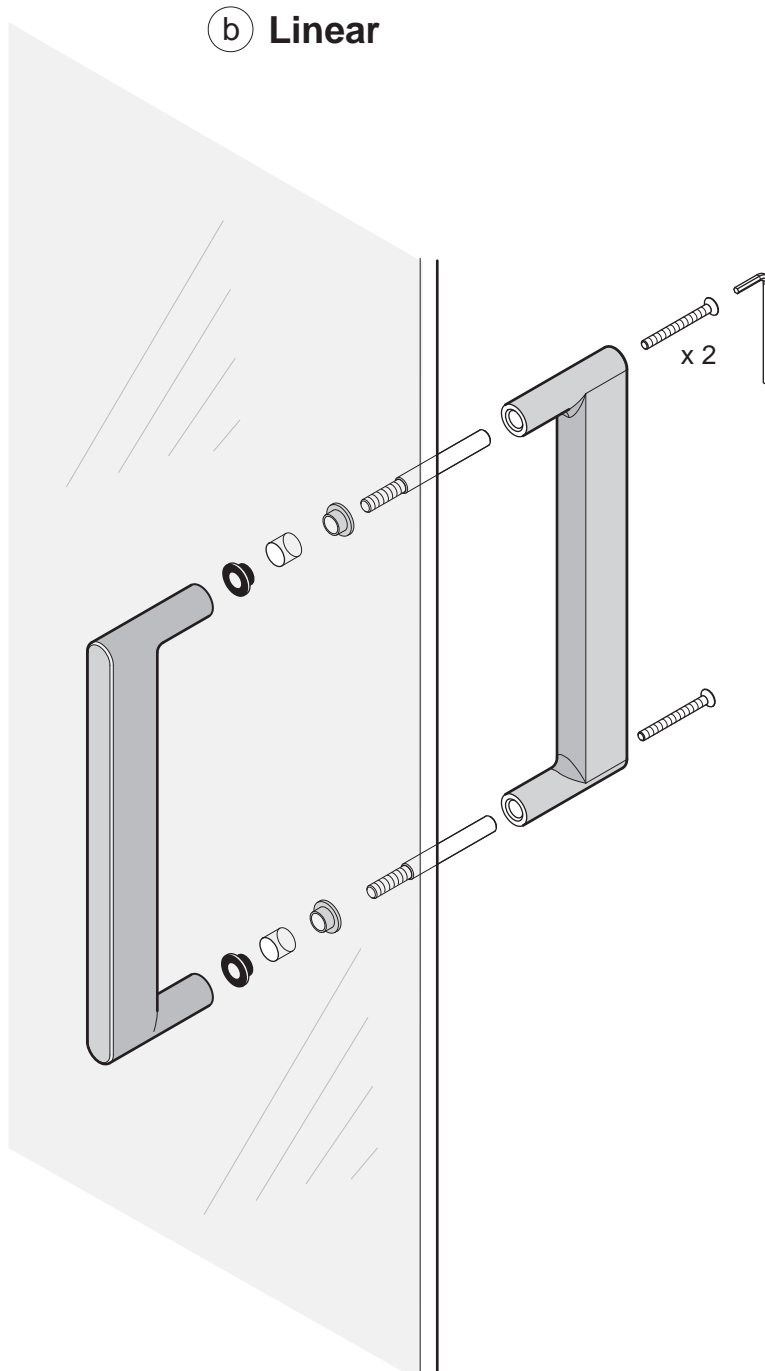
f. Push fit the Door seal to the Hinge side of the Door.

STAGE 11

a Curved



b Linear

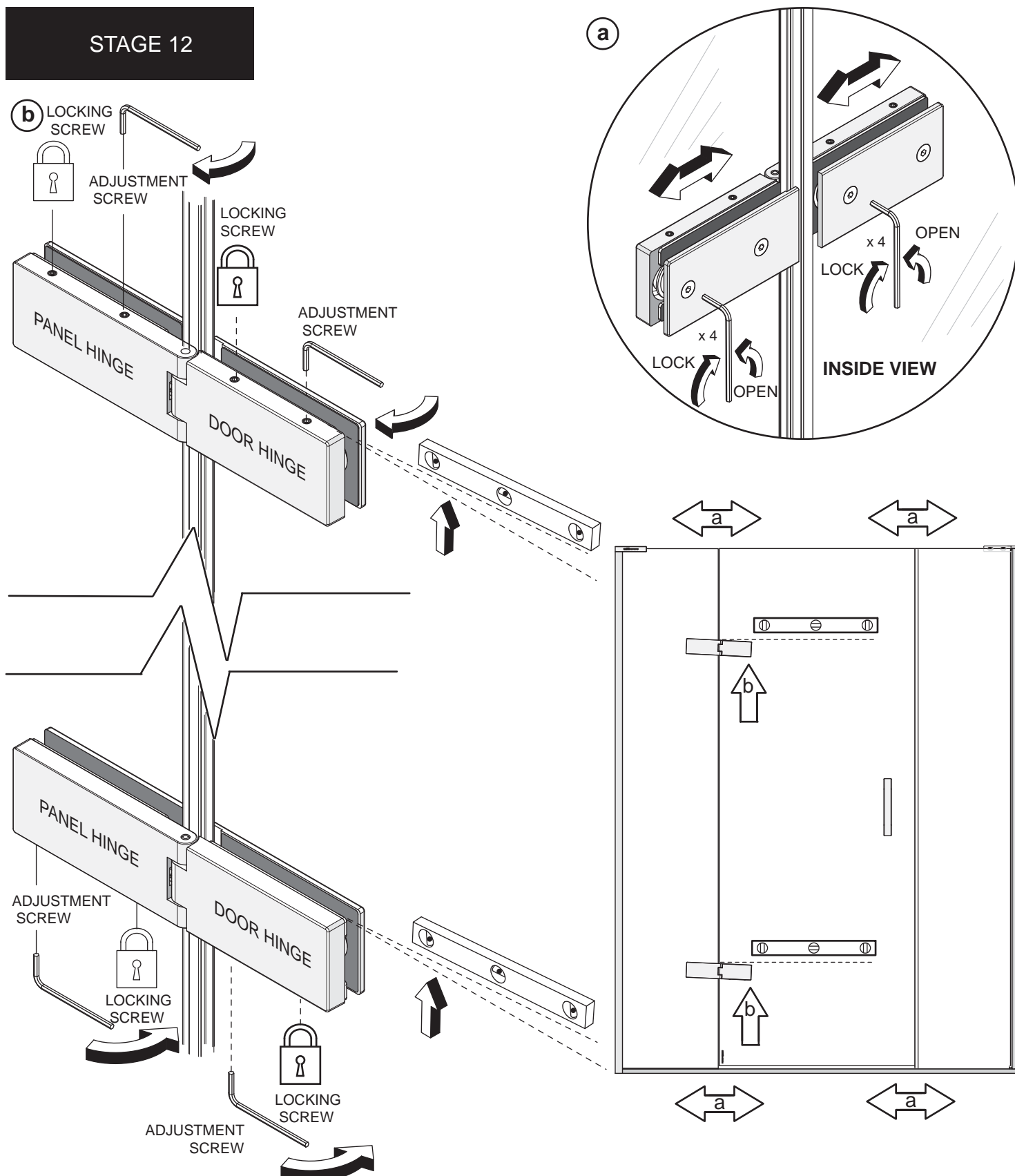


This stage is describing the fitting of the Door Handle

a. Curved Handle only - Disassemble the handle by loosening the 2 x M5 x 6 Socket set screws on the underside of the inside Handle. Unscrew the 2 x Handle connectors. Place the 4 x black glass washers either side of the 2 holes in the Door glass. Place the front Handle up to the outside of the glass screwing through the Handle connectors from the inside to hold the front Handle in position. Once the front Handle is secure, place the back Handle onto the Handle connectors, secure in position by tightening the 2 x Socket set screws on the underside of the back Handle.

b. Linear Handle only - Disassemble the handle by unscrewing the 2 x M4 x 40 Csk socket screws and removing the back handle. Place the 4 x black glass washers either side of the 2 holes in the Door glass. Carefully fit the front Handle and Handle connectors through the 2 holes in the Door glass. Fit the back Handle onto the Handle connectors and fix into position by fitting the 2 x M4 x 40 Csk socket screws.

STAGE 12

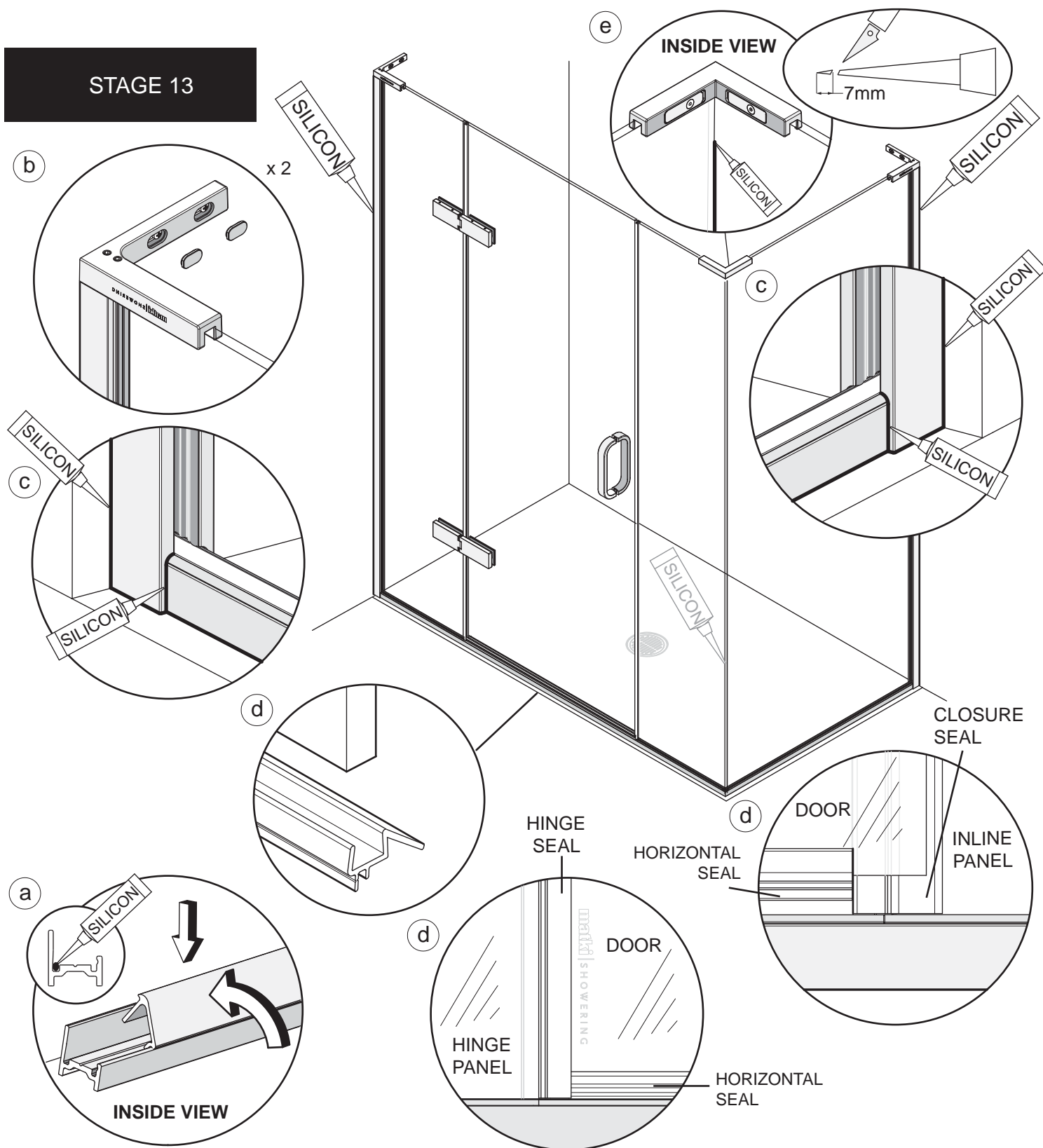


This stage is describing the Door adjustment

a. The Door glass can be adjusted left to right to open/close the distance between the edge of the Door glass and the Closure seal and also the edge of the Door glass and the Hinge seal. Loosen the 4 x M6 x 16 Csk socket screws in the back of the Door side of the hinges, adjust the Door left or right. Retighten the 4 x Csk socket screws. Repeat if necessary on the Hinge panel side of the hinges.

b. To lift the Hinges on the Door side, tighten down the top outer Socket set screw on the upper Door hinge and the underside inner Socket set screw on the lower Door hinge. Lock the Door hinge in position by tightening the top inner Socket set screw and the underside outer Socket set screw on the lower Hinge. To lift the Hinges on the panel side, tighten down the top inner Socket set screw on the upper Panel hinge and the underside outer Socket set screw on the lower Panel hinge. Lock the Panel hinge in position by tightening the top outer Socket set screw and the underside inner Socket set screw on the lower Panel hinge.

STAGE 13



This stage is describing fitting the Caps and Seals

a. Apply a bead of Silicon along the inside length of the Threshold in the recess at the front of the track. Clip the Infill track into the threshold extrusion by hooking the inside leg down first then pushing the front until the track snaps into position. The Infill track should fit tightly between the Hinge panel glass extrusion and the Inline Panel.

b. Push fit the 4 x Screw covers into the adjustment holes in both the Top brackets.

c. Apply a thin bead of silicon along the bottom edge of both the Wall Mounts and all the way up the outside of both the Wall mount extrusions between the Wall Mounts and the tiles. Apply a thin bead all the way along the Threshold between the extrusion and the Finished floor surface/tray. Continue around the joint where the Threshold joins the Wall mounts. Masking tape can be used to achieve a tidy edge to the sealant. Remove the masking tape immediately and allow the silicon to cure for 24 hours before using the shower.

d. Fit Door Horizontal Seal to underside of Door glass. Some trimming may be required. The seal should fit between the edge of the Hinge panel glass and the edge of the fin on the Door closure seal.

e. Cut 7mm off the end of the spare Silicon sealant nozzle provided in the kit of parts. Using this nozzle apply a very thin bead of silicon along the full length of the inside joint where the Side panel and Inline panel meet.

PARTS LIST

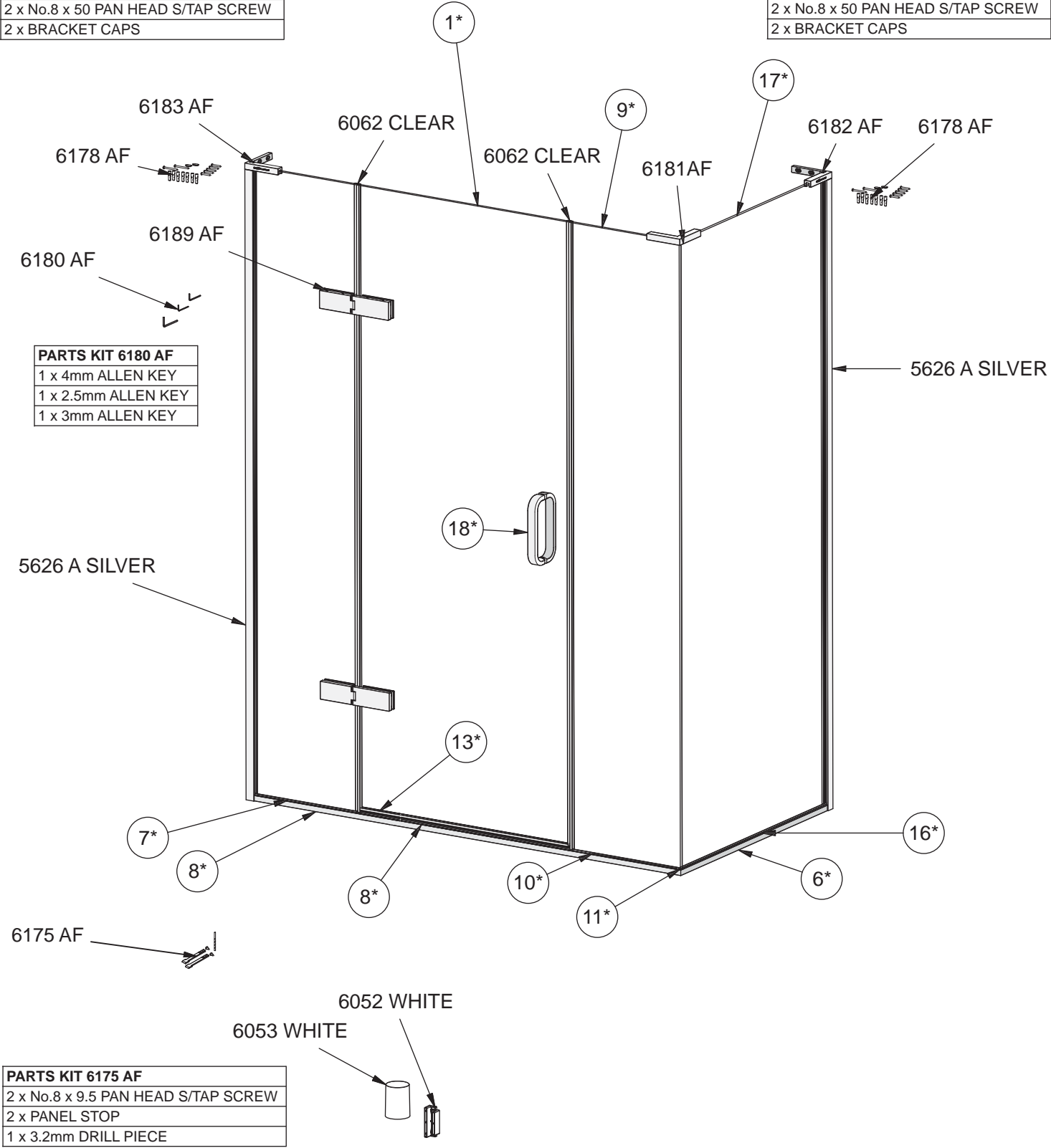
* ITEM VARIES DEPENDING ON MODEL

PARTS LIST				
ITEM	DESCRIPTION	PART No.	QTY	LENGTH
1*	DOOR (600-800)	SPECIFY MODEL SIZE	1	
2*	HINGE PANEL (200-500)	SPECIFY MODEL SIZE	1	
3	EAUZONE PLUS WALL MOUNT	5626 A SILVER	2	2000 mm
4	BOTTOM TRACK FIXING BRACKET	6043 A SILVER	1	
5	M4 x 6 SOCKET BUTTON HEAD SCREW	1518 A SILVER	6	
6*	RH CORNER LOWER HORIZONTAL (760-1900)	SPECIFY MODEL SIZE	1	
7*	FIXED PANEL HORIZONTAL (200 - 500)	SPECIFY MODEL SIZE	1	
8*	LH CORNER LOWER HORIZONTAL (760-1900)	SPECIFY MODEL SIZE	1	
9*	INLINE CLOSURE PANEL (200-600)	SPECIFY MODEL SIZE	1	
10*	FIXED PANEL HORIZONTAL (200-600 INLINE CLOSURE PANEL)	SPECIFY MODEL SIZE	1	
11*	LH INLINE CORNER CAP	6044 A SILVER	1	
11*	RH INLINE CORNER CAP	6068 A SILVER	1	
12*	HORIZONTAL CLIP-IN COVER (600 - 800)	SPECIFY MODEL SIZE	1	
13*	100 HORIZONTAL DOOR SEAL (600-700)	6055 CLEAR	1	650 mm
13*	100 HORIZONTAL DOOR SEAL (800)	6056 CLEAR	1	750 mm
14	M4 x 10 CSK SKT SCREW	1397 A SILVER	1	
15	BATH SCREEN HINGE CLOSURE SEAL (FULL HEIGHT)	6062 CLEAR	2	
16*	CORNER PANEL FIXED HORIZONTAL (760-1000)	SPECIFY MODEL SIZE	1	
17*	INLINE SIDE PANEL (760 - 1000)	SPECIFY MODEL SIZE	1	
18*	CURVED BAR HANDLE	6184 AF	1	
18*	LINEAR BAR HANDLE	6185 AF	1	
19	WALL MOUNT EXTRUSION STOP	6049 A SILVER	2	
20	WALL MOUNT EXTRUSION TO NUT	6085 A SILVER	2	
21*	LH TOP WALL BRACKET	6183 AF	1	
22	PANEL HINGE PARTS KIT	6180 AF	1	
23	WALL MOUNT & TOP BRACKET PARTS KIT	6178 AF	2	
24	INLINE PARTS KIT	6175 AF	1	
25	CORNER BRACKET	6181AF	1	
26	RH TOP WALL BRACKET	6182 AF	1	
27	PANEL HINGE UPPER AND LOWER	6189 AF	1	
28	HINGE PLATE GASKET	4559 AF	4	
29	HINGE GASKET	4560 AF	4	
30	ADJUSTMENT BLOCK GASKET	4561 AF	4	
31	ADJUSTMENT BLOCK	6040 A SILVER	4	
32	HINGE-GLASS INTERFACE(2mm)	6041 BLACK	8	
33	WALL MOUNT GASKET	1752 AF	4	1984 mm
34	DOOR ASSEMBLY BLOCK	6052 WHITE	1	
35	DOOR ASSEMBLY SUPPORT	6053 WHITE	1	

PARTS LIST

PARTS KIT 6178 AF
4 x No.8 x 32 PAN HEAD S/TAP SCREW
7 x WALL PLUG
2 x No.8 x 50 PAN HEAD S/TAP SCREW
2 x BRACKET CAPS

PARTS KIT 6178 AF
4 x No.8 x 32 PAN HEAD S/TAP SCREW
7 x WALL PLUG
2 x No.8 x 50 PAN HEAD S/TAP SCREW
2 x BRACKET CAPS



matki | S H O W E R I N G

MATKI PLC, CHURCHWARD ROAD, YATE, BRISTOL, BS37 5PL
TELEPHONE:01454 328816 (AFTER SALES) FAX:01454 328821 EMAIL: techsupport@matki.co.uk

MAINTENANCE

Matki Glass Guard Easy Clean Surface Protection (optional) and General Cleaning Guide

Cleaning Instructions

Matki Glass Guard allows water to form minute beads which easily trickle off the surface of the glass. This makes the glass easier to clean - the glass does not need to be cleaned as frequently, but it does require occasional maintenance. As less cleaning is required the use of detergents can be minimised thus helping to protect the environment. The lifespan of the Matki Glass Guard is dependant on the frequency of use of the shower and the degree of water hardness.

The combination of alkaline materials and humidity affects glass in an extremely aggressive way. Do not use bleach, alkaline, acid-based or aggressive and abrasive glass cleaners, detergents or household cleaning products on the glass or frames.

We recommend that glass is washed down with clean water and a soft clean cloth or sponge and dried off with a microfibre cloth.

The special coating is only present on the inside of the glass.

Matki Glass Guard is guaranteed for 2 years provided that the guidelines and cleaning instructions are followed.

Aluminium and Chrome parts should be cleaned with a mild non scratch household cleaner and a soft cloth or sponge.

Do not use acidic-based descaler products or products which are unsuitable for cleaning enamelled surfaces, including abrasive cleaners or cleaners containing bleach or solvents, as the products will effect the anodised framework. Under no circumstances use cleaners with a pH level exceeding 8.

Matki does not recommend the use of 'Leave-on' shower cleaners on Matki Glass Guard Products.

Water Softeners and Glass Guard - Certain types of water softeners increase the alkalinity of the water due to a carry-over of Chloride during re-generation which can cause aggressive water spots on both untreated and Glass Guarded glass. If using a water softener we recommend a two-cylinder machine with automatic re-generation instead of a timer. If a single-cylinder water softener with timer is already installed it is recommended that after each shower excess water is removed from the glass with a squeegee or with a micro-fibre cloth.

Annual recommended maintenance - Matki recommend annually lubricating the barrel of the hinge with a lubricating spray such as WD-40 to remove dust build-up and to aid the movement of the hinge.



Wash down with clean warm water and a soft clean cloth or sponge.



Do not use bleach, alkaline or acid-based, aggressive or abrasive cleaning products.

Flash Bathroom Spray or Cif Bathroom Spray can be used on Matki Products.

Various specialist cleaning and glass dressing products are available from Ritec International Ltd Tel. 020 8344 8210 or www.ritec.co.uk.

Matki Plc is not connected with Ritec International Ltd in any way and the contact details are supplied for information only. Read manufacturers label before using any cleaning materials.

IMPORTANT

Matki Glass Guard is guaranteed for 2 years. It is essential that the cleaning instructions are followed in order to maintain the hydrophobic properties of the glass coating. In the event of the failure to comply in any way with these instructions, any warranty or guarantee will be null and void.

MATKI PLC, CHURCHWARD ROAD, YATE, BRISTOL, BS37 5PL

TELEPHONE:01454 328816 (AFTER SALES) FAX:01454 328821 EMAIL: techsupport@matki.co.uk



matki | SHOWERING

13

Matki PLC, Churchward Road, Yate,
Bristol BS37 5PL

EN 14428:2008+A1